

721

FLUSHING AVENUE

BUSHWICK, BROOKLYN

Between Broadway & Thornton Street

OFFICE/MEDICAL FOR LEASE

APPROXIMATE SIZE

Ground Floor: 1,450 SF
2nd Floor: 3,500 SF
Lower Level: 2,500 SF
Total: 7,450 SF

POSSESSION

Immediate

ASKING RENT

Ground Floor: \$6,000/Month
2nd Floor: \$10,000/Month
Lower Level: \$5,000/Month
Entire Space: \$19,500/Month

TERM

Negotiable

COMMENTS

- Elevator access
- Multiple means of egress
- Built-out medical facility on the ground floor and lower level
- High foot/car traffic
- Across from the Woodhull Hospital

NEIGHBORS

Woodhull Hospital • Mirakuya • Rivera's Bagel Café • Frank's Coffee Shop • Burger King • Sonic • Popeyes • Wallgreens • Footlocker • Taco Bell

TRANSPORTATION



JAMES FAMULARO

President

JOSEPH HARARY

Director
212.468.5978
jharary@meridiancapital.com

SHAYA KATZ

Associate
212.468.5991
shaya.katz@meridiancapital.com



MERIDIAN
RETAIL LEASING

All information supplied is from sources deemed reliable and is furnished subject to errors, omissions, modifications, removal of the listing from sale or lease, and to any listing conditions, including the rates and manner of payment of commissions for particular offerings imposed by Meridian Capital Group. This information may include estimates and projections prepared by Meridian Capital Group with respect to future events, and these future events may or may not actually occur. Such estimates and projections reflect various assumptions concerning anticipated results. While Meridian Capital Group believes these assumptions are reasonable, there can be no assurance that any of these estimates and projections will be correct. Therefore, actual results may vary materially from these estimates and projections. Any square footage dimensions set forth are approximate.



INTERIOR | GROUND FLOOR

JAMES FAMULARO
President

JOSEPH HARARY
Director
212.468.5978
jharary@meridiancapital.com

SHAYA KATZ
Associate
212.468.5991
shaya.katz@meridiancapital.com



MERIDIAN
RETAIL LEASING



INTERIOR | SECOND FLOOR

JAMES FAMULARO
President

JOSEPH HARARY
Director
212.468.5978
jharary@meridiancapital.com

SHAYA KATZ
Associate
212.468.5991
shaya.katz@meridiancapital.com

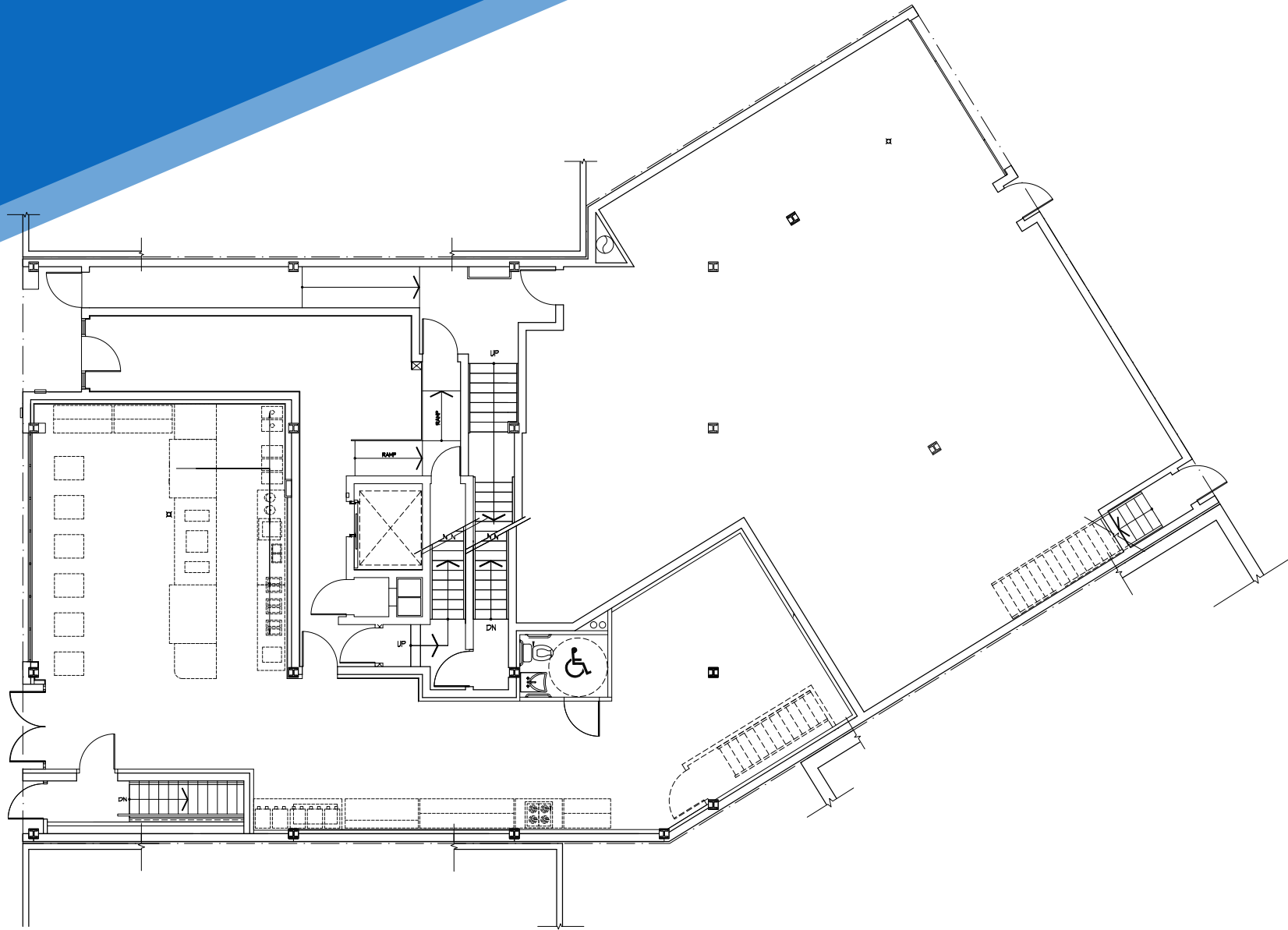


MERIDIAN
RETAIL LEASING

721 FLUSHING AVENUE
BUSHWICK, BROOKLYN | Between Broadway and Thornton Street

OFFICE/MEDICAL FOR LEASE

FLOOR PLAN | GROUND FLOOR



JAMES FAMULARO
President

JOSEPH HARARY
Director
212.468.5978
jharary@meridiancapital.com

SHAYA KATZ
Associate
212.468.5991
shaya.katz@meridiancapital.com



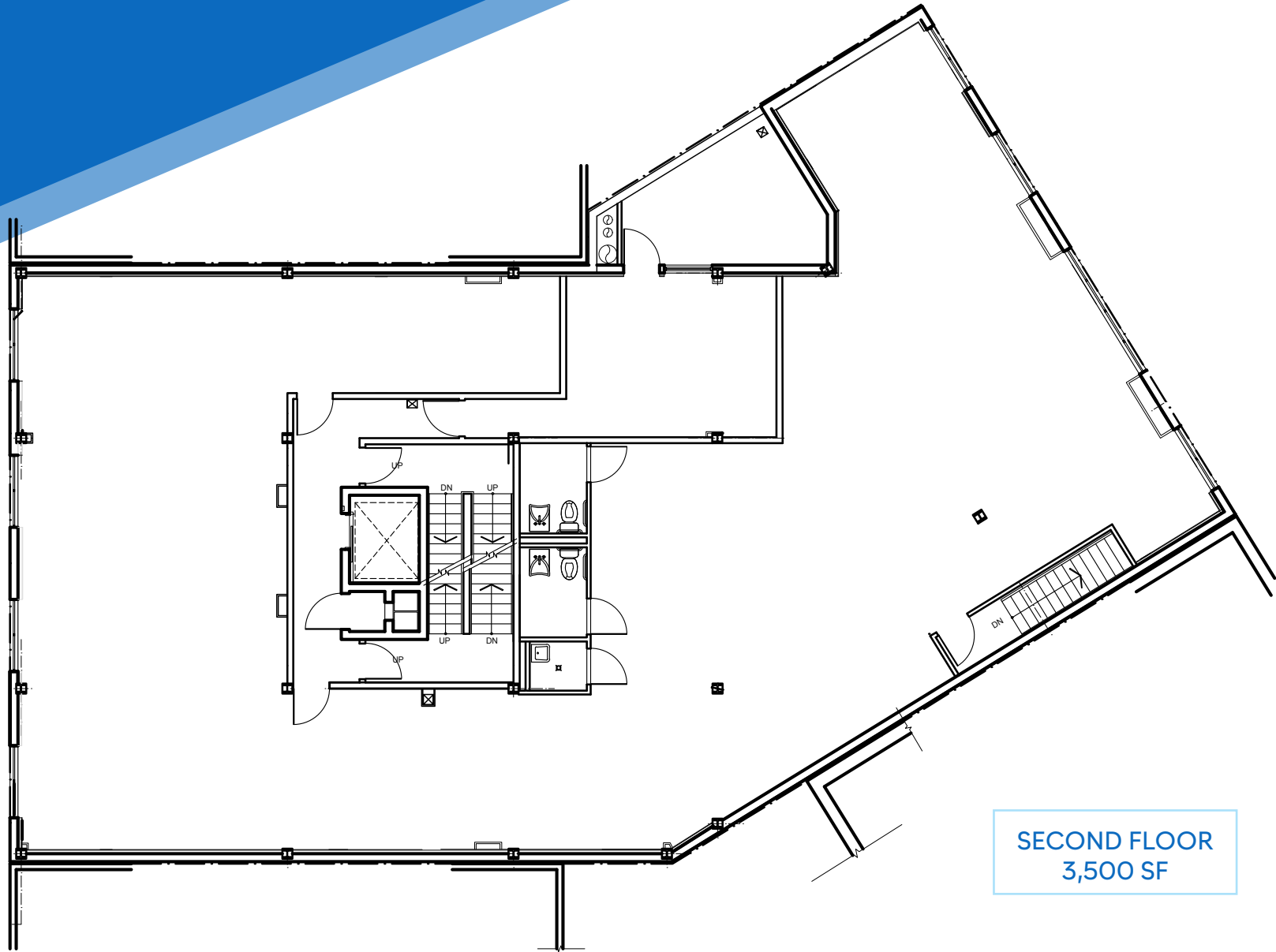
MERIDIAN
RETAIL LEASING

All information supplied is from sources deemed reliable and is furnished subject to errors, omissions, modifications, removal of the listing from sale or lease, and to any listing conditions, including the rates and manner of payment of commissions for particular offerings imposed by Meridian Capital Group. This information may include estimates and projections prepared by Meridian Capital Group with respect to future events, and these future events may or may not actually occur. Such estimates and projections reflect various assumptions concerning anticipated results. While Meridian Capital Group believes these assumptions are reasonable, there can be no assurance that any of these estimates and projections will be correct. Therefore, actual results may vary materially from these estimates and projections. Any square footage dimensions set forth are approximate.

721 FLUSHING AVENUE
BUSHWICK, BROOKLYN | Between Broadway and Thornton Street

OFFICE/MEDICAL FOR LEASE

FLOOR PLAN | SECOND FLOOR



JAMES FAMULARO
President

JOSEPH HARARY
Director
212.468.5978
jharary@meridiancapital.com

SHAYA KATZ
Associate
212.468.5991
shaya.katz@meridiancapital.com



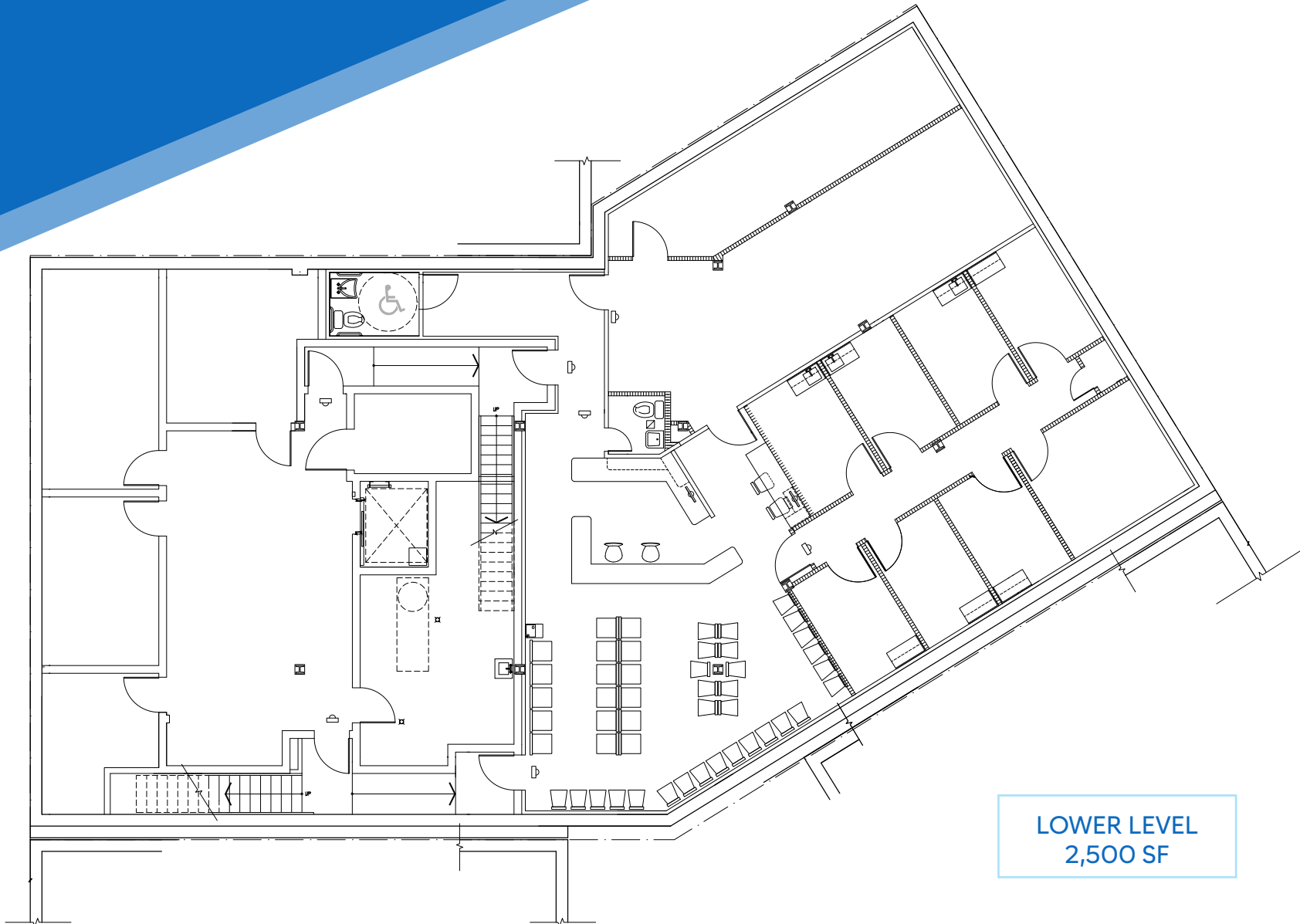
MERIDIAN
RETAIL LEASING

All information supplied is from sources deemed reliable and is furnished subject to errors, omissions, modifications, removal of the listing from sale or lease, and to any listing conditions, including the rates and manner of payment of commissions for particular offerings imposed by Meridian Capital Group. This information may include estimates and projections prepared by Meridian Capital Group with respect to future events, and these future events may or may not actually occur. Such estimates and projections reflect various assumptions concerning anticipated results. While Meridian Capital Group believes these assumptions are reasonable, there can be no assurance that any of these estimates and projections will be correct. Therefore, actual results may vary materially from these estimates and projections. Any square footage dimensions set forth are approximate.

721 FLUSHING AVENUE
BUSHWICK, BROOKLYN | Between Broadway and Thornton Street

OFFICE/MEDICAL FOR LEASE

FLOOR PLAN | LOWER LEVEL



LOWER LEVEL
2,500 SF

JAMES FAMULARO
President

JOSEPH HARARY
Director
212.468.5978
jharary@meridiancapital.com

SHAYA KATZ
Associate
212.468.5991
shaya.katz@meridiancapital.com



MERIDIAN
RETAIL LEASING

All information supplied is from sources deemed reliable and is furnished subject to errors, omissions, modifications, removal of the listing from sale or lease, and to any listing conditions, including the rates and manner of payment of commissions for particular offerings imposed by Meridian Capital Group. This information may include estimates and projections prepared by Meridian Capital Group with respect to future events, and these future events may or may not actually occur. Such estimates and projections reflect various assumptions concerning anticipated results. While Meridian Capital Group believes these assumptions are reasonable, there can be no assurance that any of these estimates and projections will be correct. Therefore, actual results may vary materially from these estimates and projections. Any square footage dimensions set forth are approximate.

721 FLUSHING AVENUE

BUSHWICK, BROOKLYN | Between Broadway and Thornton Street

OFFICE/MEDICAL FOR LEASE



NEIGHBORS

JAMES FAMULARO
President

JOSEPH HARARY
Director
212.468.5978
jharary@meridiancapital.com

SHAYA KATZ
Associate
212.468.5991
shaya.katz@meridiancapital.com



MERIDIAN
RETAIL LEASING

All information supplied is from sources deemed reliable and is furnished subject to errors, omissions, modifications, removal of the listing from sale or lease, and to any listing conditions, including the rates and manner of payment of commissions for particular offerings imposed by Meridian Capital Group. This information may include estimates and projections prepared by Meridian Capital Group with respect to future events, and these future events may or may not actually occur. Such estimates and projections reflect various assumptions concerning anticipated results. While Meridian Capital Group believes these assumptions are reasonable, there can be no assurance that any of these estimates and projections will be correct. Therefore, actual results may vary materially from these estimates and projections. Any square footage dimensions set forth are approximate.