

69

EAST 125TH STREET EAST HARLEM, NYC

Between Park & Madison Avenues

RETAIL FOR LEASE

APPROXIMATE SIZE

3,531 SF

ASKING RENT

~~\$20,000/Month~~ Reduced
\$18,000/Month

POSSESSION

Immediate

TERM

5-15 Years

FRONTAGE

26 FT

COMMENTS

- Beautiful well-kept space directly on 125th Street
- At the base of a 75-unit apartment building
- All quality non-food uses considered
- Excellent retail, fitness, medical, or education opportunity in Central Harlem

NEIGHBORS

TJ Maxx • Nike • Shake Shack • Harlem Children's Zone • Baskin Robbins • Dunkin' • Harlem Nail Bar • Edible Arrangements

TRANSPORTATION



PROPERTY INFORMATION

JAMES FAMULARO
President

DANE HARLOWE
Director
212.468.5966
dharlowe@meridiancapital.com

NOAM AZIZ
Director
212.468.5984
naziz@meridiancapital.com

NATHAN SHABOT
Associate
212.468.5933
shabot@meridiancapital.com



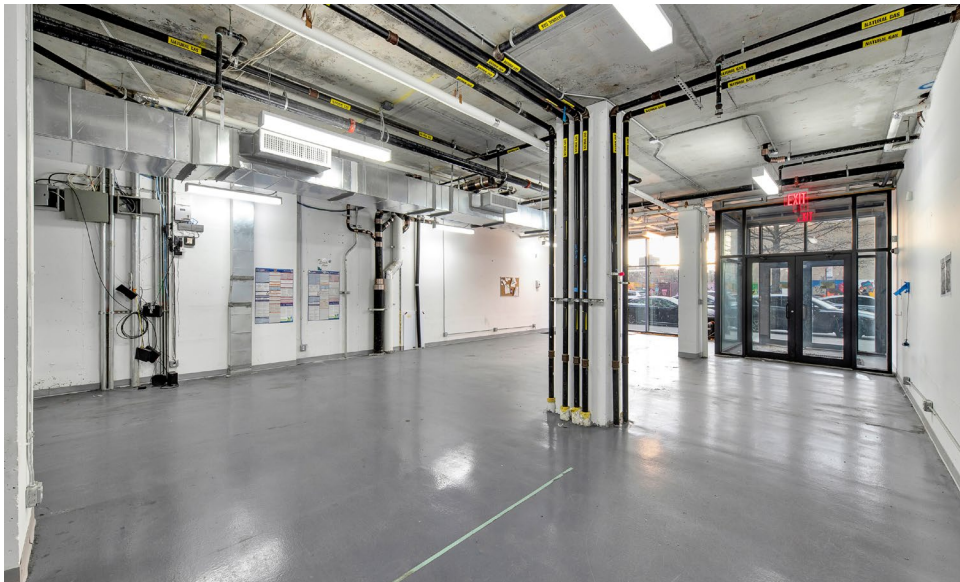
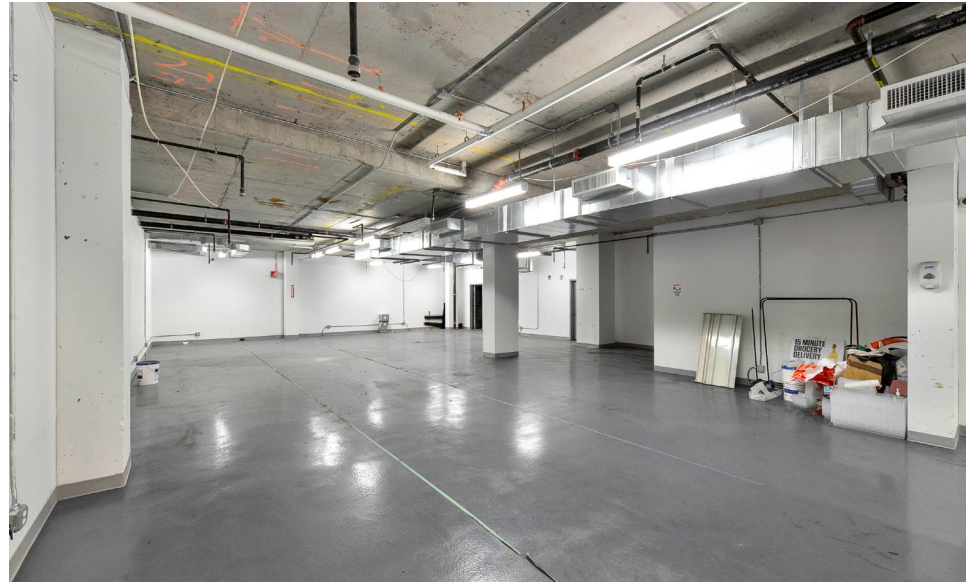
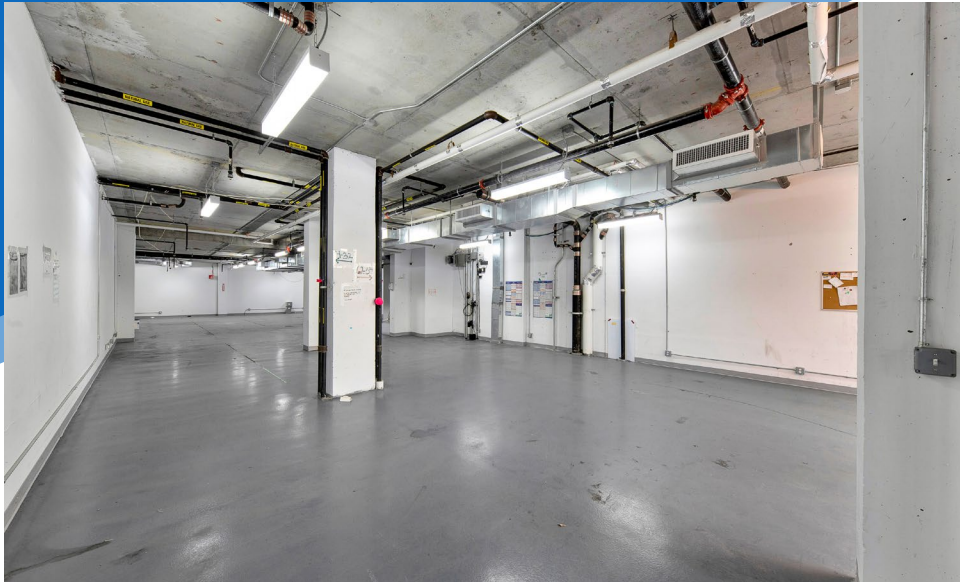
MERIDIAN
RETAIL LEASING

All information supplied is from sources deemed reliable and is furnished subject to errors, omissions, modifications, removal of the listing from sale or lease, and to any listing conditions, including the rates and manner of payment of commissions for particular offerings imposed by Meridian Capital Group. This information may include estimates and projections prepared by Meridian Capital Group with respect to future events, and these future events may or may not actually occur. Such estimates and projections reflect various assumptions concerning anticipated results. While Meridian Capital Group believes these assumptions are reasonable, there can be no assurance that any of these estimates and projections will be correct. Therefore, actual results may vary materially from these estimates and projections. Any square footage dimensions set forth are approximate.

69 EAST 125TH STREET

EAST HARLEM, NYC | Between Park and Madison Avenues

RETAIL FOR LEASE



INTERIOR

JAMES FAMULARO
President

DANE HARLOWE
Director
212.468.5966
dharlowe@meridiancapital.com

NOAM AZIZ
Director
212.468.5984
naziz@meridiancapital.com

NATHAN SHABOT
Associate
212.468.5933
shabot@meridiancapital.com



MERIDIAN
RETAIL LEASING

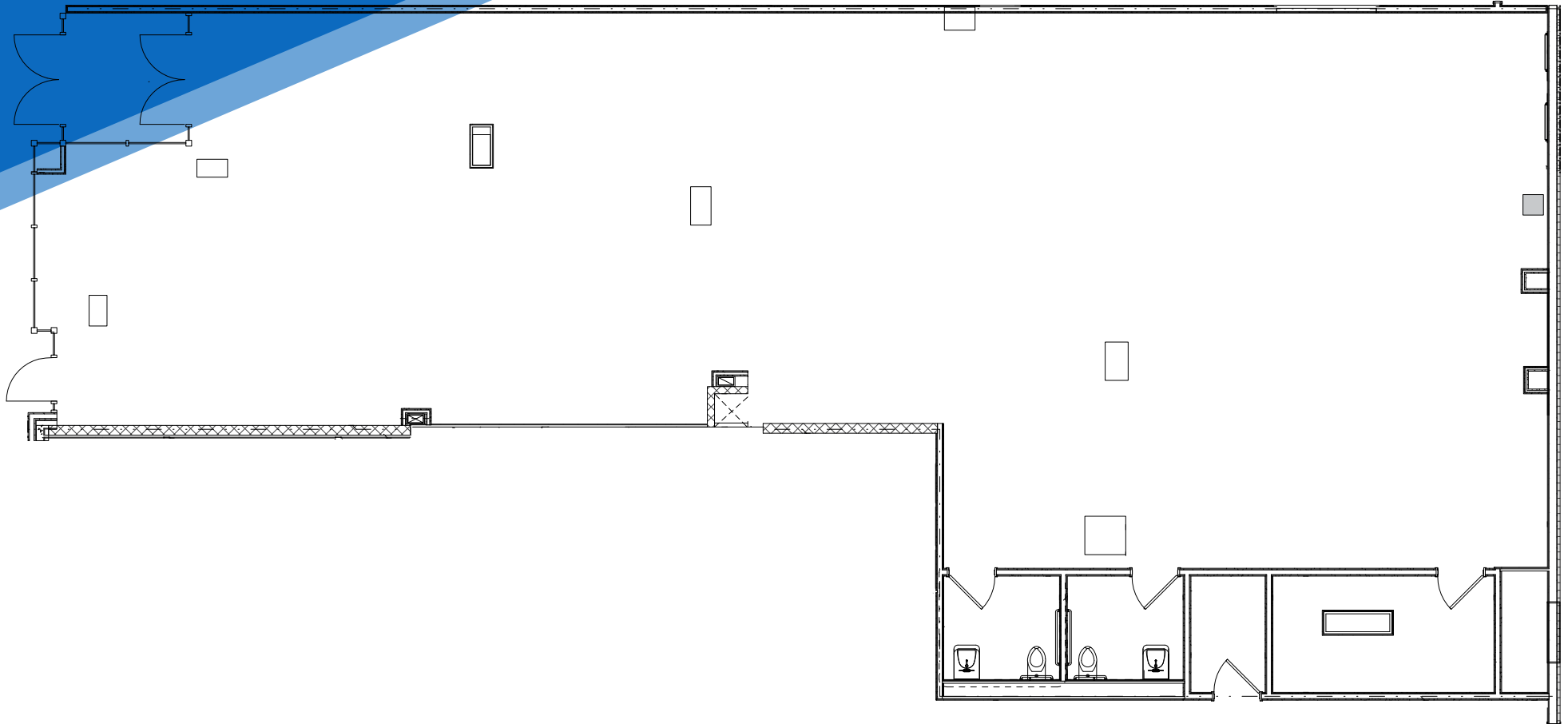
All information supplied is from sources deemed reliable and is furnished subject to errors, omissions, modifications, removal of the listing from sale or lease, and to any listing conditions, including the rates and manner of payment of commissions for particular offerings imposed by Meridian Capital Group. This information may include estimates and projections prepared by Meridian Capital Group with respect to future events, and these future events may or may not actually occur. Such estimates and projections reflect various assumptions concerning anticipated results. While Meridian Capital Group believes these assumptions are reasonable, there can be no assurance that any of these estimates and projections will be correct. Therefore, actual results may vary materially from these estimates and projections. Any square footage dimensions set forth are approximate.

69 EAST 125TH STREET

EAST HARLEM, NYC | Between Park and Madison Avenues

RETAIL FOR LEASE

FLOOR PLAN



JAMES FAMULARO
President

DANE HARLOWE
Director
212.468.5966
dharlowe@meridiancapital.com

NOAM AZIZ
Director
212.468.5984
naziz@meridiancapital.com

NATHAN SHABOT
Associate
212.468.5933
shabot@meridiancapital.com



MERIDIAN
RETAIL LEASING

All information supplied is from sources deemed reliable and is furnished subject to errors, omissions, modifications, removal of the listing from sale or lease, and to any listing conditions, including the rates and manner of payment of commissions for particular offerings imposed by Meridian Capital Group. This information may include estimates and projections prepared by Meridian Capital Group with respect to future events, and these future events may or may not actually occur. Such estimates and projections reflect various assumptions concerning anticipated results. While Meridian Capital Group believes these assumptions are reasonable, there can be no assurance that any of these estimates and projections will be correct. Therefore, actual results may vary materially from these estimates and projections. Any square footage dimensions set forth are approximate.

69 EAST 125TH STREET

EAST HARLEM, NYC | Between Park and Madison Avenues

RETAIL FOR LEASE

The map displays a grid of streets including W 124th, 125th, 126th, and 127th Streets, and Fifth Avenue and Madison Avenue. A blue callout bubble points to the location of 69 East 125th Street. Various businesses and landmarks are labeled, including:

- THE Episcopal CHURCH** (W 127th St)
- S & M VARIETY STORE** (W 126th St)
- OMO SADE SKINCARE** (W 126th St)
- Amy Kina African Hair Braiding** (W 126th St)
- West Harlem Deli Corp** (W 125th St)
- Fanta Hair Braiding** (W 125th St)
- MOBAY UPTOWN RESTAURANT AND BARBECUE** (W 125th St)
- SHAKE SHACK** (W 125th St)
- TJ-maxx** (W 125th St)
- Nike** (W 125th St)
- cycle EYE CYCLE** (W 125th St)
- Unk's Place** (W 125th St)
- Charlie's Place Of Sushi** (W 125th St)
- NATIONAL BLACK THEATRE** (W 125th St)
- HOLY GHOST PENTECOSTAL FAITH CHURCH FOR ALL NATIONS** (W 125th St)
- Harlem Children's Zone** (W 125th St)
- edible** (W 125th St)
- Fancy Nails** (W 125th St)
- ups** (W 125th St)
- HARLEM 24HRS HAIR BRAIDING SHOP** (W 125th St)
- BKrowned Hair and Beauty** (W 125th St)
- Franci Beauty Salon** (W 125th St)
- 2729 Family Nails** (W 125th St)
- R A M A** (W 125th St)
- Sb pharmacy** (W 125th St)
- Uptown Veg** (E 125th St)
- Bf Soul Food** (E 125th St)
- Maxi Express Braids - African Hair Braiding** (E 125th St)
- Mahamadi Aissatou Hair Braiding** (E 125th St)
- Baba Fashion Harlem** (E 125th St)
- First Church of Christ Holiness USA** (E 125th St)
- East 124 Deli Grocery** (E 124th St)
- 124 Coffee Shop** (E 124th St)

NEIGHBORS

JAMES FAMULARO
President

DANE HARLOWE
Director
212.468.5966
dharlowe@meridiancapital.com

NOAM AZIZ
Director
212.468.5984
naziz@meridiancapital.com

NATHAN SHABOT
Associate
212.468.5933
shabot@meridiancapital.com



MERIDIAN
RETAIL LEASING

All information supplied is from sources deemed reliable and is furnished subject to errors, omissions, modifications, removal of the listing from sale or lease, and to any listing conditions, including the rates and manner of payment of commissions for particular offerings imposed by Meridian Capital Group. This information may include estimates and projections prepared by Meridian Capital Group with respect to future events, and these future events may or may not actually occur. Such estimates and projections reflect various assumptions concerning anticipated results. While Meridian Capital Group believes these assumptions are reasonable, there can be no assurance that any of these estimates and projections will be correct. Therefore, actual results may vary materially from these estimates and projections. Any square footage dimensions set forth are approximate.