

306

EAST 6TH STREET
EAST VILLAGE, NYC

Between First & Second Avenues

RETAIL FOR LEASE

APPROXIMATE SIZE

1,000 SF + Basement

ASKING RENT

\$5,000/Month

POSSESSION

Immediate

TERM

10-15 Years

FRONTAGE

15 FT

COMMENTS

- Open layout with minimal column intrusions
- Newly renovated with bathroom in place
- Roll-down gate
- All uses considered

NEIGHBORS

Izakaya NYC • Spicy Moon • Frank • 787
Coffee • Van Leeuwen • San Marzano • Sinsa
• Tamam • Emmy Squared Pizza • Coffee
Project • Mister Paradise • Fish Bar

TRANSPORTATION

6 R W B D F M



PROPERTY INFORMATION

JAMES FAMULARO

President
646.658.7373
jfamularo@meridiancapital.com

COLE KLEPPINGER

Associate
212.468.5993
ckleppinger@meridiancapital.com



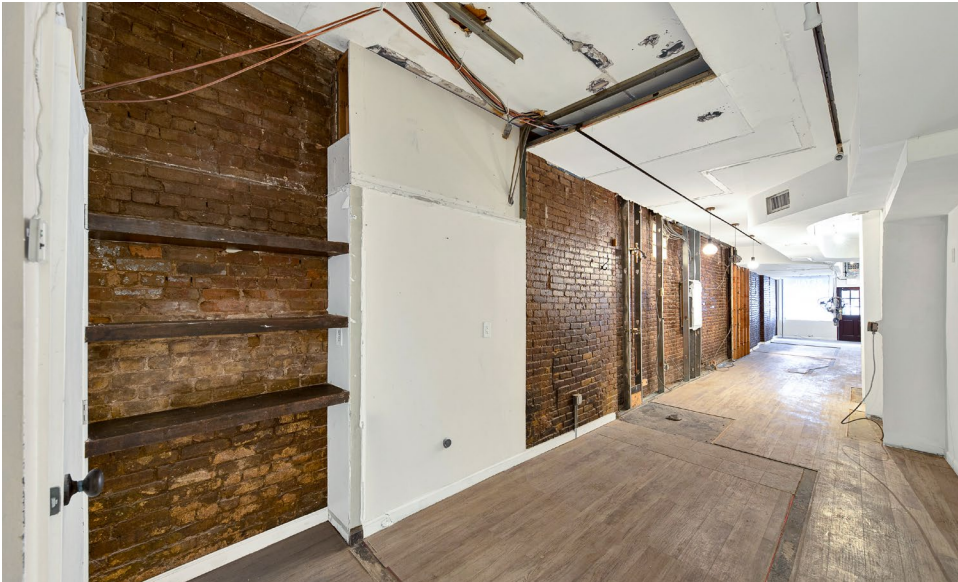
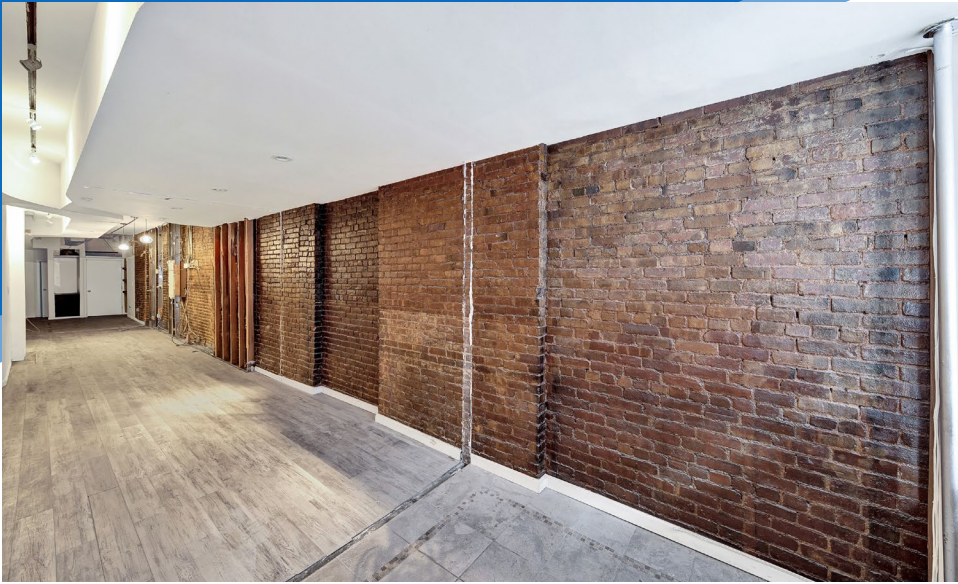
MERIDIAN
RETAIL LEASING

All information supplied is from sources deemed reliable and is furnished subject to errors, omissions, modifications, removal of the listing from sale or lease, and to any listing conditions, including the rates and manner of payment of commissions for particular offerings imposed by Meridian Capital Group. This information may include estimates and projections prepared by Meridian Capital Group with respect to future events, and these future events may or may not actually occur. Such estimates and projections reflect various assumptions concerning anticipated results. While Meridian Capital Group believes these assumptions are reasonable, there can be no assurance that any of these estimates and projections will be correct. Therefore, actual results may vary materially from these estimates and projections. Any square footage dimensions set forth are approximate.

306 EAST 6TH STREET

EAST VILLAGE, NYC | Between First and Second Avenues

RETAIL FOR LEASE



INTERIOR

JAMES FAMULARO

President
646.658.7373
jfamularo@meridiancapital.com

COLE KLEPPINGER

Associate
212.468.5993
ckleppinger@meridiancapital.com



MERIDIAN
RETAIL LEASING

All information supplied is from sources deemed reliable and is furnished subject to errors, omissions, modifications, removal of the listing from sale or lease, and to any listing conditions, including the rates and manner of payment of commissions for particular offerings imposed by Meridian Capital Group. This information may include estimates and projections prepared by Meridian Capital Group with respect to future events, and these future events may or may not actually occur. Such estimates and projections reflect various assumptions concerning anticipated results. While Meridian Capital Group believes these assumptions are reasonable, there can be no assurance that any of these estimates and projections will be correct. Therefore, actual results may vary materially from these estimates and projections. Any square footage dimensions set forth are approximate.

306 EAST 6TH STREET

EAST VILLAGE, NYC | Between First and Second Avenues

RETAIL FOR LEASE

306 EAST 6TH STREET

NEIGHBORS

E 7TH STREET

E 6TH STREET

E 5TH STREET

SECOND AVENUE

FIRST AVENUE

Businesses shown on the map:

- Top Left:** PROLETARIAT, BURP CASTLE NYC, BANK OF AMERICA, Third Kingdom, Streecha, Standings, Good Stuff Gold Buyers
- Top Right:** OKIBORU, Uni K Wax, Mamma, Bloomie Nails, REFINERY, Whiskey Cellar NYC, abraço, nudibranch, MEMPHIS SEUL, ARIARI, Tile Bar, Flower shop, INTERNATIONAL BAR, BASKIN ROBBINS, DUNKIN', McDonald's
- Middle Left:** COOPER UNION, SAINT GEORGE ACADEMY, Le Petit Parisien, THAI4 thought, San Margano, LE FOURNIL
- Middle Right:** VanLeeuwen, AGAVI, SETSUGEKKA, Rogue House, Redge Annex, 7th Street Village Farm, YUBU, SenYa, mister paradise, HEARTY & HEALTHY, citi bike, here Espresso
- Bottom Left:** THE UKRAINIAN MUSEUM, Lily Foot Spa Massage, Fish Bar, COFFEE PROJECT NEW YORK, COOPER'S, Sinsa, WILD MIRRORS, Sunflower GROCERY, FRANK, BAR SNACK, RYNN, The Kitchen Sink
- Bottom Right:** Mela on the Six, MAYAMEZCAL, CURRY flavor NYC, Kohinoor Indian Cuisine, Spicy Moon, Arshad Azad, Panna II, Junoon, Sigiri, Chakra, Goloka Juice Bar & Health Shop, J J Cleaners & Laundromat, RITE AID, CITY GLOW, The Sabiang Thai, SPICE

JAMES FAMULARO

President
646.658.7373
jfamularo@meridiancapital.com

COLE KLEPPINGER

Associate
212.468.5993
ckleppinger@meridiancapital.com



MERIDIAN
RETAIL LEASING

All information supplied is from sources deemed reliable and is furnished subject to errors, omissions, modifications, removal of the listing from sale or lease, and to any listing conditions, including the rates and manner of payment of commissions for particular offerings imposed by Meridian Capital Group. This information may include estimates and projections prepared by Meridian Capital Group with respect to future events, and these future events may or may not actually occur. Such estimates and projections reflect various assumptions concerning anticipated results. While Meridian Capital Group believes these assumptions are reasonable, there can be no assurance that any of these estimates and projections will be correct. Therefore, actual results may vary materially from these estimates and projections. Any square footage dimensions set forth are approximate.