



243

WEST 124TH STREET

HARLEM, NYC



MERIDIAN
RETAIL LEASING

243

WEST 124TH STREET HARLEM, NYC

Between Frederick Douglass & Adam
Clayton Powell Jr. Boulevards

RETAIL FOR LEASE

SPACE A



APPROXIMATE SIZE

Space A Ground Floor: 9,150 SF
Space B Lower Level: 15,000 SF

ASKING RENT

Space A: \$44 PSF
Space B: \$29 PSF

POSSESSION

Immediate

TERM

5-15 Years

FRONTAGE

Space A: 100 FT
Space B: 11 FT

COMMENTS

Space A

- New ADA ramp/staircase leading to entrance
- New windows, mount for signage, roll-down gate, and entrance doors
- Can be contiguous to lower level

Space B

- Elevator/staircase entrance
- Freight elevator and conveyor belt access
- Can be contiguous to ground floor
- In the heart of the bustling 125th Street retail corridor filled with national tenants and influx of new development

NEIGHBORS

Apollo Theater • Gap • Chick-Fil-A • Foot Locker
• GNC • Game Stop • Banano Republic • AMC
Theatres • NYSC • Starbucks • Mattress Firm

TRANSPORTATION

1

SPACE B



JAMES FAMULARO
President

NOAM AZIZ
Director
212.468.5984
naziz@meridiancapital.com

NATHAN SHABOT
Associate
212.468.5933
nshabot@meridiancapital.com

ARIEL ILIAN
Associate
212.468.5986
ailian@meridiancapital.com



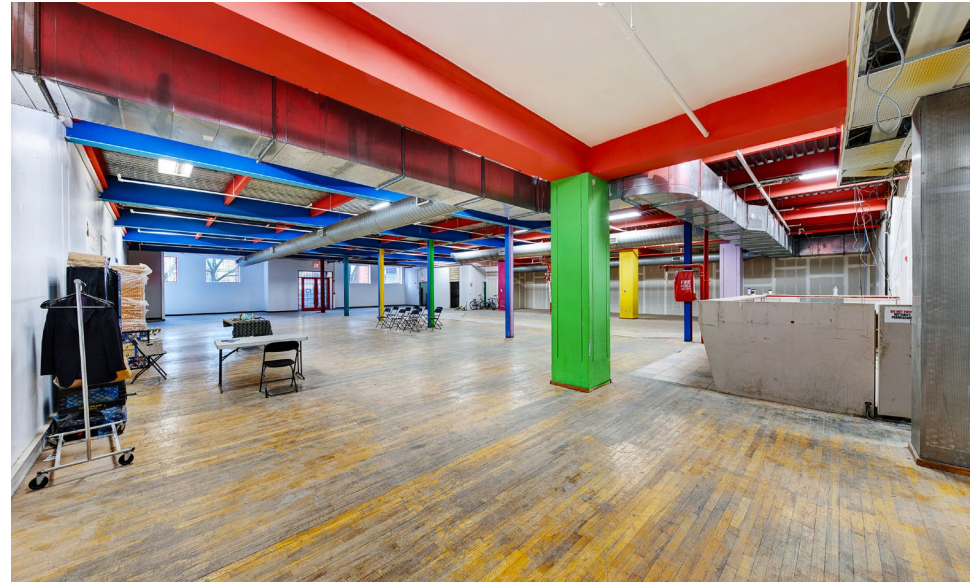
MERIDIAN
RETAIL LEASING

All information supplied is from sources deemed reliable and is furnished subject to errors, omissions, modifications, removal of the listing from sale or lease, and to any listing conditions, including the rates and manner of payment of commissions for particular offerings imposed by Meridian Capital Group. This information may include estimates and projections prepared by Meridian Capital Group with respect to future events, and these future events may or may not actually occur. Such estimates and projections reflect various assumptions concerning anticipated results. While Meridian Capital Group believes these assumptions are reasonable, there can be no assurance that any of these estimates and projections will be correct. Therefore, actual results may vary materially from these estimates and projections. Any square footage dimensions set forth are approximate.

243 WEST 124TH STREET

HARLEM, NYC | Between Frederick Douglass & Adam Clayton Powell Jr. Boulevards

RETAIL FOR LEASE



INTERIOR | SPACE A

JAMES FAMULARO
President

NOAM AZIZ
Director
212.468.5984
naziz@meridiancapital.com

NATHAN SHABOT
Associate
212.468.5933
nshabot@meridiancapital.com

ARIEL ILIAN
Associate
212.468.5986
ailian@meridiancapital.com



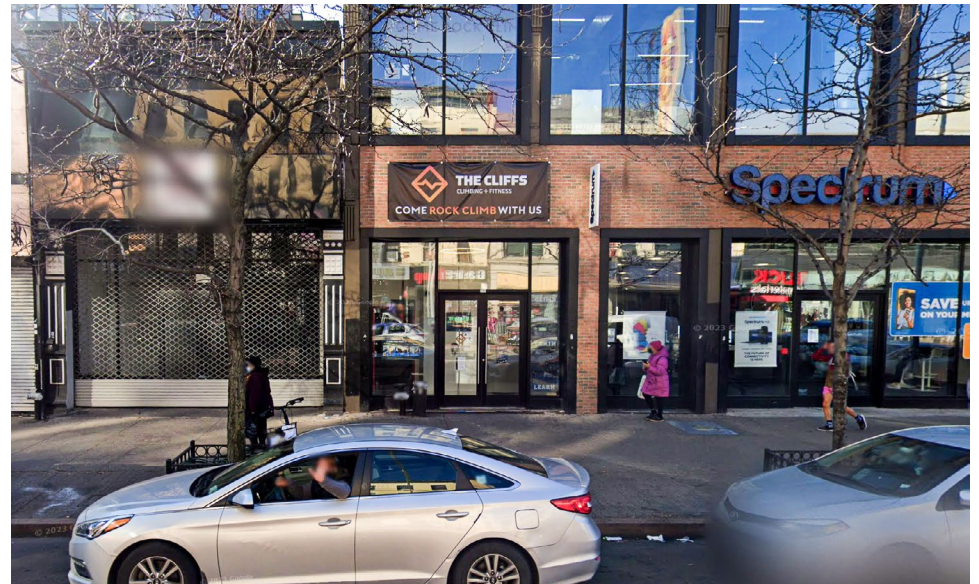
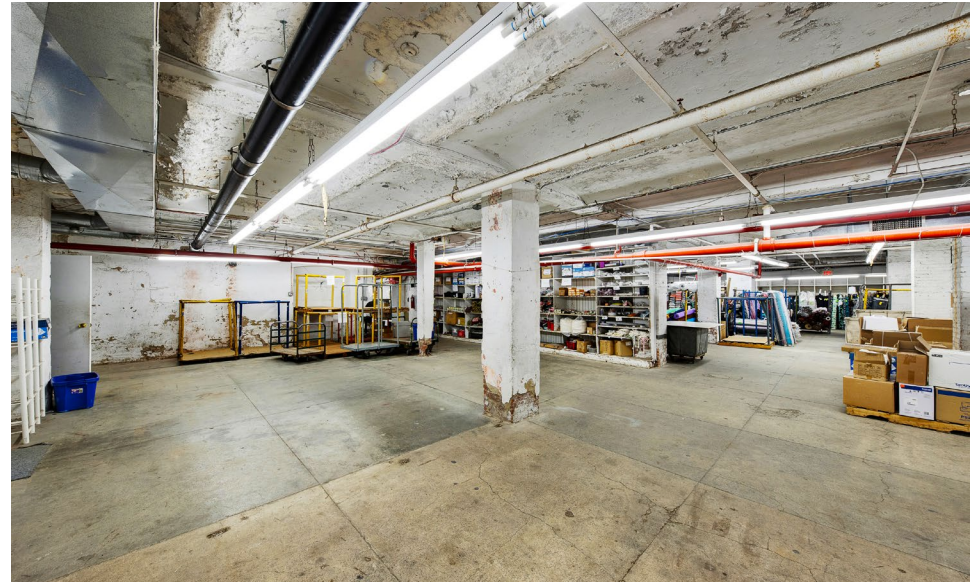
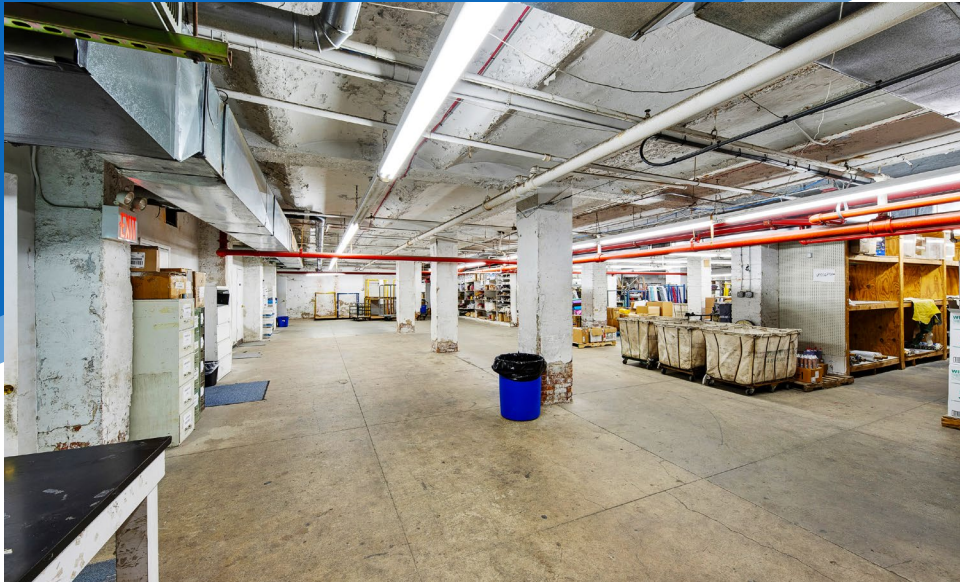
MERIDIAN
RETAIL LEASING

All information supplied is from sources deemed reliable and is furnished subject to errors, omissions, modifications, removal of the listing from sale or lease, and to any listing conditions, including the rates and manner of payment of commissions for particular offerings imposed by Meridian Capital Group. This information may include estimates and projections prepared by Meridian Capital Group with respect to future events, and these future events may or may not actually occur. Such estimates and projections reflect various assumptions concerning anticipated results. While Meridian Capital Group believes these assumptions are reasonable, there can be no assurance that any of these estimates and projections will be correct. Therefore, actual results may vary materially from these estimates and projections. Any square footage dimensions set forth are approximate.

243 WEST 124TH STREET

HARLEM, NYC | Between Frederick Douglass & Adam Clayton Powell Jr. Boulevards

RETAIL FOR LEASE



INTERIOR | SPACE B

JAMES FAMULARO
President

NOAM AZIZ
Director
212.468.5984
naziz@meridiancapital.com

NATHAN SHABOT
Associate
212.468.5933
nshabot@meridiancapital.com

ARIEL ILIAN
Associate
212.468.5986
ailian@meridiancapital.com



MERIDIAN
RETAIL LEASING

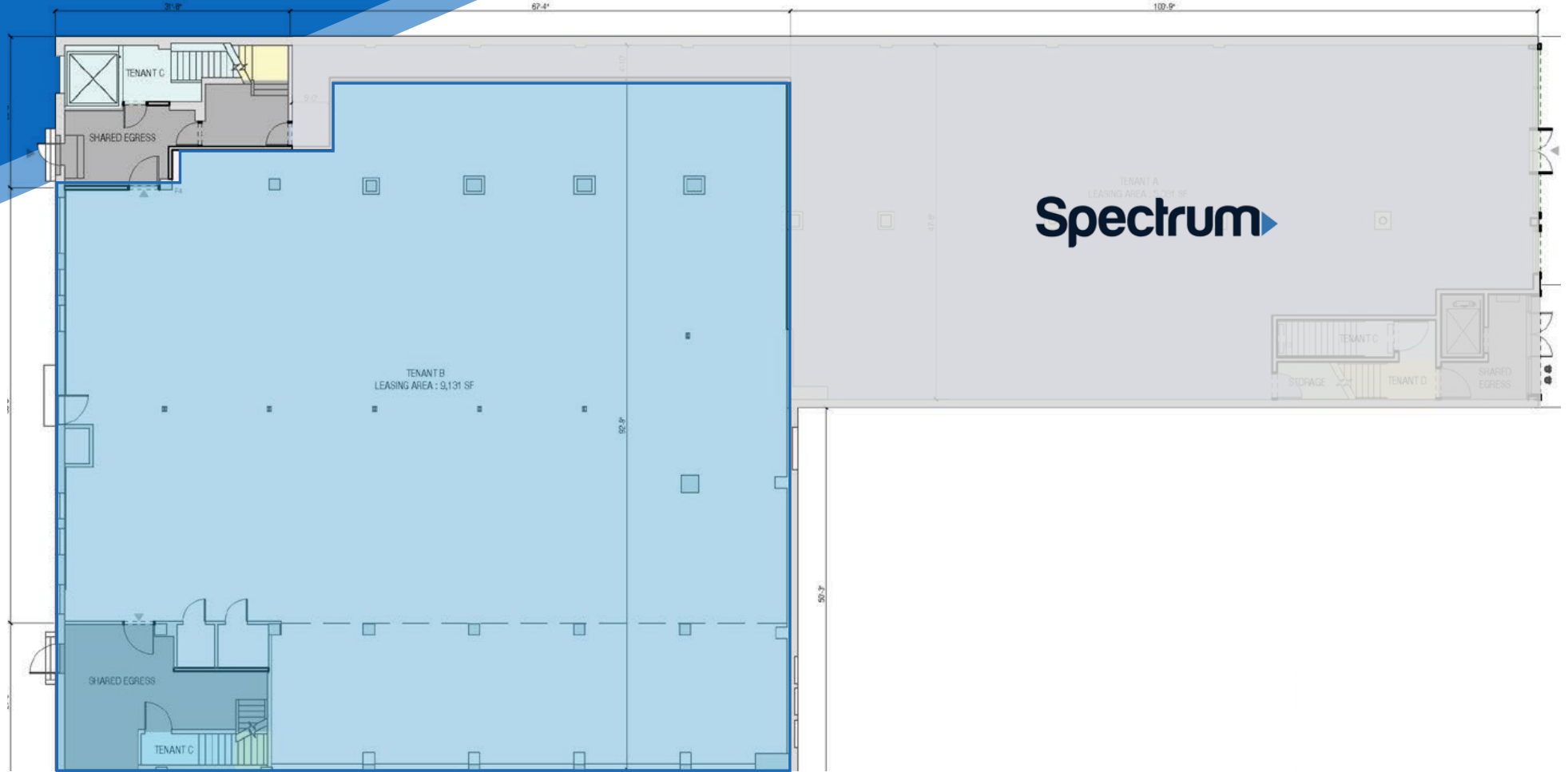
All information supplied is from sources deemed reliable and is furnished subject to errors, omissions, modifications, removal of the listing from sale or lease, and to any listing conditions, including the rates and manner of payment of commissions for particular offerings imposed by Meridian Capital Group. This information may include estimates and projections prepared by Meridian Capital Group with respect to future events, and these future events may or may not actually occur. Such estimates and projections reflect various assumptions concerning anticipated results. While Meridian Capital Group believes these assumptions are reasonable, there can be no assurance that any of these estimates and projections will be correct. Therefore, actual results may vary materially from these estimates and projections. Any square footage dimensions set forth are approximate.

243 WEST 124TH STREET

HARLEM, NYC | Between Frederick Douglass & Adam Clayton Powell Jr. Boulevards

RETAIL FOR LEASE

FLOOR PLAN | SPACE A



JAMES FAMULARO
President

NOAM AZIZ
Director
212.468.5984
naziz@meridiancapital.com

NATHAN SHABOT
Associate
212.468.5933
nshabot@meridiancapital.com

ARIEL ILIAN
Associate
212.468.5986
ailian@meridiancapital.com



MERIDIAN
RETAIL LEASING

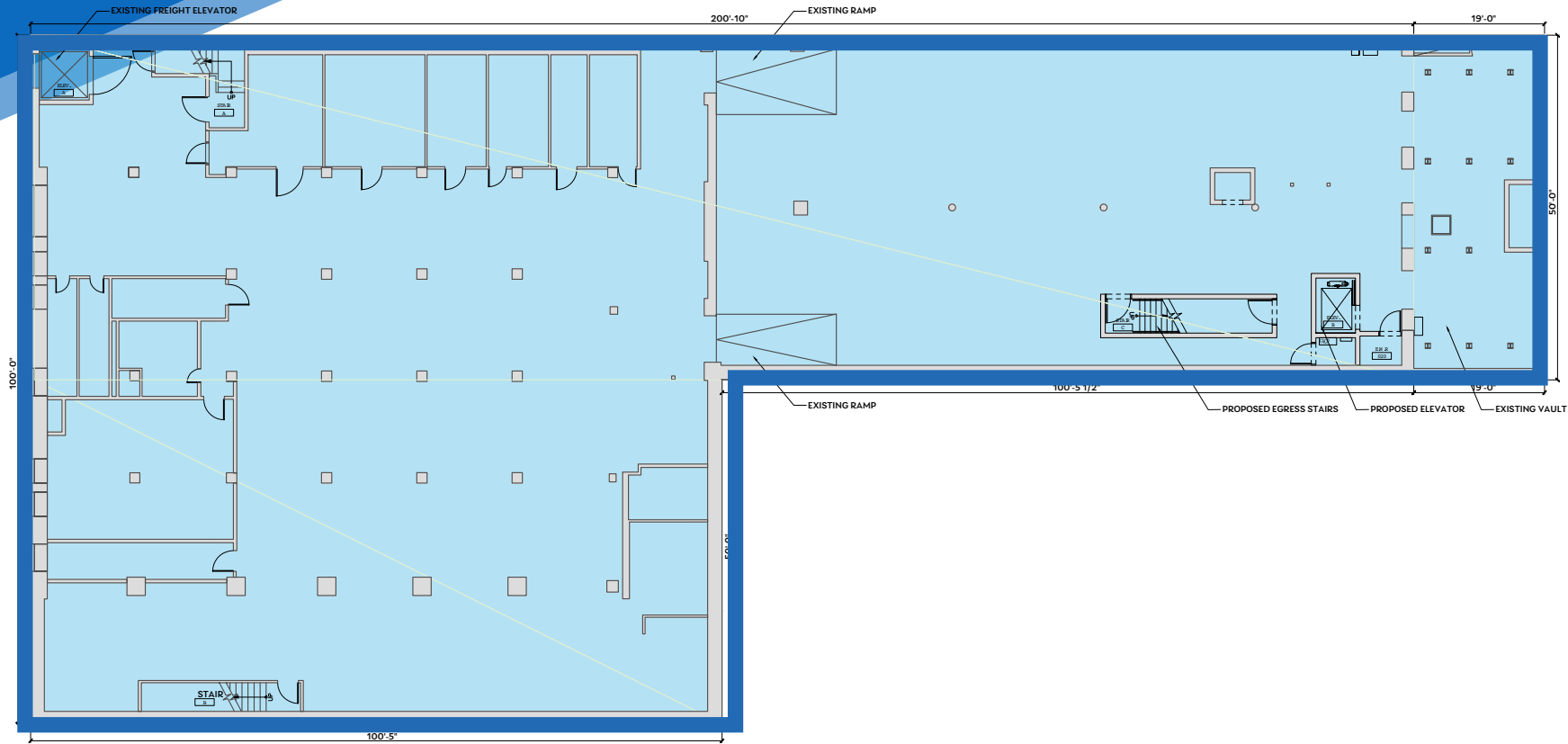
All information supplied is from sources deemed reliable and is furnished subject to errors, omissions, modifications, removal of the listing from sale or lease, and to any listing conditions, including the rates and manner of payment of commissions for particular offerings imposed by Meridian Capital Group. This information may include estimates and projections prepared by Meridian Capital Group with respect to future events, and these future events may or may not actually occur. Such estimates and projections reflect various assumptions concerning anticipated results. While Meridian Capital Group believes these assumptions are reasonable, there can be no assurance that any of these estimates and projections will be correct. Therefore, actual results may vary materially from these estimates and projections. Any square footage dimensions set forth are approximate.

243 WEST 124TH STREET

HARLEM, NYC | Between Frederick Douglass & Adam Clayton Powell Jr. Boulevards

RETAIL FOR LEASE

FLOOR PLAN | SPACE B



JAMES FAMULARO
President

NOAM AZIZ
Director
212.468.5984
naziz@meridiancapital.com

NATHAN SHABOT
Associate
212.468.5933
nshabot@meridiancapital.com

ARIEL ILIAN
Associate
212.468.5986
ailian@meridiancapital.com



MERIDIAN
RETAIL LEASING

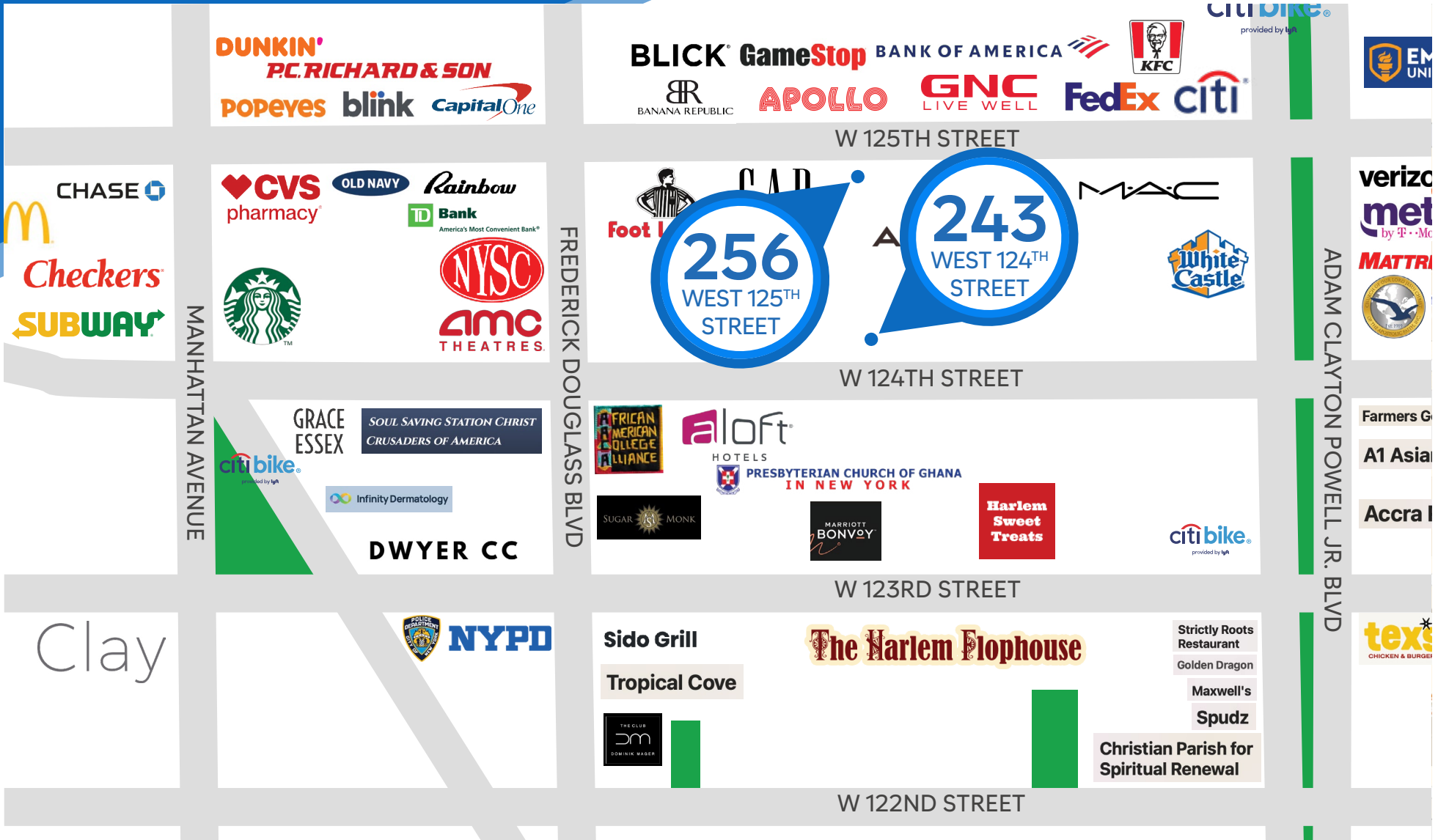
All information supplied is from sources deemed reliable and is furnished subject to errors, omissions, modifications, removal of the listing from sale or lease, and to any listing conditions, including the rates and manner of payment of commissions for particular offerings imposed by Meridian Capital Group. This information may include estimates and projections prepared by Meridian Capital Group with respect to future events, and these future events may or may not actually occur. Such estimates and projections reflect various assumptions concerning anticipated results. While Meridian Capital Group believes these assumptions are reasonable, there can be no assurance that any of these estimates and projections will be correct. Therefore, actual results may vary materially from these estimates and projections. Any square footage dimensions set forth are approximate.

243 WEST 124TH STREET

HARLEM, NYC | Between Frederick Douglass & Adam Clayton Powell Jr. Boulevards

RETAIL FOR LEASE

NEIGHBORS



JAMES FAMULARO
President

NOAM AZIZ
Director
212.468.5984
naziz@meridiancapital.com

NATHAN SHABOT
Associate
212.468.5933
nshabot@meridiancapital.com

ARIEL ILIAN
Associate
212.468.5986
ailian@meridiancapital.com



MERIDIAN
RETAIL LEASING

All information supplied is from sources deemed reliable and is furnished subject to errors, omissions, modifications, removal of the listing from sale or lease, and to any listing conditions, including the rates and manner of payment of commissions for particular offerings imposed by Meridian Capital Group. This information may include estimates and projections prepared by Meridian Capital Group with respect to future events, and these future events may or may not actually occur. Such estimates and projections reflect various assumptions concerning anticipated results. While Meridian Capital Group believes these assumptions are reasonable, there can be no assurance that any of these estimates and projections will be correct. Therefore, actual results may vary materially from these estimates and projections. Any square footage dimensions set forth are approximate.