

147

AVENUE A
EAST VILLAGE, NYC

Between East 9th & 10th Streets

RETAIL FOR LEASE



APPROXIMATE SIZE

Ground Floor: 800 SF + Basement

ASKING RENT

\$9,995/Month

POSSESSION

Immediate

TERM

Negotiable

FRONTAGE

10 FT

COMMENTS

- Previous restaurant space
- Vent in place
- Walk-in freezer in basement

NEIGHBORS

Blank Street • Village Square Pizza • Village Creperie • Tompkins Square Bagels • Murphy's • La Fleur Café • Horus Café • Joe & Pat's • Black Seed Bagels • Rakka • Goodnight Sonny

TRANSPORTATION

4 5 6 L F N Q R

PROPERTY INFORMATION

JAMES FAMULARO

President

BEN BIBERAJ

Senior Director

703.434.1461

bbiberaj@meridiancapital.com

ELLIOT WYGODA

Director

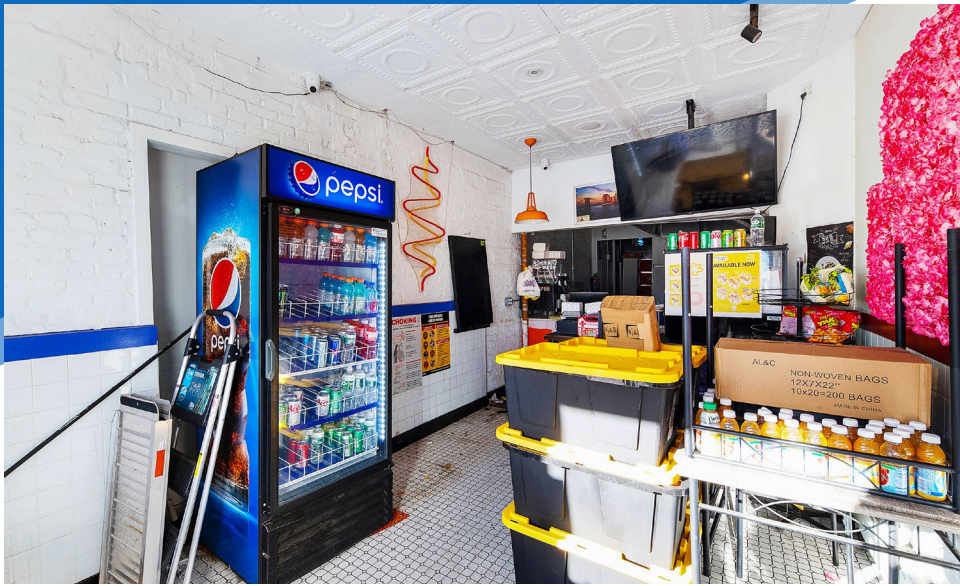
212.468.5968

ewygoda@meridiancapital.com



MERIDIAN
RETAIL LEASING

All information supplied is from sources deemed reliable and is furnished subject to errors, omissions, modifications, removal of the listing from sale or lease, and to any listing conditions, including the rates and manner of payment of commissions for particular offerings imposed by Meridian Capital Group. This information may include estimates and projections prepared by Meridian Capital Group with respect to future events, and these future events may or may not actually occur. Such estimates and projections reflect various assumptions concerning anticipated results. While Meridian Capital Group believes these assumptions are reasonable, there can be no assurance that any of these estimates and projections will be correct. Therefore, actual results may vary materially from these estimates and projections. Any square footage dimensions set forth are approximate.



INTERIOR

JAMES FAMULARO
President

BEN BIBERAJ
Senior Director
703.434.1461
bbiberaj@meridiancapital.com

ELLIOT WYGODA
Director
212.468.5968
ewygoda@meridiancapital.com



MERIDIAN
RETAIL LEASING

NEIGHBORS

SECOND AVENUE

FIRST AVENUE

AVENUE A

AVENUE B

147 AVENUE A

E 12TH STREET

E 11TH STREET

E 10TH STREET

E 9TH STREET

ST. MARKS PLACE

Businesses and Landmarks on Map:
 saltwater COFFEE, salma, S'MAC, Boris & Horton, brodo, SPES, SMØR, PILATES NOOK, BORRACHITO, el camion, dhom, The Party Box, citi bike, Ps 19 Asher Levy, NY Grill & Deli, AU ZATAR, Sahara East, Halal Food Truck, Atomic Wings, EAST SIDE COMMUNITY HIGH SCHOOL, citi bike, The York, HI-NOTE, FRANGOS, Madina Deli Shop, Skyla's, westville, Fishmarket II, FERNs, Jintan, Lè Phin, Beron Beron, KAVASUTRA, Sabor A Mexico Taqueria, Healthy Deli, Tompkins Finest Deli, BLANK STREET, COOKIE LADY, RAKKA, Evil Katsu, SUSHI LAB, VENERO'S, Lhasa, NOODLE BAR, gelatoville, HAGS, SNOWDAYS, Sweetooth, To Eat Sushi, Madame VO, SHABU-TATSU, Hard to Explain, TSUKIMI, La Cabra, Stickett Inn, MUD, Davey's Ice Cream, ROWDY TOASTER, VESELKA, Cabin, East Village Pizza, New Mizu Sushi, KIBO, Sly Fox, FRANKENSTEINS, PRQUITO'S, MOKO, UKRAINIAN EAST VILLAGE, SAINT, cafe maud, Mazyan, taqueria, Stromboli Pizza, vegan GRILL, OSAKANA, Kuppi Coffee, AT&T, nudibranch, Big Bar, WHISKY CELLAR, Blue & Gold Tavern, abraço, Tile Bar, David's, Habella, EAST VILLAGE SOCIAL, Crispiano, empellón, Dumpling Man, CRAFT + CARRY, BUA, Superiority Burger, GRAFTON, SHINN NEW YORK, RUFFIAN, St. Dymphna's, 7-ELEVEN, 11TH BAR, New York Public Library, desigalli, dream baby, MAIDEN LANE, NINETH STREET ESPRESSO, NOGGO-

JAMES FAMULARO
President

BEN BIBERAJ
Senior Director
703.434.1461
bbiberaj@meridiancapital.com

ELLIOT WYGODA
Director
212.468.5968
ewygoda@meridiancapital.com



MERIDIAN
RETAIL LEASING

All information supplied is from sources deemed reliable and is furnished subject to errors, omissions, modifications, removal of the listing from sale or lease, and to any listing conditions, including the rates and manner of payment of commissions for particular offerings imposed by Meridian Capital Group. This information may include estimates and projections prepared by Meridian Capital Group with respect to future events, and these future events may or may not actually occur. Such estimates and projections reflect various assumptions concerning anticipated results. While Meridian Capital Group believes these assumptions are reasonable, there can be no assurance that any of these estimates and projections will be correct. Therefore, actual results may vary materially from these estimates and projections. Any square footage dimensions set forth are approximate.