

# 138

## BOWERY NOLITA, NYC

Between Broome & Grand Streets

RESTAURANT/RETAIL FOR LEASE

### APPROXIMATE SIZE

Ground Floor: 5,956 SF  
Mezzanine: 2,380 SF  
Lower Level: 3,981 SF

### ASKING RENT

\$85,000/Month

### POSSESSION

Immediate

### TERM

10-15 Years

### FRONTAGE

50 FT

### COMMENTS

- Beautiful white-box space at the base of the 4-star, 88-room 138 Bowery Hotel
- Gas and venting in place
- Great foot traffic with a blend of tourism and surrounding residents
- Located in the heart of Manhattan's trendiest F&B strip

### NEIGHBORS

Moxy Hotel • Silver Lining Lounge • The Highlight Room • Sake No Hana • Loosie's • Prince Tea House • Piacere • Casa Bocado • Wick and Pour • Shoo Shoo Nolita

### TRANSPORTATION



PROPERTY INFORMATION

### JAMES FAMULARO

President  
646.658.7373  
jfamularo@meridiancapital.com

### BOBBY ORTENSE

Director  
212.468.5953  
bortense@meridiancapital.com

### COLE KLEPPINGER

Associate  
212.468.5993  
ckleppinger@meridiancapital.com



**MERIDIAN**  
RETAIL LEASING

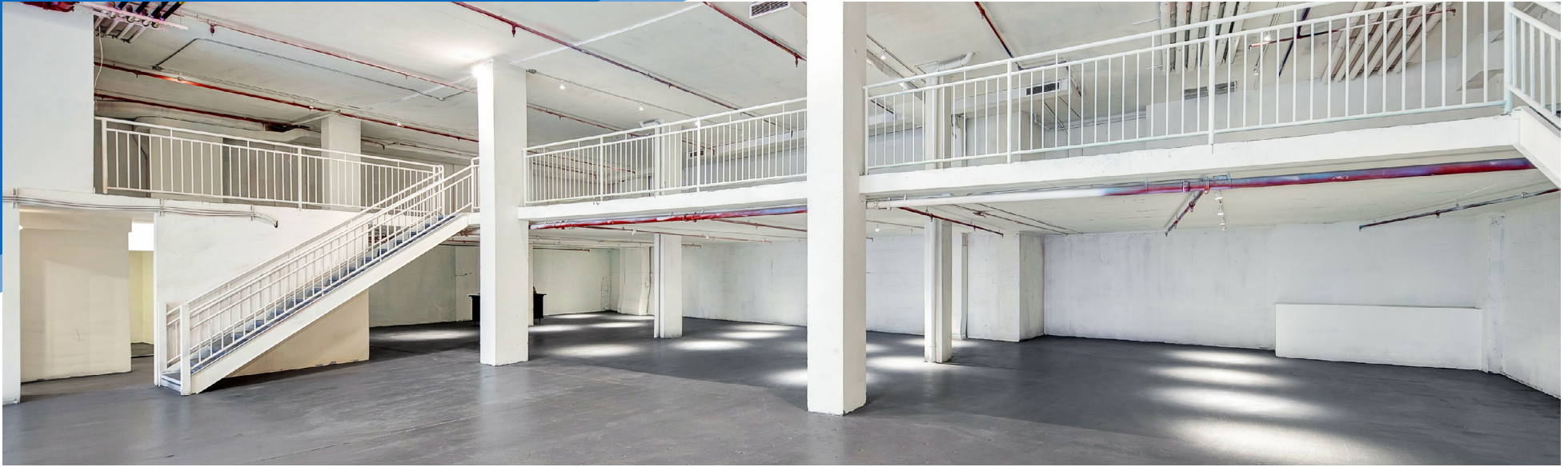
All information supplied is from sources deemed reliable and is furnished subject to errors, omissions, modifications, removal of the listing from sale or lease, and to any listing conditions, including the rates and manner of payment of commissions for particular offerings imposed by Meridian Capital Group. This information may include estimates and projections prepared by Meridian Capital Group with respect to future events, and these future events may or may not actually occur. Such estimates and projections reflect various assumptions concerning anticipated results. While Meridian Capital Group believes these assumptions are reasonable, there can be no assurance that any of these estimates and projections will be correct. Therefore, actual results may vary materially from these estimates and projections. Any square footage dimensions set forth are approximate.



# 138 BOWERY

NOLITA, NYC | Between Broome and Grand Streets

VENTED RETAIL FOR LEASE



INTERIOR

## JAMES FAMULARO

President  
646.658.7373  
jfamularo@meridiancapital.com

## BOBBY ORTENSE

Director  
212.468.5953  
bortense@meridiancapital.com

## COLE KLEPPINGER

Associate  
212.468.5993  
ckleppinger@meridiancapital.com



**MERIDIAN**  
RETAIL LEASING

All information supplied is from sources deemed reliable and is furnished subject to errors, omissions, modifications, removal of the listing from sale or lease, and to any listing conditions, including the rates and manner of payment of commissions for particular offerings imposed by Meridian Capital Group. This information may include estimates and projections prepared by Meridian Capital Group with respect to future events, and these future events may or may not actually occur. Such estimates and projections reflect various assumptions concerning anticipated results. While Meridian Capital Group believes these assumptions are reasonable, there can be no assurance that any of these estimates and projections will be correct. Therefore, actual results may vary materially from these estimates and projections. Any square footage dimensions set forth are approximate.



# 138 BOWERY

NOLITA, NYC | Between Broome and Grand Streets

VENTED RETAIL FOR LEASE



INTERIOR

## JAMES FAMULARO

President  
646.658.7373  
jfamularo@meridiancapital.com

## BOBBY ORTENSE

Director  
212.468.5953  
bortense@meridiancapital.com

## COLE KLEPPINGER

Associate  
212.468.5993  
ckleppinger@meridiancapital.com



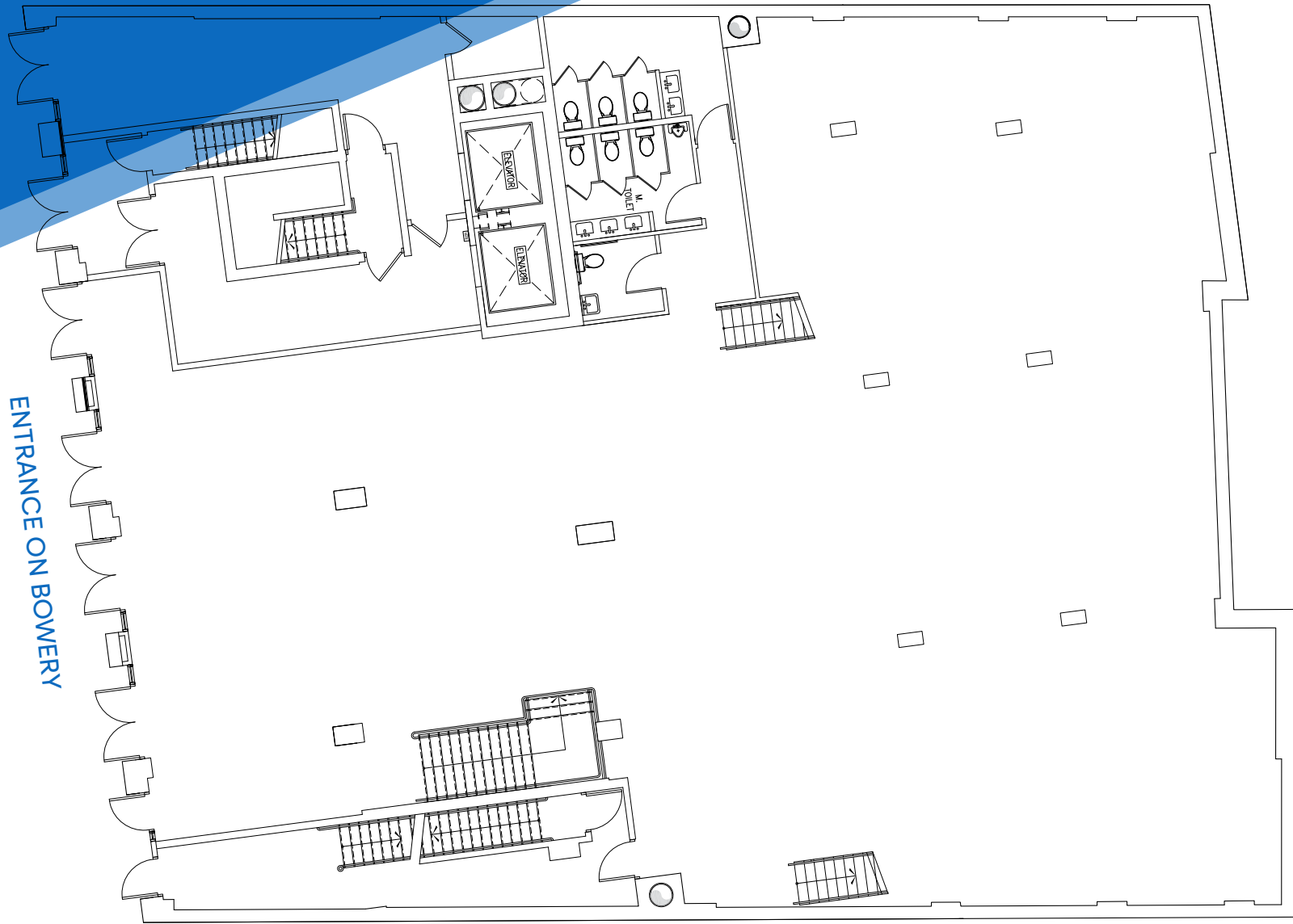
**MERIDIAN**  
RETAIL LEASING

All information supplied is from sources deemed reliable and is furnished subject to errors, omissions, modifications, removal of the listing from sale or lease, and to any listing conditions, including the rates and manner of payment of commissions for particular offerings imposed by Meridian Capital Group. This information may include estimates and projections prepared by Meridian Capital Group with respect to future events, and these future events may or may not actually occur. Such estimates and projections reflect various assumptions concerning anticipated results. While Meridian Capital Group believes these assumptions are reasonable, there can be no assurance that any of these estimates and projections will be correct. Therefore, actual results may vary materially from these estimates and projections. Any square footage dimensions set forth are approximate.

# 138 BOWERY

NOLITA, NYC | Between Broome and Grand Streets

VENTED RETAIL FOR LEASE



FLOOR PLAN | GROUND FLOOR

### JAMES FAMULARO

President  
646.658.7373  
jfamularo@meridiancapital.com

### BOBBY ORTENSE

Director  
212.468.5953  
bortense@meridiancapital.com

### COLE KLEPPINGER

Associate  
212.468.5993  
ckleppinger@meridiancapital.com



**MERIDIAN**  
RETAIL LEASING

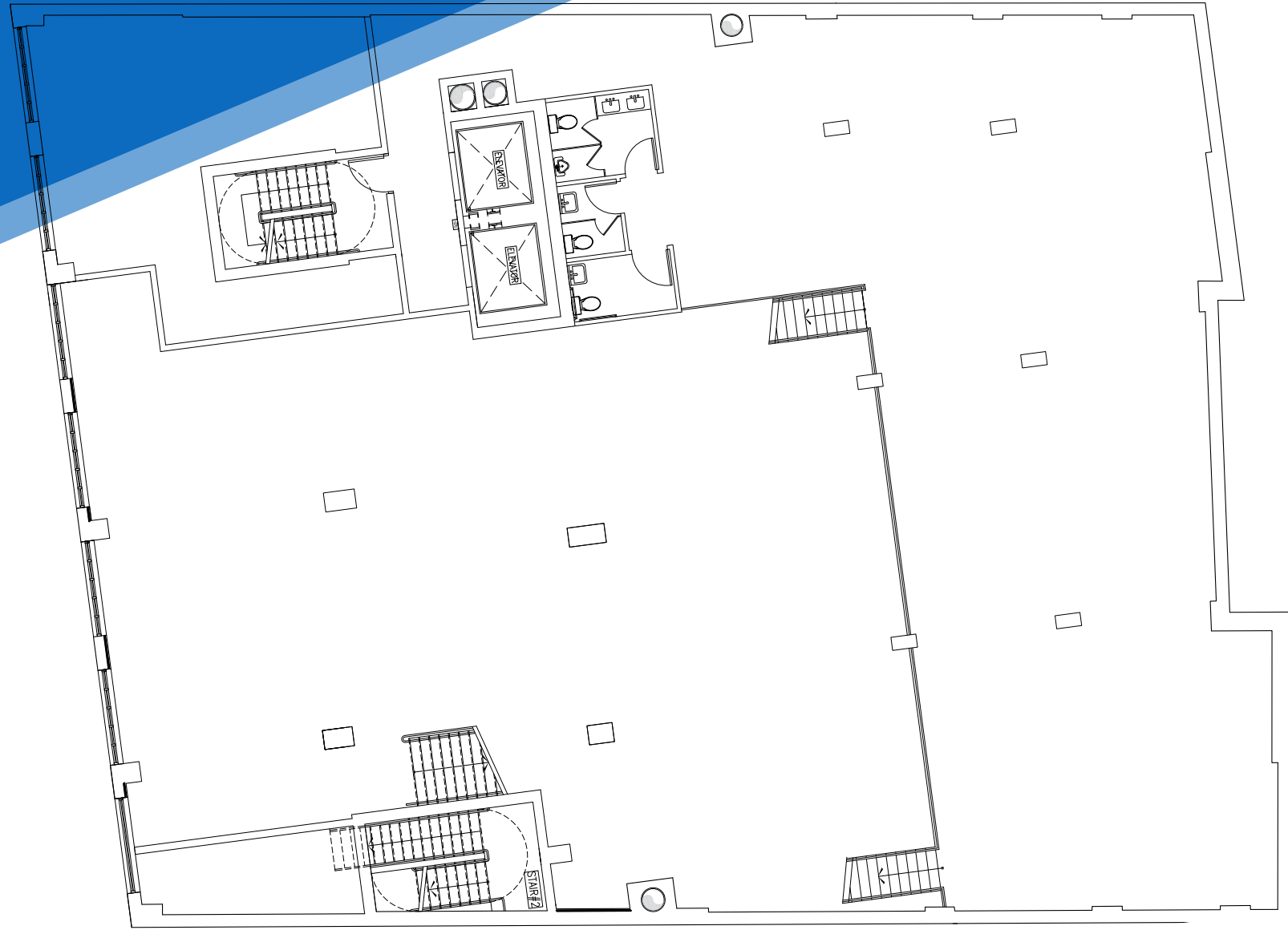
All information supplied is from sources deemed reliable and is furnished subject to errors, omissions, modifications, removal of the listing from sale or lease, and to any listing conditions, including the rates and manner of payment of commissions for particular offerings imposed by Meridian Capital Group. This information may include estimates and projections prepared by Meridian Capital Group with respect to future events, and these future events may or may not actually occur. Such estimates and projections reflect various assumptions concerning anticipated results. While Meridian Capital Group believes these assumptions are reasonable, there can be no assurance that any of these estimates and projections will be correct. Therefore, actual results may vary materially from these estimates and projections. Any square footage dimensions set forth are approximate.

# 138 BOWERY

NOLITA, NYC | Between Broome and Grand Streets

VENTED RETAIL FOR LEASE

FLOOR PLAN | MEZZANINE



### JAMES FAMULARO

President  
646.658.7373  
jfamularo@meridiancapital.com

### BOBBY ORTENSE

Director  
212.468.5953  
bortense@meridiancapital.com

### COLE KLEPPINGER

Associate  
212.468.5993  
ckleppinger@meridiancapital.com



**MERIDIAN**  
RETAIL LEASING

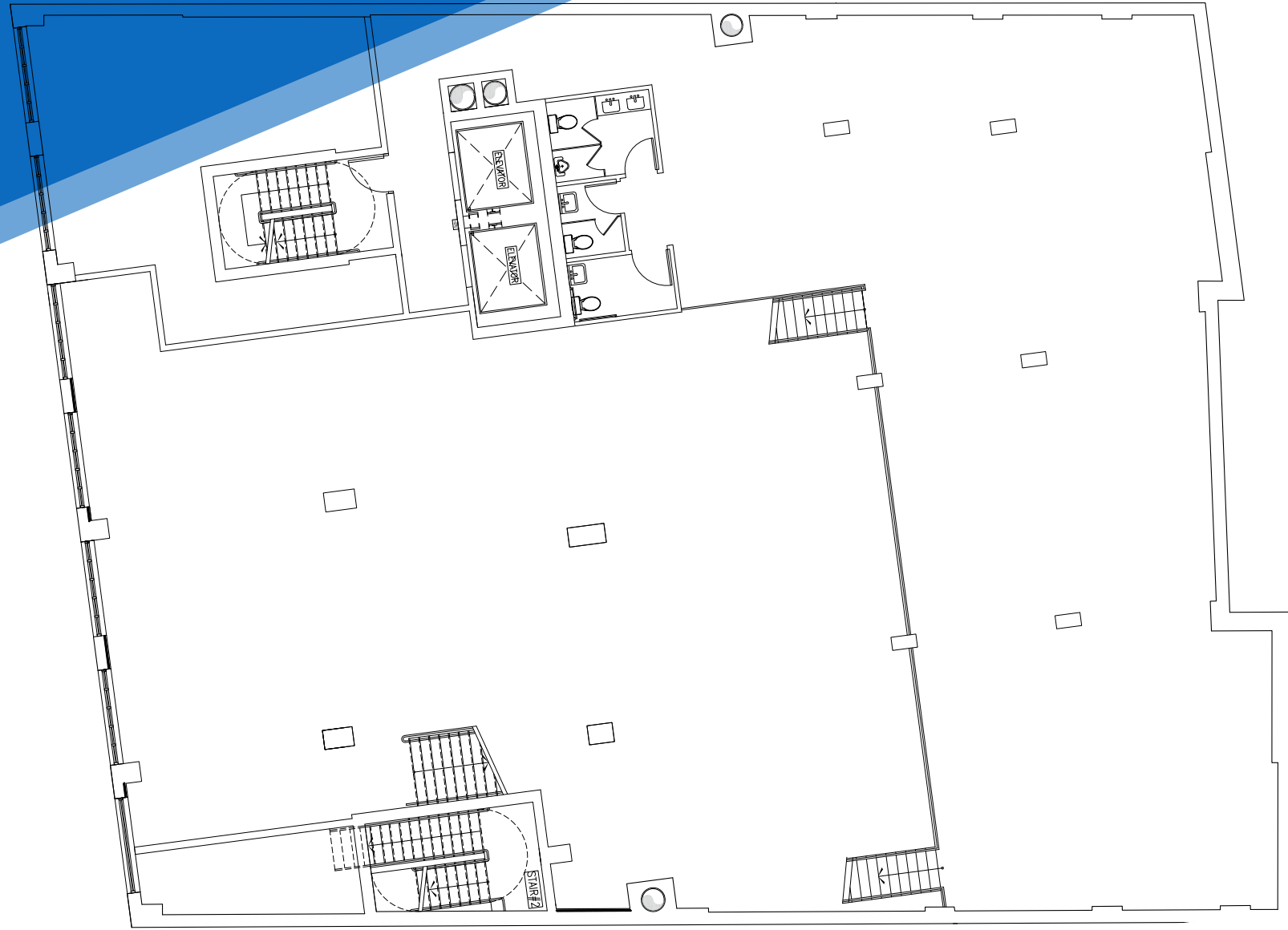
All information supplied is from sources deemed reliable and is furnished subject to errors, omissions, modifications, removal of the listing from sale or lease, and to any listing conditions, including the rates and manner of payment of commissions for particular offerings imposed by Meridian Capital Group. This information may include estimates and projections prepared by Meridian Capital Group with respect to future events, and these future events may or may not actually occur. Such estimates and projections reflect various assumptions concerning anticipated results. While Meridian Capital Group believes these assumptions are reasonable, there can be no assurance that any of these estimates and projections will be correct. Therefore, actual results may vary materially from these estimates and projections. Any square footage dimensions set forth are approximate.

# 138 BOWERY

NOLITA, NYC | Between Broome and Grand Streets

VENTED RETAIL FOR LEASE

FLOOR PLAN | LOWER LEVEL



### JAMES FAMULARO

President  
646.658.7373  
jfamularo@meridiancapital.com

### BOBBY ORTENSE

Director  
212.468.5953  
bortense@meridiancapital.com

### COLE KLEPPINGER

Associate  
212.468.5993  
ckleppinger@meridiancapital.com



**MERIDIAN**  
RETAIL LEASING

All information supplied is from sources deemed reliable and is furnished subject to errors, omissions, modifications, removal of the listing from sale or lease, and to any listing conditions, including the rates and manner of payment of commissions for particular offerings imposed by Meridian Capital Group. This information may include estimates and projections prepared by Meridian Capital Group with respect to future events, and these future events may or may not actually occur. Such estimates and projections reflect various assumptions concerning anticipated results. While Meridian Capital Group believes these assumptions are reasonable, there can be no assurance that any of these estimates and projections will be correct. Therefore, actual results may vary materially from these estimates and projections. Any square footage dimensions set forth are approximate.



# 138 BOWERY

NOLITA, NYC | Between Broome and Grand Streets

## VENTED RETAIL FOR LEASE



NEIGHBORS

**JAMES FAMULARO**  
 President  
 646.658.7373  
 jfamularo@meridiancapital.com

**BOBBY ORTENSE**  
 Director  
 212.468.5953  
 bortense@meridiancapital.com

**COLE KLEPPINGER**  
 Associate  
 212.468.5993  
 ckleppinger@meridiancapital.com



**MERIDIAN**  
 RETAIL LEASING

All information supplied is from sources deemed reliable and is furnished subject to errors, omissions, modifications, removal of the listing from sale or lease, and to any listing conditions, including the rates and manner of payment of commissions for particular offerings imposed by Meridian Capital Group. This information may include estimates and projections prepared by Meridian Capital Group with respect to future events, and these future events may or may not actually occur. Such estimates and projections reflect various assumptions concerning anticipated results. While Meridian Capital Group believes these assumptions are reasonable, there can be no assurance that any of these estimates and projections will be correct. Therefore, actual results may vary materially from these estimates and projections. Any square footage dimensions set forth are approximate.