

132

CHURCH AVENUE KENSINGTON, BROOKLYN

Corner of Beverley Road & East 2nd Street

OFFICE FOR LEASE



APPROXIMATE SIZE

2nd Floor (2 Offices): 1,500 SF Each
3rd Floor (2 Offices): 1,500 SF Each

ASKING RENT

Upon Request

POSSESSION

Immediate

TERM

Negotiable

COMMENTS

- Prime corner location with heavy foot and car traffic
- National retailers surrounding
- One-block from the F&G subway stations

NEIGHBORS

Carnival Fruits & Vegetables • Denny's Bar • Dunkin'
• Walgreens • Metro by T-Mobile • Korner Pizzeria
• Toby's Ice Cream • Carvel • Beverley Pizza

TRANSPORTATION



PROPERTY INFORMATION

JAMES FAMULARO
President

JOSEPH HARARY
Director
212.468.5978
jharary@meridiancapital.com

SHAYA KATZ
Associate
212.468.5991
shaya.katz@meridiancapital.com

NATHAN SHABOT
Associate
212.468.5933
nshabot@meridiancapital.com

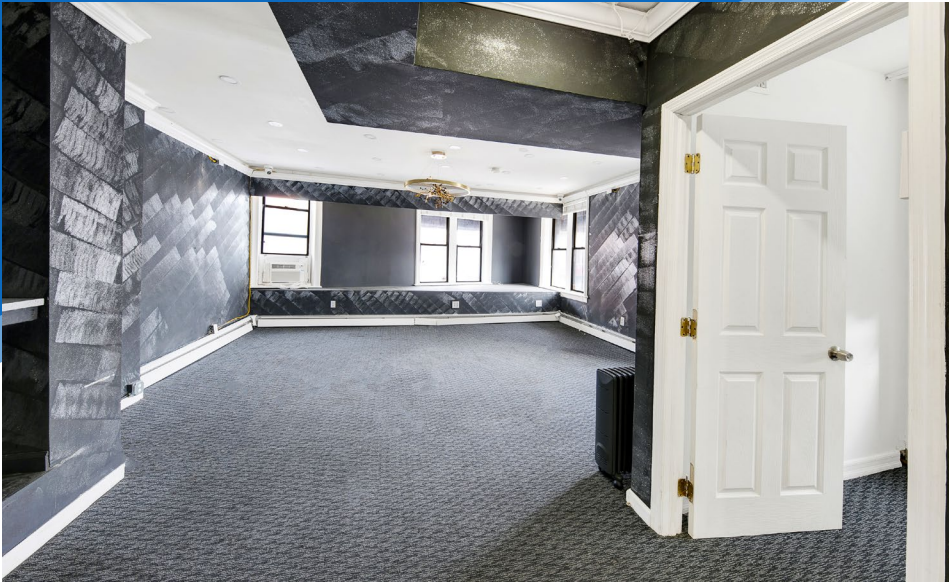


All information supplied is from sources deemed reliable and is furnished subject to errors, omissions, modifications, removal of the listing from sale or lease, and to any listing conditions, including the rates and manner of payment of commissions for particular offerings imposed by Meridian Capital Group. This information may include estimates and projections prepared by Meridian Capital Group with respect to future events, and these future events may or may not actually occur. Such estimates and projections reflect various assumptions concerning anticipated results. While Meridian Capital Group believes these assumptions are reasonable, there can be no assurance that any of these estimates and projections will be correct. Therefore, actual results may vary materially from these estimates and projections. Any square footage dimensions set forth are approximate.

132 CHURCH AVENUE

KENSINGTON, BROOKLYN | Corner of Beverley Road and East 2nd Street

OFFICE FOR LEASE



INTERIOR

JAMES FAMULARO
President

JOSEPH HARARY
Director
212.468.5978
jharary@meridiancapital.com

SHAYA KATZ
Associate
212.468.5991
shaya.katz@meridiancapital.com

NATHAN SHABOT
Associate
212.468.5933
nshabot@meridiancapital.com



All information supplied is from sources deemed reliable and is furnished subject to errors, omissions, modifications, removal of the listing from sale or lease, and to any listing conditions, including the rates and manner of payment of commissions for particular offerings imposed by Meridian Capital Group. This information may include estimates and projections prepared by Meridian Capital Group with respect to future events, and these future events may or may not actually occur. Such estimates and projections reflect various assumptions concerning anticipated results. While Meridian Capital Group believes these assumptions are reasonable, there can be no assurance that any of these estimates and projections will be correct. Therefore, actual results may vary materially from these estimates and projections. Any square footage dimensions set forth are approximate.

132 CHURCH AVENUE

KENSINGTON, BROOKLYN | Corner of Beverley Road and East 2nd Street

OFFICE FOR LEASE



INTERIOR

JAMES FAMULARO
President

JOSEPH HARARY
Director
212.468.5978
jharary@meridiancapital.com

SHAYA KATZ
Associate
212.468.5991
shaya.katz@meridiancapital.com

NATHAN SHABOT
Associate
212.468.5933
nshabot@meridiancapital.com



All information supplied is from sources deemed reliable and is furnished subject to errors, omissions, modifications, removal of the listing from sale or lease, and to any listing conditions, including the rates and manner of payment of commissions for particular offerings imposed by Meridian Capital Group. This information may include estimates and projections prepared by Meridian Capital Group with respect to future events, and these future events may or may not actually occur. Such estimates and projections reflect various assumptions concerning anticipated results. While Meridian Capital Group believes these assumptions are reasonable, there can be no assurance that any of these estimates and projections will be correct. Therefore, actual results may vary materially from these estimates and projections. Any square footage dimensions set forth are approximate.

132 CHURCH AVENUE

KENSINGTON, BROOKLYN | Corner of Beverley Road and East 2nd Street

OFFICE FOR LEASE

NEIGHBORS



JAMES FAMULARO
President

JOSEPH HARARY
Director
212.468.5978
jharary@meridiancapital.com

SHAYA KATZ
Associate
212.468.5991
shaya.katz@meridiancapital.com

NATHAN SHABOT
Associate
212.468.5933
nshabot@meridiancapital.com



All information supplied is from sources deemed reliable and is furnished subject to errors, omissions, modifications, removal of the listing from sale or lease, and to any listing conditions, including the rates and manner of payment of commissions for particular offerings imposed by Meridian Capital Group. This information may include estimates and projections prepared by Meridian Capital Group with respect to future events, and these future events may or may not actually occur. Such estimates and projections reflect various assumptions concerning anticipated results. While Meridian Capital Group believes these assumptions are reasonable, there can be no assurance that any of these estimates and projections will be correct. Therefore, actual results may vary materially from these estimates and projections. Any square footage dimensions set forth are approximate.