

# 92

## AVENUE C EAST VILLAGE, NYC

Corner of Avenue C & East 6<sup>th</sup> Street

RETAIL FOR LEASE



### APPROXIMATE SIZE

#### Retail

Ground Floor: 1,000 SF + 350 SF Basement

#### Community Facility

First Floor: 272 SF

### ASKING RENT

Retail: \$8,500/Month

Community Facility: \$2,600/Month

### POSSESSION

Immediate

### TERM

Negotiable

### FRONTAGE

30 FT Wraparound

### COMMENTS

- Newly constructed corner retail space
- Large wraparound windows and high ceilings
- Prime corner with high foot/car traffic
- Can be vented

### NEIGHBORS

Bobwhite Counter • Accidental Bar • Alphabet City Wine Co. • HiLot • Joyface • Ding-A-Ling • Food Universe • Thirteen Water • Satsko • Horus Café

### TRANSPORTATION



### JAMES FAMULARO

President

### JOSEPH HARARY

Associate

212.468.5978

jharary@meridiancapital.com

### SHAYA KATZ

Associate

212.468.5991

shaya.katz@meridiancapital.com



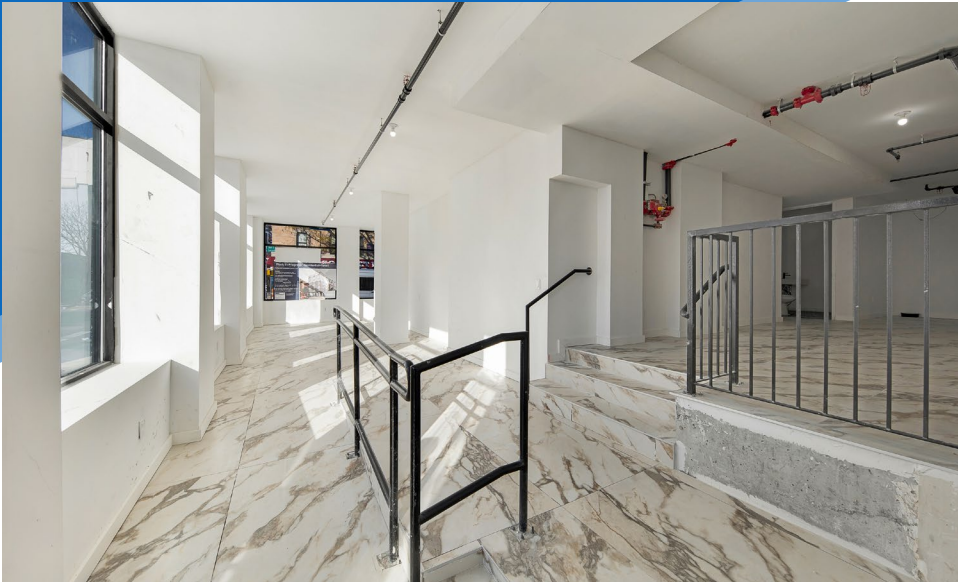
**MERIDIAN**  
RETAIL LEASING

All information supplied is from sources deemed reliable and is furnished subject to errors, omissions, modifications, removal of the listing from sale or lease, and to any listing conditions, including the rates and manner of payment of commissions for particular offerings imposed by Meridian Capital Group. This information may include estimates and projections prepared by Meridian Capital Group with respect to future events, and these future events may or may not actually occur. Such estimates and projections reflect various assumptions concerning anticipated results. While Meridian Capital Group believes these assumptions are reasonable, there can be no assurance that any of these estimates and projections will be correct. Therefore, actual results may vary materially from these estimates and projections. Any square footage dimensions set forth are approximate.

# 92 AVENUE C

EAST VILLAGE, NYC | Corner of Avenue C and East 6<sup>th</sup> Street

RETAIL FOR LEASE



INTERIOR

**JAMES FAMULARO**  
President

**JOSEPH HARARY**  
Associate  
212.468.5978  
jharary@meridiancapital.com

**SHAYA KATZ**  
Associate  
212.468.5991  
shaya.katz@meridiancapital.com



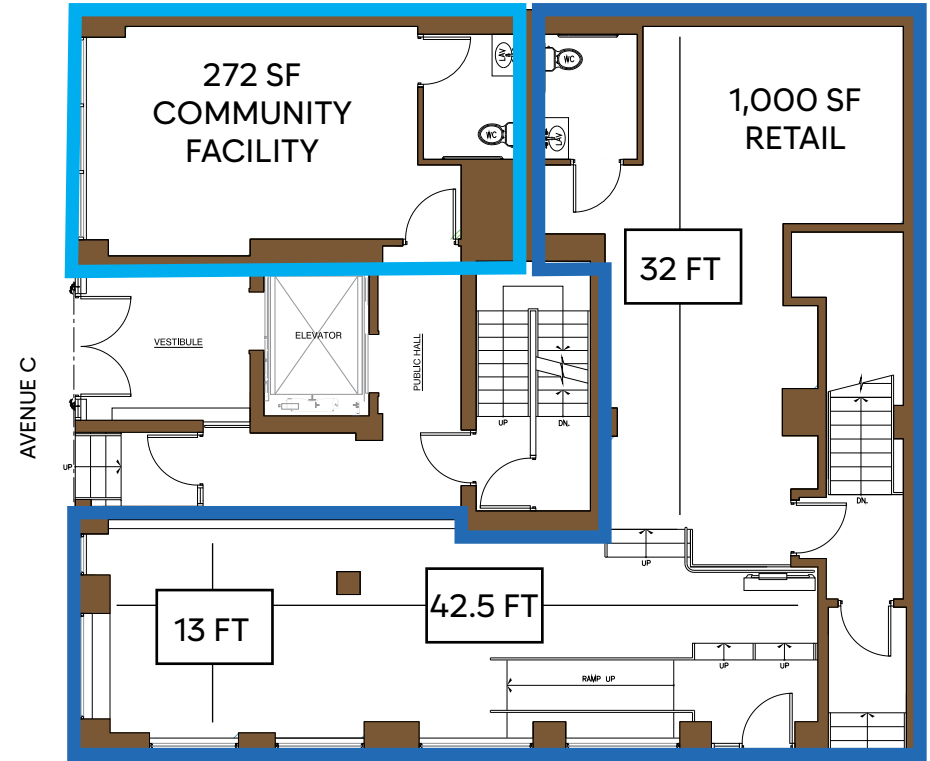
**MERIDIAN**  
RETAIL LEASING

All information supplied is from sources deemed reliable and is furnished subject to errors, omissions, modifications, removal of the listing from sale or lease, and to any listing conditions, including the rates and manner of payment of commissions for particular offerings imposed by Meridian Capital Group. This information may include estimates and projections prepared by Meridian Capital Group with respect to future events, and these future events may or may not actually occur. Such estimates and projections reflect various assumptions concerning anticipated results. While Meridian Capital Group believes these assumptions are reasonable, there can be no assurance that any of these estimates and projections will be correct. Therefore, actual results may vary materially from these estimates and projections. Any square footage dimensions set forth are approximate.



EAST 6TH STREET

LOWER LEVEL



EAST 6TH STREET

GROUND FLOOR

JAMES FAMULARO  
 President

JOSEPH HARARY  
 Associate  
 212.468.5978  
 jharary@meridiancapital.com

SHAYA KATZ  
 Associate  
 212.468.5991  
 shaya.katz@meridiancapital.com

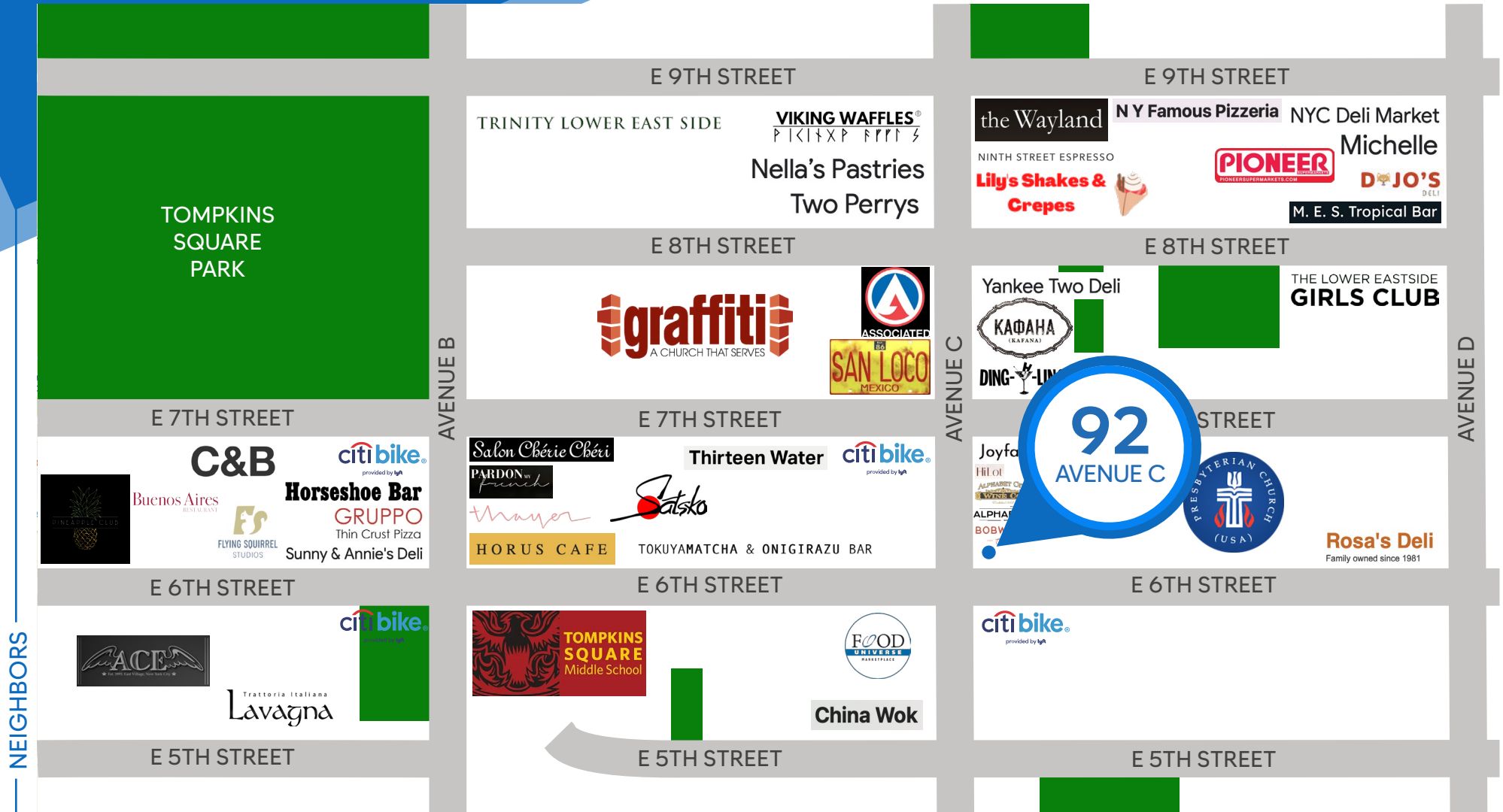


**MERIDIAN**  
 RETAIL LEASING

92 AVENUE C

EAST VILLAGE, NYC | Corner of Avenue C and East 6<sup>th</sup> Street

RETAIL FOR LEASE



JAMES FAMULARO  
President

JOSEPH HARARY  
Associate  
212.468.5978  
jharary@meridiancapital.com

SHAYA KATZ  
Associate  
212.468.5991  
shaya.katz@meridiancapital.com



**MERIDIAN**  
RETAIL LEASING

All information supplied is from sources deemed reliable and is furnished subject to errors, omissions, modifications, removal of the listing from sale or lease, and to any listing conditions, including the rates and manner of payment of commissions for particular offerings imposed by Meridian Capital Group. This information may include estimates and projections prepared by Meridian Capital Group with respect to future events, and these future events may or may not actually occur. Such estimates and projections reflect various assumptions concerning anticipated results. While Meridian Capital Group believes these assumptions are reasonable, there can be no assurance that any of these estimates and projections will be correct. Therefore, actual results may vary materially from these estimates and projections. Any square footage dimensions set forth are approximate.