

59

GRAND STREET SOHO, NYC

Between West Broadway & Wooster Street

RESTAURANT FOR LEASE

APPROXIMATE SIZE

1,500 SF + Full Basement

ASKING RENT

\$21,854/Month

Key-Money Upon Request

POSSESSION

Immediate

TERM

10-15 Years

FRONTAGE

25 FT

COMMENTS

- Turn-key bar/restaurant in the heart of SoHo
- Currently "The Ruby", previously home to Keith McNally's beloved "Lucky Strike" of 30+ years
- Full basement with large prep area, 2 walk-in refrigerators, small office, and dry storage space
- 4AM liquor license in place

NEIGHBORS

Toad Hall • Papatzal • Il Mulino • IGK Salon
• Flipper's • Felix Bar • Bang Bang Tattoo •
SoHo Grand Hotel • Maison Close • Little
Ways • Oliver Peoples • MAMO • Bisou

TRANSPORTATION

1 N Q R W A C E



PROPERTY INFORMATION

JAMES FAMULARO

President

JUSTIN BUSTAMANTE

Associate

212.468.5914

jbustamante@meridiancapital.com



MERIDIAN
RETAIL LEASING

All information supplied is from sources deemed reliable and is furnished subject to errors, omissions, modifications, removal of the listing from sale or lease, and to any listing conditions, including the rates and manner of payment of commissions for particular offerings imposed by Meridian Capital Group. This information may include estimates and projections prepared by Meridian Capital Group with respect to future events, and these future events may or may not actually occur. Such estimates and projections reflect various assumptions concerning anticipated results. While Meridian Capital Group believes these assumptions are reasonable, there can be no assurance that any of these estimates and projections will be correct. Therefore, actual results may vary materially from these estimates and projections. Any square footage dimensions set forth are approximate.

59 GRAND STREET

SOHO, NYC | Between West Broadway and Wooster Street

RESTAURANT FOR LEASE



INTERIOR

JAMES FAMULARO
President

JUSTIN BUSTAMANTE
Associate
212.468.5914
jbustamante@meridiancapital.com



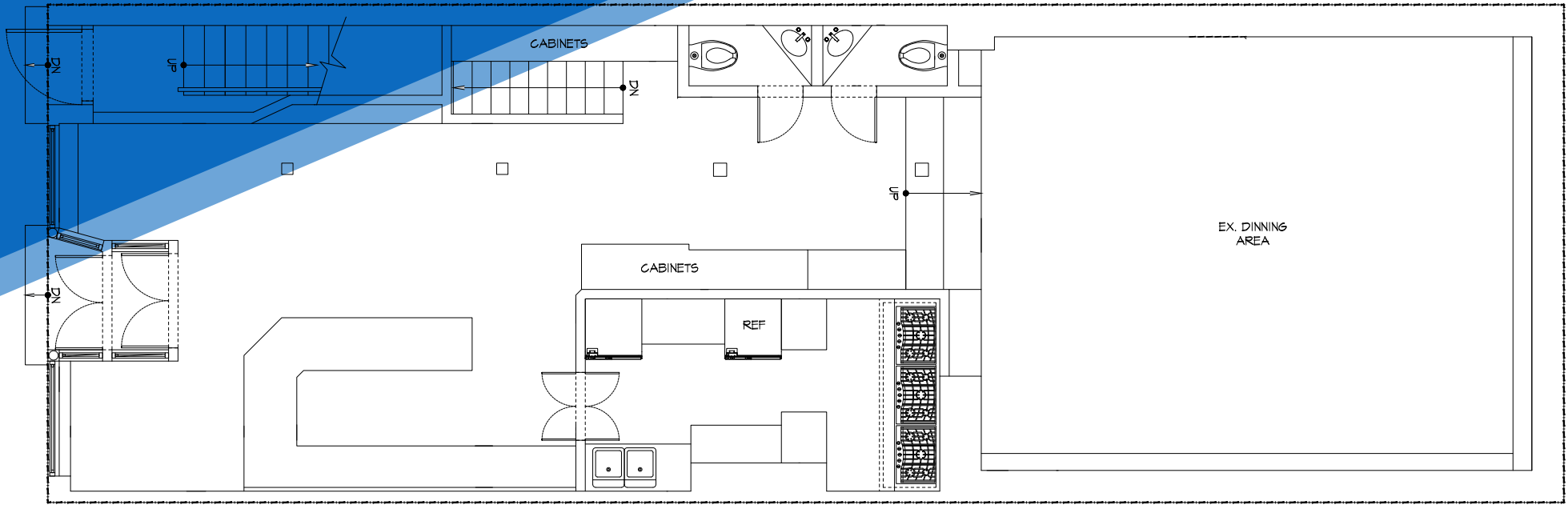
MERIDIAN
RETAIL LEASING

All information supplied is from sources deemed reliable and is furnished subject to errors, omissions, modifications, removal of the listing from sale or lease, and to any listing conditions, including the rates and manner of payment of commissions for particular offerings imposed by Meridian Capital Group. This information may include estimates and projections prepared by Meridian Capital Group with respect to future events, and these future events may or may not actually occur. Such estimates and projections reflect various assumptions concerning anticipated results. While Meridian Capital Group believes these assumptions are reasonable, there can be no assurance that any of these estimates and projections will be correct. Therefore, actual results may vary materially from these estimates and projections. Any square footage dimensions set forth are approximate.

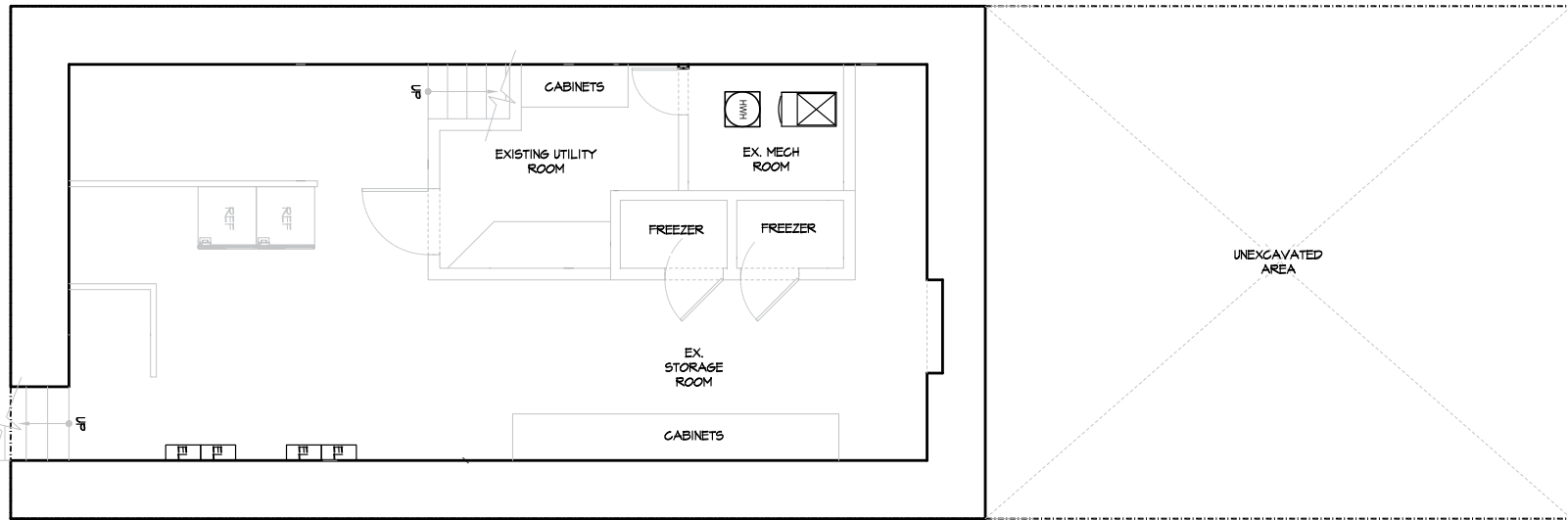
59 GRAND STREET

SOHO, NYC | Between West Broadway and Wooster Street

RESTAURANT FOR LEASE



GROUND FLOOR



BASEMENT

FLOOR PLANS

JAMES FAMULARO
President

JUSTIN BUSTAMANTE
Associate
212.468.5914
jbustamante@meridiancapital.com



MERIDIAN
RETAIL LEASING

All information supplied is from sources deemed reliable and is furnished subject to errors, omissions, modifications, removal of the listing from sale or lease, and to any listing conditions, including the rates and manner of payment of commissions for particular offerings imposed by Meridian Capital Group. This information may include estimates and projections prepared by Meridian Capital Group with respect to future events, and these future events may or may not actually occur. Such estimates and projections reflect various assumptions concerning anticipated results. While Meridian Capital Group believes these assumptions are reasonable, there can be no assurance that any of these estimates and projections will be correct. Therefore, actual results may vary materially from these estimates and projections. Any square footage dimensions set forth are approximate.

59 GRAND STREET

SOHO, NYC | Between West Broadway and Wooster Street

RESTAURANT FOR LEASE



NEIGHBORS

JAMES FAMULARO
President

JUSTIN BUSTAMANTE
Associate
212.468.5914
jbustamante@meridiancapital.com



MERIDIAN
RETAIL LEASING

All information supplied is from sources deemed reliable and is furnished subject to errors, omissions, modifications, removal of the listing from sale or lease, and to any listing conditions, including the rates and manner of payment of commissions for particular offerings imposed by Meridian Capital Group. This information may include estimates and projections prepared by Meridian Capital Group with respect to future events, and these future events may or may not actually occur. Such estimates and projections reflect various assumptions concerning anticipated results. While Meridian Capital Group believes these assumptions are reasonable, there can be no assurance that any of these estimates and projections will be correct. Therefore, actual results may vary materially from these estimates and projections. Any square footage dimensions set forth are approximate.