

# 645

## UNION STREET GOWANUS, BROOKLYN

Between Third & Fourth Avenues

LOWER LEVEL RESTAURANT FOR LEASE

### APPROXIMATE SIZE

Lower Level: 6,537 SF

### ASKING RENT

\$23,500/Month

### POSSESSION

Immediate

### TERM

Long Term

### CEILING HEIGHTS

18 FT in Lower Level

### COMMENTS

- Turn-key restaurant at the base of Sonder Hotel
- Full kitchen with brand-new state-of-the-art equipment
- ADA access via elevator throughout
- Features dining room, courtyard, and lounge with rooftop available
- Unique skylight, large windows, and high ceilings
- Designated entrance for restaurant
- Next door to a newly developed luxury 200-unit high-rise building with Class A retail
- Subway station within half a block and 5 blocks from the Barclays Center

### NEIGHBORS

Sara June • Gowanus Gardens Bar + Kitchen  
• Threes Brewing • Claro • Brooklyn Music  
Factory • Wild West Brewing Co. • Dinosaur  
Bar-B-Que • Lucky 13 Saloon • Kick Axe Throwing  
• Delilah Salon • Hilton • Born • Starbucks

### TRANSPORTATION

**N R W D**

### JAMES FAMULARO

President  
646.658.7373  
jfamularo@meridiancapital.com

### BOBBY ORTENSE

Director  
212.468.5953  
bortense@meridiancapital.com

### MARCELO DEMORAES

Associate  
212.468.5904  
mdemoraes@meridiancapital.com



**MERIDIAN**  
RETAIL LEASING

All information supplied is from sources deemed reliable and is furnished subject to errors, omissions, modifications, removal of the listing from sale or lease, and to any listing conditions, including the rates and manner of payment of commissions for particular offerings imposed by Meridian Capital Group. This information may include estimates and projections prepared by Meridian Capital Group with respect to future events, and these future events may or may not actually occur. Such estimates and projections reflect various assumptions concerning anticipated results. While Meridian Capital Group believes these assumptions are reasonable, there can be no assurance that any of these estimates and projections will be correct. Therefore, actual results may vary materially from these estimates and projections. Any square footage dimensions set forth are approximate.



# 645 UNION STREET

GOWANUS, BROOKLYN | Between Third and Fourth Avenues

## LOWER LEVEL RESTAURANT FOR LEASE



INTERIOR

**JAMES FAMULARO**

President  
646.658.7373  
jfamularo@meridiancapital.com

**BOBBY ORTENSE**

Director  
212.468.5953  
bortense@meridiancapital.com

**MARCELO DEMORAES**

Associate  
212.468.5904  
mdemoraes@meridiancapital.com



**MERIDIAN**  
RETAIL LEASING

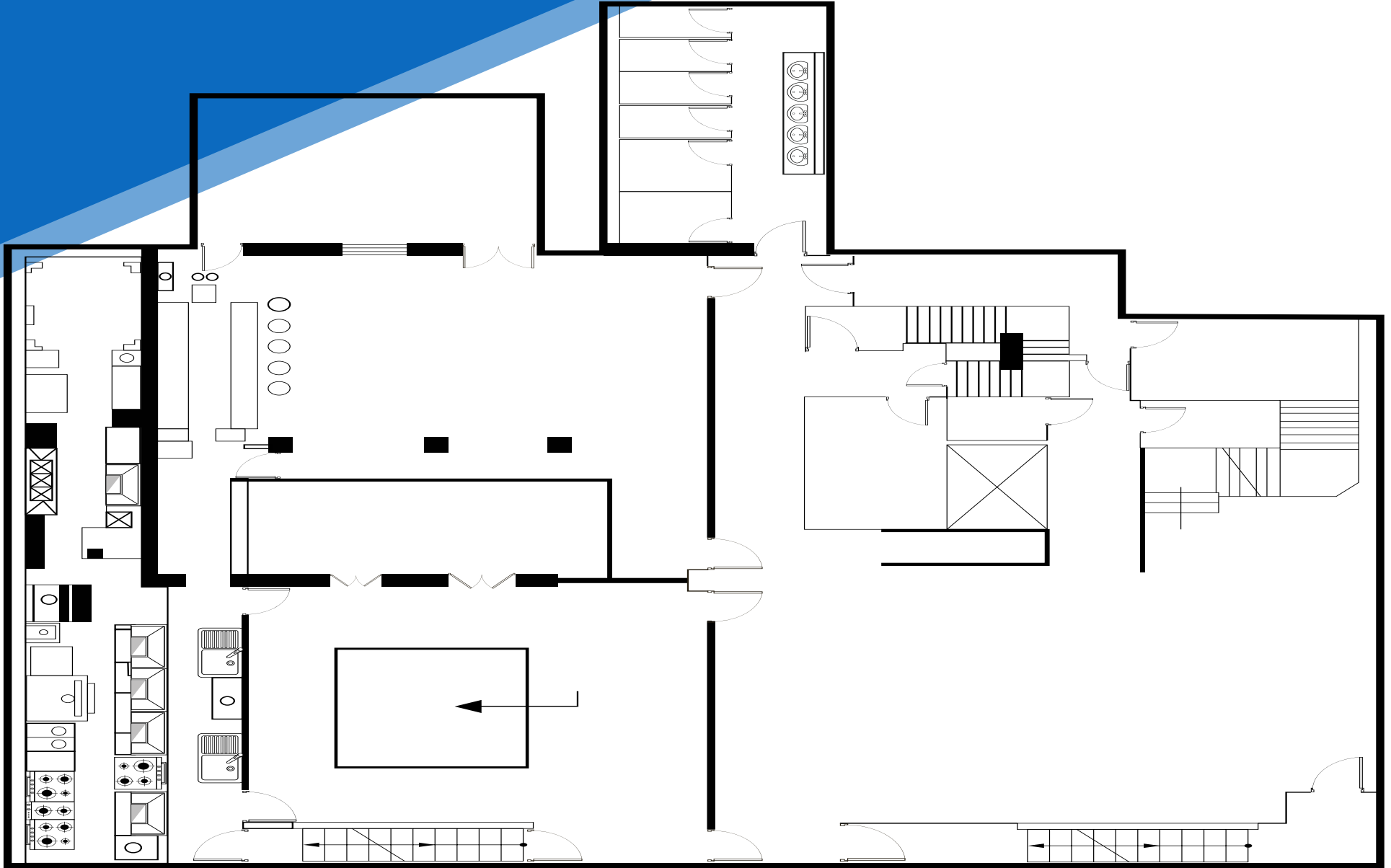
All information supplied is from sources deemed reliable and is furnished subject to errors, omissions, modifications, removal of the listing from sale or lease, and to any listing conditions, including the rates and manner of payment of commissions for particular offerings imposed by Meridian Capital Group. This information may include estimates and projections prepared by Meridian Capital Group with respect to future events, and these future events may or may not actually occur. Such estimates and projections reflect various assumptions concerning anticipated results. While Meridian Capital Group believes these assumptions are reasonable, there can be no assurance that any of these estimates and projections will be correct. Therefore, actual results may vary materially from these estimates and projections. Any square footage dimensions set forth are approximate.

# 645 UNION STREET

GOWANUS, BROOKLYN | Between Third and Fourth Avenues

LOWER LEVEL RESTAURANT FOR LEASE

FLOOR PLAN | LOWER LEVEL



## JAMES FAMULARO

President  
646.658.7373  
jfamularo@meridiancapital.com

## BOBBY ORTENSE

Director  
212.468.5953  
bortense@meridiancapital.com

## MARCELO DEMORAES

Associate  
212.468.5904  
mdemoraes@meridiancapital.com



**MERIDIAN**  
RETAIL LEASING

All information supplied is from sources deemed reliable and is furnished subject to errors, omissions, modifications, removal of the listing from sale or lease, and to any listing conditions, including the rates and manner of payment of commissions for particular offerings imposed by Meridian Capital Group. This information may include estimates and projections prepared by Meridian Capital Group with respect to future events, and these future events may or may not actually occur. Such estimates and projections reflect various assumptions concerning anticipated results. While Meridian Capital Group believes these assumptions are reasonable, there can be no assurance that any of these estimates and projections will be correct. Therefore, actual results may vary materially from these estimates and projections. Any square footage dimensions set forth are approximate.

645 UNION STREET

GOWANUS, BROOKLYN | Between Third and Fourth Avenues

LOWER LEVEL RESTAURANT FOR LEASE

The map shows the layout of the building at 645 Union Street, bounded by Fourth Avenue to the north, Third Avenue to the south, DeGraw Street to the west, and Sackett Street to the east. A blue callout bubble highlights the address '645 UNION STREET' on Union Street. The building is divided into several sections, each containing logos for various tenants. The tenants listed include:

- West of DeGraw Street:** DANCEWAVE, 75 High Performance Building Supply, sa, Cornell Medicine, Kitchen Emporium, unionHOTEL, asons Soy Food, CROSSFIT SOUTH BROOKLYN, AGME Bicycle Co, FRESNIUS KIDNEY CARE.
- Between DeGraw and Sackett Streets:** 2RISE, littlefield, ParkLife, Wild East, KAUFMAN SHOE REPAIR SUPPLIES, INC., goldfish swim school, KICK AXE THROWING, BROOKLYN MUSIC FACTORY, Blackbirds Brooklyn Limited Liability Company.
- Between Sackett and Union Streets:** L TRAIN VINTAGE, IYYUN, Curby Saloon, Just minks, Zentokan Dojo, AIKIDO OF PARK SLOPE, Holiday Inn Express, AN IHG HOTEL, The Dance Studio of Park Slope.
- Between Union and President Streets:** Union Street Pizza, Delilah Salon, 645 UNION STREET (callout), DINOSAUR BAR-B-QUE, TownePlace Suites, PARKSIDE AUTO CARE, FINBACK, halftone, Hilton, Hemo's spot Juice Bar & Cafe Union Street, Union Street Cafe.
- East of President Street:** Root Hill Cafe, Green Ivy, GOWANUS GARDENS BAR+KITCHEN, BLACK CAT WINES, DAIG, STRONG ROPE, textilu arts center, TATILIN WELLN, WENDY STEFANELLI, b'tween | børn, Ill Have Coffee, RUNNER & STONE.

NEIGHBORS

JAMES FAMULARO

President  
646.658.7373  
jfamularo@meridiancapital.com

BOBBY ORTENSE

Director  
212.468.5953  
bortense@meridiancapital.com

MARCELO DEMORAES

Associate  
212.468.5904  
mdemoraes@meridiancapital.com



**MERIDIAN**  
RETAIL LEASING

All information supplied is from sources deemed reliable and is furnished subject to errors, omissions, modifications, removal of the listing from sale or lease, and to any listing conditions, including the rates and manner of payment of commissions for particular offerings imposed by Meridian Capital Group. This information may include estimates and projections prepared by Meridian Capital Group with respect to future events, and these future events may or may not actually occur. Such estimates and projections reflect various assumptions concerning anticipated results. While Meridian Capital Group believes these assumptions are reasonable, there can be no assurance that any of these estimates and projections will be correct. Therefore, actual results may vary materially from these estimates and projections. Any square footage dimensions set forth are approximate.