

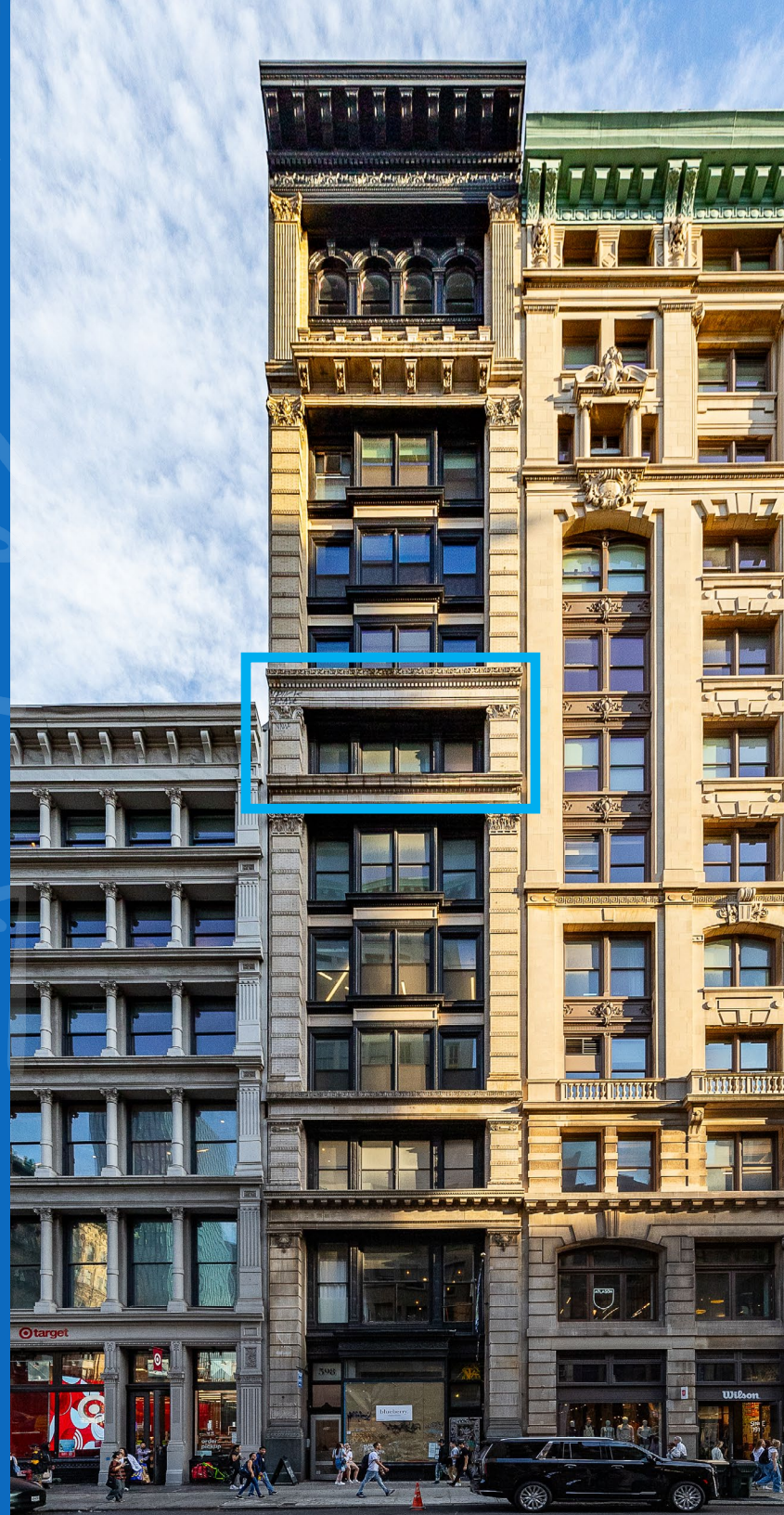


# 598

B R O A D W A Y



**MERIDIAN**  
RETAIL LEASING



# 598

## BROADWAY SOHO, NYC

Between East Houston & Prince Streets

RETAIL/OFFICE FOR LEASE



### APPROXIMATE SIZE

6<sup>th</sup> Floor: 5,500 SF

### ASKING RENT

\$48 PSF

### POSSESSION

Immediate

### TERM

1-5 Years

### COMMENTS

- Previously "Superdry" corporate office
- Column-free layout
- 3 built-out offices and 1 conference room
- Attended lobby

### NEIGHBORS

Adidas • Target • Wilson • The North Face • Kith • KYU • American Eagle • Moncler • BALENCIAGA • Apple • BAPE • Dolce & Gabbana • Louis Vuitton • Miu Miu • Lure Fishbar • Museum of Ice Cream NYC • Equinox • Nike • Emilio's Ballato • Nespresso

### TRANSPORTATION



PROPERTY INFORMATION

**JAMES FAMULARO**

President

**GREG GOLDBERG**

Senior Director  
646.780.4904

[ggoldberg@meridiancapital.com](mailto:ggoldberg@meridiancapital.com)

**JAKE HERSKOWITZ**

Associate  
212.468.5941

[jherskowitz@meridiancapital.com](mailto:jherskowitz@meridiancapital.com)



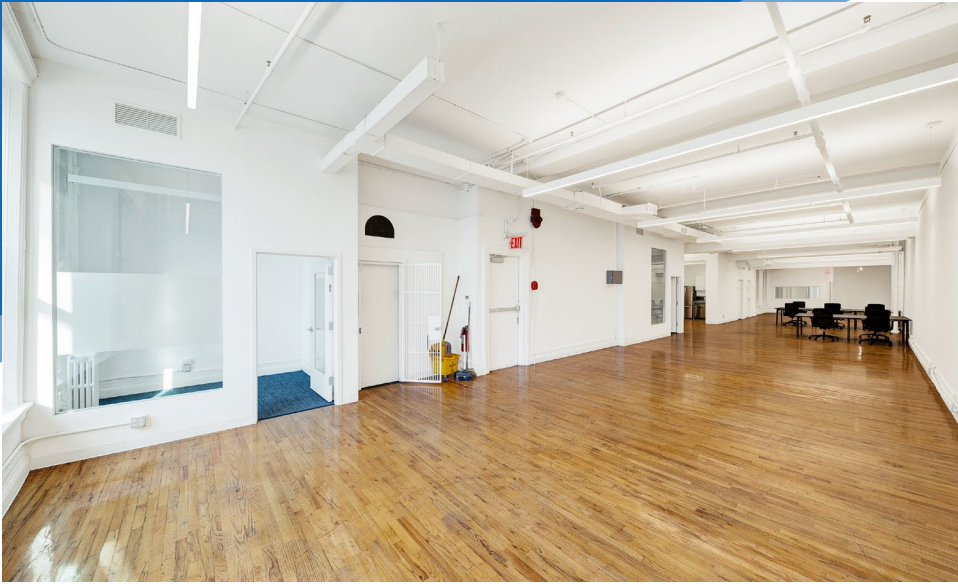
**MERIDIAN**  
RETAIL LEASING

All information supplied is from sources deemed reliable and is furnished subject to errors, omissions, modifications, removal of the listing from sale or lease, and to any listing conditions, including the rates and manner of payment of commissions for particular offerings imposed by Meridian Capital Group. This information may include estimates and projections prepared by Meridian Capital Group with respect to future events, and these future events may or may not actually occur. Such estimates and projections reflect various assumptions concerning anticipated results. While Meridian Capital Group believes these assumptions are reasonable, there can be no assurance that any of these estimates and projections will be correct. Therefore, actual results may vary materially from these estimates and projections. Any square footage dimensions set forth are approximate.

598 BROADWAY

SOHO, NYC | Between East Houston and Prince Streets

RETAIL/OFFICE FOR LEASE



INTERIOR

JAMES FAMULARO  
President

GREG GOLDBERG  
Senior Director  
646.780.4904  
ggoldberg@meridiancapital.com

JAKE HERSKOWITZ  
Associate  
212.468.5941  
jherskowitz@meridiancapital.com



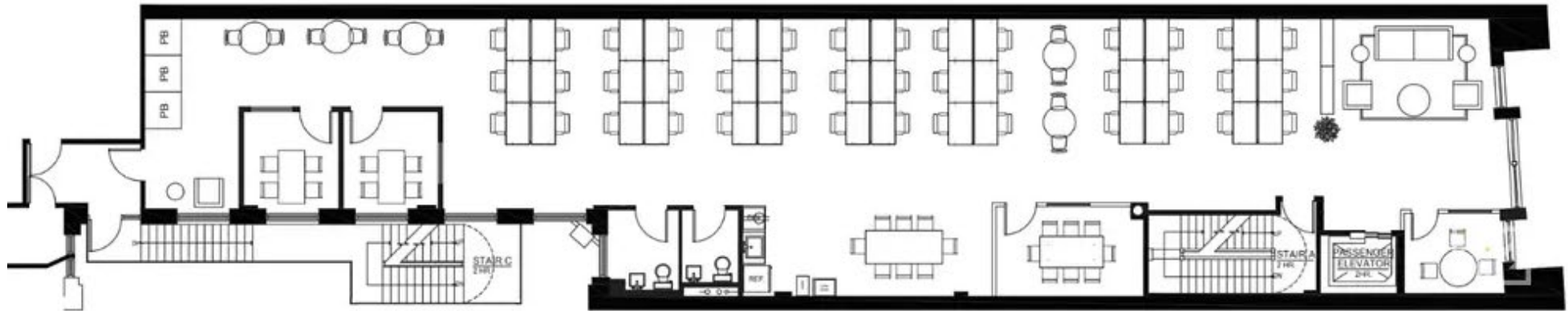
**MERIDIAN**  
RETAIL LEASING

All information supplied is from sources deemed reliable and is furnished subject to errors, omissions, modifications, removal of the listing from sale or lease, and to any listing conditions, including the rates and manner of payment of commissions for particular offerings imposed by Meridian Capital Group. This information may include estimates and projections prepared by Meridian Capital Group with respect to future events, and these future events may or may not actually occur. Such estimates and projections reflect various assumptions concerning anticipated results. While Meridian Capital Group believes these assumptions are reasonable, there can be no assurance that any of these estimates and projections will be correct. Therefore, actual results may vary materially from these estimates and projections. Any square footage dimensions set forth are approximate.

598 BROADWAY

SOHO, NYC | Between East Houston and Prince Streets

RETAIL/OFFICE FOR LEASE



FLOOR PLAN

JAMES FAMULARO  
President

GREG GOLDBERG  
Senior Director  
646.780.4904  
ggoldberg@meridiancapital.com

JAKE HERSKOWITZ  
Associate  
212.468.5941  
jherskowitz@meridiancapital.com



**MERIDIAN**  
RETAIL LEASING

All information supplied is from sources deemed reliable and is furnished subject to errors, omissions, modifications, removal of the listing from sale or lease, and to any listing conditions, including the rates and manner of payment of commissions for particular offerings imposed by Meridian Capital Group. This information may include estimates and projections prepared by Meridian Capital Group with respect to future events, and these future events may or may not actually occur. Such estimates and projections reflect various assumptions concerning anticipated results. While Meridian Capital Group believes these assumptions are reasonable, there can be no assurance that any of these estimates and projections will be correct. Therefore, actual results may vary materially from these estimates and projections. Any square footage dimensions set forth are approximate.

598 BROADWAY

SOHO, NYC | Between East Houston and Prince Streets

RETAIL/OFFICE FOR LEASE



Situated at the **GATEWAY TO SOHO — 598 BROADWAY** is ideally positioned in front of **millions of shoppers** entering the **bustling retail corridor** from Houston Street at the Broadway-Lafayette subway station.



YOUR NEIGHBORHOOD



**13M/39K**  
Annual and average daily ridership Broadway-Lafayette Station



**101K**  
Estimated daytime population within 1/2 mile



**\$167K**  
Average household income within 1/4 mile



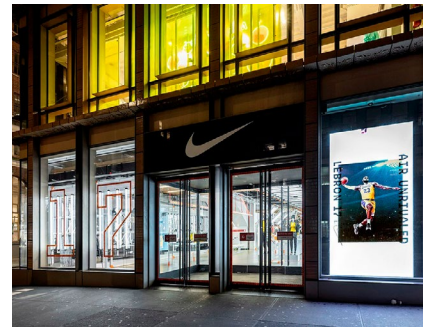
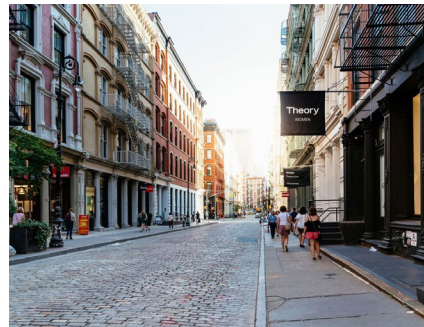
**25K**  
Area residents



**25.5K**  
Total employees within 1/4 mile



**\$4.5M**  
Average household value



**JAMES FAMULARO**  
President

**GREG GOLDBERG**  
Senior Director  
646.780.4904  
ggoldberg@meridiancapital.com

**JAKE HERSKOWITZ**  
Associate  
212.468.5941  
jherskowitz@meridiancapital.com



**MERIDIAN**  
RETAIL LEASING

All information supplied is from sources deemed reliable and is furnished subject to errors, omissions, modifications, removal of the listing from sale or lease, and to any listing conditions, including the rates and manner of payment of commissions for particular offerings imposed by Meridian Capital Group. This information may include estimates and projections prepared by Meridian Capital Group with respect to future events, and these future events may or may not actually occur. Such estimates and projections reflect various assumptions concerning anticipated results. While Meridian Capital Group believes these assumptions are reasonable, there can be no assurance that any of these estimates and projections will be correct. Therefore, actual results may vary materially from these estimates and projections. Any square footage dimensions set forth are approximate.