

# 355

**BOWERY**  
NOHO, NYC

Between East 3<sup>rd</sup> & 4<sup>th</sup> Streets

RESTAURANT/BAR FOR LEASE



#### APPROXIMATE SIZE

Ground Floor: 1,600 SF  
Basement: 1,600 SF  
Sub-Cellar: 600 SF

#### RENT

\$10,300/Month

#### POSSESSION

Immediate

#### TERM

Ending April 30<sup>th</sup>, 2033

#### KEY-MONEY

Upon-Request

#### COMMENTS

- Turn-key restaurant/bar located on Bowery's central F&B corridor
- Currently "Short Stories"
- Active 2AM liquor license
- Lease assignment/asset purchase opportunity ending April 2033

#### NEIGHBORS

Phebe's • The Wren • Atelier Jolie • Vic's • Il Buco  
• Jac's on Bond • Gemma • Crunch Fitness • The Bowery Hotel • The Nines • Zero Bond • Bond St  
• NYU • Equinox Bond Street • Ogawa Sushi

#### TRANSPORTATION



#### JAMES FAMULARO

President

#### GARRETT KELLY

Director  
212.468.5939  
gkelly@meridiancapital.com

#### BOBBY ORTENSE

Associate  
212.468.5953  
bortense@meridiancapital.com



**MERIDIAN**  
RETAIL LEASING

All information supplied is from sources deemed reliable and is furnished subject to errors, omissions, modifications, removal of the listing from sale or lease, and to any listing conditions, including the rates and manner of payment of commissions for particular offerings imposed by Meridian Capital Group. This information may include estimates and projections prepared by Meridian Capital Group with respect to future events, and these future events may or may not actually occur. Such estimates and projections reflect various assumptions concerning anticipated results. While Meridian Capital Group believes these assumptions are reasonable, there can be no assurance that any of these estimates and projections will be correct. Therefore, actual results may vary materially from these estimates and projections. Any square footage dimensions set forth are approximate.

# 355 BOWERY

NOHO, NYC | Between East 3<sup>rd</sup> and 4<sup>th</sup> Streets

## RESTAURANT/BAR FOR LEASE



INTERIOR | GROUND FLOOR

**JAMES FAMULARO**  
President

**GARRETT KELLY**  
Director  
212.468.5939  
gkelly@meridiancapital.com

**BOBBY ORTENSE**  
Associate  
212.468.5953  
bortense@meridiancapital.com



**MERIDIAN**  
RETAIL LEASING

All information supplied is from sources deemed reliable and is furnished subject to errors, omissions, modifications, removal of the listing from sale or lease, and to any listing conditions, including the rates and manner of payment of commissions for particular offerings imposed by Meridian Capital Group. This information may include estimates and projections prepared by Meridian Capital Group with respect to future events, and these future events may or may not actually occur. Such estimates and projections reflect various assumptions concerning anticipated results. While Meridian Capital Group believes these assumptions are reasonable, there can be no assurance that any of these estimates and projections will be correct. Therefore, actual results may vary materially from these estimates and projections. Any square footage dimensions set forth are approximate.

# 355 BOWERY

NOHO, NYC | Between East 3<sup>rd</sup> and 4<sup>th</sup> Streets

RESTAURANT/BAR FOR LEASE



INTERIOR | LOWER LEVEL

**JAMES FAMULARO**  
President

**GARRETT KELLY**  
Director  
212.468.5939  
gkelly@meridiancapital.com

**BOBBY ORTENSE**  
Associate  
212.468.5953  
bortense@meridiancapital.com



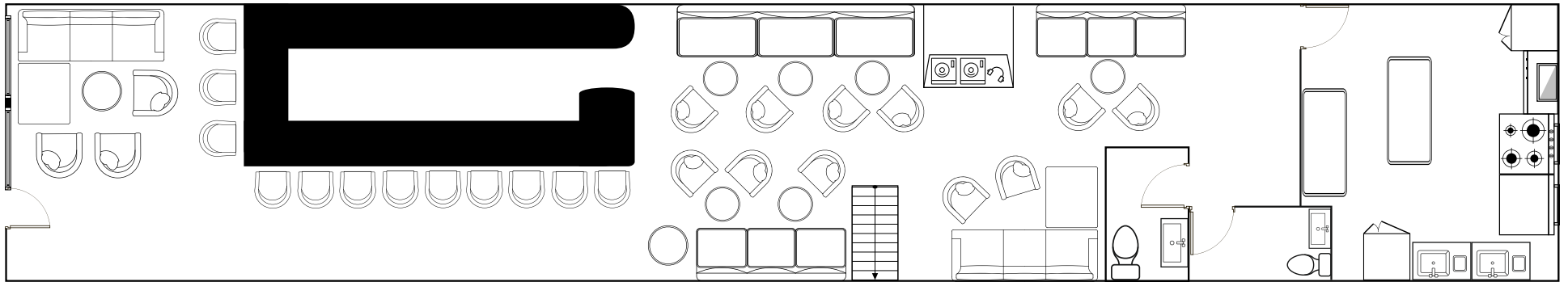
**MERIDIAN**  
RETAIL LEASING

All information supplied is from sources deemed reliable and is furnished subject to errors, omissions, modifications, removal of the listing from sale or lease, and to any listing conditions, including the rates and manner of payment of commissions for particular offerings imposed by Meridian Capital Group. This information may include estimates and projections prepared by Meridian Capital Group with respect to future events, and these future events may or may not actually occur. Such estimates and projections reflect various assumptions concerning anticipated results. While Meridian Capital Group believes these assumptions are reasonable, there can be no assurance that any of these estimates and projections will be correct. Therefore, actual results may vary materially from these estimates and projections. Any square footage dimensions set forth are approximate.

# 355 BOWERY

NOHO, NYC | Between East 3<sup>rd</sup> and 4<sup>th</sup> Streets

RESTAURANT/BAR FOR LEASE



FLOOR PLAN

**JAMES FAMULARO**  
President

**GARRETT KELLY**  
Director  
212.468.5939  
gkelly@meridiancapital.com

**BOBBY ORTENSE**  
Associate  
212.468.5953  
bortense@meridiancapital.com



**MERIDIAN**  
RETAIL LEASING

All information supplied is from sources deemed reliable and is furnished subject to errors, omissions, modifications, removal of the listing from sale or lease, and to any listing conditions, including the rates and manner of payment of commissions for particular offerings imposed by Meridian Capital Group. This information may include estimates and projections prepared by Meridian Capital Group with respect to future events, and these future events may or may not actually occur. Such estimates and projections reflect various assumptions concerning anticipated results. While Meridian Capital Group believes these assumptions are reasonable, there can be no assurance that any of these estimates and projections will be correct. Therefore, actual results may vary materially from these estimates and projections. Any square footage dimensions set forth are approximate.

# 355 BOWERY

NOHO, NYC | Between East 3<sup>rd</sup> and 4<sup>th</sup> Streets

## RESTAURANT/BAR FOR LEASE

The map displays the following businesses and locations:

- Streets:** BROADWAY, LAFAYETTE STREET, THIRD AVENUE, W 4TH STREET, 3RD STREET, GREAT JONES STREET, E 7TH STREET, E 6TH STREET, E 5TH STREET, E 4TH STREET, E 3RD STREET.
- Businesses:** sweetgreen, Cane's, Lids, juice GENERATION, The Donut Pub, Astor Place Health stylists, DIVADANCE, The Writers Room, Momentum PILATES, T-Mobile, ClearMD, NYU DENTISTRY, McDonald's, Foot Locker, HYPECLUB, RUMBLE, La COLOMBE COFFEE ROASTERS, blink SOULCYCLE, BondVet, LOOHS, HEYDAY, Laced Up, Lafayette, Mile High Run Club, OGAWA, JOLIE, Vic's, ALIMENTARI IL BUCO & VINERIA, ATELIER JOLIE, THE WREN, JACS on bond, CASA BOND, YOSHINO, GEMMA, The Bowery Hotel, PHEBE'S, Blondify, ROD RODGERS FUTURE COMPANY, LA MAMA, Club 82, BAR VEI, WHISKEY TOWN, KOI COFFEE, THREE JEWELS, sweetgreen, PICO, MESORLEY'S OLD ALE HOUSE, Streecha, BLANK STREET, Standir, THE COOPER UNION, Le Petit Parisien, Apple Bank, San Marga, THAI 4 thought, THEUKRAINIANMUSEUM, LIBRAE, The Standard, The Scrotcher, CORBET & CONLEY, DUO, COFFEE PROJECT NEW YORK, COOPER CRAFT & COCKTAILS, WOW CAFÉ THEATRE, S.K. Deli M, VIN CUC, FACTORY TAMAL, Toms Juice, KGB Bar, Via Della Pace, DESI STC, Piccola Strada, COMEDY CLUB, DOKODEMO JAPANESE GRILL, 90 CENT FRESH, PHEBE'S, Blondify, ROD RODGERS FUTURE COMPANY, LA MAMA, Club 82, BAR VEI, WHISKEY TOWN, KOI COFFEE, THREE JEWELS, sweetgreen, PICO, MESORLEY'S OLD ALE HOUSE, Streecha, BLANK STREET, Standir, THE COOPER UNION, Le Petit Parisien, Apple Bank, San Marga, THAI 4 thought, THEUKRAINIANMUSEUM, LIBRAE, The Standard, The Scrotcher, CORBET & CONLEY, DUO, COFFEE PROJECT NEW YORK, COOPER CRAFT & COCKTAILS, WOW CAFÉ THEATRE, S.K. Deli M, VIN CUC, FACTORY TAMAL, Toms Juice, KGB Bar, Via Della Pace, DESI STC, Piccola Strada, COMEDY CLUB, DOKODEMO JAPANESE GRILL, 90 CENT FRESH.



**JAMES FAMULARO**  
President

**GARRETT KELLY**  
Director  
212.468.5939  
gkelly@meridiancapital.com

**BOBBY ORTENSE**  
Associate  
212.468.5953  
bortense@meridiancapital.com



**MERIDIAN**  
RETAIL LEASING

All information supplied is from sources deemed reliable and is furnished subject to errors, omissions, modifications, removal of the listing from sale or lease, and to any listing conditions, including the rates and manner of payment of commissions for particular offerings imposed by Meridian Capital Group. This information may include estimates and projections prepared by Meridian Capital Group with respect to future events, and these future events may or may not actually occur. Such estimates and projections reflect various assumptions concerning anticipated results. While Meridian Capital Group believes these assumptions are reasonable, there can be no assurance that any of these estimates and projections will be correct. Therefore, actual results may vary materially from these estimates and projections. Any square footage dimensions set forth are approximate.