

282

LENOX AVENUE
HARLEM, NYC

Between West 124th & 125th Streets

RETAIL FOR LEASE



APPROXIMATE SIZE

1,500 SF + Basement

ASKING RENT

\$14,000/Month

POSSESSION

Immediate

TERM

5-15 Years

FRONTAGE

20 FT

COMMENTS

- Previously "Caribbean Wine Bar" with a trendy brick interior
- 2 private bathrooms in place
- Interior basement access and sidewalk hatch
- Landlord open to providing vent and gas depending on tenant
- Restaurant/bar infrastructure in place
- Located off the bustling corner of 124th Street

NEIGHBORS

Harlem Shake • Caribbean Starr • Crab Du Jour • Chipotle • Golden Krust • European Wax Center • Whole Foods • Raymour & Flanigan • Burlington

TRANSPORTATION



JAMES FAMULARO

President

DANE HARLOWE

Director

212.468.5966

dharlowe@meridiancapital.com

NOAM AZIZ

Associate

212.468.5984

naziz@meridiancapital.com

CARSON SHAHRABANI

Associate

212.468.5927

cshahrabani@meridiancapital.com



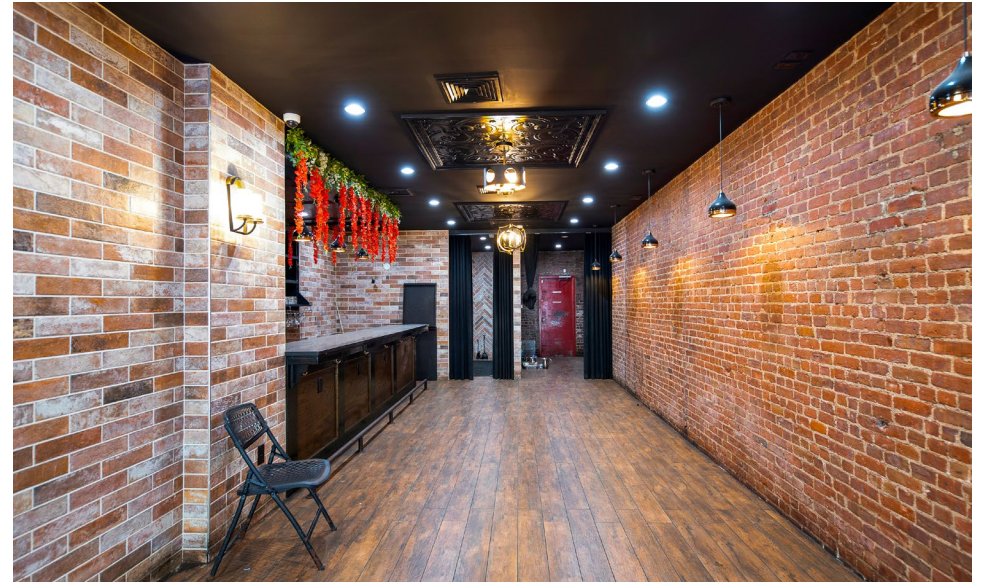
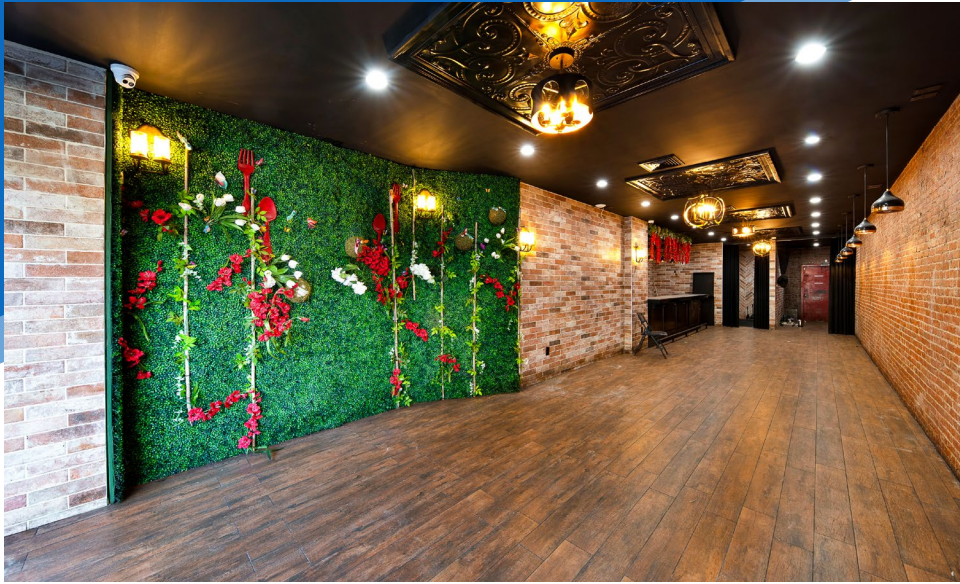
MERIDIAN
RETAIL LEASING

All information supplied is from sources deemed reliable and is furnished subject to errors, omissions, modifications, removal of the listing from sale or lease, and to any listing conditions, including the rates and manner of payment of commissions for particular offerings imposed by Meridian Capital Group. This information may include estimates and projections prepared by Meridian Capital Group with respect to future events, and these future events may or may not actually occur. Such estimates and projections reflect various assumptions concerning anticipated results. While Meridian Capital Group believes these assumptions are reasonable, there can be no assurance that any of these estimates and projections will be correct. Therefore, actual results may vary materially from these estimates and projections. Any square footage dimensions set forth are approximate.

282 LENOX AVENUE

HARLEM, NYC | Between West 124th and 125th Streets

RETAIL FOR LEASE



INTERIOR

JAMES FAMULARO
President

DANE HARLOWE
Director
212.468.5966
dharlowe@meridiancapital.com

NOAM AZIZ
Associate
212.468.5984
naziz@meridiancapital.com

CARSON SHAHRABANI
Associate
212.468.5927
cshahrabani@meridiancapital.com



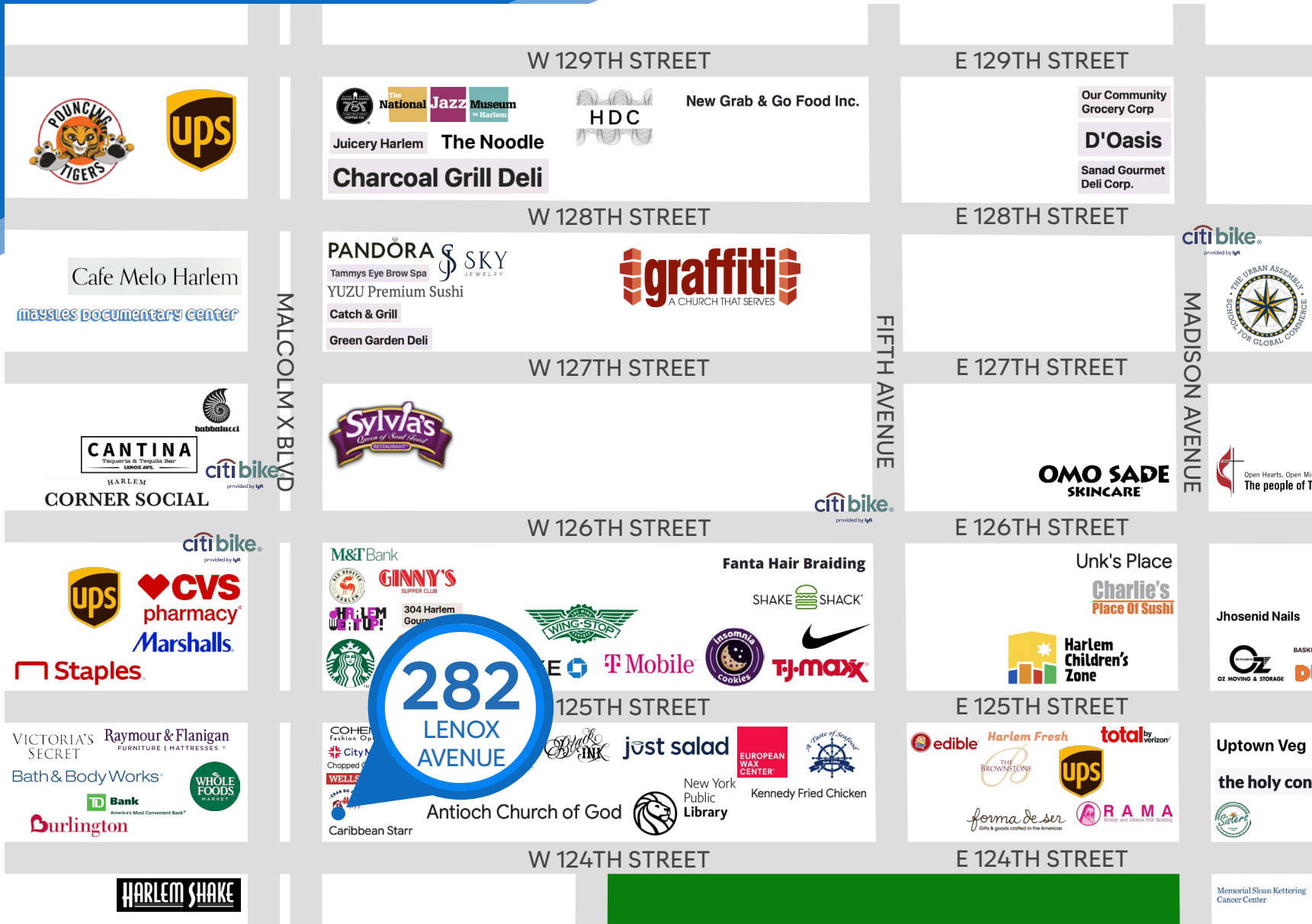
MERIDIAN
RETAIL LEASING

All information supplied is from sources deemed reliable and is furnished subject to errors, omissions, modifications, removal of the listing from sale or lease, and to any listing conditions, including the rates and manner of payment of commissions for particular offerings imposed by Meridian Capital Group. This information may include estimates and projections prepared by Meridian Capital Group with respect to future events, and these future events may or may not actually occur. Such estimates and projections reflect various assumptions concerning anticipated results. While Meridian Capital Group believes these assumptions are reasonable, there can be no assurance that any of these estimates and projections will be correct. Therefore, actual results may vary materially from these estimates and projections. Any square footage dimensions set forth are approximate.

282 LENOX AVENUE

HARLEM, NYC | Between West 124th and 125th Streets

RETAIL FOR LEASE



NEIGHBORS

JAMES FAMULARO
President

DANE HARLOWE
Director
212.468.5966
dharlowe@meridiancapital.com

NOAM AZIZ
Associate
212.468.5984
naziz@meridiancapital.com

CARSON SHAHRABANI
Associate
212.468.5927
cshahrabani@meridiancapital.com



MERIDIAN
RETAIL LEASING

All information supplied is from sources deemed reliable and is furnished subject to errors, omissions, modifications, removal of the listing from sale or lease, and to any listing conditions, including the rates and manner of payment of commissions for particular offerings imposed by Meridian Capital Group. This information may include estimates and projections prepared by Meridian Capital Group with respect to future events, and these future events may or may not actually occur. Such estimates and projections reflect various assumptions concerning anticipated results. While Meridian Capital Group believes these assumptions are reasonable, there can be no assurance that any of these estimates and projections will be correct. Therefore, actual results may vary materially from these estimates and projections. Any square footage dimensions set forth are approximate.