

28

WATER STREET FINANCIAL DISTRICT, NYC

Between Broad Street & Coenties Slip

RESTAURANT FOR LEASE

APPROXIMATE SIZE

Ground Floor: 800 SF
Basement: 800 SF

ASKING RENT

Upon Request

POSSESSION

Arranged

TERM

Negotiable

FRONTAGE

18 FT

COMMENTS

- Fully built-out QSR with vent in place
- Private bathroom
- Walk-in boxes in the basement
- Landlord will deliver gas to the premises
- Brand-new 800-unit residential building across the street
- Nestled between Fraunces Tavern and Dead Rabbit, Financial District's most iconic bars
- No key-money

NEIGHBORS

The Dead Rabbit • Fraunces Tavern • 3 Times
• Sweetgreen • Starbucks • Springbone
Kitchen • Insomnia Cookies • Potbelly • The
White Horse Tavern • Stone Street Tavern

TRANSPORTATION

2 3 4 5 A C E J Z



JAMES FAMULARO
President

NOAM AZIZ
Associate
212.468.5984
naziz@meridiancapital.com

CARSON SHAHRABANI
Associate
212.468.5927
cshahrabani@meridiancapital.com



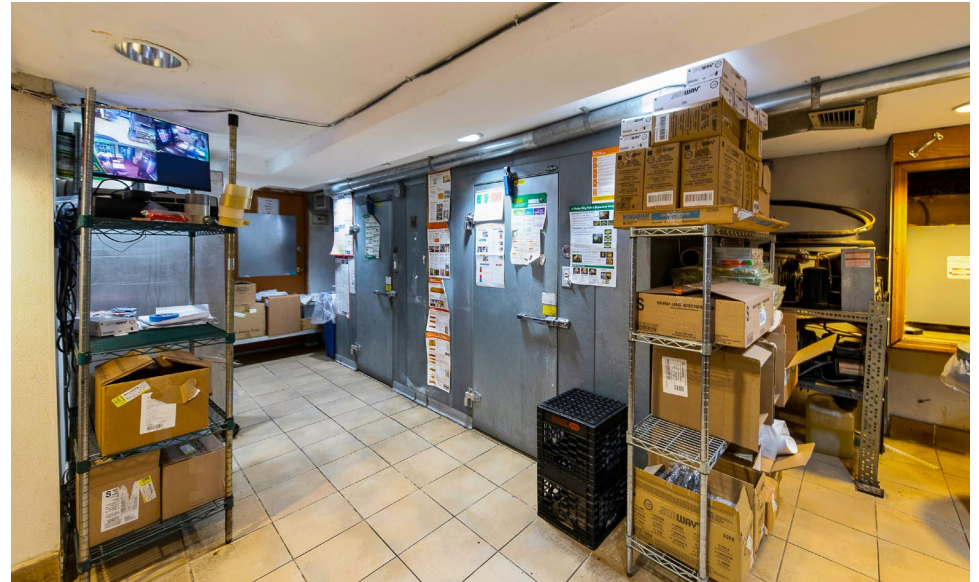
MERIDIAN
RETAIL LEASING

All information supplied is from sources deemed reliable and is furnished subject to errors, omissions, modifications, removal of the listing from sale or lease, and to any listing conditions, including the rates and manner of payment of commissions for particular offerings imposed by Meridian Capital Group. This information may include estimates and projections prepared by Meridian Capital Group with respect to future events, and these future events may or may not actually occur. Such estimates and projections reflect various assumptions concerning anticipated results. While Meridian Capital Group believes these assumptions are reasonable, there can be no assurance that any of these estimates and projections will be correct. Therefore, actual results may vary materially from these estimates and projections. Any square footage dimensions set forth are approximate.

28 WATER STREET

FINANCIAL DISTRICT, NYC | Between Broad Street and Coenties Slip

RESTAURANT FOR LEASE



INTERIOR

JAMES FAMULARO
President

NOAM AZIZ
Associate
212.468.5984
naziz@meridiancapital.com

CARSON SHAHRABANI
Associate
212.468.5927
cshahrabani@meridiancapital.com



MERIDIAN
RETAIL LEASING

All information supplied is from sources deemed reliable and is furnished subject to errors, omissions, modifications, removal of the listing from sale or lease, and to any listing conditions, including the rates and manner of payment of commissions for particular offerings imposed by Meridian Capital Group. This information may include estimates and projections prepared by Meridian Capital Group with respect to future events, and these future events may or may not actually occur. Such estimates and projections reflect various assumptions concerning anticipated results. While Meridian Capital Group believes these assumptions are reasonable, there can be no assurance that any of these estimates and projections will be correct. Therefore, actual results may vary materially from these estimates and projections. Any square footage dimensions set forth are approximate.

28 WATER STREET

FINANCIAL DISTRICT, NYC | Between Broad Street and Coenties Slip

RESTAURANT FOR LEASE



NEIGHBORS

JAMES FAMULARO
President

NOAM AZIZ
Associate
212.468.5984
naziz@meridiancapital.com

CARSON SHAHRABANI
Associate
212.468.5927
cshahrabani@meridiancapital.com



MERIDIAN
RETAIL LEASING

All information supplied is from sources deemed reliable and is furnished subject to errors, omissions, modifications, removal of the listing from sale or lease, and to any listing conditions, including the rates and manner of payment of commissions for particular offerings imposed by Meridian Capital Group. This information may include estimates and projections prepared by Meridian Capital Group with respect to future events, and these future events may or may not actually occur. Such estimates and projections reflect various assumptions concerning anticipated results. While Meridian Capital Group believes these assumptions are reasonable, there can be no assurance that any of these estimates and projections will be correct. Therefore, actual results may vary materially from these estimates and projections. Any square footage dimensions set forth are approximate.