

# 250

**BROOME STREET**  
LOWER EAST SIDE, NYC

Between Orchard & Ludlow Streets

RETAIL FOR LEASE



#### APPROXIMATE SIZE

Ground Floor: 600 SF  
Basement: 600 SF

#### ASKING RENT

~~\$9,500/Month~~ Reduced  
\$9,000/Month

#### POSSESSION

Immediate

#### TERM

5+ Years

#### FRONTAGE

13 FT

#### COMMENTS

- Clean retail space on thriving Lower East Side block
- Perfect for any boutique retail operator
- Large signage opportunity
- Landlord to deliver space in clean white-box condition

#### NEIGHBORS

Somm Time • Mila's • Hotel Chantelle • Dudley's  
• Sunday to Sunday • Sticky Rice • The DL •  
Attaboy • Zest Ramen • Barrio Chino • Grey Lady

#### TRANSPORTATION

B D F M J Z

B39 M14 M9

#### JAMES FAMULARO

President

#### GARRETT KELLY

Director  
212.468.5939  
gkelly@meridiancapital.com

#### NOAM AZIZ

Associate  
212.468.5984  
naziz@meridiancapital.com



**MERIDIAN**  
RETAIL LEASING

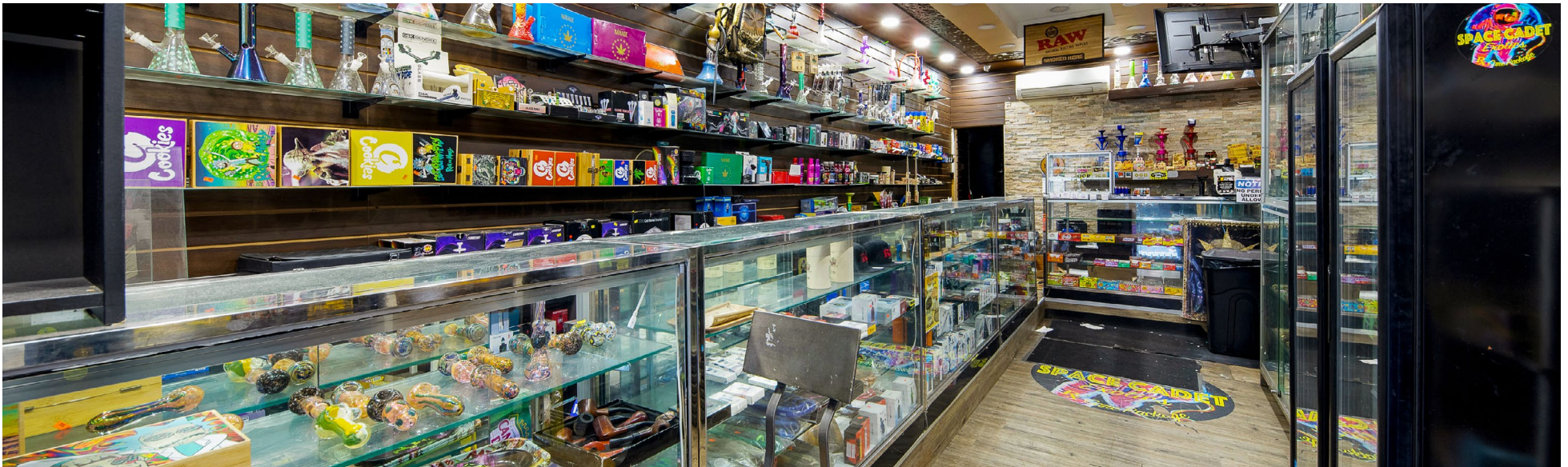
All information supplied is from sources deemed reliable and is furnished subject to errors, omissions, modifications, removal of the listing from sale or lease, and to any listing conditions, including the rates and manner of payment of commissions for particular offerings imposed by Meridian Capital Group. This information may include estimates and projections prepared by Meridian Capital Group with respect to future events, and these future events may or may not actually occur. Such estimates and projections reflect various assumptions concerning anticipated results. While Meridian Capital Group believes these assumptions are reasonable, there can be no assurance that any of these estimates and projections will be correct. Therefore, actual results may vary materially from these estimates and projections. Any square footage dimensions set forth are approximate.



# 250 BROOME STREET

LOWER EAST SIDE, NYC | Between Orchard and Ludlow Streets

RETAIL FOR LEASE



INTERIOR

**JAMES FAMULARO**  
President

**GARRETT KELLY**  
Director  
212.468.5939  
gkelly@meridiancapital.com

**NOAM AZIZ**  
Associate  
212.468.5984  
naziz@meridiancapital.com



**MERIDIAN**  
RETAIL LEASING

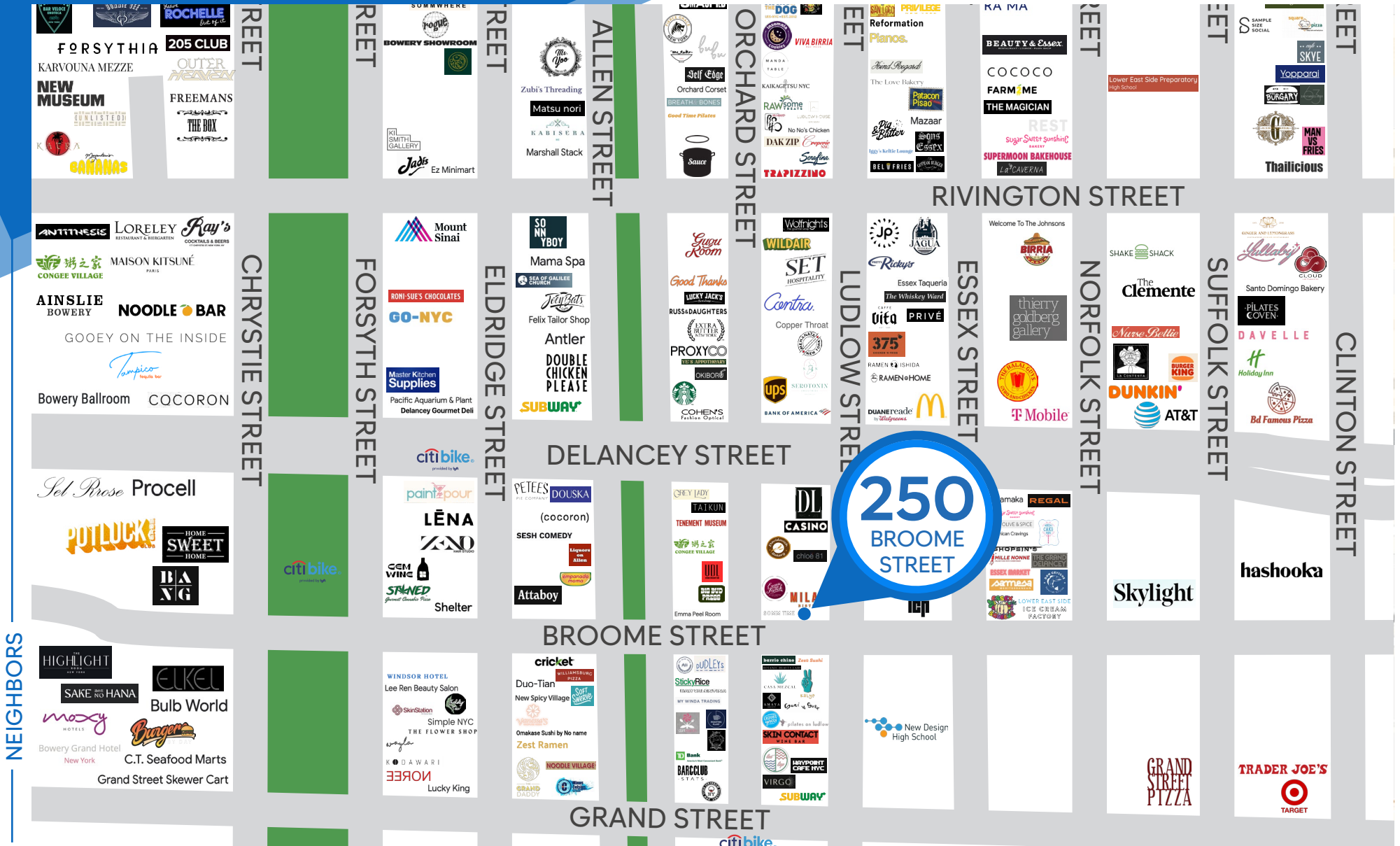
All information supplied is from sources deemed reliable and is furnished subject to errors, omissions, modifications, removal of the listing from sale or lease, and to any listing conditions, including the rates and manner of payment of commissions for particular offerings imposed by Meridian Capital Group. This information may include estimates and projections prepared by Meridian Capital Group with respect to future events, and these future events may or may not actually occur. Such estimates and projections reflect various assumptions concerning anticipated results. While Meridian Capital Group believes these assumptions are reasonable, there can be no assurance that any of these estimates and projections will be correct. Therefore, actual results may vary materially from these estimates and projections. Any square footage dimensions set forth are approximate.



# 250 BROOME STREET

LOWER EAST SIDE, NYC | Between Orchard and Ludlow Streets

RETAIL FOR LEASE



NEIGHBORS

**JAMES FAMULARO**  
President

**GARRETT KELLY**  
Director  
212.468.5939  
gkelly@meridiancapital.com

**NOAM AZIZ**  
Associate  
212.468.5984  
naziz@meridiancapital.com



**MERIDIAN**  
RETAIL LEASING

All information supplied is from sources deemed reliable and is furnished subject to errors, omissions, modifications, removal of the listing from sale or lease, and to any listing conditions, including the rates and manner of payment of commissions for particular offerings imposed by Meridian Capital Group. This information may include estimates and projections prepared by Meridian Capital Group with respect to future events, and these future events may or may not actually occur. Such estimates and projections reflect various assumptions concerning anticipated results. While Meridian Capital Group believes these assumptions are reasonable, there can be no assurance that any of these estimates and projections will be correct. Therefore, actual results may vary materially from these estimates and projections. Any square footage dimensions set forth are approximate.