

248

MOTT STREET

NOLITA, NYC

Between East Houston & Prince Streets

RETAIL FOR LEASE

APPROXIMATE SIZE

Ground Floor: 450 SF
Basement: 300 SF

ASKING RENT

\$9,495/Month

POSSESSION

Immediate

TERM

Negotiable

FRONTAGE

10 FT

COMMENTS

- HVAC in place
- Space is in white-box condition
- Prime Nolita location with heavy foot traffic

NEIGHBORS

Milk Bar • Emilio's Ballato • American Vintage •
Torrise • Equinox • Whole Foods • Sant Ambroeus •
Solidcore • La Pecora Bianca • Studs • Rubirosa

TRANSPORTATION

6 B D F M N Q R



PROPERTY INFORMATION

JAMES FAMULARO

President

BEN BIBERAJ

Senior Director

703.434.1461

bbiberaj@meridiancapital.com

ELLIOT WYODA

Associate

212.468.5968

ewyoda@meridiancapital.com

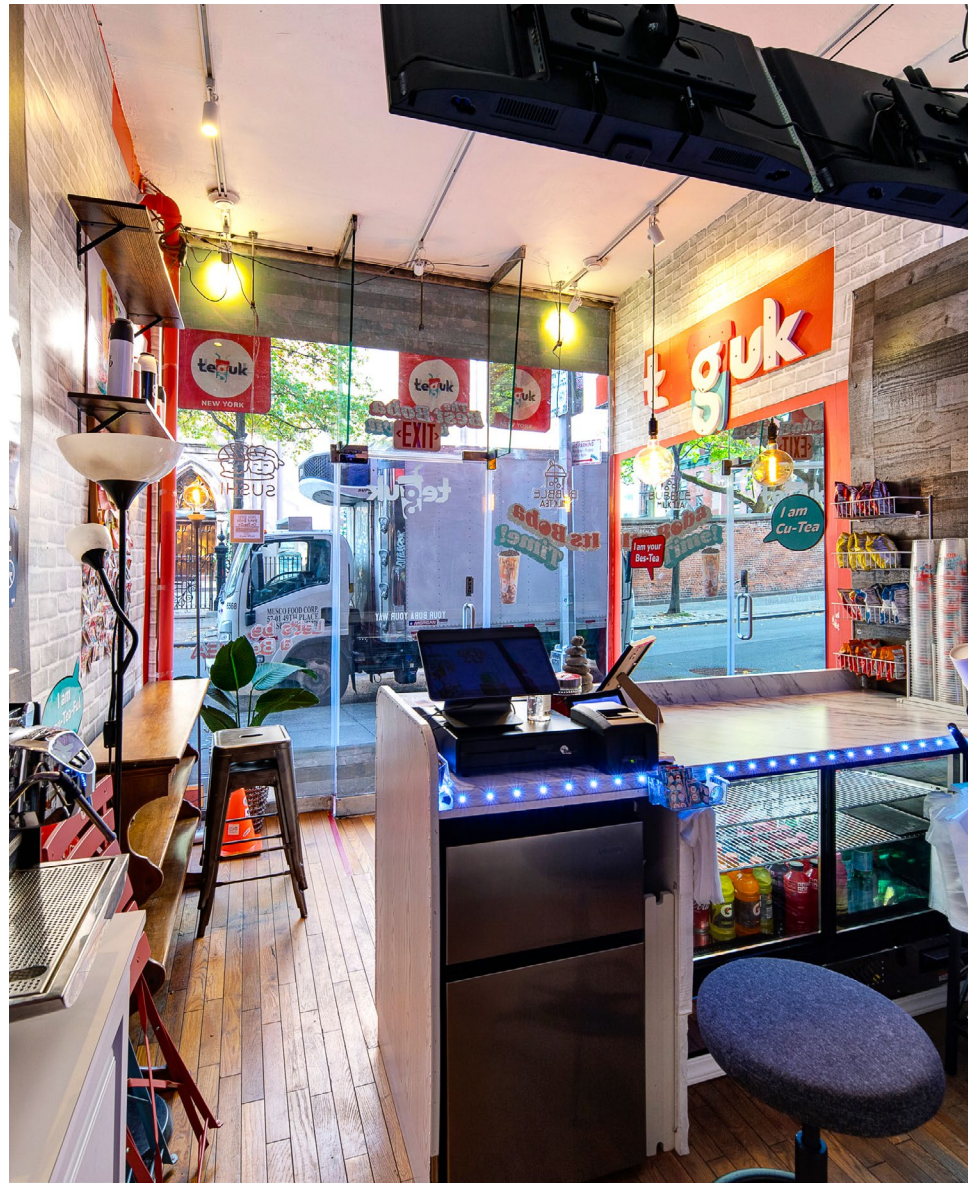
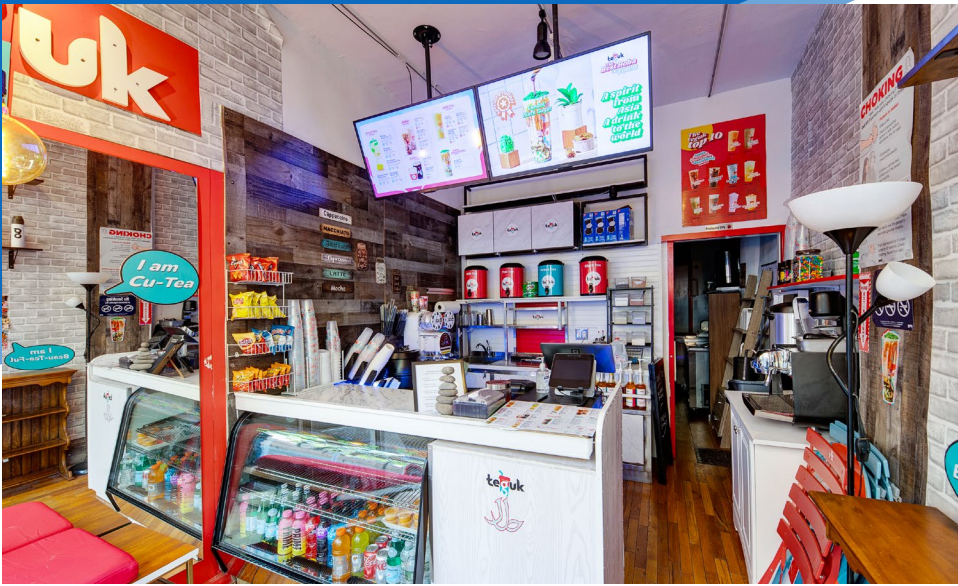


All information supplied is from sources deemed reliable and is furnished subject to errors, omissions, modifications, removal of the listing from sale or lease, and to any listing conditions, including the rates and manner of payment of commissions for particular offerings imposed by Meridian Capital Group. This information may include estimates and projections prepared by Meridian Capital Group with respect to future events, and these future events may or may not actually occur. Such estimates and projections reflect various assumptions concerning anticipated results. While Meridian Capital Group believes these assumptions are reasonable, there can be no assurance that any of these estimates and projections will be correct. Therefore, actual results may vary materially from these estimates and projections. Any square footage dimensions set forth are approximate.

248 MOTT STREET

NOLITA, NYC | Between East Houston and Prince Streets

RETAIL FOR LEASE



INTERIOR

JAMES FAMULARO
President

BEN BIBERAJ
Senior Director
703.434.1461
bbiberaj@meridiancapital.com

ELLIOT WYODA
Associate
212.468.5968
ewyoda@meridiancapital.com



All information supplied is from sources deemed reliable and is furnished subject to errors, omissions, modifications, removal of the listing from sale or lease, and to any listing conditions, including the rates and manner of payment of commissions for particular offerings imposed by Meridian Capital Group. This information may include estimates and projections prepared by Meridian Capital Group with respect to future events, and these future events may or may not actually occur. Such estimates and projections reflect various assumptions concerning anticipated results. While Meridian Capital Group believes these assumptions are reasonable, there can be no assurance that any of these estimates and projections will be correct. Therefore, actual results may vary materially from these estimates and projections. Any square footage dimensions set forth are approximate.

248 MOTT STREET

NOLITA, NYC | Between East Houston and Prince Streets

RETAIL FOR LEASE



NEIGHBORS

JAMES FAMULARO
President

BEN BIBERAJ
Senior Director
703.434.1461
bbiberaj@meridiancapital.com

ELLIOT WYODA
Associate
212.468.5968
ewyoda@meridiancapital.com

 **MERIDIAN**
RETAIL LEASING

All information supplied is from sources deemed reliable and is furnished subject to errors, omissions, modifications, removal of the listing from sale or lease, and to any listing conditions, including the rates and manner of payment of commissions for particular offerings imposed by Meridian Capital Group. This information may include estimates and projections prepared by Meridian Capital Group with respect to future events, and these future events may or may not actually occur. Such estimates and projections reflect various assumptions concerning anticipated results. While Meridian Capital Group believes these assumptions are reasonable, there can be no assurance that any of these estimates and projections will be correct. Therefore, actual results may vary materially from these estimates and projections. Any square footage dimensions set forth are approximate.