

238

EAST 60TH STREET
UPPER EAST SIDE, NYC

Between Second & Third Avenues

RETAIL FOR LEASE

APPROXIMATE SIZE

1,400 SF + Basement

ASKING RENT

\$9,350/Month

POSSESSION

Immediate

TERM

5-15 Years

FRONTAGE

15 FT

COMMENTS

- Ability to vent
- Back wall can be removed to open space
- Previously "Tram Convenience"
- In-line with strong co-tenancy
- All uses considered

NEIGHBORS

Bloomingdale's • Anassa Taverna • Patsy's Pizzeria • My Gym • Juice Island • Laderach • Mattress Firm • The Jeffrey • Chipotle • CB2

TRANSPORTATION

4 5 6 N R W



PROPERTY INFORMATION

JAMES FAMULARO

President
646.658.7373
jfamularo@meridiancapital.com

COLE KLEPPINGER

Associate
212.468.5993
ckleppinger@meridiancapital.com



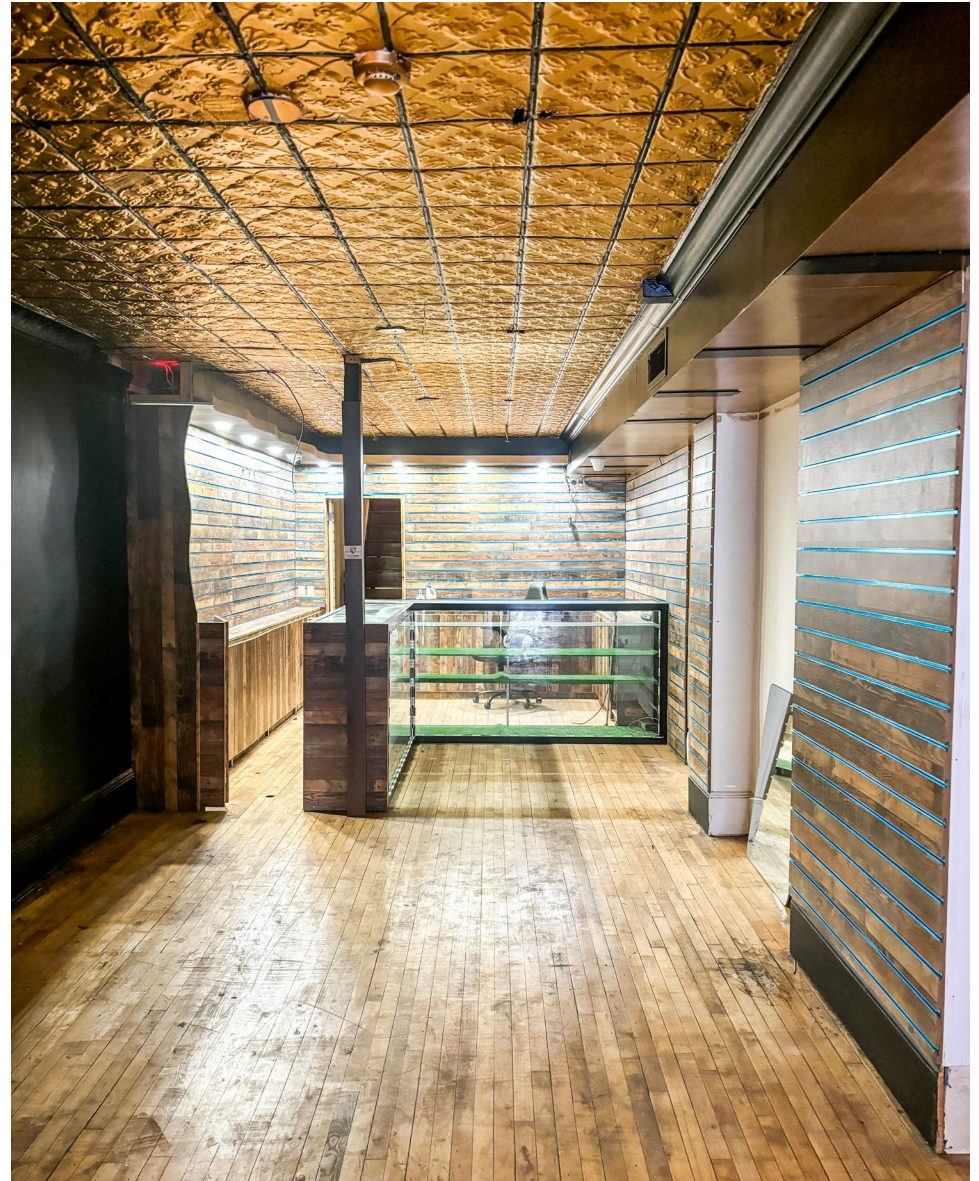
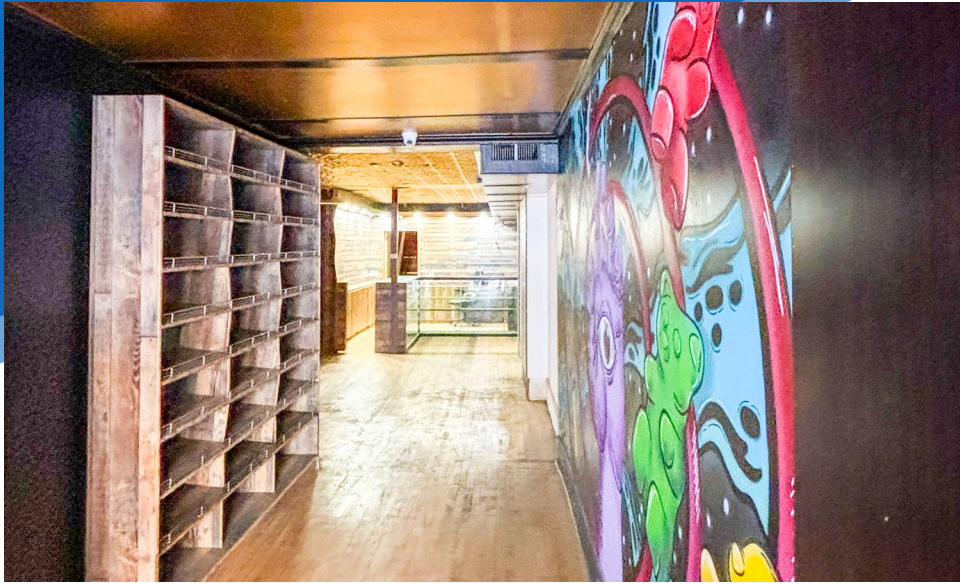
MERIDIAN
RETAIL LEASING

All information supplied is from sources deemed reliable and is furnished subject to errors, omissions, modifications, removal of the listing from sale or lease, and to any listing conditions, including the rates and manner of payment of commissions for particular offerings imposed by Meridian Capital Group. This information may include estimates and projections prepared by Meridian Capital Group with respect to future events, and these future events may or may not actually occur. Such estimates and projections reflect various assumptions concerning anticipated results. While Meridian Capital Group believes these assumptions are reasonable, there can be no assurance that any of these estimates and projections will be correct. Therefore, actual results may vary materially from these estimates and projections. Any square footage dimensions set forth are approximate.

238 EAST 60TH STREET

UPPER EAST SIDE, NYC | Between Second and Third Avenues

RETAIL FOR LEASE



INTERIOR

JAMES FAMULARO

President
646.658.7373
jfamularo@meridiancapital.com

COLE KLEPPINGER

Associate
212.468.5993
ckleppinger@meridiancapital.com



MERIDIAN
RETAIL LEASING

All information supplied is from sources deemed reliable and is furnished subject to errors, omissions, modifications, removal of the listing from sale or lease, and to any listing conditions, including the rates and manner of payment of commissions for particular offerings imposed by Meridian Capital Group. This information may include estimates and projections prepared by Meridian Capital Group with respect to future events, and these future events may or may not actually occur. Such estimates and projections reflect various assumptions concerning anticipated results. While Meridian Capital Group believes these assumptions are reasonable, there can be no assurance that any of these estimates and projections will be correct. Therefore, actual results may vary materially from these estimates and projections. Any square footage dimensions set forth are approximate.

238 EAST 60TH STREET

UPPER EAST SIDE, NYC | Between Second and Third Avenues

RETAIL FOR LEASE

NEIGHBORS

LEXINGTON AVENUE

THIRD AVENUE

SECOND AVENUE

AT&T
Torino Inc
DUANEreade by Walgreens
Yogurt and Candy Bar
SPA CATALINA
COHEN'S Fashion Optical

ISLE OF CAPRI
BEYOND THE BEARD
CHIPOTLE MEXICAN GRILL
Berry Blonde

E 61ST STREET

CUSTOM INK
sunglass hut
Juice Island

FESTIVAL
Hawa smoothie
VERO
CITY HOPS

serendipity 3

Sage Fine Art Gallery

JOHN ROSSETTI ANTIQUES

Capriotti's SANDWICH SHOP

Subway Inn, A.S.

THE JEFFREY

bloomingdale's

E 60TH STREET

Anassa Patsy's TAVERNA
CINEMA 1-2-3 BY ANGELIKA
Clarks
Capital One
CANALETTO plump
Tina Nail Spa
DIAMOND ESSENCE
HAIR THERAPY SALON & SPA
my Gym
Gourmary

238 EAST 60TH STREET

E 59TH STREET

Capital One
Läderach chocolater suisse
BANK OF AMERICA
citi
TEMPUR-PEDIC

McKINNON AND HARRIS
SAMUEL & SONS
OSBORNE & LITTLE
FORTUNY
CB2

KATAGIRI JAPANESE GROCERY
JUST SHADES
Loro Piana
Upper East Side Tan
ONE SALON
JUST BULBS
WATERWORKS
FOUNDRY

CRUNCH
MATTO
J's Cleaners

E 58TH STREET

Orangetheory FITNESS
Casper
McDonald's

MATTRESS FIRM
LOVESAC
Hästens
BLOOM'S TAVERN NYC
FERRELL MITTMAN
CHOLA COASTAL MEXICAN CUISINE
A CLUB
EUROPEAN WAX

JAMES FAMULARO

President
646.658.7373
jfamularo@meridiancapital.com

COLE KLEPPINGER

Associate
212.468.5993
ckleppinger@meridiancapital.com



MERIDIAN RETAIL LEASING

All information supplied is from sources deemed reliable and is furnished subject to errors, omissions, modifications, removal of the listing from sale or lease, and to any listing conditions, including the rates and manner of payment of commissions for particular offerings imposed by Meridian Capital Group. This information may include estimates and projections prepared by Meridian Capital Group with respect to future events, and these future events may or may not actually occur. Such estimates and projections reflect various assumptions concerning anticipated results. While Meridian Capital Group believes these assumptions are reasonable, there can be no assurance that any of these estimates and projections will be correct. Therefore, actual results may vary materially from these estimates and projections. Any square footage dimensions set forth are approximate.