

# 218

## LENOX AVENUE HARLEM, NYC

Corner of Lenox Avenue & West 121<sup>st</sup> Street

RESTAURANT FOR LEASE

### APPROXIMATE SIZE

1,400 SF + Basement

### ASKING RENT

\$11,000/Month

### POSSESSION

Immediate

### TERM

5-15 Years

### FRONTAGE

75+ FT Wraparound

### COMMENTS

- Step-down restaurant space with new ventilation and gas lines in place
- Built-out bar space
- Interior access to storage in the basement
- Expansive outdoor seating available

### NEIGHBORS

Barawine • Eddy Dance + Pilates • Settepani  
• Sugar Hill Creamery • Sotto Casa • Mia  
Skin Bar • Plant Corner • Archer & Goat

### TRANSPORTATION

2 3



PROPERTY INFORMATION

**JAMES FAMULARO**  
President

**DANE HARLOWE**  
Director  
212.468.5966  
dharlowe@meridiancapital.com

**NOAM AZIZ**  
Associate  
212.468.5984  
naziz@meridiancapital.com



**MERIDIAN**  
RETAIL LEASING

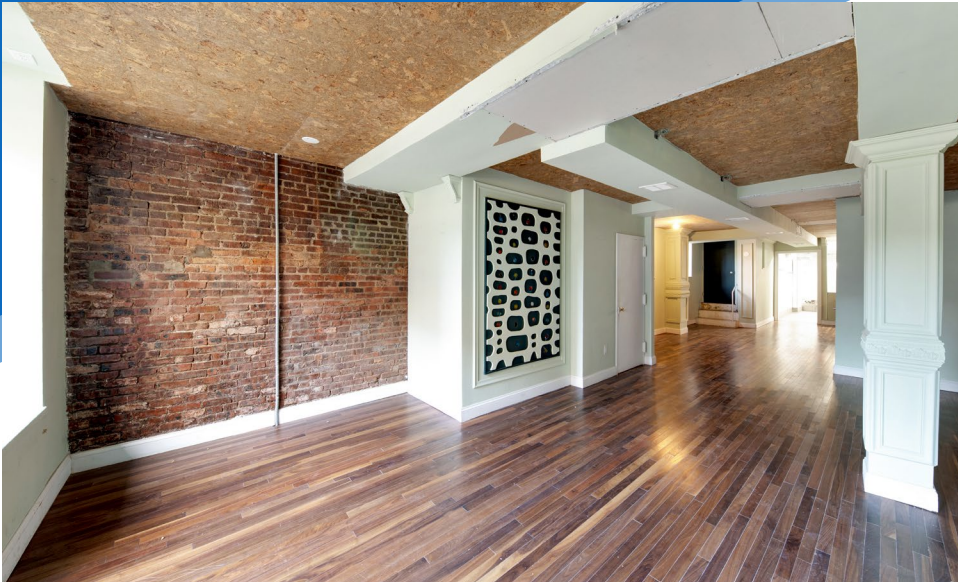
All information supplied is from sources deemed reliable and is furnished subject to errors, omissions, modifications, removal of the listing from sale or lease, and to any listing conditions, including the rates and manner of payment of commissions for particular offerings imposed by Meridian Capital Group. This information may include estimates and projections prepared by Meridian Capital Group with respect to future events, and these future events may or may not actually occur. Such estimates and projections reflect various assumptions concerning anticipated results. While Meridian Capital Group believes these assumptions are reasonable, there can be no assurance that any of these estimates and projections will be correct. Therefore, actual results may vary materially from these estimates and projections. Any square footage dimensions set forth are approximate.



# 218 LENOX AVENUE

HARLEM, NYC | Corner of Lenox Avenue & West 121<sup>st</sup> Street

# RESTAURANT FOR LEASE



INTERIOR

**JAMES FAMULARO**  
President

**DANE HARLOWE**  
Director  
212.468.5966  
dharlowe@meridancapital.com

**NOAM AZIZ**  
Associate  
212.468.5984  
naziz@meridancapital.com



**MERIDIAN**  
RETAIL LEASING

All information supplied is from sources deemed reliable and is furnished subject to errors, omissions, modifications, removal of the listing from sale or lease, and to any listing conditions, including the rates and manner of payment of commissions for particular offerings imposed by Meridian Capital Group. This information may include estimates and projections prepared by Meridian Capital Group with respect to future events, and these future events may or may not actually occur. Such estimates and projections reflect various assumptions concerning anticipated results. While Meridian Capital Group believes these assumptions are reasonable, there can be no assurance that any of these estimates and projections will be correct. Therefore, actual results may vary materially from these estimates and projections. Any square footage dimensions set forth are approximate.

218 LENOX AVENUE  
 HARLEM, NYC | Corner of Lenox Avenue & West 121<sup>st</sup> Street

RESTAURANT FOR LEASE

The map displays the following businesses and institutions:

- W 123rd Street:** Sweet Treats, Citi Bike, Seventh-Day Adventist Church, Therapy Wine Bar.
- W 122nd Street:** Golden Dragon, Dina of Dina's Kitchen, Good Choice Ming Restaurant, Senegalese Hair Braiding, Great Tomorrows USA School.
- W 121st Street:** Jenny Food Court, Future Leaders Institute Charter School, Harlemite, United Methodist Church, ST. MARY'S, ED DANCE, 218 Lenox Avenue (highlighted), House, Triumph Baptist Church.
- W 120th Street:** Debre Sahel Beata LeMariam Ethiopian Orthodox Tewahedo Church, D'clenis Unisex, Mt Pleasant Christian Academy, MARIACOMMUNION, Mount Olivet Baptist Church, BARAWINE, BB sandwich bar, CECIL & CHINO BARBER SHOP.
- W 119th Street:** A Touch of Magic, Caribbean Krave, Mangoville NY, Harlem Restoration Project, Astraea Makeup, Cutzbymoe, International Gospel Helpers Church, Tony's Place Bed & Breakfast, THE LOC GOD SALON, ARCHER & GOAT PLANT CORNER, SETTEPANI, Sugar J fill Creamery, Trintage, Mildred at the Park, MONA MUSEUM OF NON-VISIBLE ART, Green Earth Organic Mr. Bubble!, The New Ebenezer Baptist Church.

NEIGHBORS

JAMES FAMULARO  
 President

DANE HARLOWE  
 Director  
 212.468.5966  
 dharlowe@meridiancapital.com

NOAM AZIZ  
 Associate  
 212.468.5984  
 naziz@meridiancapital.com



**MERIDIAN**  
 RETAIL LEASING

All information supplied is from sources deemed reliable and is furnished subject to errors, omissions, modifications, removal of the listing from sale or lease, and to any listing conditions, including the rates and manner of payment of commissions for particular offerings imposed by Meridian Capital Group. This information may include estimates and projections prepared by Meridian Capital Group with respect to future events, and these future events may or may not actually occur. Such estimates and projections reflect various assumptions concerning anticipated results. While Meridian Capital Group believes these assumptions are reasonable, there can be no assurance that any of these estimates and projections will be correct. Therefore, actual results may vary materially from these estimates and projections. Any square footage dimensions set forth are approximate.