

# 215

## MADISON AVENUE MURRAY HILL, NYC

Corner of Madison Avenue & East 36<sup>th</sup> Street

MEDICAL FOR LEASE



PROPERTY INFORMATION

### APPROXIMATE SIZE

Ground Floor: 2,455 SF

### ASKING RENT

\$14,000/Month

### POSSESSION

Immediate

### TERM

Negotiable

### FRONTAGE

50+ FT

### COMMENTS

- Built-out corner medical space
- Motivated landlord with flexible terms
- Highly visible corner with tons of exposure on Madison Avenue
- Centrally located to all major transportation systems

### NEIGHBORS

The Empire State Building • Chopt • The Ainsworth • Murray Hill Diner • Unregular Pizza • Serafina • Mad Dog • Ai Fiori • American Eagle • Lifetime Fitness

### TRANSPORTATION

B D F M N Q R 6

### JAMES FAMULARO

President

### GARRETT KELLY

Director

212.468.5939

gkelly@meridiancapital.com

### NOAM AZIZ

Associate

212.468.5984

naziz@meridiancapital.com

### MAX FREUDENBERGER

Associate

212.468.5951

mfreudenberger@meridiancapital.com

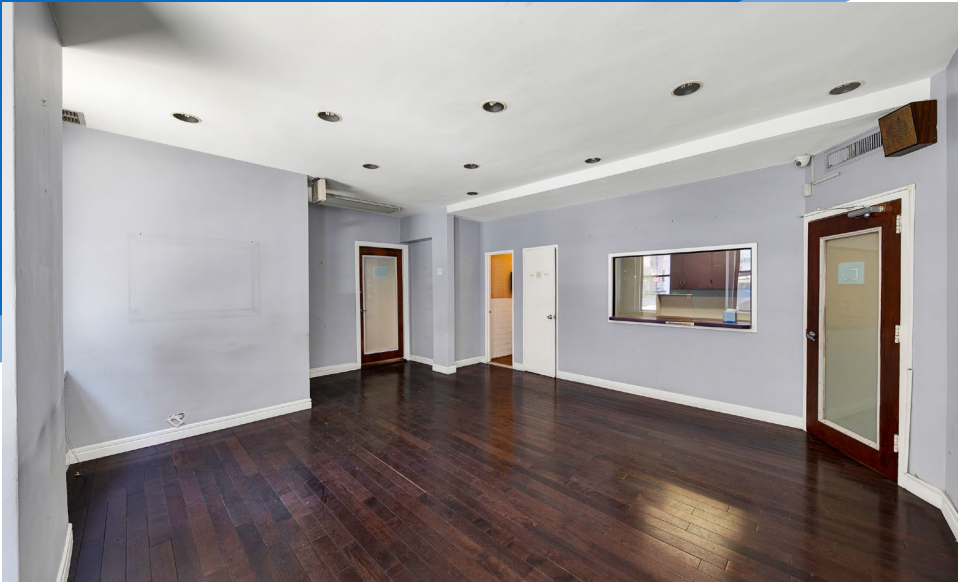


All information supplied is from sources deemed reliable and is furnished subject to errors, omissions, modifications, removal of the listing from sale or lease, and to any listing conditions, including the rates and manner of payment of commissions for particular offerings imposed by Meridian Capital Group. This information may include estimates and projections prepared by Meridian Capital Group with respect to future events, and these future events may or may not actually occur. Such estimates and projections reflect various assumptions concerning anticipated results. While Meridian Capital Group believes these assumptions are reasonable, there can be no assurance that any of these estimates and projections will be correct. Therefore, actual results may vary materially from these estimates and projections. Any square footage dimensions set forth are approximate.

# 215 MADISON AVENUE

MURRAY HILL, NYC | Corner of Madison Avenue and East 36<sup>th</sup> Street

MEDICAL FOR LEASE



INTERIOR

**JAMES FAMULARO**  
President

**GARRETT KELLY**  
Director  
212.468.5939  
gkelly@meridiancapital.com

**NOAM AZIZ**  
Associate  
212.468.5984  
naziz@meridiancapital.com

**MAX FREUDENBERGER**  
Associate  
212.468.5951  
mfreudenberg@meridiancapital.com



All information supplied is from sources deemed reliable and is furnished subject to errors, omissions, modifications, removal of the listing from sale or lease, and to any listing conditions, including the rates and manner of payment of commissions for particular offerings imposed by Meridian Capital Group. This information may include estimates and projections prepared by Meridian Capital Group with respect to future events, and these future events may or may not actually occur. Such estimates and projections reflect various assumptions concerning anticipated results. While Meridian Capital Group believes these assumptions are reasonable, there can be no assurance that any of these estimates and projections will be correct. Therefore, actual results may vary materially from these estimates and projections. Any square footage dimensions set forth are approximate.

# 215 MADISON AVENUE

MURRAY HILL, NYC | Corner of Madison Avenue and East 36<sup>th</sup> Street

MEDICAL FOR LEASE

FLOOR PLAN



ENTRANCE ON MADISON AVENUE

**JAMES FAMULARO**  
President

**GARRETT KELLY**  
Director  
212.468.5939  
gkelly@meridiancapital.com

**NOAM AZIZ**  
Associate  
212.468.5984  
naziz@meridiancapital.com

**MAX FREUDENBERGER**  
Associate  
212.468.5951  
mfreudenberg@meridiancapital.com



All information supplied is from sources deemed reliable and is furnished subject to errors, omissions, modifications, removal of the listing from sale or lease, and to any listing conditions, including the rates and manner of payment of commissions for particular offerings imposed by Meridian Capital Group. This information may include estimates and projections prepared by Meridian Capital Group with respect to future events, and these future events may or may not actually occur. Such estimates and projections reflect various assumptions concerning anticipated results. While Meridian Capital Group believes these assumptions are reasonable, there can be no assurance that any of these estimates and projections will be correct. Therefore, actual results may vary materially from these estimates and projections. Any square footage dimensions set forth are approximate.

NEIGHBORS

**JAMES FAMULARO**  
President

**GARRETT KELLY**  
Director  
212.468.5939  
gkelly@meridiancapital.com

**NOAM AZIZ**  
Associate  
212.468.5984  
naziz@meridiancapital.com

**MAX FREUDENBERGER**  
Associate  
212.468.5951  
mfreudenberg@meridiancapital.com



All information supplied is from sources deemed reliable and is furnished subject to errors, omissions, modifications, removal of the listing from sale or lease, and to any listing conditions, including the rates and manner of payment of commissions for particular offerings imposed by Meridian Capital Group. This information may include estimates and projections prepared by Meridian Capital Group with respect to future events, and these future events may or may not actually occur. Such estimates and projections reflect various assumptions concerning anticipated results. While Meridian Capital Group believes these assumptions are reasonable, there can be no assurance that any of these estimates and projections will be correct. Therefore, actual results may vary materially from these estimates and projections. Any square footage dimensions set forth are approximate.