

# 116

## ELIZABETH STREET NOLITA, NYC

Between Grand & Broome Streets

RETAIL FOR LEASE

### APPROXIMATE SIZE

Second Floor: 2,300 SF

### ASKING RENT

\$8,300/Month  
\$70,000 Key-Money

### POSSESSION

Immediate

### TERM

2 Years + 3 Year Option

### COMMENTS

- Currently "The Second Floor Salon"
- Turn-key hair salon with 8 chairs
- Private elevator directly to each floor
- In the heart of Nolita

### NEIGHBORS

The Bowery Beer Garden • Sanmiwago • Copy • Chase • Kumon • Wah Fung • Alex + Ani • Popeyes • Sun Hong Wong • LaoJie HotPot • Prince Tea House

### TRANSPORTATION

B D N Q 4 5 6 J Z



PROPERTY INFORMATION

### JAMES FAMULARO

President  
646.658.7373  
jfamularo@meridiancapital.com

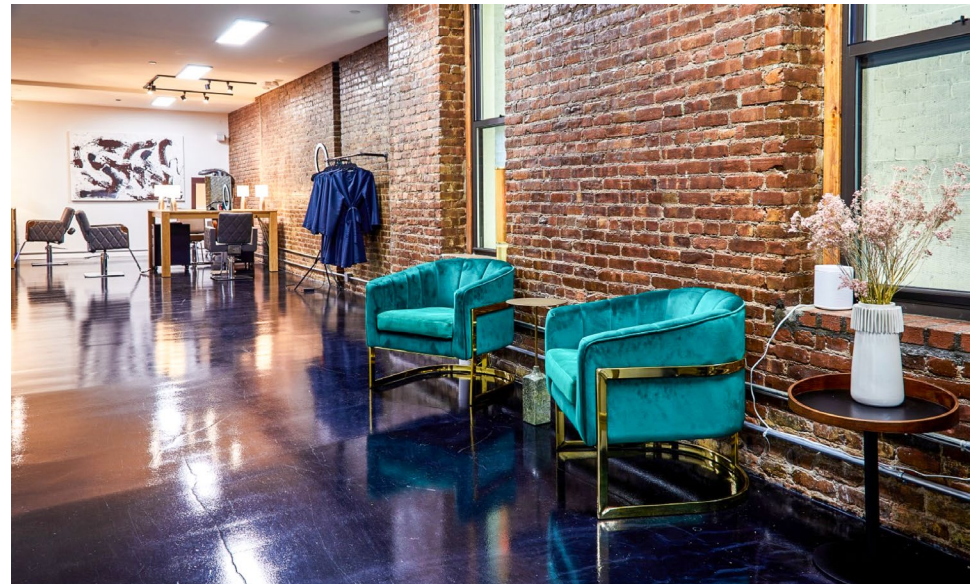
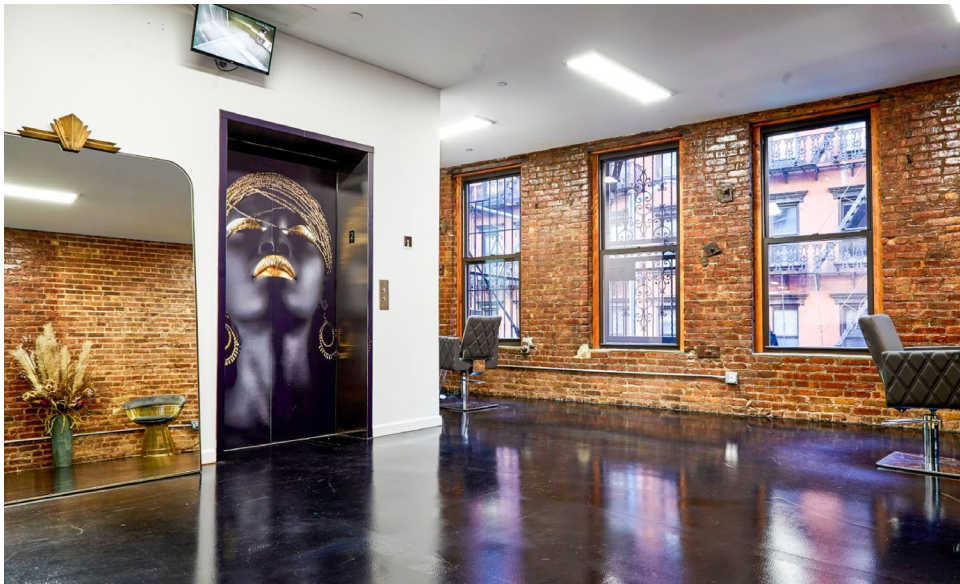
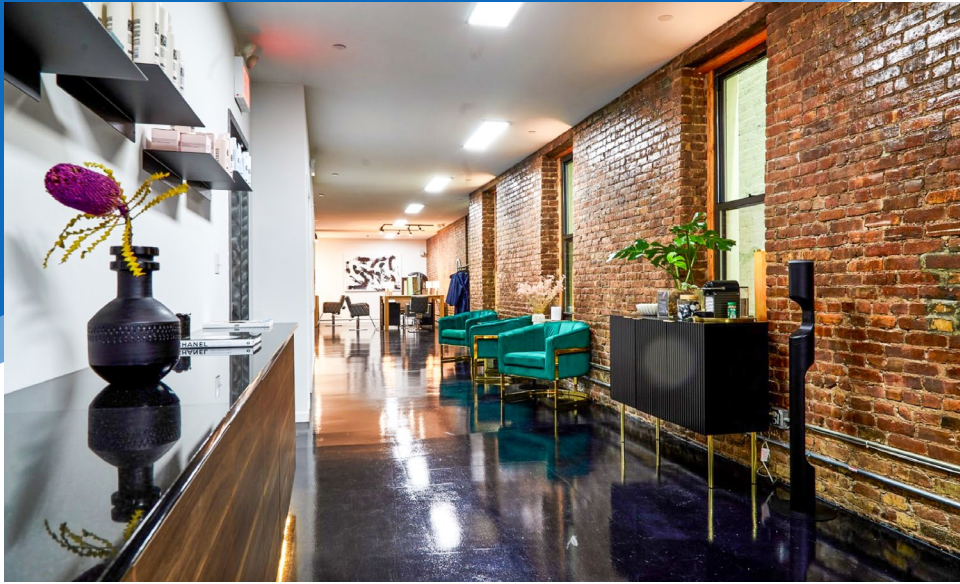
### JORDAN LANGER

Associate  
212.468.5977  
jlanger@meridiancapital.com



**MERIDIAN**  
RETAIL LEASING

All information supplied is from sources deemed reliable and is furnished subject to errors, omissions, modifications, removal of the listing from sale or lease, and to any listing conditions, including the rates and manner of payment of commissions for particular offerings imposed by Meridian Capital Group. This information may include estimates and projections prepared by Meridian Capital Group with respect to future events, and these future events may or may not actually occur. Such estimates and projections reflect various assumptions concerning anticipated results. While Meridian Capital Group believes these assumptions are reasonable, there can be no assurance that any of these estimates and projections will be correct. Therefore, actual results may vary materially from these estimates and projections. Any square footage dimensions set forth are approximate.



INTERIOR

**JAMES FAMULARO**

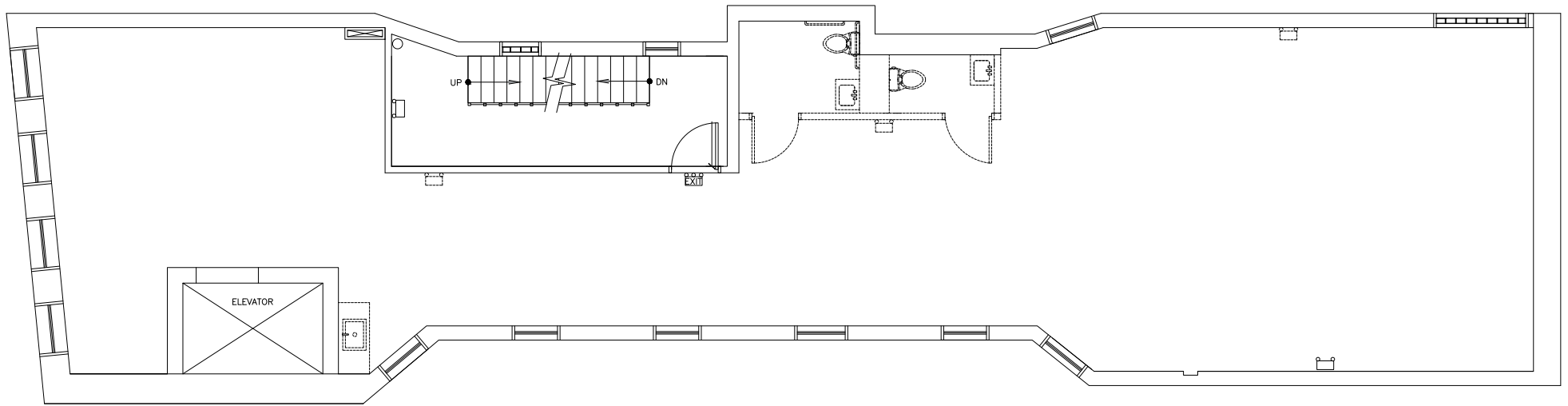
President  
646.658.7373  
jfamularo@meridiancapital.com

**JORDAN LANGER**

Associate  
212.468.5977  
jlanger@meridiancapital.com



**MERIDIAN**  
RETAIL LEASING



FLOOR PLAN

**JAMES FAMULARO**

President  
646.658.7373  
jfamularo@meridiancapital.com

**JORDAN LANGER**

Associate  
212.468.5977  
jlanger@meridiancapital.com



**MERIDIAN**  
RETAIL LEASING

116 ELIZABETH STREET

NOLITA, NYC | Between Grand and Broome Streets

RETAIL FOR LEASE

NEIGHBORS

**JAMES FAMULARO**  
 President  
 646.658.7373  
 jfamularo@meridiancapital.com

**JORDAN LANGER**  
 Associate  
 212.468.5977  
 jlanger@meridiancapital.com



All information supplied is from sources deemed reliable and is furnished subject to errors, omissions, modifications, removal of the listing from sale or lease, and to any listing conditions, including the rates and manner of payment of commissions for particular offerings imposed by Meridian Capital Group. This information may include estimates and projections prepared by Meridian Capital Group with respect to future events, and these future events may or may not actually occur. Such estimates and projections reflect various assumptions concerning anticipated results. While Meridian Capital Group believes these assumptions are reasonable, there can be no assurance that any of these estimates and projections will be correct. Therefore, actual results may vary materially from these estimates and projections. Any square footage dimensions set forth are approximate.