

525

WEST 26TH STREET CHELSEA, NYC

Between Tenth & Eleventh Avenues

RETAIL FOR LEASE

APPROXIMATE SIZE

Fourth Floor: 12,000 SF

ASKING RENT

\$55 PSF

POSSESSION

Immediate

TERM

5-10 Years

CEILING HEIGHT

12 FT



PROPERTY INFORMATION

COMMENTS

- Previously "The Wright Fit"
- White-boxed space with wraparound windows
- Two 800 SF terraces on each side of space that open up with garage doors to create a unique indoor/outdoor concept
- Entire building underwent recent reconstruction
- Directly overlooking the highline
- Built out as an ultra-luxury fitness studio but will entertain all uses

NEIGHBORS

Lamborghini Lounge • Marquee New York • 287 Gallery • Selina • Hav & Mar • Hollis Taggart • City Thrift • Ovest Pizzoteca • Chop Shop

TRANSPORTATION



JAMES FAMULARO
President

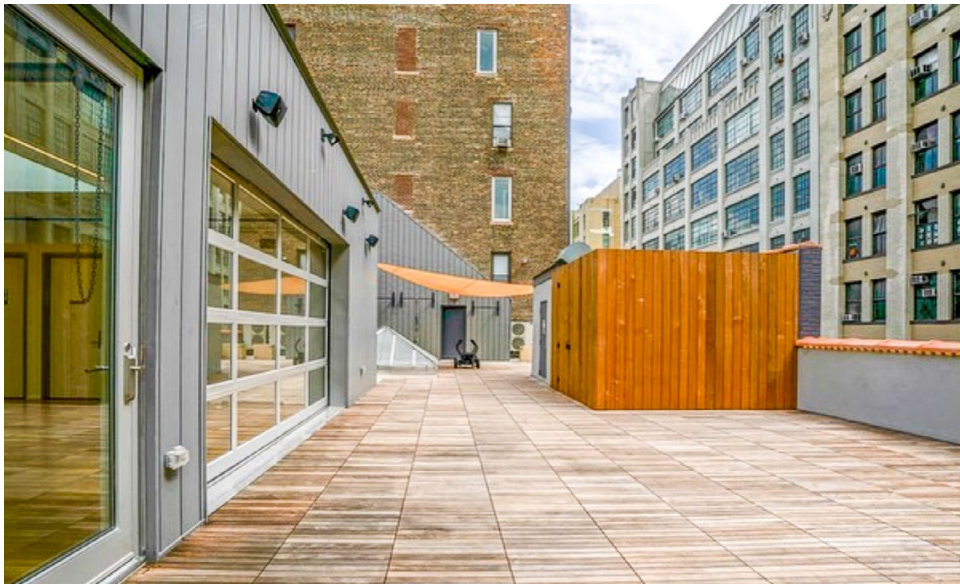
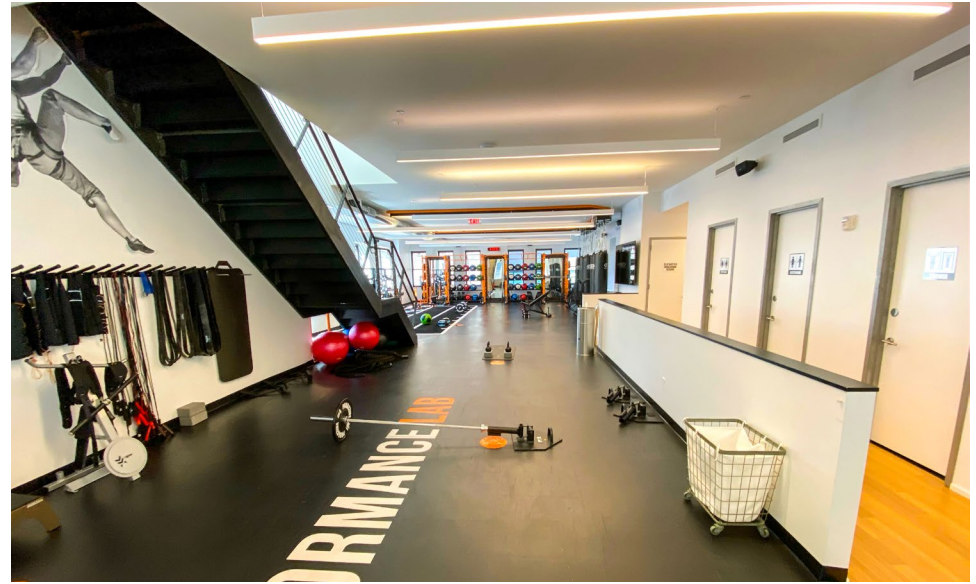
JOHN ROESCH
Director
212.468.5971
jroesch@meridiancapital.com

SARA LAMSTEIN
Associate
212.468.5945
slamstein@meridiancapital.com



MERIDIAN
RETAIL LEASING

All information supplied is from sources deemed reliable and is furnished subject to errors, omissions, modifications, removal of the listing from sale or lease, and to any listing conditions, including the rates and manner of payment of commissions for particular offerings imposed by Meridian Capital Group. This information may include estimates and projections prepared by Meridian Capital Group with respect to future events, and these future events may or may not actually occur. Such estimates and projections reflect various assumptions concerning anticipated results. While Meridian Capital Group believes these assumptions are reasonable, there can be no assurance that any of these estimates and projections will be correct. Therefore, actual results may vary materially from these estimates and projections. Any square footage dimensions set forth are approximate.



INTERIOR

JAMES FAMULARO
President

JOHN ROESCH
Director
212.468.5971
jroesch@meridiancapital.com

SARA LAMSTEIN
Associate
212.468.5945
slamstein@meridiancapital.com



MERIDIAN
RETAIL LEASING

525 WEST 26TH STREET

CHELSEA, NYC | Between Tenth and Eleventh Avenues

RETAIL FOR LEASE



NEIGHBORS

JAMES FAMULARO
President

JOHN ROESCH
Director
212.468.5971
jroesch@meridiancapital.com

SARA LAMSTEIN
Associate
212.468.5945
slamstein@meridiancapital.com



MERIDIAN
RETAIL LEASING

All information supplied is from sources deemed reliable and is furnished subject to errors, omissions, modifications, removal of the listing from sale or lease, and to any listing conditions, including the rates and manner of payment of commissions for particular offerings imposed by Meridian Capital Group. This information may include estimates and projections prepared by Meridian Capital Group with respect to future events, and these future events may or may not actually occur. Such estimates and projections reflect various assumptions concerning anticipated results. While Meridian Capital Group believes these assumptions are reasonable, there can be no assurance that any of these estimates and projections will be correct. Therefore, actual results may vary materially from these estimates and projections. Any square footage dimensions set forth are approximate.