

513-525

WEST 26TH STREET
CHELSEA, NYC

Between Tenth & Eleventh Avenues

RETAIL/OFFICE FOR LEASE



APPROXIMATE SIZE

1st-9th Floors: 3,000-11,000 SF
Divisions Possible

ASKING RENT
\$55 PSF

POSSESSION
Immediate

TERM
10 Years

FRONTAGE
15 FT

COMMENTS

- Upscale newly renovated building
- Floor-to-ceiling windows
- Multiple floors with large outdoor terraces
- Adjacent to the entrance of the Highline
- Landmarked street
- All floors have been fully white boxed and have state of the art MEP's in place

NEIGHBORS

Lamborghini Lounge • Marquee New York • 287 Gallery • Selina • Hav & Mar • Hollis Taggart • City Thrift • Ovest Pizzoteca • Chop Shop

TRANSPORTATION

C E

M11 M23

PROPERTY INFORMATION

JAMES FAMULARO
President

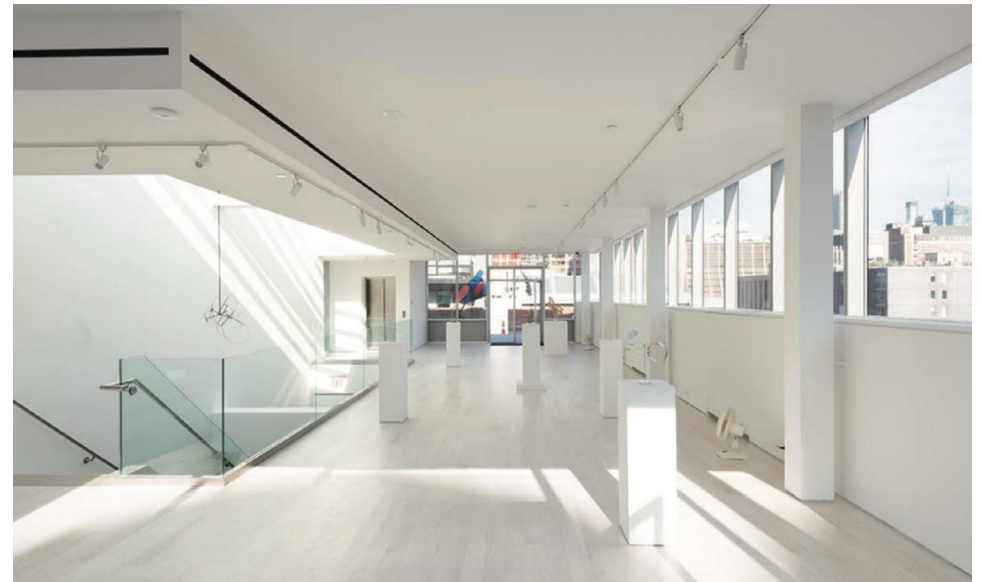
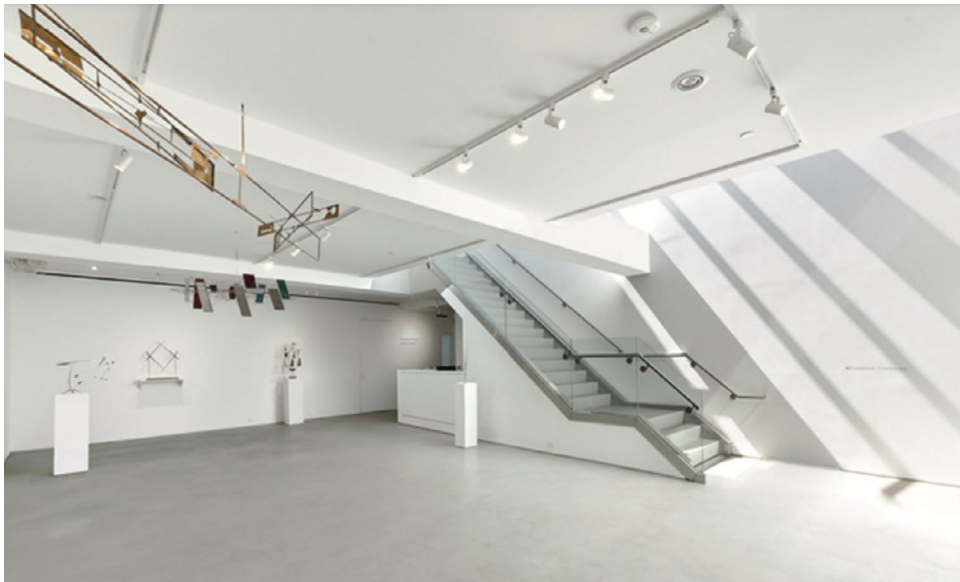
JOHN ROESCH
Director
212.468.5971
jroesch@meridiancapital.com

SARA LAMSTEIN
Associate
212.468.5945
slamstein@meridiancapital.com



MERIDIAN
RETAIL LEASING

All information supplied is from sources deemed reliable and is furnished subject to errors, omissions, modifications, removal of the listing from sale or lease, and to any listing conditions, including the rates and manner of payment of commissions for particular offerings imposed by Meridian Capital Group. This information may include estimates and projections prepared by Meridian Capital Group with respect to future events, and these future events may or may not actually occur. Such estimates and projections reflect various assumptions concerning anticipated results. While Meridian Capital Group believes these assumptions are reasonable, there can be no assurance that any of these estimates and projections will be correct. Therefore, actual results may vary materially from these estimates and projections. Any square footage dimensions set forth are approximate.



INTERIOR

JAMES FAMULARO
President

JOHN ROESCH
Director
212.468.5971
jroesch@meridiancapital.com

SARA LAMSTEIN
Associate
212.468.5945
slamstein@meridiancapital.com



MERIDIAN
RETAIL LEASING

NEIGHBORS

W 28TH STREET

HARSH COLLECTIVE, NEW YORK CAKE POPS EST. 2010, MANHATTAN, PORCHLIGHT, Antoinette Cake Company Catering, I Had Cancer, COLOMBE COFFEE ROASTERS, MZ Urban Art, COLOMBE, FRED ASTAIRE DANCE STUDIOS, EAGLE, flowers.com, DE VERA, FOLEY GALLERY, SKYE GALLERY, SOLENO TOSCANO, HELLER GALLERY, Porteno Restaurant, KASMIN DEBUCK NYC GALLERY OPENINGS, citibike

W 27TH STREET

Abuddhabooth, ASSOULINE, FORTSMITH FIRE ESCAPE, JOHN HARDY, MORGANE LE FAY, hay & mar, citibike provided by Lyft, THE MCKITTRICK HOTEL EST. 1938, Selina M.J., MUSIC FOR a LISTENING BAR & LOUNGE, Best BABYMART, GEORGE, LAMBORGHINI LOUNGE, HOLLIS TAGGART, CITY THRIFT, TEMPLON, MARQUEE NEW YORK, 287 Gallery

W 26TH STREET

THE LIMIT, URSULA VON RYDINGSVARD, Fergus McCaffrey, Alexander Gray Associates, GREENE NAFTALI, sundaram tagore gallery, GALERIE LELONG & Co. Valeska Soares, MORGAN LEHMAN, BERRY CAMPBELL, CHEIM & READ, THE GLASSHOUSE, messineo art projects wyman contemporary, GALLERY HENOCH, DOOSAN ART CENTER, LAVAN, Marlborough NEW YORK, Chez Bushwick, Avenues

W 25TH STREET

SEARS PEYTON GALLERY NEW YORK · LOS ANGELES, W W, Tan Holdings, Bastian Michael, Cowles Charles Gallery, Petzel, YOSSI MILO, LUHRING AUGUSTINE, Print Center New York, Hill Art Foundation, Gagosian, MATTHEW MARKS GALLERY, MARIANNE BOESKY GALLERY, Studio525, GLADSTONE GALLERY, SILVERLENS, LEHMANN MAUPIN, 10th Avenue Pizza & Cafe, CHOP—SHOP, SUBWAY, BOTTINO, HOUSE OF WARIS BOTANICALS, Paradise Market Place, THE ORCHARD TOWNHOUSE

513-525 WEST 26TH STREET

ELEVENTH AVENUE | **TENTH AVENUE**

THE HIGHLINE

JAMES FAMULARO
 President

JOHN ROESCH
 Director
 212.468.5971
 jroesch@meridiancapital.com

SARA LAMSTEIN
 Associate
 212.468.5945
 slamstein@meridiancapital.com



MERIDIAN
 RETAIL LEASING

All information supplied is from sources deemed reliable and is furnished subject to errors, omissions, modifications, removal of the listing from sale or lease, and to any listing conditions, including the rates and manner of payment of commissions for particular offerings imposed by Meridian Capital Group. This information may include estimates and projections prepared by Meridian Capital Group with respect to future events, and these future events may or may not actually occur. Such estimates and projections reflect various assumptions concerning anticipated results. While Meridian Capital Group believes these assumptions are reasonable, there can be no assurance that any of these estimates and projections will be correct. Therefore, actual results may vary materially from these estimates and projections. Any square footage dimensions set forth are approximate.