

236

EAST 112TH STREET EAST HARLEM, NYC

Between Second & Third Avenues

RETAIL FOR LEASE

APPROXIMATE SIZE

Ground Floor: 650 SF

ASKING RENT

\$4,000/Month

POSSESSION

Immediate

TERM

5-10 Years

FRONTAGE

20 FT

COMMENTS

- Ground floor office in white-box condition
- Natural light
- Motivated landlord

NEIGHBORS

Brother's Bakery Café • Teddy's Bar & Grill • Monte Carlo Diner • Spice Hut • Amma Grill • Robust Shawarma • Janie's • Ollin NYC • Domin's Pizza

TRANSPORTATION

4 5 6

M101 M102 M103



PROPERTY INFORMATION

JAMES FAMULARO
President

DANE HARLOWE
Director
212.468.5966
dharlowe@meridiancapital.com

ALEC NAMDAR
Associate
212.468.5915
anamdar@meridiancapital.com



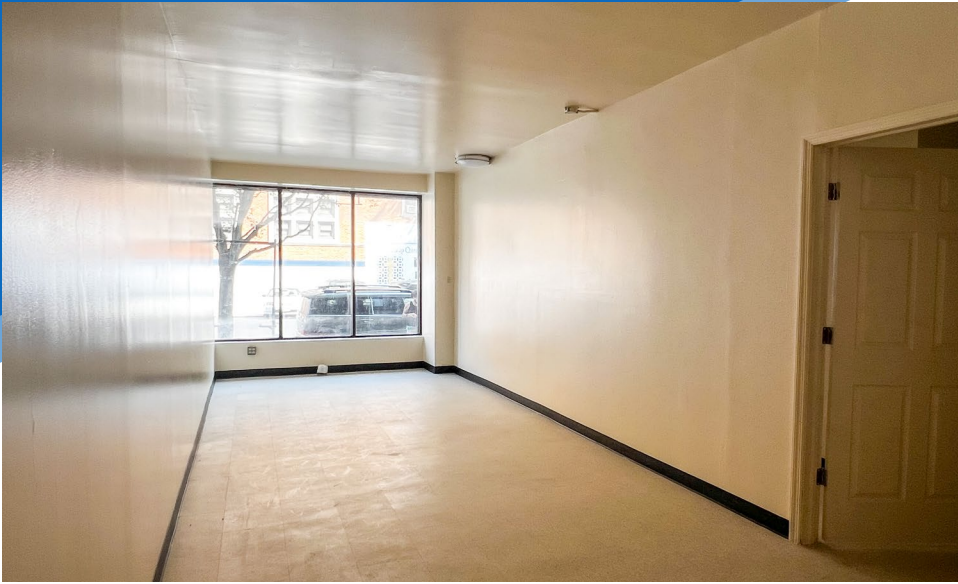
MERIDIAN
RETAIL LEASING

All information supplied is from sources deemed reliable and is furnished subject to errors, omissions, modifications, removal of the listing from sale or lease, and to any listing conditions, including the rates and manner of payment of commissions for particular offerings imposed by Meridian Capital Group. This information may include estimates and projections prepared by Meridian Capital Group with respect to future events, and these future events may or may not actually occur. Such estimates and projections reflect various assumptions concerning anticipated results. While Meridian Capital Group believes these assumptions are reasonable, there can be no assurance that any of these estimates and projections will be correct. Therefore, actual results may vary materially from these estimates and projections. Any square footage dimensions set forth are approximate.

236 EAST 112TH STREET

EAST HARLEM, NYC | Between Second and Third Avenues

RETAIL FOR LEASE



INTERIOR

JAMES FAMULARO
President

DANE HARLOWE
Director
212.468.5966

dharlowe@meridiancapital.com

ALEC NAMDAR
Associate
212.468.5915

anamdar@meridiancapital.com



MERIDIAN
RETAIL LEASING

All information supplied is from sources deemed reliable and is furnished subject to errors, omissions, modifications, removal of the listing from sale or lease, and to any listing conditions, including the rates and manner of payment of commissions for particular offerings imposed by Meridian Capital Group. This information may include estimates and projections prepared by Meridian Capital Group with respect to future events, and these future events may or may not actually occur. Such estimates and projections reflect various assumptions concerning anticipated results. While Meridian Capital Group believes these assumptions are reasonable, there can be no assurance that any of these estimates and projections will be correct. Therefore, actual results may vary materially from these estimates and projections. Any square footage dimensions set forth are approximate.



EAST 112TH STREET

Milenio Bakery
 Dragon Town
 Third Avenue Corporation
 Nunez Discount Hardware
 S & N Discount
 Indo Pak HALAL RESTAURANT
 Lashout Lashes
 Teddy's BAR GRILL
 Spice Hut Indian Restaurant
 WDC SAFETY LLC
 Tres Leches Coffee
 THE Beauty CAVE

EAST 111TH STREET

Amor Cubano
 Pee Dee Steak House
 2005 Farmers Market
 Dell'Aria - Italian Coffee Roaster in New York City
 Gaudir
 Ricardo STEAKHOUSE
 Quesadillas Doña Maty
 The Susan Patricof Head Start Center
 Animal Adoption Center
 Veterinary Center
 Consolidated Edison Inc
 Tu Casa Deli
 LA NOSTRA PIZZA
 THE PAWS GURUS
 citibike

EAST 110TH STREET

Chevere Cuchifritos
 Mr Sulis Gourmet Deli Corporation
 Mom & Pop Corner Inc
 Sky Dragon
 Devils Ink Tattoos
 P.S. 083 Luis Munoz Rivera
 Raspberry Deli Grocery
 Anabelle Deli & Grocery
 Paqueteria Mexicana
 Aroma Coffee Shop
 Las Panteras Negras
 CASCALOTE
 Restaurant Aguirre
 Puchito Grocery
 Blue Sky Deli
 LA TROPEZIENNE
 Boulangerie Patisserie Viennoiserie
 Luna Food Market
 AMMA GRILL

EAST 109TH STREET

Little Italy Jewelers
 citibike
 Junior High School 117
 PAPA JOHNS
 Wing Gong I Kitchen
 El Pueblo Mexicano 2
 Chez Eleonore
 OLLIN NYC
 Island Bites

NEIGHBORS

JAMES FAMULARO
 President

DANE HARLOWE
 Director
 212.468.5966
 dharlowe@meridiancapital.com

ALEC NAMDAR
 Associate
 212.468.5915
 anamdar@meridiancapital.com



All information supplied is from sources deemed reliable and is furnished subject to errors, omissions, modifications, removal of the listing from sale or lease, and to any listing conditions, including the rates and manner of payment of commissions for particular offerings imposed by Meridian Capital Group. This information may include estimates and projections prepared by Meridian Capital Group with respect to future events, and these future events may or may not actually occur. Such estimates and projections reflect various assumptions concerning anticipated results. While Meridian Capital Group believes these assumptions are reasonable, there can be no assurance that any of these estimates and projections will be correct. Therefore, actual results may vary materially from these estimates and projections. Any square footage dimensions set forth are approximate.