

60

SECOND AVENUE EAST VILLAGE, NYC

Between East 3rd & 4th Streets

RESTAURANT FOR LEASE

APPROXIMATE SIZE

3,000 SF
Non-Contiguous Storage Basement

ASKING RENT

~~\$29,995/Month~~ Reduced
\$24,995/Month

POSSESSION

Immediate

TERM

10-15 Years

FRONTAGE

12 FT

COMMENTS

- Previously "Black Ant"
- Built-out restaurant space
- Recently renovated
- Full kitchen in place
- Previously had full liquor license

NEIGHBORS

Bar Verde • Gemma • The Wren • Cooper's Craft
+ Cocktails • Jean's • Barry's • La Colombe •
Van Leeuwen • San Marzano • Paradise Lost

TRANSPORTATION

4 5 6 F



JAMES FAMULARO
President

GREG GOLDBERG
Senior Director
646.780.4904
ggoldberg@meridiancapital.com



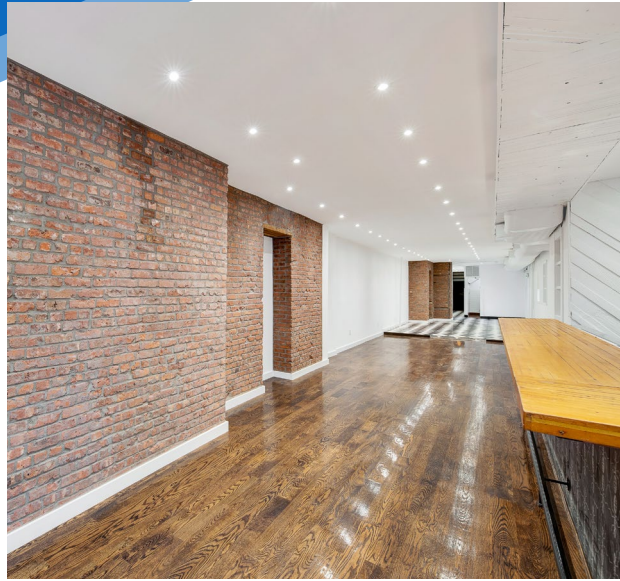
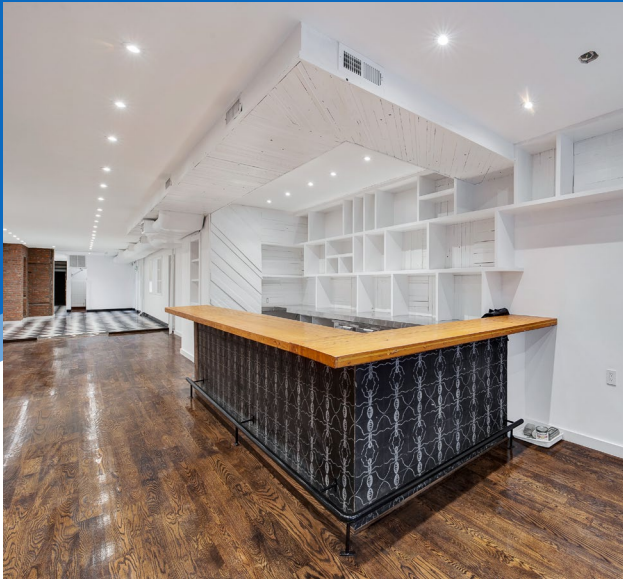
MERIDIAN
RETAIL LEASING

All information supplied is from sources deemed reliable and is furnished subject to errors, omissions, modifications, removal of the listing from sale or lease, and to any listing conditions, including the rates and manner of payment of commissions for particular offerings imposed by Meridian Capital Group. This information may include estimates and projections prepared by Meridian Capital Group with respect to future events, and these future events may or may not actually occur. Such estimates and projections reflect various assumptions concerning anticipated results. While Meridian Capital Group believes these assumptions are reasonable, there can be no assurance that any of these estimates and projections will be correct. Therefore, actual results may vary materially from these estimates and projections. Any square footage dimensions set forth are approximate.

60 SECOND AVENUE

EAST VILLAGE, NYC | Between East 3rd and 4th Streets

RESTAURANT FOR LEASE



INTERIOR

JAMES FAMULARO
President

GREG GOLDBERG
Senior Director
646.780.4904
ggoldberg@meridiancapital.com



MERIDIAN
RETAIL LEASING

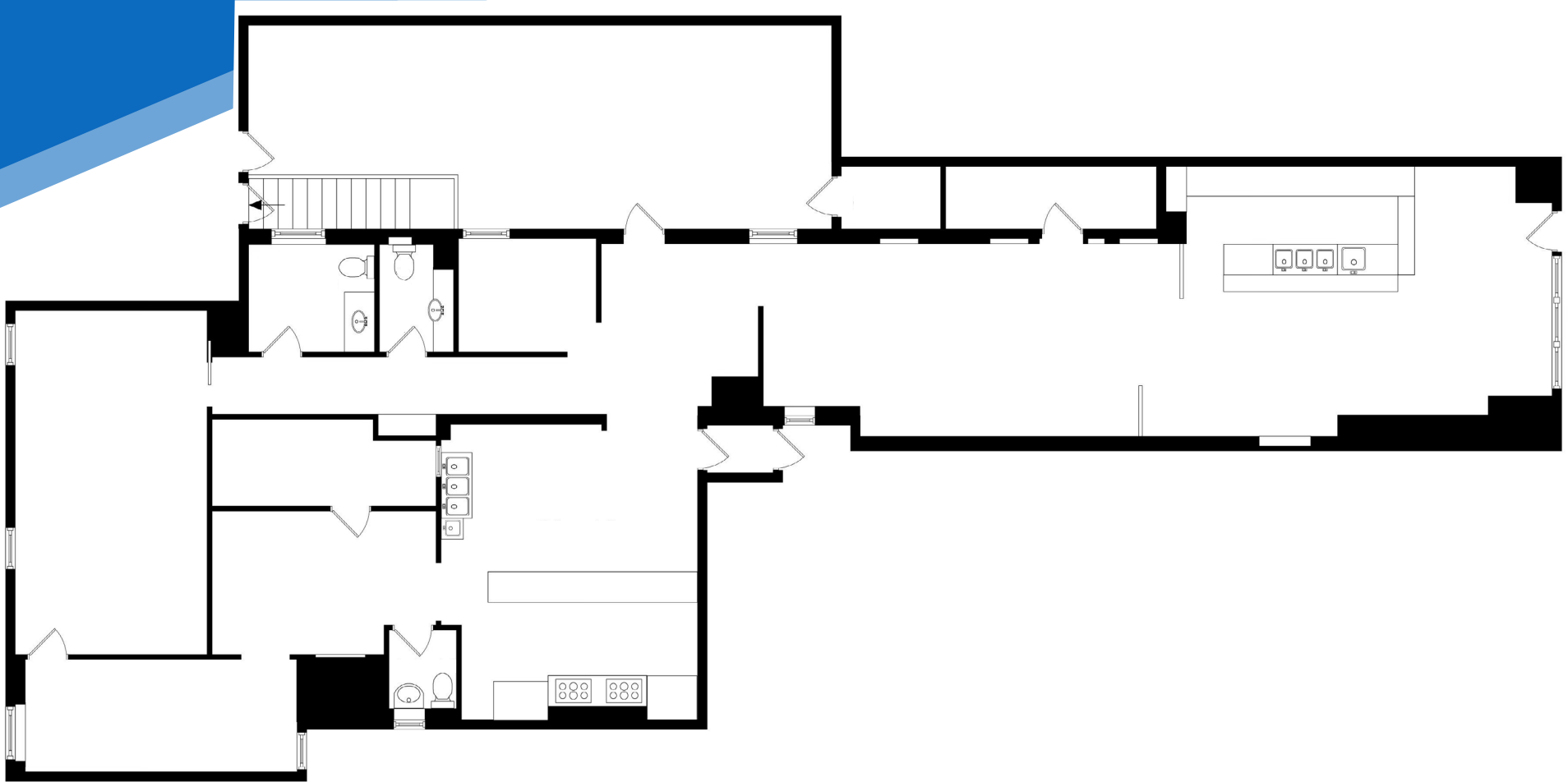
All information supplied is from sources deemed reliable and is furnished subject to errors, omissions, modifications, removal of the listing from sale or lease, and to any listing conditions, including the rates and manner of payment of commissions for particular offerings imposed by Meridian Capital Group. This information may include estimates and projections prepared by Meridian Capital Group with respect to future events, and these future events may or may not actually occur. Such estimates and projections reflect various assumptions concerning anticipated results. While Meridian Capital Group believes these assumptions are reasonable, there can be no assurance that any of these estimates and projections will be correct. Therefore, actual results may vary materially from these estimates and projections. Any square footage dimensions set forth are approximate.

60 SECOND AVENUE

EAST VILLAGE, NYC | Between East 3rd and 4th Streets

RESTAURANT FOR LEASE

FLOOR PLAN



JAMES FAMULARO
President

GREG GOLDBERG
Senior Director
646.780.4904
ggoldberg@meridiancapital.com



MERIDIAN
RETAIL LEASING

All information supplied is from sources deemed reliable and is furnished subject to errors, omissions, modifications, removal of the listing from sale or lease, and to any listing conditions, including the rates and manner of payment of commissions for particular offerings imposed by Meridian Capital Group. This information may include estimates and projections prepared by Meridian Capital Group with respect to future events, and these future events may or may not actually occur. Such estimates and projections reflect various assumptions concerning anticipated results. While Meridian Capital Group believes these assumptions are reasonable, there can be no assurance that any of these estimates and projections will be correct. Therefore, actual results may vary materially from these estimates and projections. Any square footage dimensions set forth are approximate.

60 SECOND AVENUE

EAST VILLAGE, NYC | Between East 3rd and 4th Streets

RESTAURANT FOR LEASE

The map displays a grid of streets: Broadway, Lafayette Street, Third Avenue, and Second Avenue running north-south; and East 3rd Street, East 4th Street, East 5th Street, East 6th Street, and East 7th Street running east-west. A large blue speech bubble is positioned on Second Avenue, between East 4th and East 5th Streets, containing the text "60 SECOND AVENUE".

NEIGHBORS

JAMES FAMULARO
President

GREG GOLDBERG
Senior Director
646.780.4904
ggoldberg@meridiancapital.com



MERIDIAN
RETAIL LEASING

All information supplied is from sources deemed reliable and is furnished subject to errors, omissions, modifications, removal of the listing from sale or lease, and to any listing conditions, including the rates and manner of payment of commissions for particular offerings imposed by Meridian Capital Group. This information may include estimates and projections prepared by Meridian Capital Group with respect to future events, and these future events may or may not actually occur. Such estimates and projections reflect various assumptions concerning anticipated results. While Meridian Capital Group believes these assumptions are reasonable, there can be no assurance that any of these estimates and projections will be correct. Therefore, actual results may vary materially from these estimates and projections. Any square footage dimensions set forth are approximate.