

451

FULTON STREET DOWNTOWN BROOKLYN

Between Jay & Willoughby Streets

RETAIL FOR LEASE

APPROXIMATE SIZE

Ground Floor: 2,000 SF
2nd-4th Floor: 1,000 SF Each
Lower Level: 2,000 SF

ASKING RENT

Upon Request

POSSESSION

Immediate

TERM

Negotiable

FRONTAGE

20 FT

COMMENTS

- Full building for lease
- Located off the corner of Fulton and Jay Streets with heavy retail and foot traffic
- Close proximity to Barclays Center, Fulton Mall, and major subways
- Façade can be fully renovated, additional windows, or space for signage can be easily be built

NEIGHBORS

Raising Cane's • Game Stop • GAP • Banana Republic • Macy's • H&M • Adidas • CAVA • Panera • Rumble Boxing • Chopt • Solidcore

TRANSPORTATION

2 3 B D F N Q R 5 G A

JAMES FAMULARO

President

JOHN ROESCH

Director
212.468.5971
jroesch@meridiancapital.com

CARSON SHAHRABANI

Associate
212.468.5927
cshahrabani@meridiancapital.com

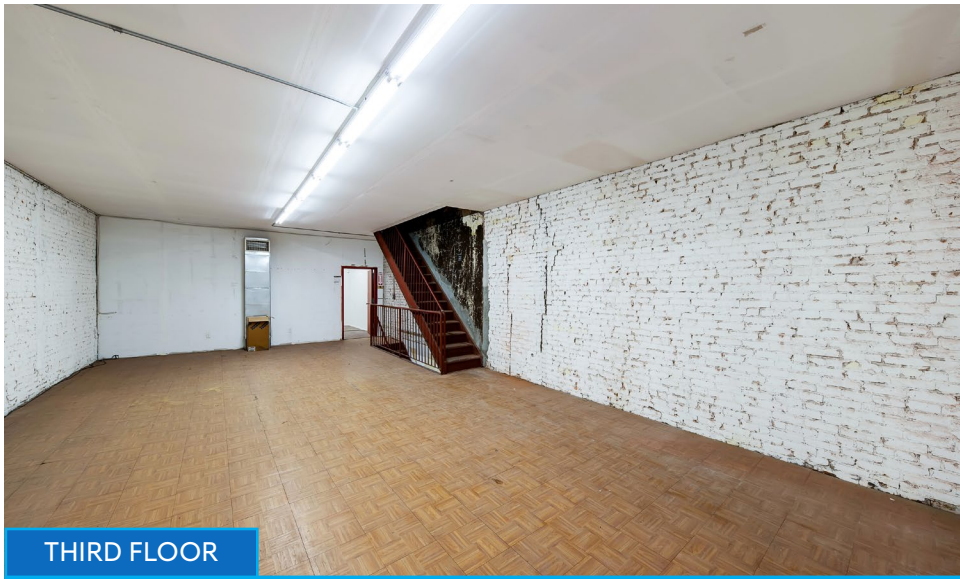
FLAGSHIP BUILDING FOR LEASE

John Roesch
212.468.5971
Carson Shahrabani
212.468.5927

 MERIDIAN
RETAIL LEASING



MERIDIAN
RETAIL LEASING



INTERIOR

JAMES FAMULARO
President

JOHN ROESCH
Director
212.468.5971
jroesch@meridiancapital.com

CARSON SHAHRABANI
Associate
212.468.5927
cshahrabani@meridiancapital.com



MERIDIAN
RETAIL LEASING

451 FULTON STREET

DOWNTOWN BROOKLYN | Between Jay and Willoughby Streets

RETAIL FOR LEASE



NEIGHBORS

JAMES FAMULARO
President

JOHN ROESCH
Director
212.468.5971
jroesch@meridiancapital.com

CARSON SHAHRABANI
Associate
212.468.5927
cshahrabani@meridiancapital.com



MERIDIAN
RETAIL LEASING

All information supplied is from sources deemed reliable and is furnished subject to errors, omissions, modifications, removal of the listing from sale or lease, and to any listing conditions, including the rates and manner of payment of commissions for particular offerings imposed by Meridian Capital Group. This information may include estimates and projections prepared by Meridian Capital Group with respect to future events, and these future events may or may not actually occur. Such estimates and projections reflect various assumptions concerning anticipated results. While Meridian Capital Group believes these assumptions are reasonable, there can be no assurance that any of these estimates and projections will be correct. Therefore, actual results may vary materially from these estimates and projections. Any square footage dimensions set forth are approximate.