

350

EAST 116TH STREET
EAST HARLEM, NYC

Between First & Second Avenues

RESTAURANT FOR LEASE

APPROXIMATE SIZE

Ground Floor: 300 SF

ASKING RENT

\$4,000/Month

POSSESSION

Immediate

TERM

5-10 Years

FRONTAGE

10 FT

COMMENTS

- Former "El Mango Loko"
- Built-out restaurant in white-box condition
- ADA compliant bathroom
- Basement option available
- Heavy foot traffic

NEIGHBORS

Costco • Marshalls • Burlington • Planet Fitness
• Rao's • Bob's Discount Furniture • Shell • Patsy's
Pizzeria • Wendy's • Cherry Valley Marketplace

TRANSPORTATION

6



PROPERTY INFORMATION

JAMES FAMULARO

President

ALEC NAMDAR

Associate
212.468.5915

anamdar@meridiancapital.com

DANIEL SHARGA

Associate
212.468.5976

dsharga@meridiancapital.com

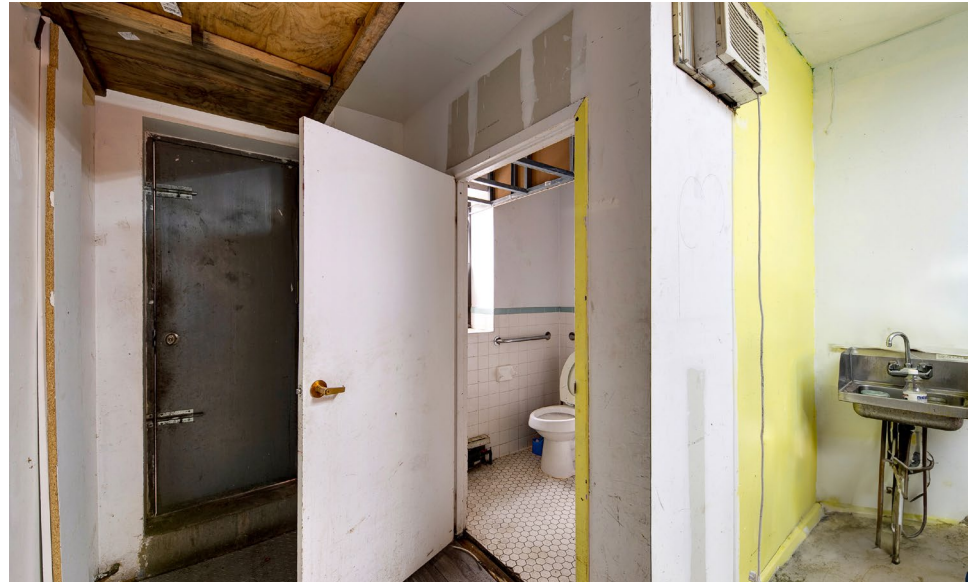


MERIDIAN
RETAIL LEASING

All information supplied is from sources deemed reliable and is furnished subject to errors, omissions, modifications, removal of the listing from sale or lease, and to any listing conditions, including the rates and manner of payment of commissions for particular offerings imposed by Meridian Capital Group. This information may include estimates and projections prepared by Meridian Capital Group with respect to future events, and these future events may or may not actually occur. Such estimates and projections reflect various assumptions concerning anticipated results. While Meridian Capital Group believes these assumptions are reasonable, there can be no assurance that any of these estimates and projections will be correct. Therefore, actual results may vary materially from these estimates and projections. Any square footage dimensions set forth are approximate.

350 EAST 116TH STREET
EAST HARLEM, NYC | Between First and Second Avenues

RESTAURANT FOR LEASE



INTERIOR

JAMES FAMULARO
President

ALEC NAMDAR
Associate
212.468.5915
anamdar@meridiancapital.com

DANIEL SHARGA
Associate
212.468.5976
dsharga@meridiancapital.com



MERIDIAN
RETAIL LEASING

All information supplied is from sources deemed reliable and is furnished subject to errors, omissions, modifications, removal of the listing from sale or lease, and to any listing conditions, including the rates and manner of payment of commissions for particular offerings imposed by Meridian Capital Group. This information may include estimates and projections prepared by Meridian Capital Group with respect to future events, and these future events may or may not actually occur. Such estimates and projections reflect various assumptions concerning anticipated results. While Meridian Capital Group believes these assumptions are reasonable, there can be no assurance that any of these estimates and projections will be correct. Therefore, actual results may vary materially from these estimates and projections. Any square footage dimensions set forth are approximate.

350 EAST 116TH STREET
 EAST HARLEM, NYC | Between First and Second Avenues

RESTAURANT FOR LEASE



NEIGHBORS

JAMES FAMULARO
 President

ALEC NAMDAR
 Associate
 212.468.5915
 anamdard@meridiancapital.com

DANIEL SHARGA
 Associate
 212.468.5976
 dsharga@meridiancapital.com



MERIDIAN
 RETAIL LEASING

All information supplied is from sources deemed reliable and is furnished subject to errors, omissions, modifications, removal of the listing from sale or lease, and to any listing conditions, including the rates and manner of payment of commissions for particular offerings imposed by Meridian Capital Group. This information may include estimates and projections prepared by Meridian Capital Group with respect to future events, and these future events may or may not actually occur. Such estimates and projections reflect various assumptions concerning anticipated results. While Meridian Capital Group believes these assumptions are reasonable, there can be no assurance that any of these estimates and projections will be correct. Therefore, actual results may vary materially from these estimates and projections. Any square footage dimensions set forth are approximate.