

323

EAST 108TH STREET EAST HARLEM, NYC

Between First & Second Avenues

RETAIL/OFFICE FOR LEASE

APPROXIMATE SIZE

760 SF + Basement

ASKING RENT

\$4,500/Month

POSSESSION

Immediate

TERM

5-15 Years

FRONTAGE

20 FT

COMMENTS

- Gorgeous space in white-box condition with tin ceilings
- Will be delivered in clean condition
- Ideal for office or retail
- Close proximity to dense residential and transportation

NEIGHBORS

Papa John's • Ollin • Janie's Life Changing Baked Goods • Amma Grill • Dunkin' • Benjamin Moore • Domino's Pizza • Robust Shawarma

TRANSPORTATION

6



PROPERTY INFORMATION

JAMES FAMULARO
President

DANE HARLOWE
Director
212.468.5966
dharlowe@meridiancapital.com

ALEC NAMDAR
Associate
212.468.5915
anamdar@meridiancapital.com

NOAM AZIZ
Associate
212.468.5984
naziz@meridiancapital.com

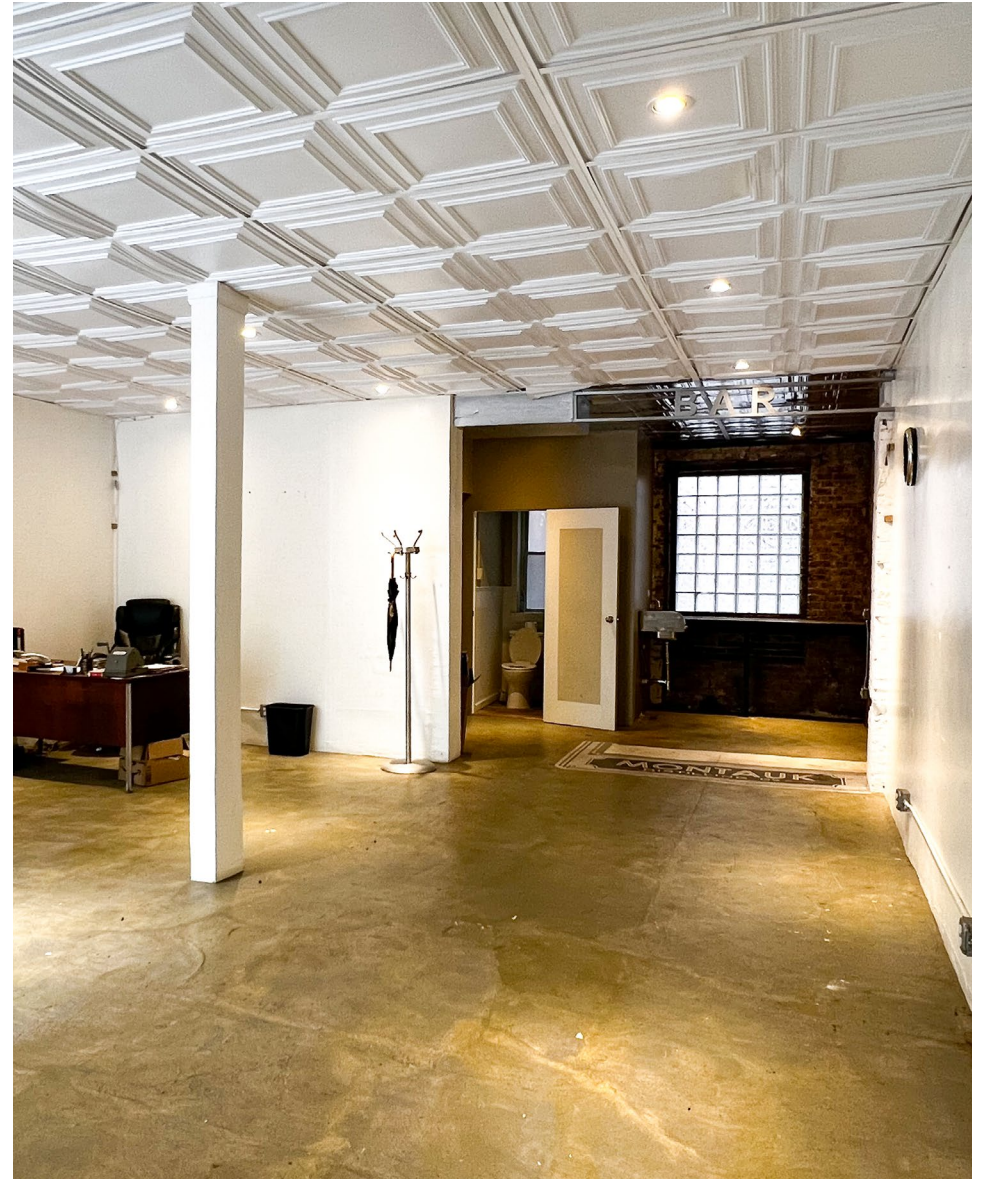


MERIDIAN
RETAIL LEASING

All information supplied is from sources deemed reliable and is furnished subject to errors, omissions, modifications, removal of the listing from sale or lease, and to any listing conditions, including the rates and manner of payment of commissions for particular offerings imposed by Meridian Capital Group. This information may include estimates and projections prepared by Meridian Capital Group with respect to future events, and these future events may or may not actually occur. Such estimates and projections reflect various assumptions concerning anticipated results. While Meridian Capital Group believes these assumptions are reasonable, there can be no assurance that any of these estimates and projections will be correct. Therefore, actual results may vary materially from these estimates and projections. Any square footage dimensions set forth are approximate.

323 EAST 108TH STREET
EAST HARLEM, NYC | Between First and Second Avenues

RETAIL/OFFICE FOR LEASE



INTERIOR

JAMES FAMULARO
President

DANE HARLOWE
Director
212.468.5966
dharlowe@meridiancapital.com

ALEC NAMDAR
Associate
212.468.5915
anamdar@meridiancapital.com

NOAM AZIZ
Associate
212.468.5984
naziz@meridiancapital.com



MERIDIAN
RETAIL LEASING

All information supplied is from sources deemed reliable and is furnished subject to errors, omissions, modifications, removal of the listing from sale or lease, and to any listing conditions, including the rates and manner of payment of commissions for particular offerings imposed by Meridian Capital Group. This information may include estimates and projections prepared by Meridian Capital Group with respect to future events, and these future events may or may not actually occur. Such estimates and projections reflect various assumptions concerning anticipated results. While Meridian Capital Group believes these assumptions are reasonable, there can be no assurance that any of these estimates and projections will be correct. Therefore, actual results may vary materially from these estimates and projections. Any square footage dimensions set forth are approximate.

323 EAST 108TH STREET
 EAST HARLEM, NYC | Between First and Second Avenues

RETAIL/OFFICE FOR LEASE

NEIGHBORS

THIRD AVENUE | **SECOND AVENUE** | **FIRST AVENUE**

E 110TH STREET

E 109TH STREET

E 108TH STREET

E 107TH STREET

323 EAST 108TH STREET

Amor Cubano
Pee Dee Steak House

Mr Sulis Gourmet Deli Corporation
Domino's Pizza
P.S. 083 Luis Munoz Rivera
Paqueteria Mexicana
Sky Dragon
Anabelle Deli & Grocery

Aroma Coffee Shop
Las Panteras Negras
CASCALOTE
Restaurant Aguirre

THE JOURNEY CHURCH · NYC
LA TROPEZIENNE
Boulangerie · Pâtisserie · Viennoiserie
Luna Food Market Corp.
AMMA GRILL

New York Public Library
citi bike.

Benjamin Moore®
Junior High School 117
CHASE

East Harlem Pizza
DUNKIN'

La Amisad
citi bike.

Janie's
ROBUST TAWANNAH
Ellen's Bites
Ollin

JAMES FAMULARO
 President

DANE HARLOWE
 Director
 212.468.5966
 dharlowe@meridiancapital.com

ALEC NAMDAR
 Associate
 212.468.5915
 anamdar@meridiancapital.com

NOAM AZIZ
 Associate
 212.468.5984
 naziz@meridiancapital.com



MERIDIAN
 RETAIL LEASING

All information supplied is from sources deemed reliable and is furnished subject to errors, omissions, modifications, removal of the listing from sale or lease, and to any listing conditions, including the rates and manner of payment of commissions for particular offerings imposed by Meridian Capital Group. This information may include estimates and projections prepared by Meridian Capital Group with respect to future events, and these future events may or may not actually occur. Such estimates and projections reflect various assumptions concerning anticipated results. While Meridian Capital Group believes these assumptions are reasonable, there can be no assurance that any of these estimates and projections will be correct. Therefore, actual results may vary materially from these estimates and projections. Any square footage dimensions set forth are approximate.