

286

BROOME STREET LOWER EAST SIDE, NYC

Between Eldridge & Allen Streets

RETAIL FOR LEASE



APPROXIMATE SIZE

Lower Level: 1,000 SF

ASKING RENT

Upon Request

POSSESSION

Immediate

TERM

Negotiable

FRONTAGE

20 FT

COMMENTS

- Space is in clean white-box condition
- Certificate of Occupancy in place for Restaurant and Cabaret
- Located within steps from the best bars and restaurants in the Lower East Side
- Landlord will consider a percentage of sales deal

NEIGHBORS

Double Chicken Please • Ludlow House • Beauty & Essex • Attaboy • Pianos • Hair of the Dog • Mr. Purple • Sweet Chick • Equinox Orchard Street • 7th Street Burger • Russ & Daughters • Extra Butter

TRANSPORTATION



PROPERTY INFORMATION

JAMES FAMULARO

President

JOHN ROESCH

Director
212.468.5971
jroesch@meridiancapital.com

GARRETT KELLY

Director
212.468.5939
gkelly@meridiancapital.com



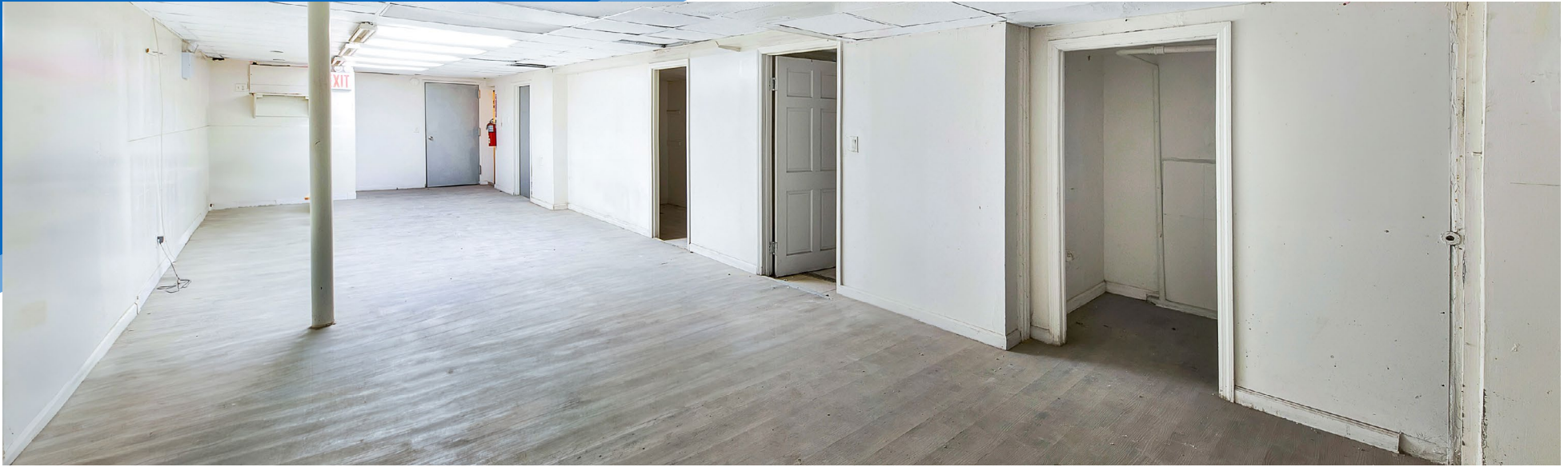
MERIDIAN RETAIL LEASING

All information supplied is from sources deemed reliable and is furnished subject to errors, omissions, modifications, removal of the listing from sale or lease, and to any listing conditions, including the rates and manner of payment of commissions for particular offerings imposed by Meridian Capital Group. This information may include estimates and projections prepared by Meridian Capital Group with respect to future events, and these future events may or may not actually occur. Such estimates and projections reflect various assumptions concerning anticipated results. While Meridian Capital Group believes these assumptions are reasonable, there can be no assurance that any of these estimates and projections will be correct. Therefore, actual results may vary materially from these estimates and projections. Any square footage dimensions set forth are approximate.

286 BROOME STREET

LOWER EAST SIDE, NYC | Between Eldridge and Allen Streets

RETAIL FOR LEASE



INTERIOR

JAMES FAMULARO
President

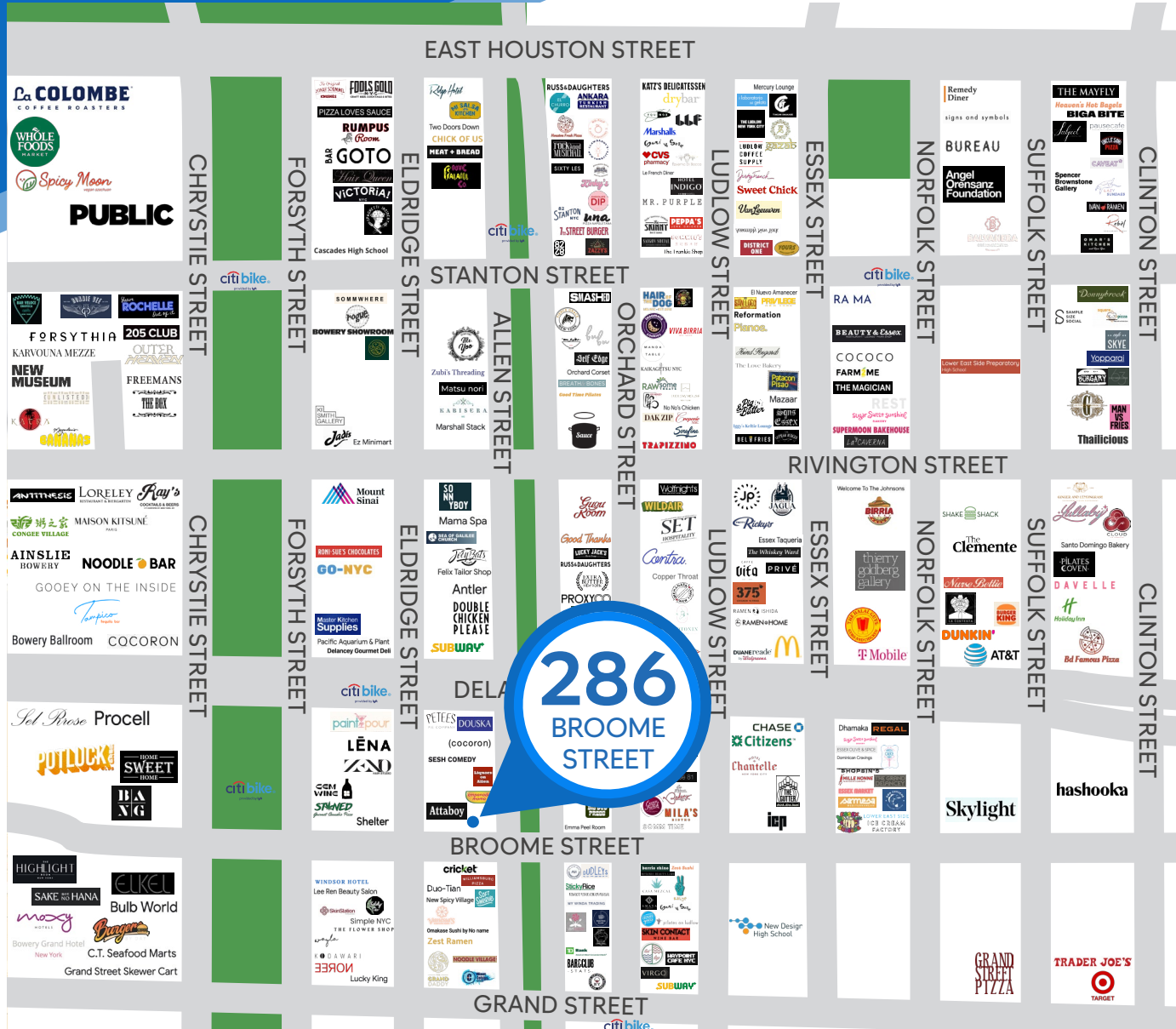
JOHN ROESCH
Director
212.468.5971
jroesch@meridiancapital.com

GARRETT KELLY
Director
212.468.5939
gkelly@meridiancapital.com



MERIDIAN
RETAIL LEASING

All information supplied is from sources deemed reliable and is furnished subject to errors, omissions, modifications, removal of the listing from sale or lease, and to any listing conditions, including the rates and manner of payment of commissions for particular offerings imposed by Meridian Capital Group. This information may include estimates and projections prepared by Meridian Capital Group with respect to future events, and these future events may or may not actually occur. Such estimates and projections reflect various assumptions concerning anticipated results. While Meridian Capital Group believes these assumptions are reasonable, there can be no assurance that any of these estimates and projections will be correct. Therefore, actual results may vary materially from these estimates and projections. Any square footage dimensions set forth are approximate.



NEIGHBORS

JAMES FAMULARO
President

JOHN ROESCH
Director
212.468.5971
jroesch@meridiancapital.com

GARRETT KELLY
Director
212.468.5939
gkelly@meridiancapital.com



MERIDIAN
RETAIL LEASING

All information supplied is from sources deemed reliable and is furnished subject to errors, omissions, modifications, removal of the listing from sale or lease, and to any listing conditions, including the rates and manner of payment of commissions for particular offerings imposed by Meridian Capital Group. This information may include estimates and projections prepared by Meridian Capital Group with respect to future events, and these future events may or may not actually occur. Such estimates and projections reflect various assumptions concerning anticipated results. While Meridian Capital Group believes these assumptions are reasonable, there can be no assurance that any of these estimates and projections will be correct. Therefore, actual results may vary materially from these estimates and projections. Any square footage dimensions set forth are approximate.