

2500

BARKER AVENUE

ALLERTON, BRONX

Corner of Barker & Mace Avenues

COMMUNITY FACILITY FOR LEASE

APPROXIMATE SIZE

Second Floor: 9,328 SF

ASKING RENT

\$35 PSF

POSSESSION

Arranged

TERM

10-20 Years

COMMENTS

- Second floor available in a brand-new luxury development
- Elevator access directly to second floor
- Entrances on both Barker and Mace Avenues
- Steps from Bronx Park and Allerton Avenue Station

NEIGHBORS

Dunkin' • Key Food • Metro by T-Mobile • Service Q • Celestial Essentials • Hong Kong Restaurant • McDonald's • Bank of America • Golden Krust • Public School 96 • Classic Barbershop

TRANSPORTATION

2 5

Bx39



PROPERTY INFORMATION

JAMES FAMULARO

President
646.658.7373
jfamularo@meridiancapital.com

BOBBY ORTENSE

Associate
212.468.5953
bortense@meridiancapital.com

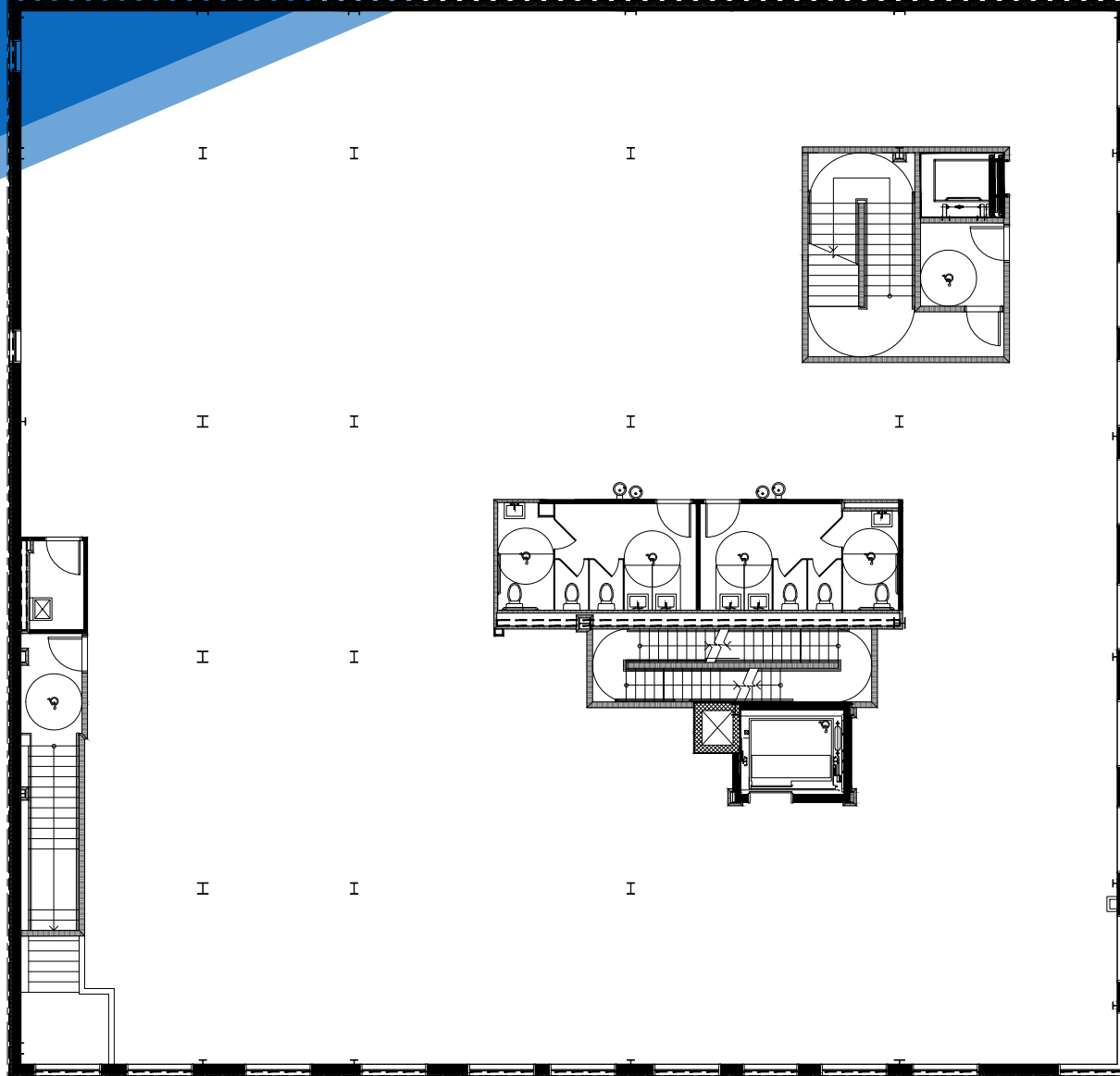
MYLES VANDELL

Associate
212.468.5975
mvandell@meridiancapital.com



MERIDIAN
RETAIL LEASING

All information supplied is from sources deemed reliable and is furnished subject to errors, omissions, modifications, removal of the listing from sale or lease, and to any listing conditions, including the rates and manner of payment of commissions for particular offerings imposed by Meridian Capital Group. This information may include estimates and projections prepared by Meridian Capital Group with respect to future events, and these future events may or may not actually occur. Such estimates and projections reflect various assumptions concerning anticipated results. While Meridian Capital Group believes these assumptions are reasonable, there can be no assurance that any of these estimates and projections will be correct. Therefore, actual results may vary materially from these estimates and projections. Any square footage dimensions set forth are approximate.



JAMES FAMULARO

President
646.658.7373
jfamularo@meridiancapital.com

BOBBY ORTENSE

Associate
212.468.5953
bortense@meridiancapital.com

MYLES VANDELL

Associate
212.468.5975
mvandell@meridiancapital.com



MERIDIAN
RETAIL LEASING

2500 BARKER AVENUE

ALLERTON, BRONX | Corner of Barker and Mace Avenues

COMMUNITY FACILITY FOR LEASE



JAMES FAMULARO

President
646.658.7373
jfamularo@meridiancapital.com

BOBBY ORTENSE

Associate
212.468.5953
bortense@meridiancapital.com

MYLES VANDELL

Associate
212.468.5975
mvandell@meridiancapital.com



MERIDIAN
RETAIL LEASING

All information supplied is from sources deemed reliable and is furnished subject to errors, omissions, modifications, removal of the listing from sale or lease, and to any listing conditions, including the rates and manner of payment of commissions for particular offerings imposed by Meridian Capital Group. This information may include estimates and projections prepared by Meridian Capital Group with respect to future events, and these future events may or may not actually occur. Such estimates and projections reflect various assumptions concerning anticipated results. While Meridian Capital Group believes these assumptions are reasonable, there can be no assurance that any of these estimates and projections will be correct. Therefore, actual results may vary materially from these estimates and projections. Any square footage dimensions set forth are approximate.