

123

WASHINGTON STREET NORWALK, CONNECTICUT

Between North Main & North Water Streets

RETAIL FOR LEASE

APPROXIMATE SIZE

Ground Floor: 4,637 SF
Basement: 3,257 SF

ASKING RENT

Upon Request

POSSESSION

Immediate

TERM

Negotiable

FRONTAGE

28 FT

COMMENTS

- Built-out gallery with large glass frontage providing natural light
- Columns can be removed
- 2 municipal parking lots/garages nearby
- Located in the heart of historic Washington Street District
- All uses considered

NEIGHBORS

Oishi • Donovan's • Sono Harbor Deli & Café • Salon être • Mecha • Braach's Flowers • Public Wine Bar • Los Romolines • The Whale Tea • El Rancho Restaurant • Posh Nail Salon



PROPERTY INFORMATION

JAMES FAMULARO

President

BEN BIBERAJ

Senior Director
703.434.1461

bbiberaj@meridiancapital.com

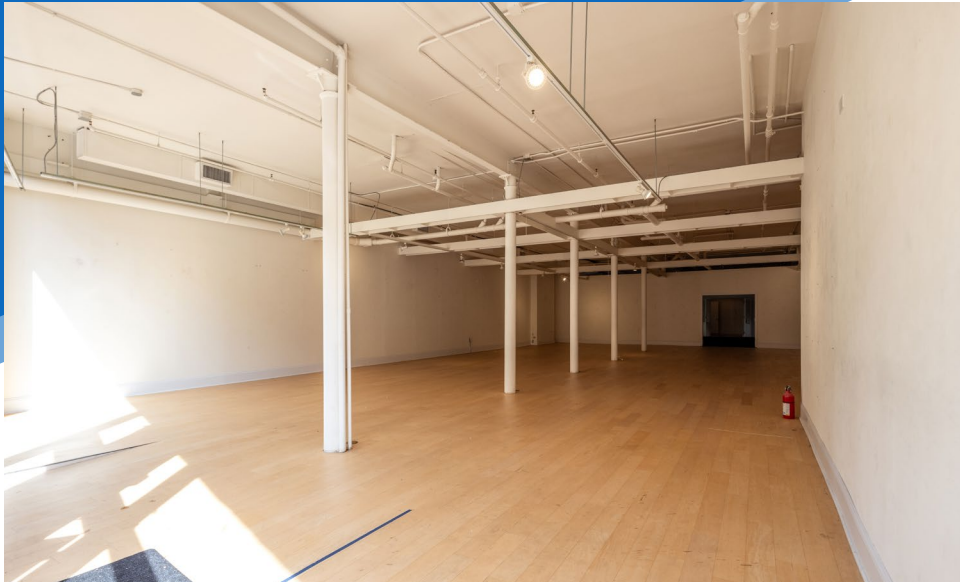
DESI AVIDANE

Associate
212.468.5990

davidane@meridiancapital.com



All information supplied is from sources deemed reliable and is furnished subject to errors, omissions, modifications, removal of the listing from sale or lease, and to any listing conditions, including the rates and manner of payment of commissions for particular offerings imposed by Meridian Capital Group. This information may include estimates and projections prepared by Meridian Capital Group with respect to future events, and these future events may or may not actually occur. Such estimates and projections reflect various assumptions concerning anticipated results. While Meridian Capital Group believes these assumptions are reasonable, there can be no assurance that any of these estimates and projections will be correct. Therefore, actual results may vary materially from these estimates and projections. Any square footage dimensions set forth are approximate.



INTERIOR

JAMES FAMULARO
President

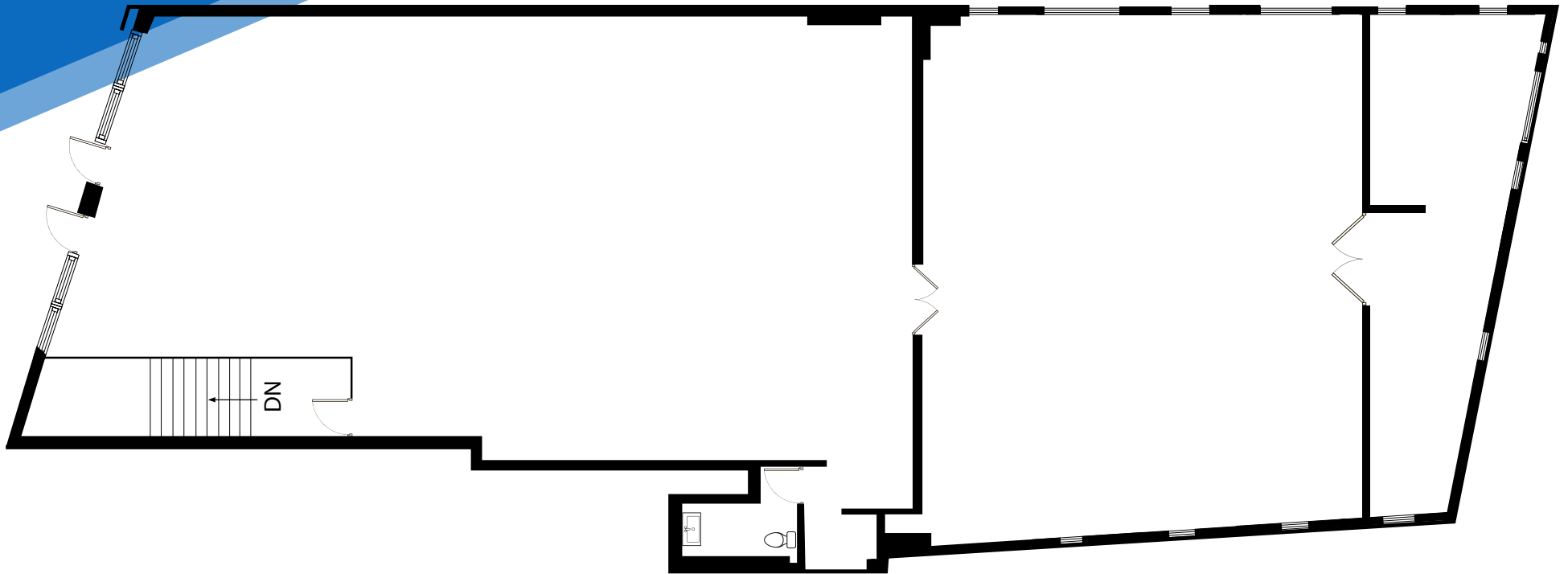
BEN BIBERAJ
Senior Director
703.434.1461
bbiberaj@meridiancapital.com

DESI AVIDANE
Associate
212.468.5990
davidane@meridiancapital.com



123 WASHINGTON STREET
NORWALK, CONNECTICUT | Between North Main and Water Streets

RETAIL FOR LEASE



FLOOR PLAN

JAMES FAMULARO
President

BEN BIBERAJ
Senior Director
703.434.1461
bbiberaj@meridiancapital.com

DESI AVIDANE
Associate
212.468.5990
davidane@meridiancapital.com



All information supplied is from sources deemed reliable and is furnished subject to errors, omissions, modifications, removal of the listing from sale or lease, and to any listing conditions, including the rates and manner of payment of commissions for particular offerings imposed by Meridian Capital Group. This information may include estimates and projections prepared by Meridian Capital Group with respect to future events, and these future events may or may not actually occur. Such estimates and projections reflect various assumptions concerning anticipated results. While Meridian Capital Group believes these assumptions are reasonable, there can be no assurance that any of these estimates and projections will be correct. Therefore, actual results may vary materially from these estimates and projections. Any square footage dimensions set forth are approximate.

123 WASHINGTON STREET

NORWALK, CONNECTICUT | Between North Main and Water Streets

RETAIL FOR LEASE



NEIGHBORS

JAMES FAMULARO
President

BEN BIBERAJ
Senior Director
703.434.1461
bbiberaj@meridiancapital.com

DESI AVIDANE
Associate
212.468.5990
davidane@meridiancapital.com



All information supplied is from sources deemed reliable and is furnished subject to errors, omissions, modifications, removal of the listing from sale or lease, and to any listing conditions, including the rates and manner of payment of commissions for particular offerings imposed by Meridian Capital Group. This information may include estimates and projections prepared by Meridian Capital Group with respect to future events, and these future events may or may not actually occur. Such estimates and projections reflect various assumptions concerning anticipated results. While Meridian Capital Group believes these assumptions are reasonable, there can be no assurance that any of these estimates and projections will be correct. Therefore, actual results may vary materially from these estimates and projections. Any square footage dimensions set forth are approximate.