

# 1156

SECOND AVENUE  
UPPER EAST SIDE, NYC

Between East 60<sup>th</sup> & 61<sup>st</sup> Streets

RETAIL FOR LEASE



#### APPROXIMATE SIZE

Ground Floor: 1,400 SF  
Lower Level: 800 SF

#### ASKING RENT

\$14,000/Month

#### POSSESSION

Arranged

#### TERM

10-15 Years

#### FRONTAGE

18 FT

#### COMMENTS

- Newly renovated retail space
- Natural light
- ADA restroom in place

#### NEIGHBORS

Serendipity 3 • Patsy's Pizzeria • My Gym •  
Matto • Chipotle • Mattress Firm • Crunch  
Fitness • Bloomingdale's • Plump • Sunglass  
Hut • Hawa Smoothie • Orange Theory

#### TRANSPORTATION

4 5 6 N R W

PROPERTY INFORMATION

#### JAMES FAMULARO

President  
646.658.7373  
jfamularo@meridiancapital.com

#### JACOB MAYER

Associate  
212.468.5926  
jmayer@meridiancapital.com

#### COLE KLEPPINGER

Associate  
212.468.5993  
ckleppinger@meridiancapital.com



All information supplied is from sources deemed reliable and is furnished subject to errors, omissions, modifications, removal of the listing from sale or lease, and to any listing conditions, including the rates and manner of payment of commissions for particular offerings imposed by Meridian Capital Group. This information may include estimates and projections prepared by Meridian Capital Group with respect to future events, and these future events may or may not actually occur. Such estimates and projections reflect various assumptions concerning anticipated results. While Meridian Capital Group believes these assumptions are reasonable, there can be no assurance that any of these estimates and projections will be correct. Therefore, actual results may vary materially from these estimates and projections. Any square footage dimensions set forth are approximate.

# 1156 SECOND AVENUE

UPPER EAST SIDE, NYC | Between East 60<sup>th</sup> and 61<sup>st</sup> Streets

RETAIL FOR LEASE



INTERIOR

## JAMES FAMULARO

President  
646.658.7373  
jfamularo@meridiancapital.com

## JACOB MAYER

Associate  
212.468.5926  
jmayer@meridiancapital.com

## COLE KLEPPINGER

Associate  
212.468.5993  
ckleppinger@meridiancapital.com



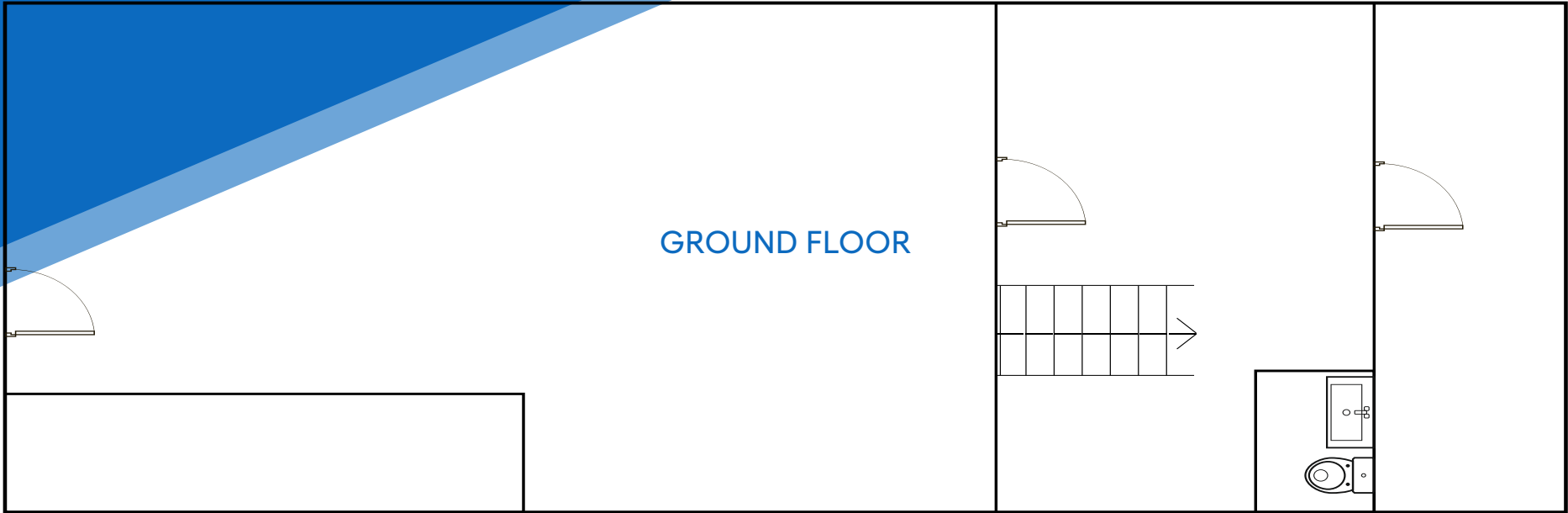
All information supplied is from sources deemed reliable and is furnished subject to errors, omissions, modifications, removal of the listing from sale or lease, and to any listing conditions, including the rates and manner of payment of commissions for particular offerings imposed by Meridian Capital Group. This information may include estimates and projections prepared by Meridian Capital Group with respect to future events, and these future events may or may not actually occur. Such estimates and projections reflect various assumptions concerning anticipated results. While Meridian Capital Group believes these assumptions are reasonable, there can be no assurance that any of these estimates and projections will be correct. Therefore, actual results may vary materially from these estimates and projections. Any square footage dimensions set forth are approximate.

# 1156 SECOND AVENUE

UPPER EAST SIDE, NYC | Between East 60<sup>th</sup> and 61<sup>st</sup> Streets

RETAIL FOR LEASE

FLOOR PLAN  
SECOND AVENUE



### JAMES FAMULARO

President  
646.658.7373  
jfamularo@meridiancapital.com

### JACOB MAYER

Associate  
212.468.5926  
jmayer@meridiancapital.com

### COLE KLEPPINGER

Associate  
212.468.5993  
ckleppinger@meridiancapital.com



All information supplied is from sources deemed reliable and is furnished subject to errors, omissions, modifications, removal of the listing from sale or lease, and to any listing conditions, including the rates and manner of payment of commissions for particular offerings imposed by Meridian Capital Group. This information may include estimates and projections prepared by Meridian Capital Group with respect to future events, and these future events may or may not actually occur. Such estimates and projections reflect various assumptions concerning anticipated results. While Meridian Capital Group believes these assumptions are reasonable, there can be no assurance that any of these estimates and projections will be correct. Therefore, actual results may vary materially from these estimates and projections. Any square footage dimensions set forth are approximate.



LEXINGTON AVENUE

THIRD AVENUE

SECOND AVENUE

NEIGHBORS

**JAMES FAMULARO**  
President  
646.658.7373  
jfamularo@meridiancapital.com

**JACOB MAYER**  
Associate  
212.468.5926  
jmayer@meridiancapital.com

**COLE KLEPPINGER**  
Associate  
212.468.5993  
ckleppinger@meridiancapital.com



All information supplied is from sources deemed reliable and is furnished subject to errors, omissions, modifications, removal of the listing from sale or lease, and to any listing conditions, including the rates and manner of payment of commissions for particular offerings imposed by Meridian Capital Group. This information may include estimates and projections prepared by Meridian Capital Group with respect to future events, and these future events may or may not actually occur. Such estimates and projections reflect various assumptions concerning anticipated results. While Meridian Capital Group believes these assumptions are reasonable, there can be no assurance that any of these estimates and projections will be correct. Therefore, actual results may vary materially from these estimates and projections. Any square footage dimensions set forth are approximate.