

11

AVENUE B EAST VILLAGE, NYC

Between East 2nd & East
Houston Streets

RETAIL FOR LEASE/SUBLEASE



APPROXIMATE SIZE

1,200 SF + Basement

ASKING RENT

~~\$10,995/Month~~ Reduced
\$9,995/Month

POSSESSION

Immediate

TERM

10 Years

FRONTAGE

20 FT

COMMENTS

- Space is in white-box condition
- Heavy foot traffic from Avenue B and Houston Street
- All uses considered

NEIGHBORS

Duane Reade • Shampoo Avenue B • Guidepost
Montessori • Discovery Wines • Cornerstone
Café • Hoffmaier & Hoffmaier PC

TRANSPORTATION

M J Z 4 5 6

M8 M9

PROPERTY INFORMATION

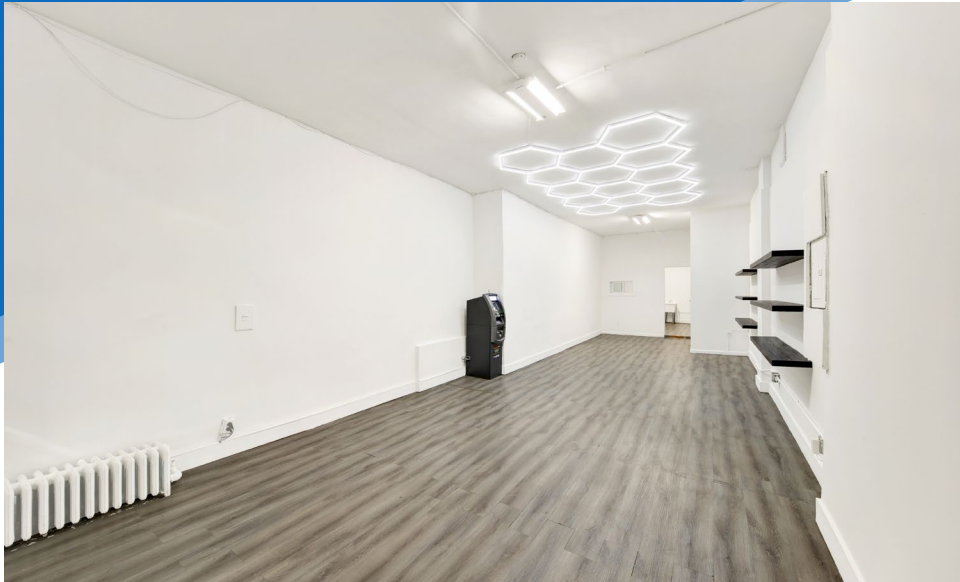
JAMES FAMULARO
President

BEN BIBERAJ
Senior Director
703.434.1461
bbiberaj@meridiancapital.com

ELLIOT WYGODA
Associate
212.468.5968
ewygoda@meridiancapital.com

 **MERIDIAN**
RETAIL LEASING

All information supplied is from sources deemed reliable and is furnished subject to errors, omissions, modifications, removal of the listing from sale or lease, and to any listing conditions, including the rates and manner of payment of commissions for particular offerings imposed by Meridian Capital Group. This information may include estimates and projections prepared by Meridian Capital Group with respect to future events, and these future events may or may not actually occur. Such estimates and projections reflect various assumptions concerning anticipated results. While Meridian Capital Group believes these assumptions are reasonable, there can be no assurance that any of these estimates and projections will be correct. Therefore, actual results may vary materially from these estimates and projections. Any square footage dimensions set forth are approximate.



INTERIOR

JAMES FAMULARO
President

BEN BIBERAJ
Senior Director
703.434.1461
bbiberaj@meridiancapital.com

ELLIOT WYGODA
Associate
212.468.5968
ewygoda@meridiancapital.com



11 AVENUE B

EAST VILLAGE, NYC | Between East 2nd and East Houston Streets

RETAIL FOR LEASE/SUBLEASE

NEIGHBORS



JAMES FAMULARO
President

BEN BIBERAJ
Senior Director
703.434.1461
bbiberaj@meridiancapital.com

ELLIOT WYGODA
Associate
212.468.5968
ewygoda@meridiancapital.com



All information supplied is from sources deemed reliable and is furnished subject to errors, omissions, modifications, removal of the listing from sale or lease, and to any listing conditions, including the rates and manner of payment of commissions for particular offerings imposed by Meridian Capital Group. This information may include estimates and projections prepared by Meridian Capital Group with respect to future events, and these future events may or may not actually occur. Such estimates and projections reflect various assumptions concerning anticipated results. While Meridian Capital Group believes these assumptions are reasonable, there can be no assurance that any of these estimates and projections will be correct. Therefore, actual results may vary materially from these estimates and projections. Any square footage dimensions set forth are approximate.