

2750-2754

FREDERICK DOUGLASS BLVD

SUGAR HILL, NYC

Between West 146th & 147th Streets

COMMUNITY FACILITY FOR LEASE



APPROXIMATE SIZE

~~Space A (Second Floor): 1,030 SF - Leased~~
Space B (Lower Level): 600 SF

ASKING RENT

\$2,500/Month

POSSESSION

Immediate

TERM

Negotiable

COMMENTS

- Newly constructed space
- Bathroom in place
- High residential area

NEIGHBORS

Popeyes • Foodtown • New York Sports Club •
T-Mobile • Dunkin' • KFC • Harlem Children's Zone •
Subway • Charles Pan Fried Chicken • Kensi Thai

TRANSPORTATION

A C B D 3

PROPERTY INFORMATION

JAMES FAMULARO

President

DANE HARLOWE

Director

212.468.5966

dharlowe@meridiancapital.com

DANIEL RACHLINE

Associate

212.468.5956

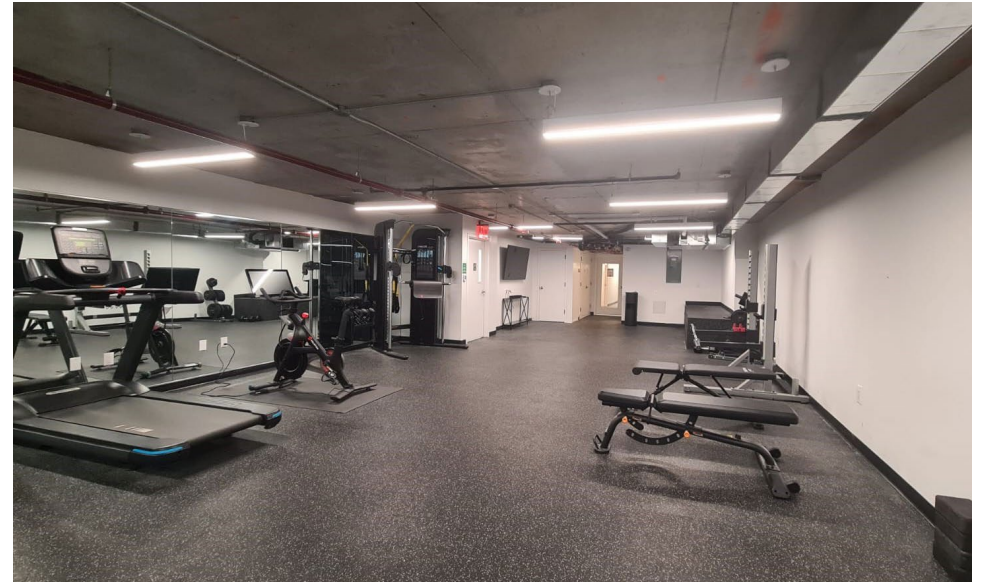
drachline@meridiancapital.com



All information supplied is from sources deemed reliable and is furnished subject to errors, omissions, modifications, removal of the listing from sale or lease, and to any listing conditions, including the rates and manner of payment of commissions for particular offerings imposed by Meridian Capital Group. This information may include estimates and projections prepared by Meridian Capital Group with respect to future events, and these future events may or may not actually occur. Such estimates and projections reflect various assumptions concerning anticipated results. While Meridian Capital Group believes these assumptions are reasonable, there can be no assurance that any of these estimates and projections will be correct. Therefore, actual results may vary materially from these estimates and projections. Any square footage dimensions set forth are approximate.

2750-2754 FREDERICK DOUGLASS BLVD
SUGAR HILL, NYC | Between West 146th and 147th Streets

COMMUNITY FACILITY FOR LEASE



INTERIOR

JAMES FAMULARO
President

DANE HARLOWE
Director
212.468.5966
dharlowe@meridiancapital.com

DANIEL RACHLINE
Associate
212.468.5956
drachline@meridiancapital.com

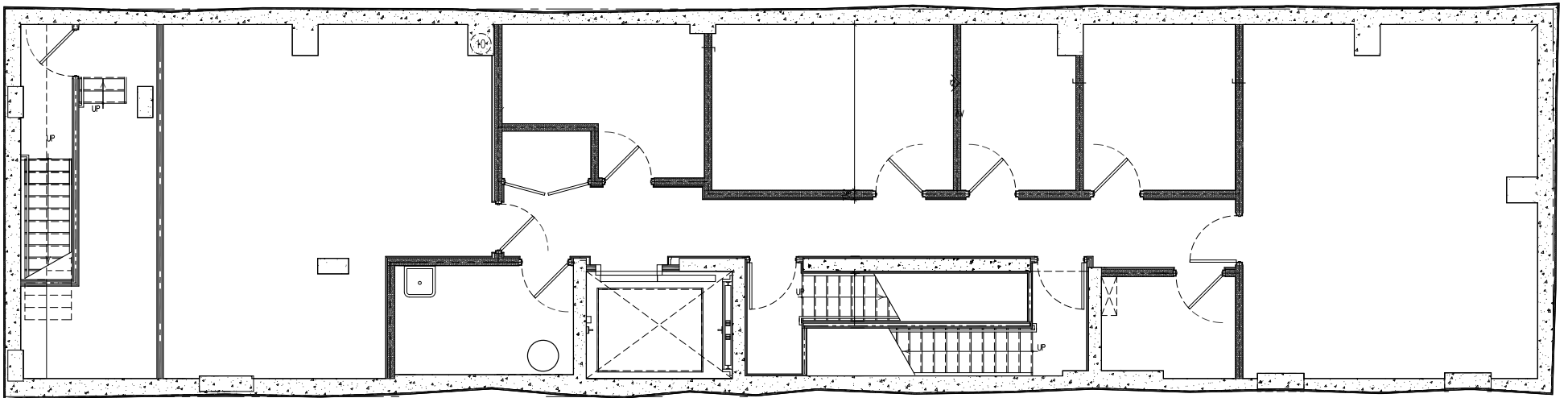


All information supplied is from sources deemed reliable and is furnished subject to errors, omissions, modifications, removal of the listing from sale or lease, and to any listing conditions, including the rates and manner of payment of commissions for particular offerings imposed by Meridian Capital Group. This information may include estimates and projections prepared by Meridian Capital Group with respect to future events, and these future events may or may not actually occur. Such estimates and projections reflect various assumptions concerning anticipated results. While Meridian Capital Group believes these assumptions are reasonable, there can be no assurance that any of these estimates and projections will be correct. Therefore, actual results may vary materially from these estimates and projections. Any square footage dimensions set forth are approximate.

2750-2754 FREDERICK DOUGLASS BLVD
SUGAR HILL, NYC | Between West 146th and 147th Streets

COMMUNITY FACILITY FOR LEASE

FLOOR PLAN | LOWER LEVEL



JAMES FAMULARO
President

DANE HARLOWE
Director
212.468.5966
dharlowe@meridiancapital.com

DANIEL RACHLINE
Associate
212.468.5956
drachline@meridiancapital.com



All information supplied is from sources deemed reliable and is furnished subject to errors, omissions, modifications, removal of the listing from sale or lease, and to any listing conditions, including the rates and manner of payment of commissions for particular offerings imposed by Meridian Capital Group. This information may include estimates and projections prepared by Meridian Capital Group with respect to future events, and these future events may or may not actually occur. Such estimates and projections reflect various assumptions concerning anticipated results. While Meridian Capital Group believes these assumptions are reasonable, there can be no assurance that any of these estimates and projections will be correct. Therefore, actual results may vary materially from these estimates and projections. Any square footage dimensions set forth are approximate.

2750-2754 FREDERICK DOUGLASS BLVD
 SUGAR HILL, NYC | Between West 146th and 147th Streets

COMMUNITY FACILITY FOR LEASE



NEIGHBORS

JAMES FAMULARO
 President

DANE HARLOWE
 Director
 212.468.5966
 dharlowe@meridiancapital.com

DANIEL RACHLINE
 Associate
 212.468.5956
 drachline@meridiancapital.com



All information supplied is from sources deemed reliable and is furnished subject to errors, omissions, modifications, removal of the listing from sale or lease, and to any listing conditions, including the rates and manner of payment of commissions for particular offerings imposed by Meridian Capital Group. This information may include estimates and projections prepared by Meridian Capital Group with respect to future events, and these future events may or may not actually occur. Such estimates and projections reflect various assumptions concerning anticipated results. While Meridian Capital Group believes these assumptions are reasonable, there can be no assurance that any of these estimates and projections will be correct. Therefore, actual results may vary materially from these estimates and projections. Any square footage dimensions set forth are approximate.