

275

SOUTH 2ND STREET WILLIAMSBURG, BROOKLYN

Between Marcy Avenue & Havemeyer Street

RETAIL/RESTAURANT FOR LEASE

APPROXIMATE SIZE

2,500 SF

ASKING RENT

\$12,000/Month

POSSESSION

Immediate

TERM

Negotiable

FRONTAGE

25 FT

COMMENTS

- Stand-alone building for lease
- Curb-cut driveway with garage door
- Brand-new HVAC, easily can be vented
- Perfect for fitness or restaurants in one of Williamsburg's most prominent areas

NEIGHBORS

- L'Industrie • Banter • Sauced • Emmy Squared
- Bozu • The Four Horsemen • F45 • Blank Street • Springbone • Fini Pizza • Mizu

TRANSPORTATION

L G M J Z



JAMES FAMULARO
President

KEVIN BISCONTI
Senior Director
212.468.5962
kbisconti@meridiancapital.com

STEPHEN LIGAMBI
Senior Associate
212.468.5985
sligambi@meridiancapital.com

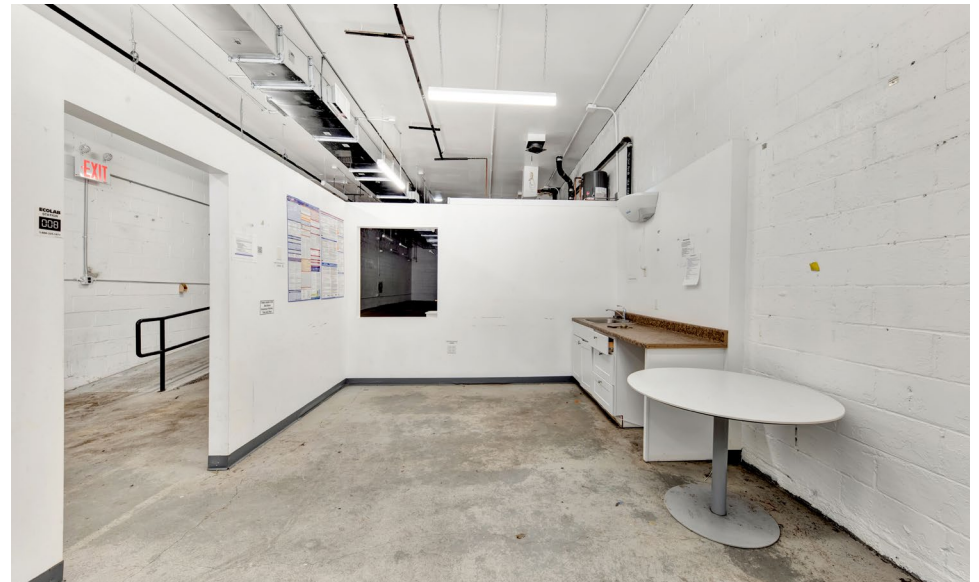
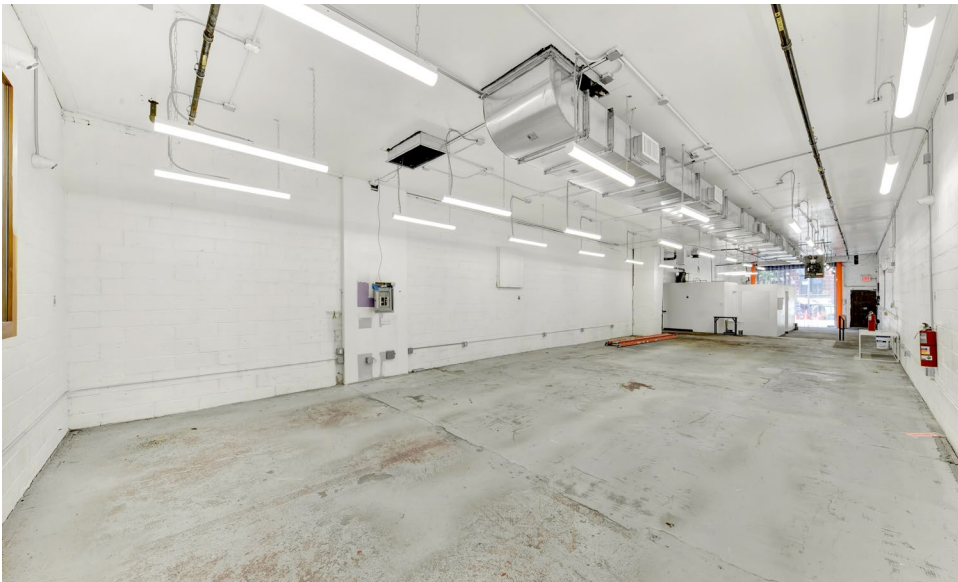
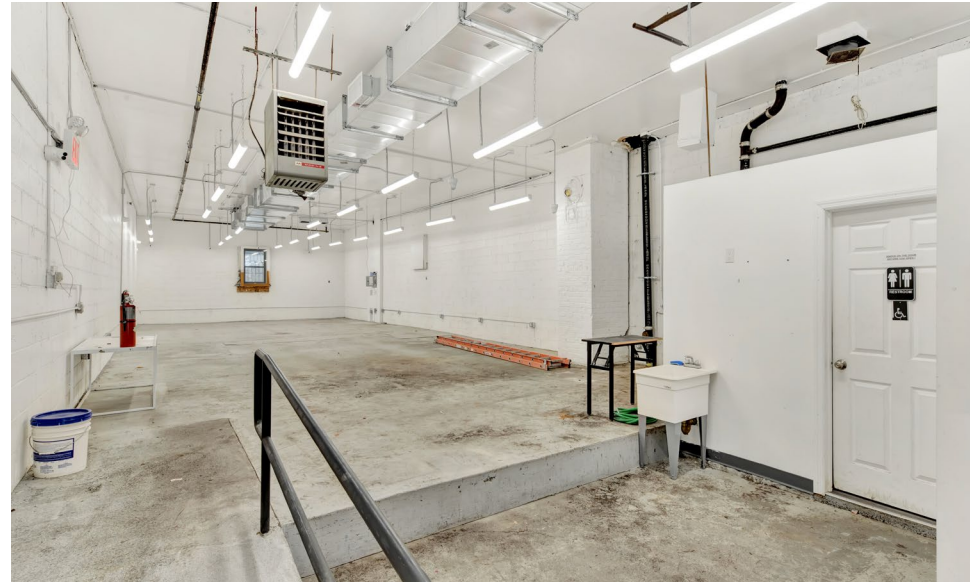


All information supplied is from sources deemed reliable and is furnished subject to errors, omissions, modifications, removal of the listing from sale or lease, and to any listing conditions, including the rates and manner of payment of commissions for particular offerings imposed by Meridian Capital Group. This information may include estimates and projections prepared by Meridian Capital Group with respect to future events, and these future events may or may not actually occur. Such estimates and projections reflect various assumptions concerning anticipated results. While Meridian Capital Group believes these assumptions are reasonable, there can be no assurance that any of these estimates and projections will be correct. Therefore, actual results may vary materially from these estimates and projections. Any square footage dimensions set forth are approximate.

275 SOUTH 2ND STREET

WILLIAMSBURG, BROOKLYN | Between Marcy Avenue & Havemeyer Street

RETAIL/RESTAURANT FOR LEASE



INTERIOR

JAMES FAMULARO
President

KEVIN BISCONTI
Senior Director
212.468.5962
kbisconti@meridiancapital.com

STEPHEN LIGAMBI
Senior Associate
212.468.5985
sligambi@meridiancapital.com



All information supplied is from sources deemed reliable and is furnished subject to errors, omissions, modifications, removal of the listing from sale or lease, and to any listing conditions, including the rates and manner of payment of commissions for particular offerings imposed by Meridian Capital Group. This information may include estimates and projections prepared by Meridian Capital Group with respect to future events, and these future events may or may not actually occur. Such estimates and projections reflect various assumptions concerning anticipated results. While Meridian Capital Group believes these assumptions are reasonable, there can be no assurance that any of these estimates and projections will be correct. Therefore, actual results may vary materially from these estimates and projections. Any square footage dimensions set forth are approximate.

275 SOUTH 2ND STREET

WILLIAMSBURG, BROOKLYN | Between Marcy Avenue & Havemeyer Street

RETAIL/RESTAURANT FOR LEASE



NEIGHBORS

JAMES FAMULARO
President

KEVIN BISCONTI
Senior Director
212.468.5962
kbisconti@meridiancapital.com

STEPHEN LIGAMBI
Senior Associate
212.468.5985
sligambi@meridiancapital.com



All information supplied is from sources deemed reliable and is furnished subject to errors, omissions, modifications, removal of the listing from sale or lease, and to any listing conditions, including the rates and manner of payment of commissions for particular offerings imposed by Meridian Capital Group. This information may include estimates and projections prepared by Meridian Capital Group with respect to future events, and these future events may or may not actually occur. Such estimates and projections reflect various assumptions concerning anticipated results. While Meridian Capital Group believes these assumptions are reasonable, there can be no assurance that any of these estimates and projections will be correct. Therefore, actual results may vary materially from these estimates and projections. Any square footage dimensions set forth are approximate.