

267

WYCKOFF STREET BOERUM HILL, BROOKLYN

Between Nevins Street & 3rd Avenue

RETAIL FOR LEASE

APPROXIMATE SIZE

Space A: 875 SF
Space B: 1,500 SF

ASKING RENT

Space A: \$4,000/Month
Space B: \$3,500/Month

POSSESSION

Immediate

TERM

Negotiable

COMMENTS

- Spaces in close proximity to Barclays Center
- Perfect for small office user
- All uses considered

NEIGHBORS

Barclays Center • Private Yoga Brooklyn • Pizza Secret • Crossfit • Piccola Cucina • Foodtown • Joe Coffee • Tarique • Carvel • Shake Shack • Orange Theory • Chick Fil A • Shell Gas Station

TRANSPORTATION

2 3 4 5 D N Q R



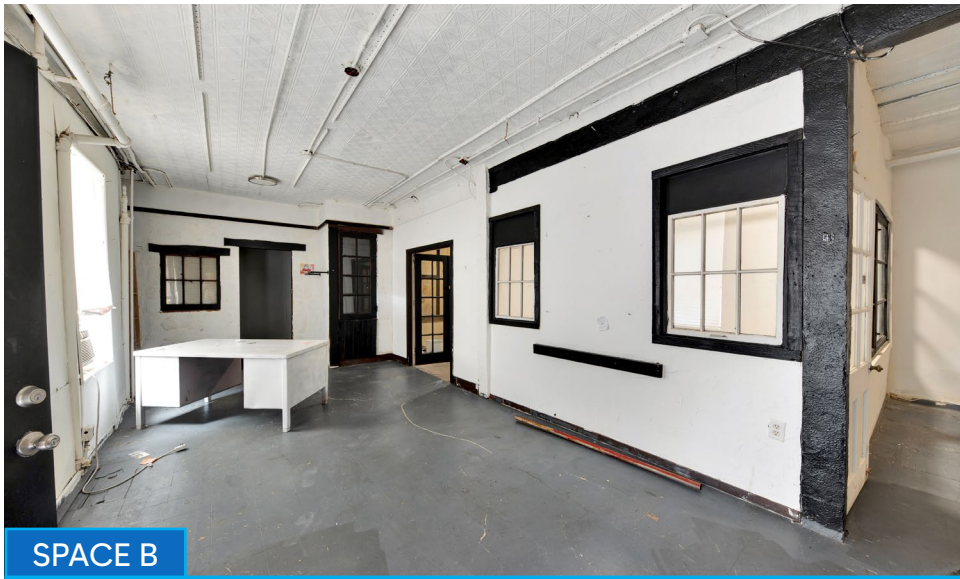
JAMES FAMULARO
President

KEVIN BISCONTI
Director
212.468.5962
kbisconti@meridiancapital.com

STEPHEN LIGAMBI
Associate
212.468.5985
sligambi@meridiancapital.com



All information supplied is from sources deemed reliable and is furnished subject to errors, omissions, modifications, removal of the listing from sale or lease, and to any listing conditions, including the rates and manner of payment of commissions for particular offerings imposed by Meridian Capital Group. This information may include estimates and projections prepared by Meridian Capital Group with respect to future events, and these future events may or may not actually occur. Such estimates and projections reflect various assumptions concerning anticipated results. While Meridian Capital Group believes these assumptions are reasonable, there can be no assurance that any of these estimates and projections will be correct. Therefore, actual results may vary materially from these estimates and projections. Any square footage dimensions set forth are approximate.



INTERIOR

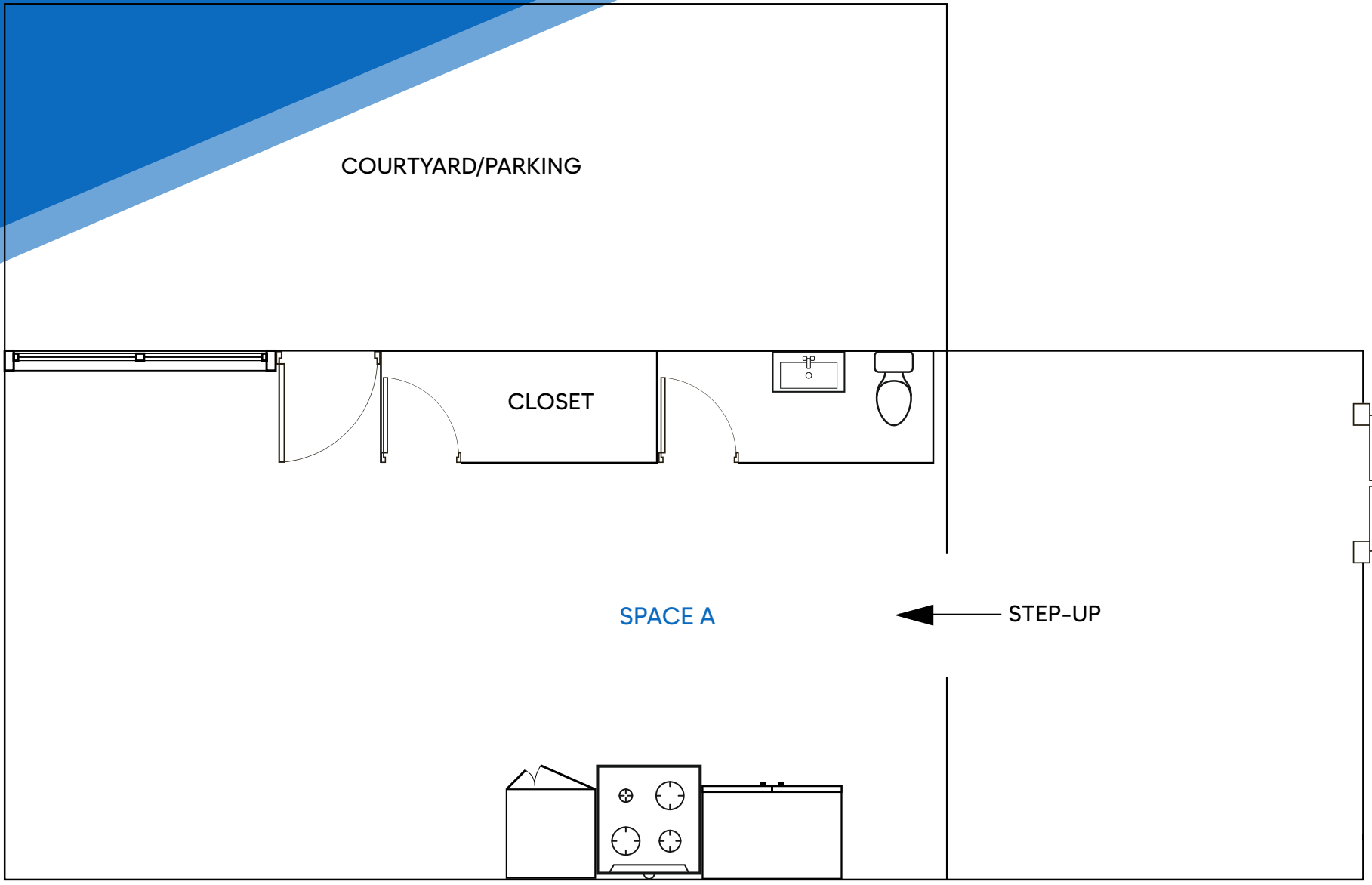
JAMES FAMULARO
President

KEVIN BISCONTI
Director
212.468.5962
kbisconti@meridiancapital.com

STEPHEN LIGAMBI
Associate
212.468.5985
sligambi@meridiancapital.com



FLOOR PLAN | SPACE A



JAMES FAMULARO
President

KEVIN BISCONTI
Director
212.468.5962
kbisconti@meridiancapital.com

STEPHEN LIGAMBI
Associate
212.468.5985
sligambi@meridiancapital.com



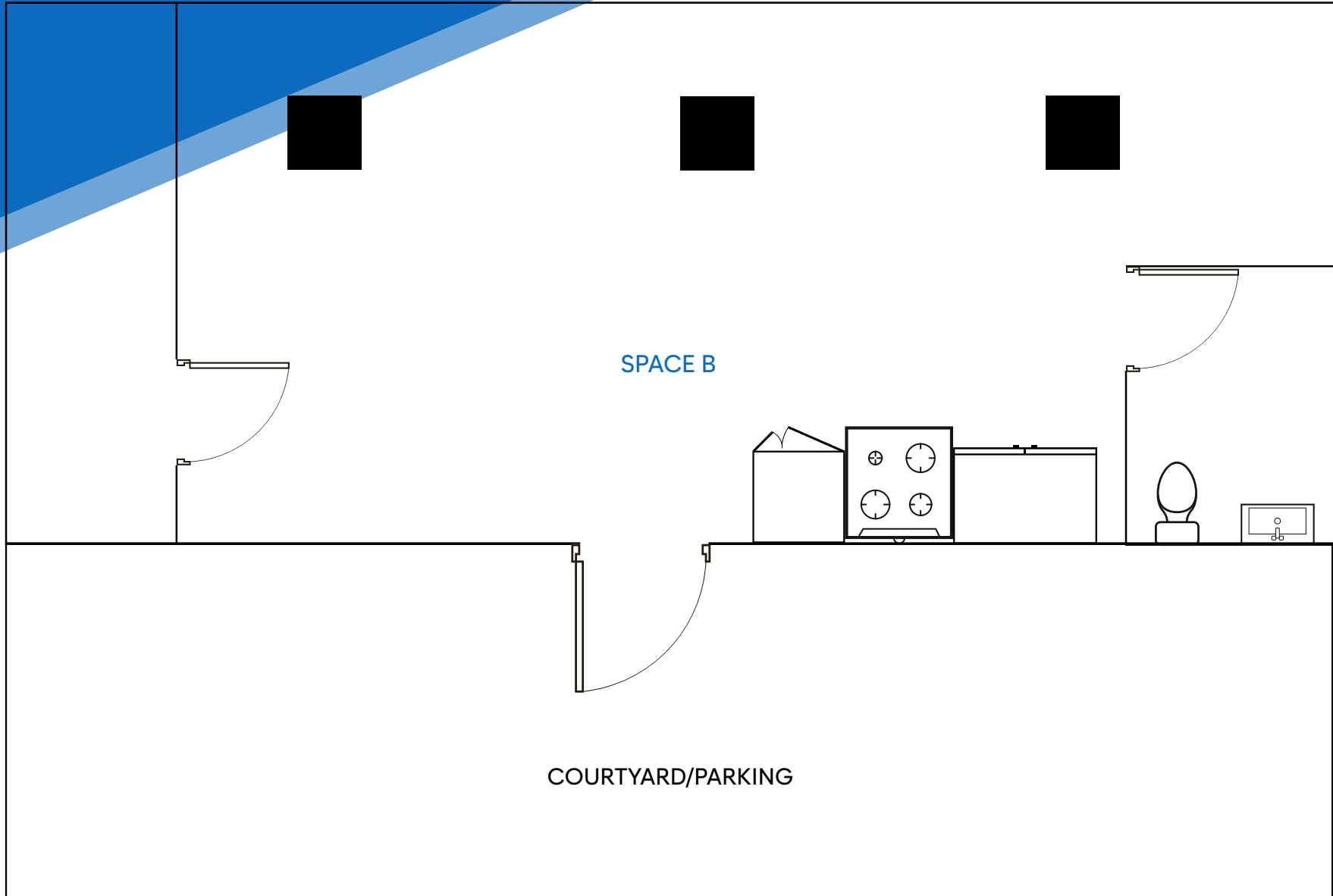
All information supplied is from sources deemed reliable and is furnished subject to errors, omissions, modifications, removal of the listing from sale or lease, and to any listing conditions, including the rates and manner of payment of commissions for particular offerings imposed by Meridian Capital Group. This information may include estimates and projections prepared by Meridian Capital Group with respect to future events, and these future events may or may not actually occur. Such estimates and projections reflect various assumptions concerning anticipated results. While Meridian Capital Group believes these assumptions are reasonable, there can be no assurance that any of these estimates and projections will be correct. Therefore, actual results may vary materially from these estimates and projections. Any square footage dimensions set forth are approximate.

267 WYCKOFF STREET

BOERUM HILL, BROOKLYN | Between Nevins Street and 3rd Avenue

RETAIL FOR LEASE

FLOOR PLAN | SPACE B



JAMES FAMULARO
President

KEVIN BISCONTI
Director
212.468.5962
kbisconti@meridiancapital.com

STEPHEN LIGAMBI
Associate
212.468.5985
sligambi@meridiancapital.com



All information supplied is from sources deemed reliable and is furnished subject to errors, omissions, modifications, removal of the listing from sale or lease, and to any listing conditions, including the rates and manner of payment of commissions for particular offerings imposed by Meridian Capital Group. This information may include estimates and projections prepared by Meridian Capital Group with respect to future events, and these future events may or may not actually occur. Such estimates and projections reflect various assumptions concerning anticipated results. While Meridian Capital Group believes these assumptions are reasonable, there can be no assurance that any of these estimates and projections will be correct. Therefore, actual results may vary materially from these estimates and projections. Any square footage dimensions set forth are approximate.



NEIGHBORS

JAMES FAMULARO
President

KEVIN BISCONTI
Director
212.468.5962
kbisconti@meridiancapital.com

STEPHEN LIGAMBI
Associate
212.468.5985
sligambi@meridiancapital.com

