

650

BROADWAY

NOHO, NYC

Between Blecker & Bond Streets

RETAIL/OFFICE FOR LEASE



APPROXIMATE SIZE

Fifth Floor: 4,000 SF

ASKING RENT

\$16,000/Month

POSSESSION

Immediate

TERM

5-15 Years

CEILING HEIGHT

12 FT

COMMENTS

- Loft-style open layout space
- Multiple bathrooms in place
- Space is in clean white-box condition
- Building is comprised of multiple boutique fitness operators that cater to the residents of NoHo
- Landlord will consider retail or office uses

NEIGHBORS

- Crate & Barrel • Urban Outfitters • Two Hands
• Kyu • Maria Tash • Emilio's Ballato • Slainte
• 310 Bowery Bar • Bondst • Fish Cheeks

TRANSPORTATION



JAMES FAMULARO

President

JOHN ROESCH

Director

212.468.5971

jroesch@meridiancapital.com

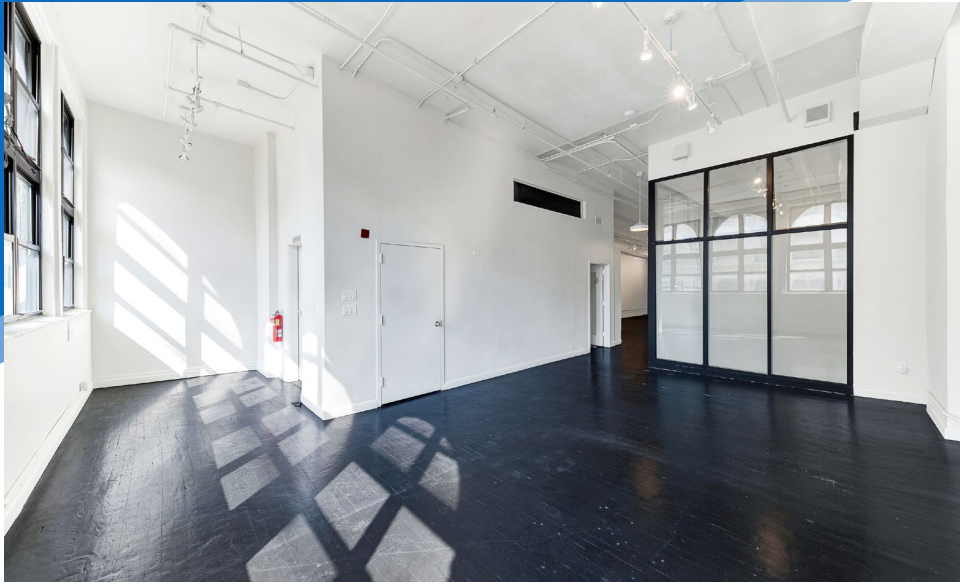


All information supplied is from sources deemed reliable and is furnished subject to errors, omissions, modifications, removal of the listing from sale or lease, and to any listing conditions, including the rates and manner of payment of commissions for particular offerings imposed by Meridian Capital Group. This information may include estimates and projections prepared by Meridian Capital Group with respect to future events, and these future events may or may not actually occur. Such estimates and projections reflect various assumptions concerning anticipated results. While Meridian Capital Group believes these assumptions are reasonable, there can be no assurance that any of these estimates and projections will be correct. Therefore, actual results may vary materially from these estimates and projections. Any square footage dimensions set forth are approximate.

650 BROADWAY

NOHO, NYC | Between Bleecker and Bond Streets

RETAIL/OFFICE FOR LEASE



INTERIOR

JAMES FAMULARO
President

JOHN ROESCH
Director
212.468.5971
jroesch@meridiancapital.com



All information supplied is from sources deemed reliable and is furnished subject to errors, omissions, modifications, removal of the listing from sale or lease, and to any listing conditions, including the rates and manner of payment of commissions for particular offerings imposed by Meridian Capital Group. This information may include estimates and projections prepared by Meridian Capital Group with respect to future events, and these future events may or may not actually occur. Such estimates and projections reflect various assumptions concerning anticipated results. While Meridian Capital Group believes these assumptions are reasonable, there can be no assurance that any of these estimates and projections will be correct. Therefore, actual results may vary materially from these estimates and projections. Any square footage dimensions set forth are approximate.

650 BROADWAY

NOHO, NYC | Between Bleecker and Bond Streets

RETAIL/OFFICE FOR LEASE



NEIGHBORS

JAMES FAMULARO
President

JOHN ROESCH
Director
212.468.5971
jroesch@meridiancapital.com



All information supplied is from sources deemed reliable and is furnished subject to errors, omissions, modifications, removal of the listing from sale or lease, and to any listing conditions, including the rates and manner of payment of commissions for particular offerings imposed by Meridian Capital Group. This information may include estimates and projections prepared by Meridian Capital Group with respect to future events, and these future events may or may not actually occur. Such estimates and projections reflect various assumptions concerning anticipated results. While Meridian Capital Group believes these assumptions are reasonable, there can be no assurance that any of these estimates and projections will be correct. Therefore, actual results may vary materially from these estimates and projections. Any square footage dimensions set forth are approximate.