

# 47

## EAST 34<sup>TH</sup> STREET MURRAY HILL, NYC

Between Park & Madison Avenues

RETAIL FOR LEASE

### APPROXIMATE SIZE

Ground Floor: 3,000 SF

### ASKING RENT

\$20,000/Month

### POSSESSION

Immediate

### TERM

10-15 Years

### FRONTAGE

27 FT

### COMMENTS

- Retail space located at the base of a 110-unit apartment building
- Ideal for fitness and showroom space
- Close Proximity to 34<sup>th</sup> Street-Herald Square Subway Station with annual ridership of 39 Million
- Steps from the Empire State Building
- Dry uses only

### NEIGHBORS

The Ainsworth • New York Sports Club • Wolfgang's Steakhosue • Roche Bobois • Serafina • Sweetgreen • Buttercup Bake Shop • Equinox • Tacombi • Zara • Lifetime Fitness • Paris Baguette

### TRANSPORTATION

4 5 6 7



PROPERTY INFORMATION

JAMES FAMULARO  
President

GREG GOLDBERG  
Senior Director  
646.780.4904  
ggoldberg@meridiancapital.com

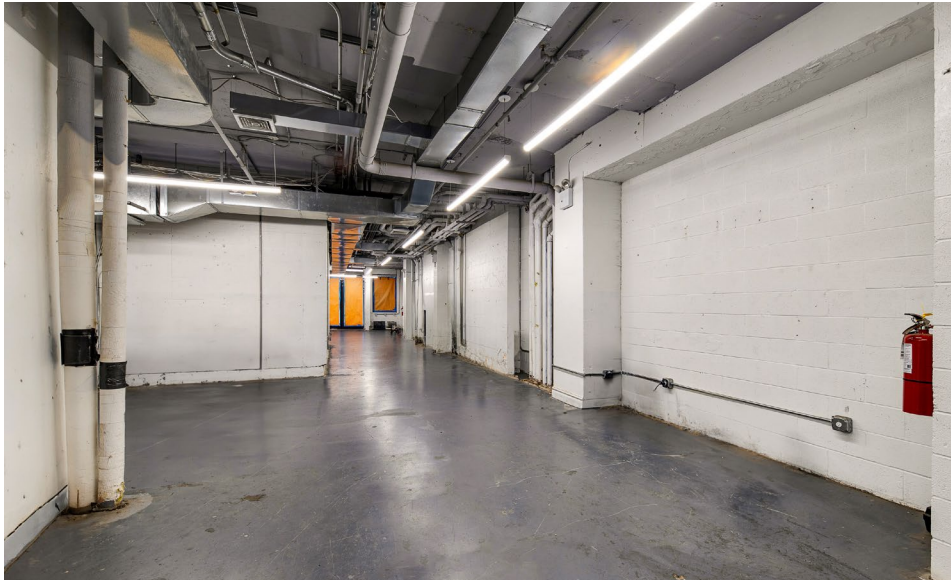
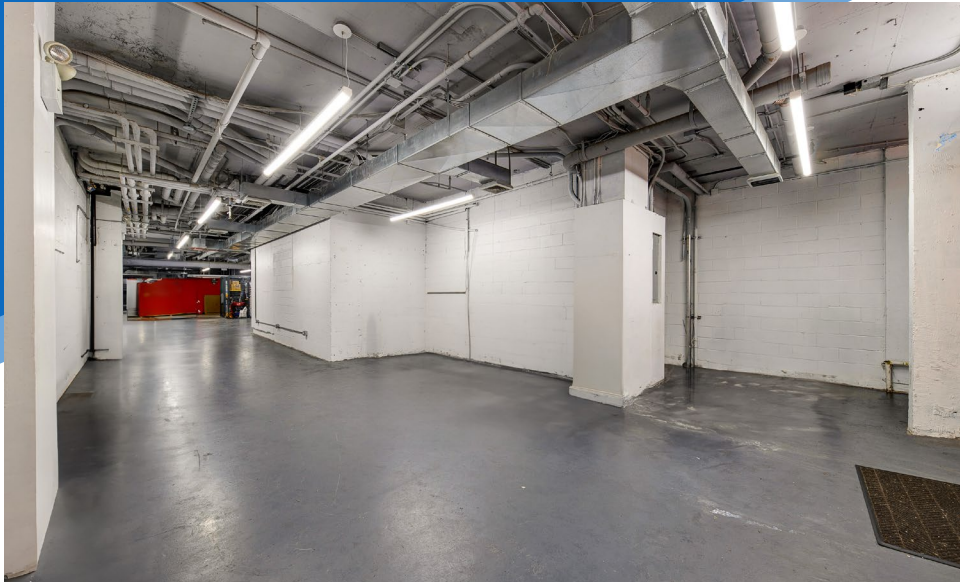
 **MERIDIAN**  
RETAIL LEASING

All information supplied is from sources deemed reliable and is furnished subject to errors, omissions, modifications, removal of the listing from sale or lease, and to any listing conditions, including the rates and manner of payment of commissions for particular offerings imposed by Meridian Capital Group. This information may include estimates and projections prepared by Meridian Capital Group with respect to future events, and these future events may or may not actually occur. Such estimates and projections reflect various assumptions concerning anticipated results. While Meridian Capital Group believes these assumptions are reasonable, there can be no assurance that any of these estimates and projections will be correct. Therefore, actual results may vary materially from these estimates and projections. Any square footage dimensions set forth are approximate.

# 47 EAST 34<sup>TH</sup> STREET

MURRAY HILL, NYC | Between Park and Madison Avenues

RETAIL FOR LEASE



INTERIOR

**JAMES FAMULARO**  
President

**GREG GOLDBERG**  
Senior Director  
646.780.4904  
ggoldberg@meridiancapital.com

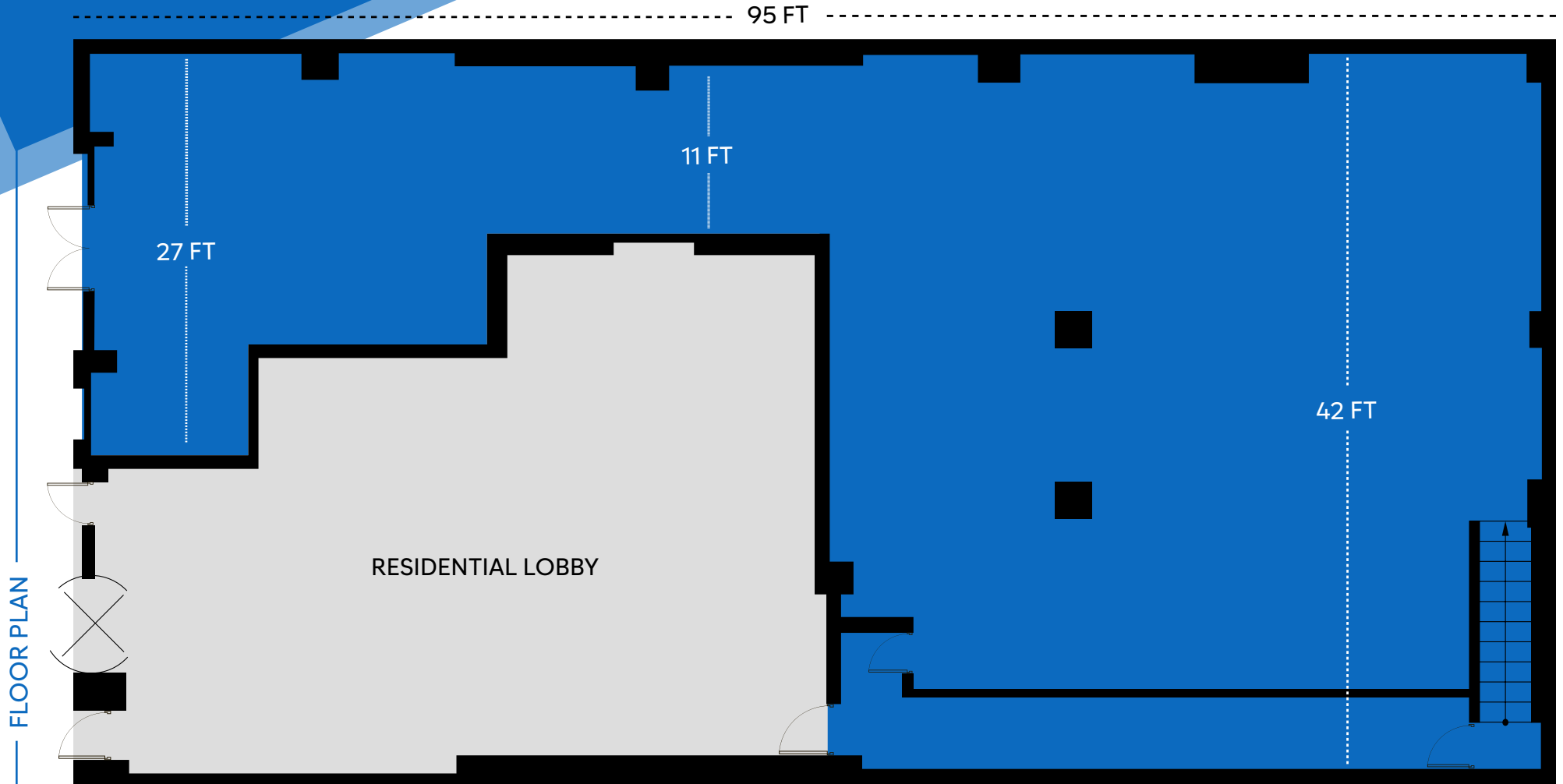


All information supplied is from sources deemed reliable and is furnished subject to errors, omissions, modifications, removal of the listing from sale or lease, and to any listing conditions, including the rates and manner of payment of commissions for particular offerings imposed by Meridian Capital Group. This information may include estimates and projections prepared by Meridian Capital Group with respect to future events, and these future events may or may not actually occur. Such estimates and projections reflect various assumptions concerning anticipated results. While Meridian Capital Group believes these assumptions are reasonable, there can be no assurance that any of these estimates and projections will be correct. Therefore, actual results may vary materially from these estimates and projections. Any square footage dimensions set forth are approximate.

47 EAST 34<sup>TH</sup> STREET

MURRAY HILL, NYC | Between Park and Madison Avenues

RETAIL FOR LEASE



JAMES FAMULARO  
President

GREG GOLDBERG  
Senior Director  
646.780.4904  
ggoldberg@meridiancapital.com



All information supplied is from sources deemed reliable and is furnished subject to errors, omissions, modifications, removal of the listing from sale or lease, and to any listing conditions, including the rates and manner of payment of commissions for particular offerings imposed by Meridian Capital Group. This information may include estimates and projections prepared by Meridian Capital Group with respect to future events, and these future events may or may not actually occur. Such estimates and projections reflect various assumptions concerning anticipated results. While Meridian Capital Group believes these assumptions are reasonable, there can be no assurance that any of these estimates and projections will be correct. Therefore, actual results may vary materially from these estimates and projections. Any square footage dimensions set forth are approximate.

BRYANT PARK

W 40TH STREET

stout nyc, Angelina, Starbucks, Benjamin Moore, The Best Sichuan, Koi Restaurant, LA Pecora Bianca, corepower YOGA, The Ruby Theatre, PARK TERRACE HOTEL, HERITAGE, Staples

W 39TH STREET

BURGER KING, MARRIOTT BONVOY, DUNKIN', HYATT, SUBWAY, Newsell Bodywork, amazon, Silver Mirror, HYATT CHASE

W 38TH STREET

Spirit Lab, SOPHIE'S, GDK, Cozy Rice, BISTRO, FIVE GUYS, THE WESTBURY, Blaggarts, CVS pharmacy, The Picnic Basket, CMD, DAVID ROSENBERG

W 37TH STREET

PARIS BAGUETTE, DUNKIN', Pusheen Box, The RealReal, TONCHIN, The Langham, The Petal Rooms, DEN SOCIAL, KEG ROOM, AL FIORI

W 36TH STREET

FedEx, Hilton, Kixby, DUNKIN', The ParLOUR, CLINTON HALL, RainBOW, MONARCH, THE LIBERTY, BRAVO KOSHER, CAMPERO

W 35TH STREET

benefit, STEVE MADDEN, ULTA, LEVI'S, ZARA, ZUMIEZ, SUPERDRY, Foot Locker, BARN JOO, LENS CRAFTERS, AMERICA'S KIDS, BANANA REPUBLIC

W 34TH STREET

AMERICAN EAGLE, aerie, DAISY SPA, Starbucks, THE EMPIRE STATE BUILDING, Nailauri, DANCE SPORT, CHOPT, aura, DE JANEIRO, STATE, LIFE TIME

W 33RD STREET

CAVA, New York Public Library, Rainbow, NATHALIE, Adore Lashes, GREGORY'S COFFEE

just salad, SH, HYATT CHASE, RITENON ON 38, Evergreen on 38th Street, M2L, Pico Bagel

ZALES, A E S N Y C, Ritenon On 38, Evergreen on 38th Street, M2L, Pico Bagel

Tiffany & Co., UNREGULAR, Lunar, GEMS OCEAN, CHABAD, PRET, 5TH & MAD, Park City Florist

PETER BILLOM'S, AMAVI, HEBE, rochebobois, Manhattan Dental Spa

GRADUATE CENTER, OXFORD UNIVERSITY PRESS, citi bike, Ponchos Deli

CHASE, WELLS FARGO, RUGTIER, OLIVIA HELDMAN, TUMI, FREN OPTICAL, THE COMPLEAT STRATEGIST

E 40TH STREET

DUNKIN', Food Merchants Cafe, BM NY, citi, Martiny, Tamale Lady, MULLIGAN'S IRISH PUB

E 39TH STREET

THE RAINES LAW FIRM, JUST VIOLET, The William, TABOTT, IHG, MANHATTAN REFORMATION

E 38TH STREET

Songline, NH HOTELS, Church of Our Saviour, Chapel of the Sacred Heart of Jesus and Mary, Banville, Mary Aranas

E 37TH STREET

The Morgan Library & Museum, SC, SMILE CAFE, MANUAL THERAPY NYC, moonflower spa, Papiet, UNTOLD HORIZONS

E 36TH STREET

New York Nails, Angel New York Spa, citi bike, CHURCH OF THE INCARNATION, Gre, Deer Tails and Spa

E 35TH STREET

EYES ON MADISON, THE COMMONS GROUP, TIBERIAN, KOSHE POKO, Mount Sinai, BEFORD, New Church, Swedenborgian

E 34TH STREET

CHASE, WELLS FARGO, ddc, Hamachi 34, DUANE READER, Perfect Look, ANSWORTH, GLAMSQUAD, Levain, Hilton

E 33RD STREET

PRET, MATTO, Lasagne Express, momoson, numerix, KAWABUN, Dinosaur Garden, PARK AVENUE TAVERN, LEXINGTON, SUSHI

WYNDHAM, 39 Nail & Spa, Anthea Cafe, Dunhuang, All Seasons Body Work

Church of Our Saviour, Chapel of the Sacred Heart of Jesus and Mary, Banville, Mary Aranas, SKIN CLINIC

SC, SMILE CAFE, MANUAL THERAPY NYC, moonflower spa, Papiet, UNTOLD HORIZONS

New York Nails, Angel New York Spa, citi bike, CHURCH OF THE INCARNATION, Gre, Deer Tails and Spa

EYES ON MADISON, THE COMMONS GROUP, TIBERIAN, KOSHE POKO, Mount Sinai, BEFORD, New Church, Swedenborgian, ups, Green Leaf Gourmet, Villa Benito, Santander

CHASE, WELLS FARGO, ddc, Hamachi 34, DUANE READER, Perfect Look, ANSWORTH, GLAMSQUAD, Levain, Hilton, NISC, AT&T, PEPERINO, The Cumin Bowl, Dynamics NYC

PETER BILLOM'S, Bagel Express, The Wine Shop, DREVI, Hunan Village

39 Nail & Spa, Anthea Cafe, Dunhuang, All Seasons Body Work, WOKUN

Church of Our Saviour, Chapel of the Sacred Heart of Jesus and Mary, Banville, Mary Aranas, SKIN CLINIC

SC, SMILE CAFE, MANUAL THERAPY NYC, moonflower spa, Papiet, UNTOLD HORIZONS, macul

New York Nails, Angel New York Spa, citi bike, CHURCH OF THE INCARNATION, Gre, Deer Tails and Spa

EYES ON MADISON, THE COMMONS GROUP, TIBERIAN, KOSHE POKO, Mount Sinai, BEFORD, New Church, Swedenborgian, ups, Green Leaf Gourmet, Villa Benito, Santander, Yeshi

CHASE, WELLS FARGO, ddc, Hamachi 34, DUANE READER, Perfect Look, ANSWORTH, GLAMSQUAD, Levain, Hilton, NISC, AT&T, PEPERINO, The Cumin Bowl, Dynamics NYC, DUN, BODY, NYU La He



NEIGHBORS

BROADWAY

SIXTH AVENUE

FIFTH AVENUE

MADISON AVENUE

PARK AVENUE

LEXINGTON AVENUE

JAMES FAMULARO  
President

GREG GOLDBERG  
Senior Director  
646.780.4904  
ggoldberg@meridiancapital.com



All information supplied is from sources deemed reliable and is furnished subject to errors, omissions, modifications, removal of the listing from sale or lease, and to any listing conditions, including the rates and manner of payment of commissions for particular offerings imposed by Meridian Capital Group. This information may include estimates and projections prepared by Meridian Capital Group with respect to future events, and these future events may or may not actually occur. Such estimates and projections reflect various assumptions concerning anticipated results. While Meridian Capital Group believes these assumptions are reasonable, there can be no assurance that any of these estimates and projections will be correct. Therefore, actual results may vary materially from these estimates and projections. Any square footage dimensions set forth are approximate.