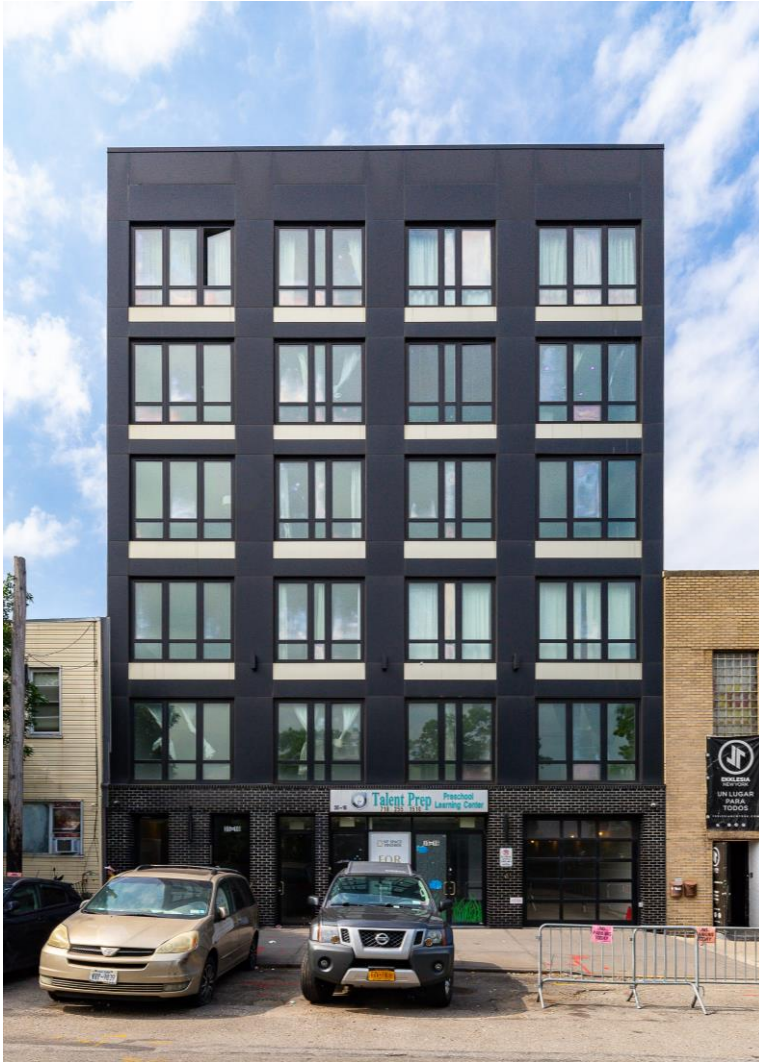


35-16 Astoria Boulevard

FOR SALE | SUBSTANTIALLY VACANT LUXURY MULTIFAMILY | ASTORIA, NY



ASKING PRICE

\$8,750,000

14,114 SF | 46' WIDE
15 RESIDENTIAL UNITS
1 COMMUNITY - USE UNIT
6 UNDERGROUND PARKING SPACES

- **6-Story, Luxury Elevator Serviced Multifamily Building with Sweeping Views of Manhattan's Skyline**
- **Delivered Substantially Vacant**
- **Two 1 BR Units & One 2 BR Unit with Terraces on Floors 2-6, Units are Individually Metered**
- **Community-Use Space on the Ground Floor & 6 Underground Parking Spaces**
- **Prime Astoria Location - Close Proximity to Popular Bars & Restaurants, Mount Sinai Hospital, and Steinway Street / 31st Avenue & Ditmars / Steinway Retail Corridors**
- **Close Proximity to the Astoria Boulevard N & W Trains**
- **Built in 2013, 15 Year 421A Abatement in Place**

PROPERTY INFORMATION

NEIGHBORHOOD	Astoria, NY
CROSS STREETS	South side of Astoria Boulevard between 35 th & 36 th Streets
BLOCK / LOT	633 / 40
LOT DIMENSIONS	3,418 SF 46' x 74' Irregular
BUILDING SIZE (SF)	14,114 SF
YEAR BUILT	2013
STORIES	6

RESIDENTIAL UNITS	15
PARKING SPACES	6
COMMUNITY FACILITY UNIT	1
TAX ASSESSMENT (24/25)	\$1,105,200
421A 15 YEAR CAP	-\$920,697
TAX RATE (CLASS 2)	12.502%
TAXES (24/25)	\$23,066
ZONING	C4-3

Contact the Exclusive Agents for Additional Information:

David Schechtman

SR EXECUTIVE MANAGING DIRECTOR
INVESTMENT SALES

212.468.5907

ekim@meridiancapital.com

Thomas A. Donovan

PRESIDENT
QUEENS INVESTMENT SALES

646.502.3481

tdonovan@meridiancapital.com

Abie Kassin

MANAGING DIRECTOR
INVESTMENT SALES

212.468.5909

akassin@meridiancapital.com

Tommy Lin

VICE PRESIDENT
INVESTMENT SALES

646.502.3484

tlin@meridiancapital.com

35-16 Astoria Boulevard

FOR SALE | SUBSTANTIALLY VACANT LUXURY MULTIFAMILY | ASTORIA, NY

LAYOUT

1 Bed Units - 550 SF approx
2 Bed Units - 625 SF approx

Parking - 6 Spaces

Community Facility - 2800 SF

2A - 1 Bed
2B - 1 Bed
2C - 2 Bed/Large Terrace

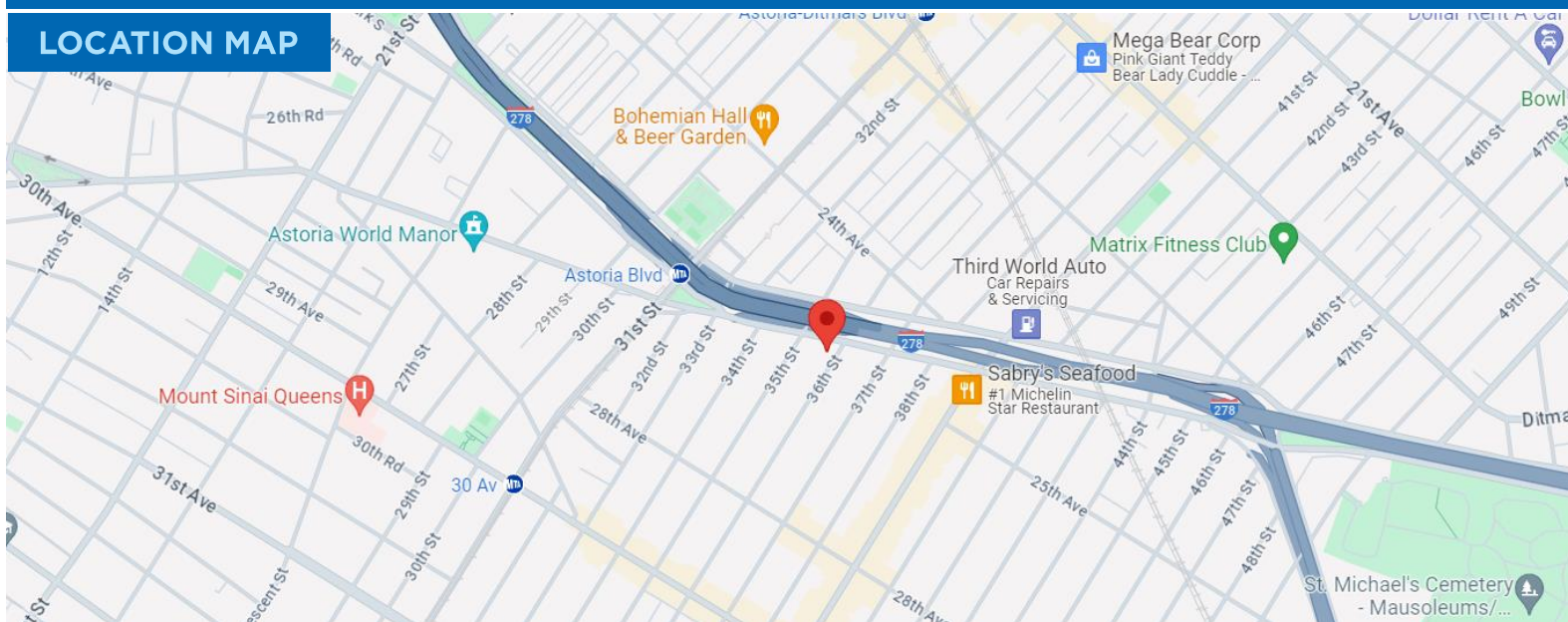
3A - 1 Bed
3B - 1 Bed
3C - 2 Bed/2 Terrace

4A - 1 Bed
4B - 1 Bed
4C - 2 Bed/2 Terrace

5A - 1 Bed
5B - 1 Bed
5C - 2 Bed/2 Terrace

6A - 1 Bed
6B - 1 Bed
6C - 2 Bed/2 Terrace

LOCATION MAP



TAX MAP



Contact the Exclusive Agents for Additional Information:

David Schechtman

SR EXECUTIVE MANAGING DIRECTOR
INVESTMENT SALES

212.468.5907

ekim@meridiancapital.com

Thomas A. Donovan

PRESIDENT
QUEENS INVESTMENT SALES

646.502.3481

tdonovan@meridiancapital.com

Abie Kassir

MANAGING DIRECTOR
INVESTMENT SALES

212.468.5909

akassin@meridiancapital.com

Tommy Lin

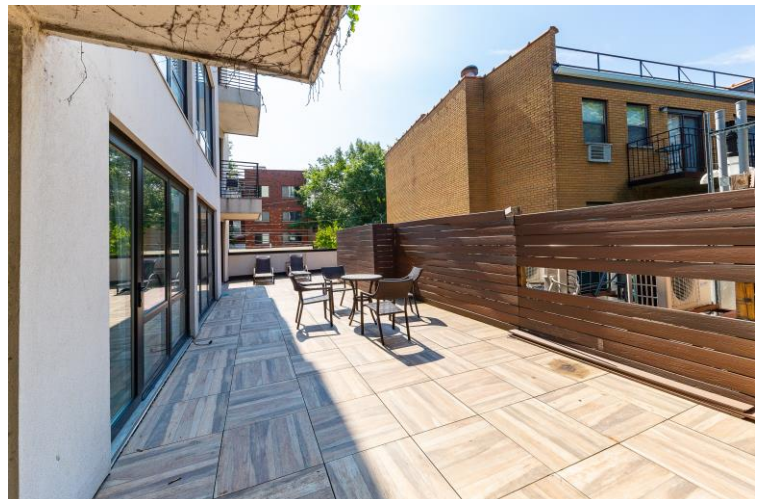
VICE PRESIDENT
INVESTMENT SALES

646.502.3484

tlin@meridiancapital.com

35-16 Astoria Boulevard

FOR SALE | SUBSTANTIALLY VACANT LUXURY MULTIFAMILY | ASTORIA, NY



Contact the Exclusive Agents for Additional Information:

David Schechtman

SR EXECUTIVE MANAGING DIRECTOR
INVESTMENT SALES

212.468.5907

ekim@meridiancapital.com

Thomas A. Donovan

PRESIDENT
QUEENS INVESTMENT SALES

646.502.3481

tdonovan@meridiancapital.com

Abie Kassin

MANAGING DIRECTOR
INVESTMENT SALES

212.468.5909

akassin@meridiancapital.com

Tommy Lin

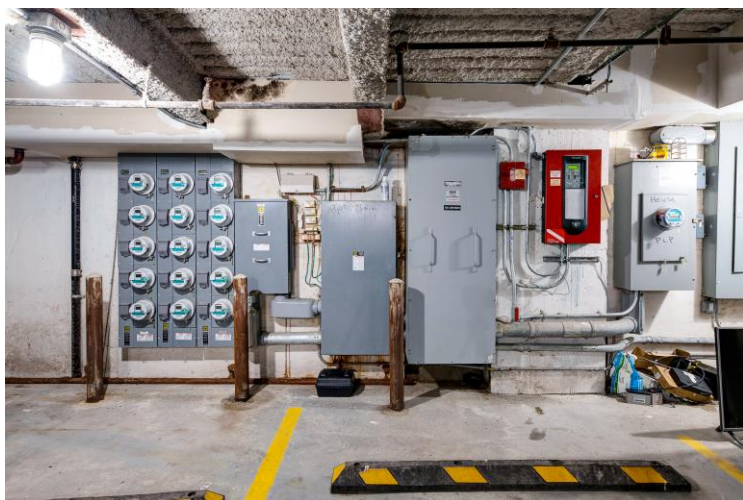
VICE PRESIDENT
INVESTMENT SALES

646.502.3484

tlin@meridiancapital.com

35-16 Astoria Boulevard

FOR SALE | SUBSTANTIALLY VACANT LUXURY MULTIFAMILY | ASTORIA, NY



Contact the Exclusive Agents for Additional Information:

David Schechtman

SR EXECUTIVE MANAGING DIRECTOR
INVESTMENT SALES

212.468.5907

ekim@meridiancapital.com

Thomas A. Donovan

PRESIDENT
QUEENS INVESTMENT SALES

646.502.3481

tdonovan@meridiancapital.com

Abie Kassin

MANAGING DIRECTOR
INVESTMENT SALES

212.468.5909

akassin@meridiancapital.com

Tommy Lin

VICE PRESIDENT
INVESTMENT SALES

646.502.3484

tlin@meridiancapital.com