

# 344D

**MAUJER STREET**  
EAST WILLIAMSBURG, BROOKLYN

Between Morgan & Waterbury Streets

INDUSTRIAL FOR LEASE

## APPROXIMATE SIZE

3,400 SF

## ASKING RENT

Upon Request

## POSSESSION

Immediate

## TERM

Negotiable

## FRONTAGE

34 FT

## COMMENTS

- Large space built-out for offices/studios
- Option to white-box with loading dock
- Close to the L train and 1 mile from the BQE
- All uses considered

## NEIGHBORS

Bella's Pierogies • Spelta • Popeyes • Frito Lay  
• D&J Grocery • BP Gas Station • Dynamic  
Fitness • Variety Coffee • 1-800 Flowers

## TRANSPORTATION



PROPERTY INFORMATION

## JAMES FAMULARO

President

## STEPHEN LIGAMBI

Associate  
212.468.5985  
sligambi@meridiancapital.com

## JOSEPH HARARY

Associate  
212.468.5978  
jharary@meridiancapital.com

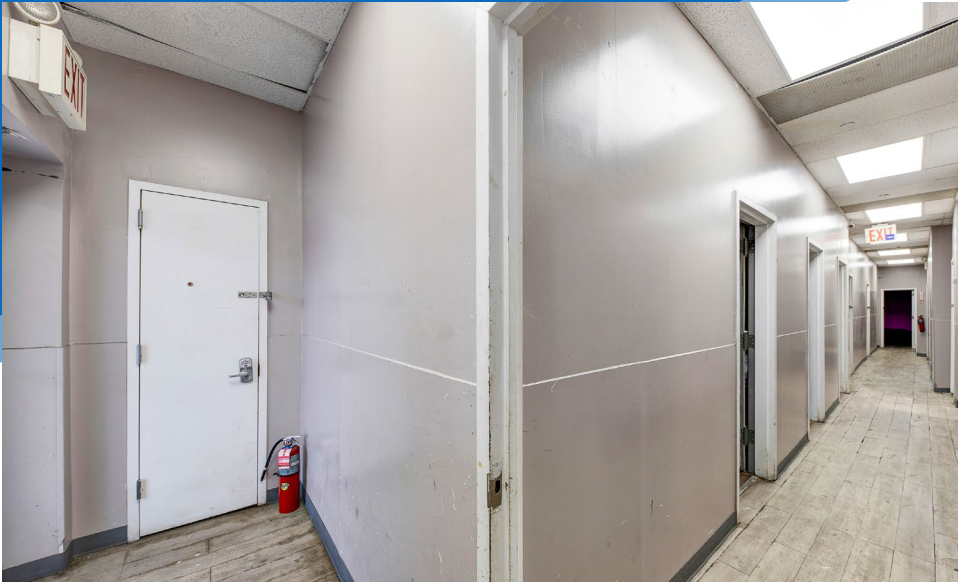


All information supplied is from sources deemed reliable and is furnished subject to errors, omissions, modifications, removal of the listing from sale or lease, and to any listing conditions, including the rates and manner of payment of commissions for particular offerings imposed by Meridian Capital Group. This information may include estimates and projections prepared by Meridian Capital Group with respect to future events, and these future events may or may not actually occur. Such estimates and projections reflect various assumptions concerning anticipated results. While Meridian Capital Group believes these assumptions are reasonable, there can be no assurance that any of these estimates and projections will be correct. Therefore, actual results may vary materially from these estimates and projections. Any square footage dimensions set forth are approximate.

# 344D MAUJER STREET

EAST WILLIAMSBURG, BROOKLYN | Between Morgan and Waterbury Streets

INDUSTRIAL FOR LEASE



INTERIOR

**JAMES FAMULARO**  
President

**STEPHEN LIGAMBI**  
Associate  
212.468.5985  
sligambi@meridiancapital.com

**JOSEPH HARARY**  
Associate  
212.468.5978  
jharary@meridiancapital.com



All information supplied is from sources deemed reliable and is furnished subject to errors, omissions, modifications, removal of the listing from sale or lease, and to any listing conditions, including the rates and manner of payment of commissions for particular offerings imposed by Meridian Capital Group. This information may include estimates and projections prepared by Meridian Capital Group with respect to future events, and these future events may or may not actually occur. Such estimates and projections reflect various assumptions concerning anticipated results. While Meridian Capital Group believes these assumptions are reasonable, there can be no assurance that any of these estimates and projections will be correct. Therefore, actual results may vary materially from these estimates and projections. Any square footage dimensions set forth are approximate.

# 344D MAUJER STREET

EAST WILLIAMSBURG, BROOKLYN | Between Morgan and Waterbury Streets

## INDUSTRIAL FOR LEASE

FLOOR PLAN



**JAMES FAMULARO**  
President

**STEPHEN LIGAMBI**  
Associate  
212.468.5985  
sligambi@meridiancapital.com

**JOSEPH HARARY**  
Associate  
212.468.5978  
jharary@meridiancapital.com



All information supplied is from sources deemed reliable and is furnished subject to errors, omissions, modifications, removal of the listing from sale or lease, and to any listing conditions, including the rates and manner of payment of commissions for particular offerings imposed by Meridian Capital Group. This information may include estimates and projections prepared by Meridian Capital Group with respect to future events, and these future events may or may not actually occur. Such estimates and projections reflect various assumptions concerning anticipated results. While Meridian Capital Group believes these assumptions are reasonable, there can be no assurance that any of these estimates and projections will be correct. Therefore, actual results may vary materially from these estimates and projections. Any square footage dimensions set forth are approximate.

# 344D MAUJER STREET

EAST WILLIAMSBURG, BROOKLYN | Between Morgan and Waterbury Streets

INDUSTRIAL FOR LEASE



NEIGHBORS

**JAMES FAMULARO**  
President

**JOSEPH HARARY**  
Associate  
212.468.5978  
jharary@meridiancapital.com

**STEPHEN LIGAMBI**  
Associate  
212.468.5985  
sligambi@meridiancapital.com



All information supplied is from sources deemed reliable and is furnished subject to errors, omissions, modifications, removal of the listing from sale or lease, and to any listing conditions, including the rates and manner of payment of commissions for particular offerings imposed by Meridian Capital Group. This information may include estimates and projections prepared by Meridian Capital Group with respect to future events, and these future events may or may not actually occur. Such estimates and projections reflect various assumptions concerning anticipated results. While Meridian Capital Group believes these assumptions are reasonable, there can be no assurance that any of these estimates and projections will be correct. Therefore, actual results may vary materially from these estimates and projections. Any square footage dimensions set forth are approximate.