

# 240

## EAST 4<sup>TH</sup> STREET EAST VILLAGE, NYC

Between Avenues A & B

RETAIL FOR LEASE

### APPROXIMATE SIZE

350 SF

### ASKING RENT

\$5,000/Month

### POSSESSION

Immediate

### TERM

Negotiable

### FRONTAGE

10 FT

### COMMENTS

- Boutique retail space
- Private bathroom in place
- Heavy residential area

### NEIGHBORS

Virginia's • Hairy Lemon • Gaia • Eastpoint • Poco NYC • Tmpl • Davidoch Bakery • Ace Bar • The Cabin NYC • Pardon My French • Pineapple Club

### TRANSPORTATION



PROPERTY INFORMATION

**JAMES FAMULARO**  
President

**GARRETT KELLY**  
Director  
212.468.5939  
gkelly@meridiancapital.com

**JOSH ERBER**  
Associate  
212.468.5944  
josh.erber@meridiancapital.com

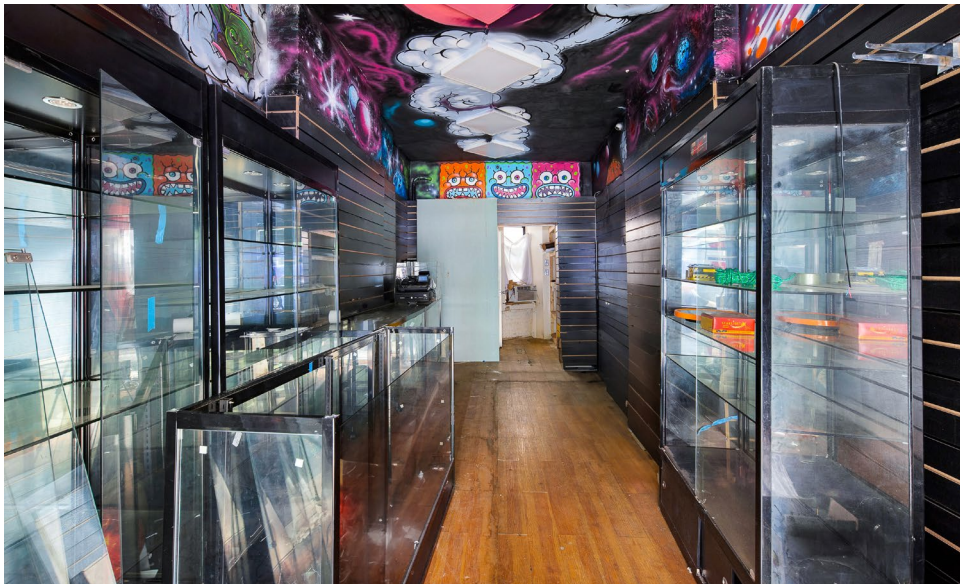


All information supplied is from sources deemed reliable and is furnished subject to errors, omissions, modifications, removal of the listing from sale or lease, and to any listing conditions, including the rates and manner of payment of commissions for particular offerings imposed by Meridian Capital Group. This information may include estimates and projections prepared by Meridian Capital Group with respect to future events, and these future events may or may not actually occur. Such estimates and projections reflect various assumptions concerning anticipated results. While Meridian Capital Group believes these assumptions are reasonable, there can be no assurance that any of these estimates and projections will be correct. Therefore, actual results may vary materially from these estimates and projections. Any square footage dimensions set forth are approximate.

# 240 EAST 4<sup>TH</sup> STREET

EAST VILLAGE, NYC | Between Avenues A and B

RETAIL FOR LEASE



INTERIOR

**JAMES FAMULARO**  
President

**GARRETT KELLY**  
Director  
212.468.5939  
gkelly@meridiancapital.com

**JOSH ERBER**  
Associate  
212.468.5944  
josh.erber@meridiancapital.com



All information supplied is from sources deemed reliable and is furnished subject to errors, omissions, modifications, removal of the listing from sale or lease, and to any listing conditions, including the rates and manner of payment of commissions for particular offerings imposed by Meridian Capital Group. This information may include estimates and projections prepared by Meridian Capital Group with respect to future events, and these future events may or may not actually occur. Such estimates and projections reflect various assumptions concerning anticipated results. While Meridian Capital Group believes these assumptions are reasonable, there can be no assurance that any of these estimates and projections will be correct. Therefore, actual results may vary materially from these estimates and projections. Any square footage dimensions set forth are approximate.

240 EAST 4<sup>TH</sup> STREET

EAST VILLAGE, NYC | Between Avenues A and B

RETAIL FOR LEASE



NEIGHBORS

JAMES FAMULARO  
President

GARRETT KELLY  
Director  
212.468.5939  
gkelly@meridiancapital.com

JOSH ERBER  
Associate  
212.468.5944  
josh.erber@meridiancapital.com



All information supplied is from sources deemed reliable and is furnished subject to errors, omissions, modifications, removal of the listing from sale or lease, and to any listing conditions, including the rates and manner of payment of commissions for particular offerings imposed by Meridian Capital Group. This information may include estimates and projections prepared by Meridian Capital Group with respect to future events, and these future events may or may not actually occur. Such estimates and projections reflect various assumptions concerning anticipated results. While Meridian Capital Group believes these assumptions are reasonable, there can be no assurance that any of these estimates and projections will be correct. Therefore, actual results may vary materially from these estimates and projections. Any square footage dimensions set forth are approximate.