

# 229

## WEST 101<sup>ST</sup> STREET UPPER WEST SIDE, NYC

Between Broadway & West End Avenue

OFFICE FOR LEASE



PROPERTY INFORMATION

### APPROXIMATE SIZE

Ground Floor: 500 SF  
Basement: 600 SF

### ASKING RENT

Upon Request

### POSSESSION

Immediate

### TERM

Negotiable

### FRONTAGE

10 FT

### COMMENTS

- Previously "Cathedral Animal Hospital"
- Built-out professional office space
- High residential area with heavy foot traffic and strong co-tenants
- Only professional office uses considered

### NEIGHBORS

Wingstop • Abigail's • Wolfnights • Pet Central • Dunkin' • Broadway Bagels • Variazioni • Noche Mexicana • Duane Reade • Metro Diner

### TRANSPORTATION



**JAMES FAMULARO**

President

**BEN BIBERAJ**

Senior Director  
703.434.1461  
bbiberaj@meridiancapital.com

**DESI AVIDANE**

Associate  
212.468.5990  
davidane@meridiancapital.com



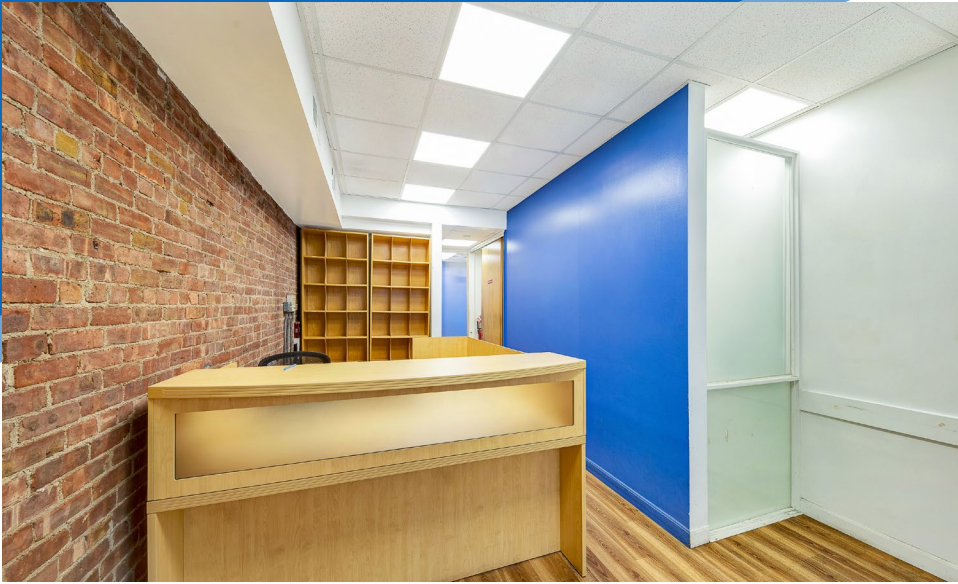
All information supplied is from sources deemed reliable and is furnished subject to errors, omissions, modifications, removal of the listing from sale or lease, and to any listing conditions, including the rates and manner of payment of commissions for particular offerings imposed by Meridian Capital Group. This information may include estimates and projections prepared by Meridian Capital Group with respect to future events, and these future events may or may not actually occur. Such estimates and projections reflect various assumptions concerning anticipated results. While Meridian Capital Group believes these assumptions are reasonable, there can be no assurance that any of these estimates and projections will be correct. Therefore, actual results may vary materially from these estimates and projections. Any square footage dimensions set forth are approximate.



229 WEST 101<sup>ST</sup> STREET

UPPER WEST SIDE, NYC | Between Broadway and West End Avenue

OFFICE FOR LEASE



INTERIOR

JAMES FAMULARO  
President

BEN BIBERAJ  
Senior Director  
703.434.1461  
bbiberaj@meridiancapital.com

DESI AVIDANE  
Associate  
212.468.5990  
davidane@meridiancapital.com



All information supplied is from sources deemed reliable and is furnished subject to errors, omissions, modifications, removal of the listing from sale or lease, and to any listing conditions, including the rates and manner of payment of commissions for particular offerings imposed by Meridian Capital Group. This information may include estimates and projections prepared by Meridian Capital Group with respect to future events, and these future events may or may not actually occur. Such estimates and projections reflect various assumptions concerning anticipated results. While Meridian Capital Group believes these assumptions are reasonable, there can be no assurance that any of these estimates and projections will be correct. Therefore, actual results may vary materially from these estimates and projections. Any square footage dimensions set forth are approximate.

229 WEST 101<sup>ST</sup> STREET

UPPER WEST SIDE, NYC | Between Broadway and West End Avenue

OFFICE FOR LEASE



NEIGHBORS

**JAMES FAMULARO**  
President

**BEN BIBERAJ**  
Senior Director  
703.434.1461  
bbiberaj@meridiancapital.com

**DESI AVIDANE**  
Associate  
212.468.5990  
davidane@meridiancapital.com



All information supplied is from sources deemed reliable and is furnished subject to errors, omissions, modifications, removal of the listing from sale or lease, and to any listing conditions, including the rates and manner of payment of commissions for particular offerings imposed by Meridian Capital Group. This information may include estimates and projections prepared by Meridian Capital Group with respect to future events, and these future events may or may not actually occur. Such estimates and projections reflect various assumptions concerning anticipated results. While Meridian Capital Group believes these assumptions are reasonable, there can be no assurance that any of these estimates and projections will be correct. Therefore, actual results may vary materially from these estimates and projections. Any square footage dimensions set forth are approximate.