

215

MADISON AVENUE MURRAY HILL, NYC

Corner of Madison Avenue & East 36th Street

MEDICAL FOR LEASE

APPROXIMATE SIZE

Ground Floor: 2,455 SF

ASKING RENT

\$14,000/Month

POSSESSION

Immediate

TERM

Negotiable

FRONTAGE

50+ FT

COMMENTS

- Built-out corner medical space
- Motivated landlord with flexible terms
- Highly visible corner with tons of exposure on Madison Avenue
- Centrally located to all major transportation systems

NEIGHBORS

The Empire State Building • Chopt • The Ainsworth • Murray Hill Diner • Unregular Pizza • Serafina • Mad Dog • Ai Fiori • American Eagle • Lifetime Fitness

TRANSPORTATION



PROPERTY INFORMATION

JAMES FAMULARO

President

GARRETT KELLY

Director

212.468.5939

gkelly@meridiancapital.com

NOAM AZIZ

Associate

212.468.5984

naziz@meridiancapital.com

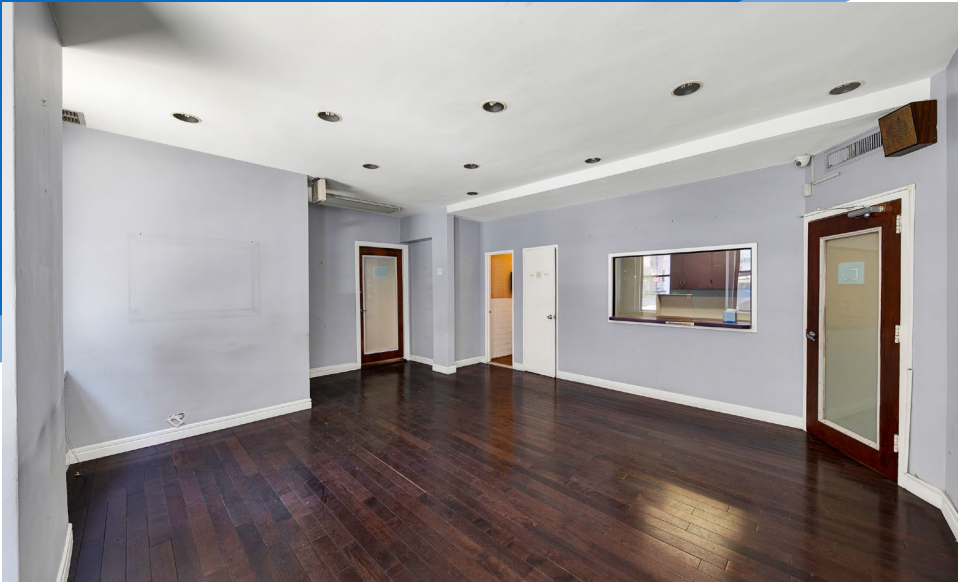


All information supplied is from sources deemed reliable and is furnished subject to errors, omissions, modifications, removal of the listing from sale or lease, and to any listing conditions, including the rates and manner of payment of commissions for particular offerings imposed by Meridian Capital Group. This information may include estimates and projections prepared by Meridian Capital Group with respect to future events, and these future events may or may not actually occur. Such estimates and projections reflect various assumptions concerning anticipated results. While Meridian Capital Group believes these assumptions are reasonable, there can be no assurance that any of these estimates and projections will be correct. Therefore, actual results may vary materially from these estimates and projections. Any square footage dimensions set forth are approximate.

215 MADISON AVENUE

MURRAY HILL, NYC | Corner of Madison Avenue and East 36th Street

MEDICAL FOR LEASE



INTERIOR

JAMES FAMULARO
President

GARRETT KELLY
Director
212.468.5939
gkelly@meridiancapital.com

NOAM AZIZ
Associate
212.468.5984
naziz@meridiancapital.com



All information supplied is from sources deemed reliable and is furnished subject to errors, omissions, modifications, removal of the listing from sale or lease, and to any listing conditions, including the rates and manner of payment of commissions for particular offerings imposed by Meridian Capital Group. This information may include estimates and projections prepared by Meridian Capital Group with respect to future events, and these future events may or may not actually occur. Such estimates and projections reflect various assumptions concerning anticipated results. While Meridian Capital Group believes these assumptions are reasonable, there can be no assurance that any of these estimates and projections will be correct. Therefore, actual results may vary materially from these estimates and projections. Any square footage dimensions set forth are approximate.

FLOOR PLAN



ENTRANCE ON MADISON AVENUE

JAMES FAMULARO
President

GARRETT KELLY
Director
212.468.5939
gkelly@meridiancapital.com

NOAM AZIZ
Associate
212.468.5984
naziz@meridiancapital.com



NEIGHBORS

JAMES FAMULARO
President

GARRETT KELLY
Director
212.468.5939
gkelly@meridiancapital.com

NOAM AZIZ
Associate
212.468.5984
naziz@meridiancapital.com



All information supplied is from sources deemed reliable and is furnished subject to errors, omissions, modifications, removal of the listing from sale or lease, and to any listing conditions, including the rates and manner of payment of commissions for particular offerings imposed by Meridian Capital Group. This information may include estimates and projections prepared by Meridian Capital Group with respect to future events, and these future events may or may not actually occur. Such estimates and projections reflect various assumptions concerning anticipated results. While Meridian Capital Group believes these assumptions are reasonable, there can be no assurance that any of these estimates and projections will be correct. Therefore, actual results may vary materially from these estimates and projections. Any square footage dimensions set forth are approximate.