

146

WEST 29TH STREET CHELSEA, NYC

Between Sixth & Seventh Avenues

RETAIL FOR LEASE



APPROXIMATE SIZE

Space A

Ground Floor: 1,800 SF
Basement: 3,200 SF

Space B

Ground Floor: 1,580 SF

ASKING RENT

~~Space A: \$13,000/Month~~ Reduced

Space A: \$12,000/Month

~~Space B: \$9,000/Month~~ Reduced

Space B: \$8,000/Month

TERM

5-10 Years

POSSESSION

Immediate

FRONTAGE

Space A: 20 FT

Space B: 20 FT

COMMENTS

Space A

- Will be delivered in white-box condition
- Can be vented
- Interior access to basement

Space B

- In white-box condition with marble flooring
- Can be vented
- 2 private bathrooms in place

NEIGHBORS

Le Pain Quotidien • Pioneers • Church Street Boxing
• Moxy Hotel • Five Guys • Oscar wilde • Equinox •
Patent Pending • Playa Bowls • Bodyrok • Crossfit

TRANSPORTATION

T R W

JAMES FAMULARO
President

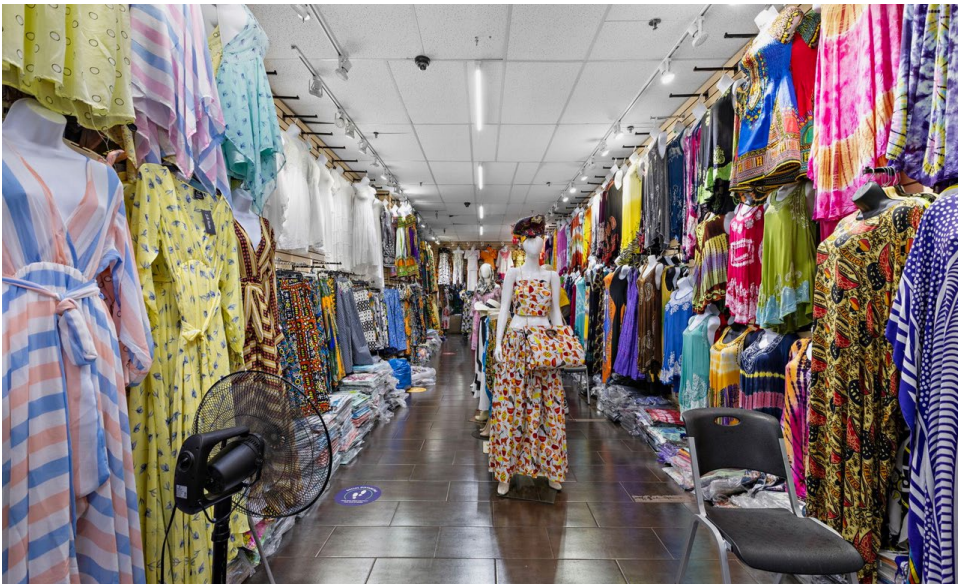
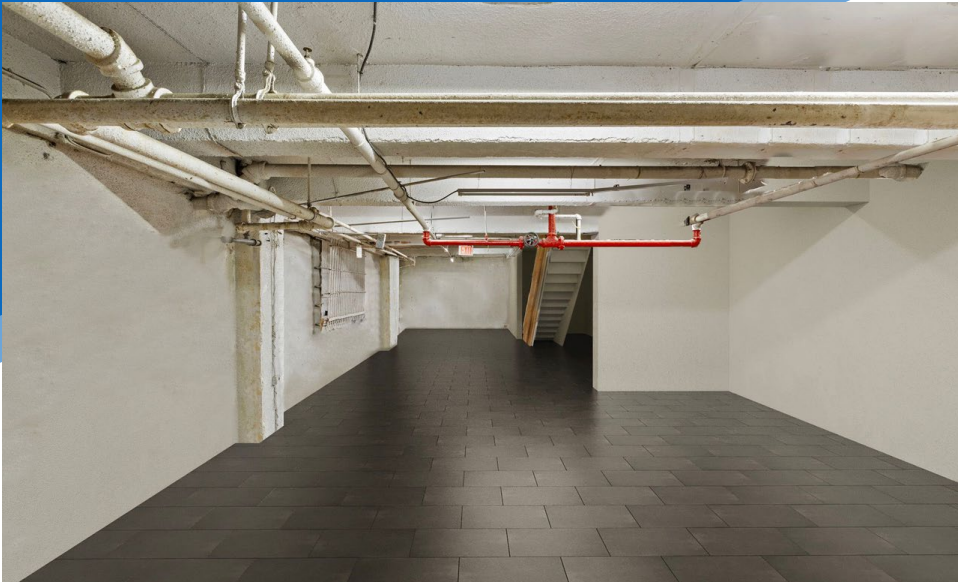
ALEC NAMDAR
Associate
212.468.5915
anamdar@meridiancapital.com

NOAM AZIZ
Associate
212.468.5984
naziz@meridiancapital.com

SARA LAMSTEIN
Associate
212.468.5945
slamstein@meridiancapital.com

MERIDIAN
RETAIL LEASING

All information supplied is from sources deemed reliable and is furnished subject to errors, omissions, modifications, removal of the listing from sale or lease, and to any listing conditions, including the rates and manner of payment of commissions for particular offerings imposed by Meridian Capital Group. This information may include estimates and projections prepared by Meridian Capital Group with respect to future events, and these future events may or may not actually occur. Such estimates and projections reflect various assumptions concerning anticipated results. While Meridian Capital Group believes these assumptions are reasonable, there can be no assurance that any of these estimates and projections will be correct. Therefore, actual results may vary materially from these estimates and projections. Any square footage dimensions set forth are approximate.



INTERIOR | SPACE A

JAMES FAMULARO
President

ALEC NAMDAR
Associate
212.468.5915
anamdar@meridiancapital.com

NOAM AZIZ
Associate
212.468.5984
naziz@meridiancapital.com

SARA LAMSTEIN
Associate
212.468.5945
slamstein@meridiancapital.com





INTERIOR | SPACE B

JAMES FAMULARO
President

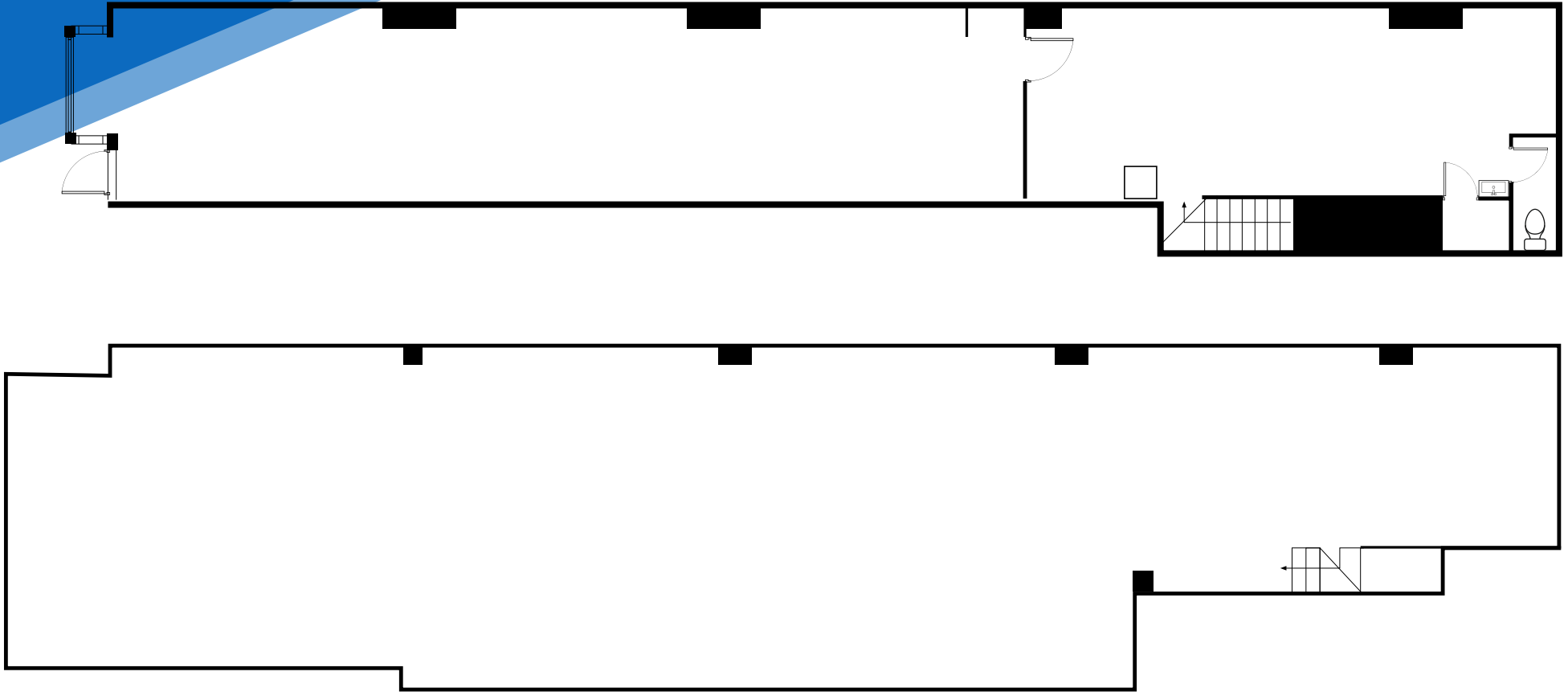
ALEC NAMDAR
Associate
212.468.5915
anamdar@meridiancapital.com

NOAM AZIZ
Associate
212.468.5984
naziz@meridiancapital.com

SARA LAMSTEIN
Associate
212.468.5945
slamstein@meridiancapital.com



FLOOR PLAN | SPACE A



JAMES FAMULARO
President

ALEC NAMDAR
Associate
212.468.5915
anamdar@meridiancapital.com

NOAM AZIZ
Associate
212.468.5984
naziz@meridiancapital.com

SARA LAMSTEIN
Associate
212.468.5945
slamstein@meridiancapital.com

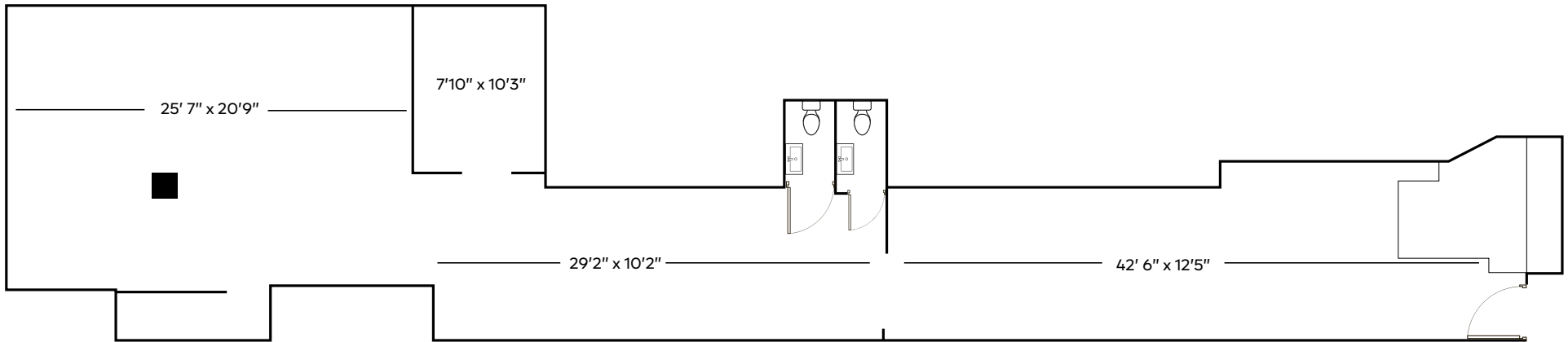


146 WEST 29TH STREET

CHELSEA, NYC | Between Sixth and Seventh Avenues

RETAIL FOR LEASE

FLOOR PLAN | SPACE B



JAMES FAMULARO
President

ALEC NAMDAR
Associate
212.468.5915
anamdar@meridiancapital.com

NOAM AZIZ
Associate
212.468.5984
naziz@meridiancapital.com

SARA LAMSTEIN
Associate
212.468.5945
slamstein@meridiancapital.com



All information supplied is from sources deemed reliable and is furnished subject to errors, omissions, modifications, removal of the listing from sale or lease, and to any listing conditions, including the rates and manner of payment of commissions for particular offerings imposed by Meridian Capital Group. This information may include estimates and projections prepared by Meridian Capital Group with respect to future events, and these future events may or may not actually occur. Such estimates and projections reflect various assumptions concerning anticipated results. While Meridian Capital Group believes these assumptions are reasonable, there can be no assurance that any of these estimates and projections will be correct. Therefore, actual results may vary materially from these estimates and projections. Any square footage dimensions set forth are approximate.



NEIGHBORS

JAMES FAMULARO
 President

ALEC NAMDAR
 Associate
 212.468.5915
 anamdard@meridiancapital.com

NOAM AZIZ
 Associate
 212.468.5984
 naziz@meridiancapital.com

SARA LAMSTEIN
 Associate
 212.468.5945
 slamstein@meridiancapital.com



All information supplied is from sources deemed reliable and is furnished subject to errors, omissions, modifications, removal of the listing from sale or lease, and to any listing conditions, including the rates and manner of payment of commissions for particular offerings imposed by Meridian Capital Group. This information may include estimates and projections prepared by Meridian Capital Group with respect to future events, and these future events may or may not actually occur. Such estimates and projections reflect various assumptions concerning anticipated results. While Meridian Capital Group believes these assumptions are reasonable, there can be no assurance that any of these estimates and projections will be correct. Therefore, actual results may vary materially from these estimates and projections. Any square footage dimensions set forth are approximate.