

12-22

ASTORIA BOULEVARD ASTORIA, QUEENS

Corner of Astoria Boulevard & 14th Street

RETAIL FOR LEASE

APPROXIMATE SIZE

Space A: 2,800 SF
Space B: 350 SF

ASKING RENT

Space A: \$12,000/Month
Space B: \$3,000/Month

POSSESSION

Immediate

TERM

10 Years

FRONTAGE

Space A: 70 FT
Space B: 10 FT

COMMENTS

- Pristine space located at the base of a new 5-story residential building
- Corner space in high residential area with heavy foot traffic
- High 20 FT ceilings
- Elevator access available in Space A
- Space A can be vented
- All uses considered

NEIGHBORS

American Bistro • Mary's Grocery • Vela Juice Bar • Medusa Art Studio • Benjamin Moore • Crossfit NYC • Astoria Provisions • Vesta Trattoria & Wine Bar

TRANSPORTATION

R W



JAMES FAMULARO
President

KEVIN BISCONTI
Director
212.468.5962
kbisconti@meridiancapital.com

CARSON SHAHRABANI
Associate
212.468.5927
cshahrabani@meridiancapital.com

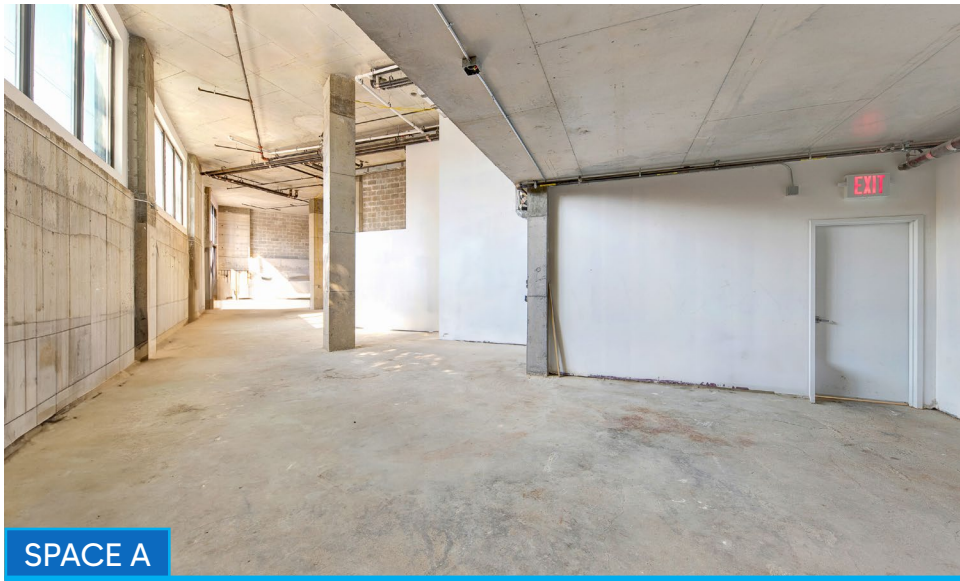


All information supplied is from sources deemed reliable and is furnished subject to errors, omissions, modifications, removal of the listing from sale or lease, and to any listing conditions, including the rates and manner of payment of commissions for particular offerings imposed by Meridian Capital Group. This information may include estimates and projections prepared by Meridian Capital Group with respect to future events, and these future events may or may not actually occur. Such estimates and projections reflect various assumptions concerning anticipated results. While Meridian Capital Group believes these assumptions are reasonable, there can be no assurance that any of these estimates and projections will be correct. Therefore, actual results may vary materially from these estimates and projections. Any square footage dimensions set forth are approximate.

12-22 ASTORIA BOULEVARD

ASTORIA, QUEENS | Corner of Astoria Boulevard and 14th Street

RETAIL FOR LEASE



INTERIOR

JAMES FAMULARO
President

KEVIN BISCONTI
Director
212.468.5962
kbisconti@meridiancapital.com

CARSON SHAHRABANI
Associate
212.468.5927
cshahrabani@meridiancapital.com

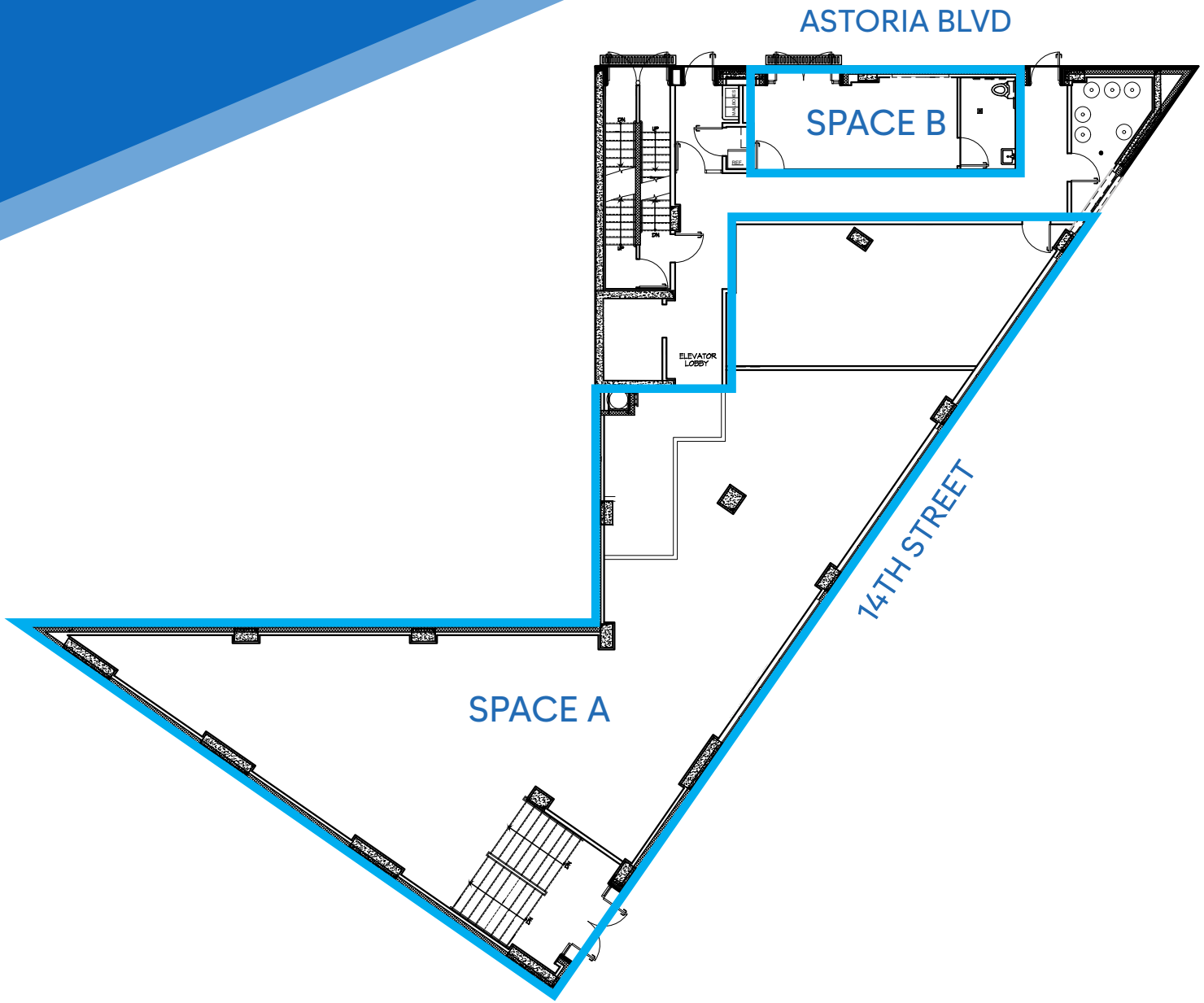


All information supplied is from sources deemed reliable and is furnished subject to errors, omissions, modifications, removal of the listing from sale or lease, and to any listing conditions, including the rates and manner of payment of commissions for particular offerings imposed by Meridian Capital Group. This information may include estimates and projections prepared by Meridian Capital Group with respect to future events, and these future events may or may not actually occur. Such estimates and projections reflect various assumptions concerning anticipated results. While Meridian Capital Group believes these assumptions are reasonable, there can be no assurance that any of these estimates and projections will be correct. Therefore, actual results may vary materially from these estimates and projections. Any square footage dimensions set forth are approximate.

12-22 ASTORIA BOULEVARD

ASTORIA, QUEENS | Corner of Astoria Boulevard and 14th Street

RETAIL FOR LEASE



FLOOR PLANS

JAMES FAMULARO
President

KEVIN BISCONTI
Director
212.468.5962
kbisconti@meridiancapital.com

CARSON SHAHRABANI
Associate
212.468.5927
cshahrabani@meridiancapital.com



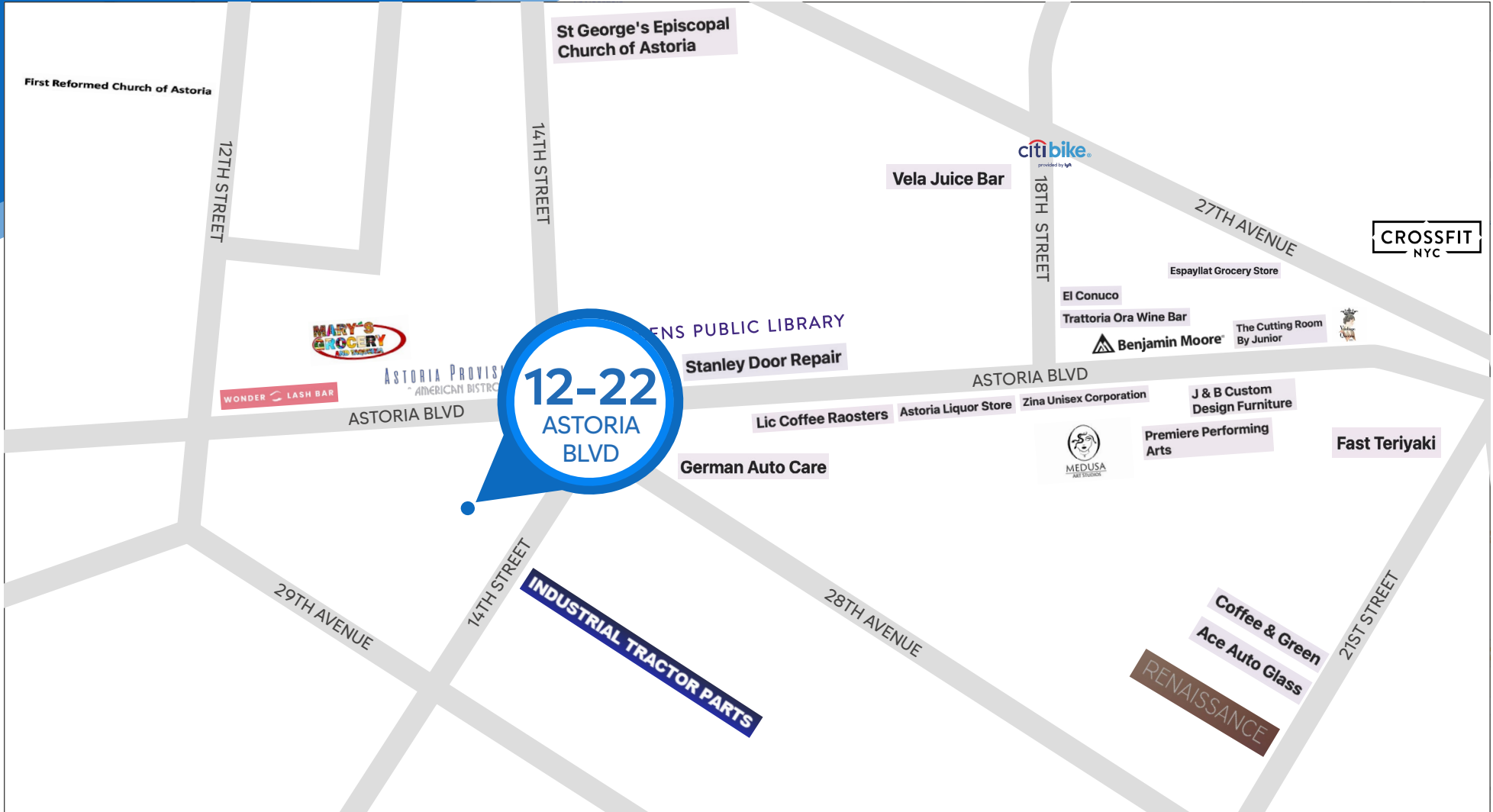
All information supplied is from sources deemed reliable and is furnished subject to errors, omissions, modifications, removal of the listing from sale or lease, and to any listing conditions, including the rates and manner of payment of commissions for particular offerings imposed by Meridian Capital Group. This information may include estimates and projections prepared by Meridian Capital Group with respect to future events, and these future events may or may not actually occur. Such estimates and projections reflect various assumptions concerning anticipated results. While Meridian Capital Group believes these assumptions are reasonable, there can be no assurance that any of these estimates and projections will be correct. Therefore, actual results may vary materially from these estimates and projections. Any square footage dimensions set forth are approximate.

12-22 ASTORIA BOULEVARD

ASTORIA, QUEENS | Corner of Astoria Boulevard and 14th Street

RETAIL FOR LEASE

NEIGHBORS



12-22
ASTORIA
BLVD

JAMES FAMULARO
President

KEVIN BISCONTI
Director
212.468.5962
kbisconti@meridiancapital.com

CARSON SHAHRABANI
Associate
212.468.5927
cshahrabani@meridiancapital.com



All information supplied is from sources deemed reliable and is furnished subject to errors, omissions, modifications, removal of the listing from sale or lease, and to any listing conditions, including the rates and manner of payment of commissions for particular offerings imposed by Meridian Capital Group. This information may include estimates and projections prepared by Meridian Capital Group with respect to future events, and these future events may or may not actually occur. Such estimates and projections reflect various assumptions concerning anticipated results. While Meridian Capital Group believes these assumptions are reasonable, there can be no assurance that any of these estimates and projections will be correct. Therefore, actual results may vary materially from these estimates and projections. Any square footage dimensions set forth are approximate.