

102

EAST 7TH STREET EAST VILLAGE, NYC

Between First Avenue & Avenue A



PROPERTY INFORMATION

APPROXIMATE SIZE

Ground Floor: 700 SF + Basement

ASKING RENT

\$7,495/Month

POSSESSION

Immediate

TERM

10 Years

FRONTAGE

10 FT

COMMENTS

- Boutique retail space
- Prime location in the heart of East Village
- 7-days-a-week foot traffic
- Outdoor space

NEIGHBORS

Atelier Sucre • Trash and Vaudeville • St. Stanislaus B & M Church • Jell and Chill • J & Y NYC Cleaners • Xela Trading Variety Store • 7th Street Burger • Saifee Hardware & Garden

TRANSPORTATION

4 6 N Q R W

JAMES FAMULARO
President

BEN BIBERAJ
Senior Director
703.434.1461
bbiberaj@meridiancapital.com

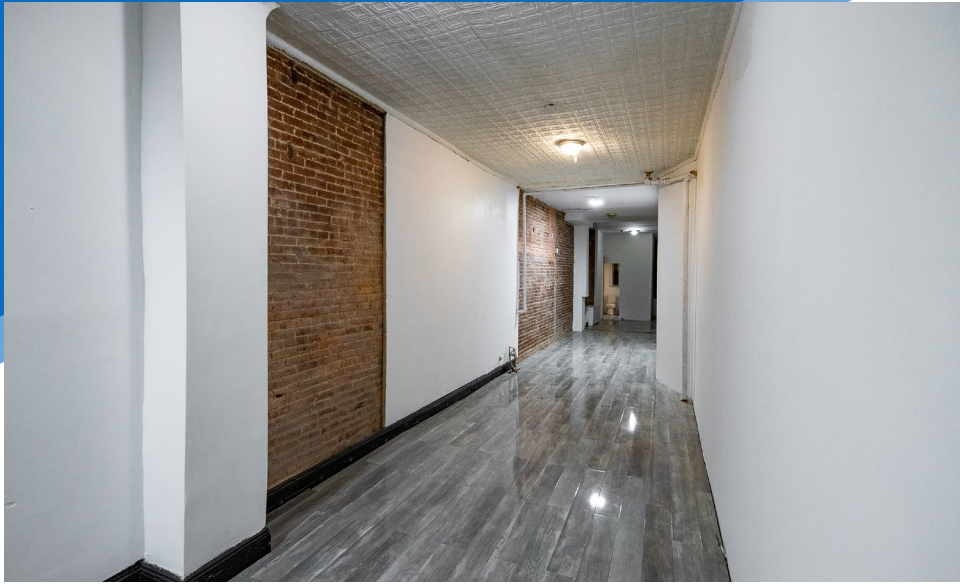
CAMERON PARSON
Associate
212.468.5954
cparson@meridiancapital.com



102 EAST 7TH STREET

EAST VILLAGE, NYC | Between First Avenue and Avenue A

RETAIL FOR LEASE



INTERIOR

JAMES FAMULARO
President

BEN BIBERAJ
Senior Director
703.434.1461
bbiberaj@meridiancapital.com

CAMERON PARSON
Associate
212.468.5954
cparson@meridiancapital.com



All information supplied is from sources deemed reliable and is furnished subject to errors, omissions, modifications, removal of the listing from sale or lease, and to any listing conditions, including the rates and manner of payment of commissions for particular offerings imposed by Meridian Capital Group. This information may include estimates and projections prepared by Meridian Capital Group with respect to future events, and these future events may or may not actually occur. Such estimates and projections reflect various assumptions concerning anticipated results. While Meridian Capital Group believes these assumptions are reasonable, there can be no assurance that any of these estimates and projections will be correct. Therefore, actual results may vary materially from these estimates and projections. Any square footage dimensions set forth are approximate.

102 EAST 7TH STREET

EAST VILLAGE, NYC | Between First Avenue and Avenue A

RETAIL FOR LEASE

NEIGHBORS



JAMES FAMULARO
President

BEN BIBERAJ
Senior Director
703.434.1461
bbiberaj@meridiancapital.com

CAMERON PARSON
Associate
212.468.5954
cparson@meridiancapital.com



All information supplied is from sources deemed reliable and is furnished subject to errors, omissions, modifications, removal of the listing from sale or lease, and to any listing conditions, including the rates and manner of payment of commissions for particular offerings imposed by Meridian Capital Group. This information may include estimates and projections prepared by Meridian Capital Group with respect to future events, and these future events may or may not actually occur. Such estimates and projections reflect various assumptions concerning anticipated results. While Meridian Capital Group believes these assumptions are reasonable, there can be no assurance that any of these estimates and projections will be correct. Therefore, actual results may vary materially from these estimates and projections. Any square footage dimensions set forth are approximate.