

344

WEST 57TH STREET
COLUMBUS CIRCLE, NYC

Between Eighth & Ninth Avenues

RETAIL FOR LEASE



PROPERTY INFORMATION

APPROXIMATE SIZE

925 SF

ASKING RENT

Upon Request

POSSESSION

Immediate

TERM

10+ Years

FRONTAGE

10 FT

COMMENTS

- White-box space
- At the base of a 550-unit luxury apartment building
- Steps from Central Park and Columbus Circle
- All uses considered

NEIGHBORS

- Williams Sonoma • Bareburger • Baked by Melissa
- MAC Cosmetics • Stuart Weitzman • Wolford • Whole Foods • Bad Roman • Equinox • Bad Roman
- Juice Press • Magnolia Bakery • Whole Foods

TRANSPORTATION



JAMES FAMULARO

President

BEN BIBERAJ

Senior Director

703.434.1461

bbiberaj@meridiancapital.com

CAMERON PARSON

Associate

212.468.5954

cparson@meridiancapital.com

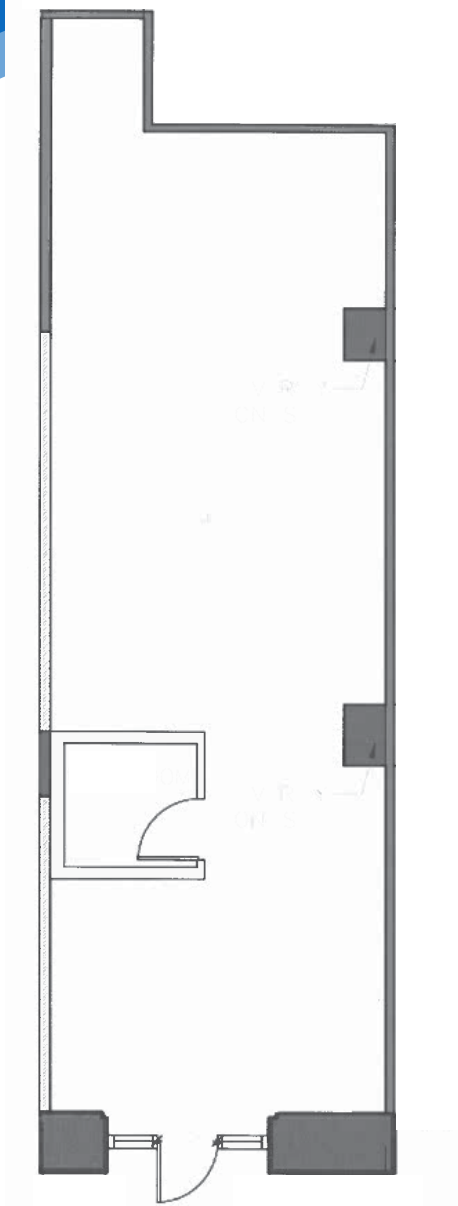


All information supplied is from sources deemed reliable and is furnished subject to errors, omissions, modifications, removal of the listing from sale or lease, and to any listing conditions, including the rates and manner of payment of commissions for particular offerings imposed by Meridian Capital Group. This information may include estimates and projections prepared by Meridian Capital Group with respect to future events, and these future events may or may not actually occur. Such estimates and projections reflect various assumptions concerning anticipated results. While Meridian Capital Group believes these assumptions are reasonable, there can be no assurance that any of these estimates and projections will be correct. Therefore, actual results may vary materially from these estimates and projections. Any square footage dimensions set forth are approximate.

344 WEST 57TH STREET
COLUMBUS CIRCLE, NYC | Between Eighth and Ninth Avenues

RETAIL FOR LEASE

FLOOR PLAN



ENTRANCE ON WEST 57TH STREET

JAMES FAMULARO
President

BEN BIBERAJ
Senior Director
703.434.1461
bbiberaj@meridiancapital.com

CAMERON PARSON
Associate
212.468.5954
cparson@meridiancapital.com



All information supplied is from sources deemed reliable and is furnished subject to errors, omissions, modifications, removal of the listing from sale or lease, and to any listing conditions, including the rates and manner of payment of commissions for particular offerings imposed by Meridian Capital Group. This information may include estimates and projections prepared by Meridian Capital Group with respect to future events, and these future events may or may not actually occur. Such estimates and projections reflect various assumptions concerning anticipated results. While Meridian Capital Group believes these assumptions are reasonable, there can be no assurance that any of these estimates and projections will be correct. Therefore, actual results may vary materially from these estimates and projections. Any square footage dimensions set forth are approximate.

344 WEST 57TH STREET
 COLUMBUS CIRCLE, NYC | Between Eighth and Ninth Avenues

RETAIL FOR LEASE

NEIGHBORS

The map displays a grid of streets including W 60th, W 59th, W 58th, W 57th, and W 56th Streets, and Columbus Avenue, Ninth Avenue, and Eighth Avenue. A central callout bubble highlights '344 WEST 57TH STREET'. Landmarks include Fordham University, Central Park, and the Trump International Hotel & Tower. Retailers shown include H&M, Diptyque, Equinox, Bad Roman, Hugo Boss, Michael Kors, J.Crew, Aveda, Swarovski, Per Se, Wolford, North Bar, Coach, Williams Sonoma, and many others. A large blue callout bubble is centered on 344 West 57th Street.

JAMES FAMULARO
 President

BEN BIBERAJ
 Senior Director
 703.434.1461
 bbiberaj@meridiancapital.com

CAMERON PARSON
 Associate
 212.468.5954
 cparson@meridiancapital.com



All information supplied is from sources deemed reliable and is furnished subject to errors, omissions, modifications, removal of the listing from sale or lease, and to any listing conditions, including the rates and manner of payment of commissions for particular offerings imposed by Meridian Capital Group. This information may include estimates and projections prepared by Meridian Capital Group with respect to future events, and these future events may or may not actually occur. Such estimates and projections reflect various assumptions concerning anticipated results. While Meridian Capital Group believes these assumptions are reasonable, there can be no assurance that any of these estimates and projections will be correct. Therefore, actual results may vary materially from these estimates and projections. Any square footage dimensions set forth are approximate.