

212

EAST 125TH STREET

COMMON AT THE RESERVE

EAST HARLEM, NYC



MERIDIAN
RETAIL LEASING

212

EAST 125TH STREET EAST HARLEM, NYC

Between Second & Third Avenues

RETAIL/RESTAURANT FOR LEASE

APPROXIMATE SIZE

Ground Floor: 2,700 SF
Outdoor Rear Courtyard: 1,000 SF
Cellar: 800 SF

ASKING RENT

~~\$75 PSF~~ Reduced
\$65 PSF

POSSESSION

Immediate

TERM

5-10 Years

FRONTAGE

60 FT

COMMENTS

- Retail at the base of "Common at the Reserve", a luxury apartment building with 113-units
- Large windows providing natural light with a unique rear courtyard
- Can be vented
- Flexible divisions possible from 700+ SF
- In the heart of the bustling 125th Street retail corridor filled with national tenants and influx of new development underway

NEIGHBORS

Burger King • Metro by T-Mobile • New Dragon
• Dunkin' • Taco Bell • Foot Locker • BP Gas
Station • Kennedy Fried Chicken • Food Bazaar

TRANSPORTATION

6

JAMES FAMULARO
President

DANE HARLOWE
Director
212.468.5966
dharlowe@meridiancapital.com

ALEC NAMDAR
Associate
212.468.5915
anamdar@meridiancapital.com

NOAM AZIZ
Associate
212.468.5984
naziz@meridiancapital.com

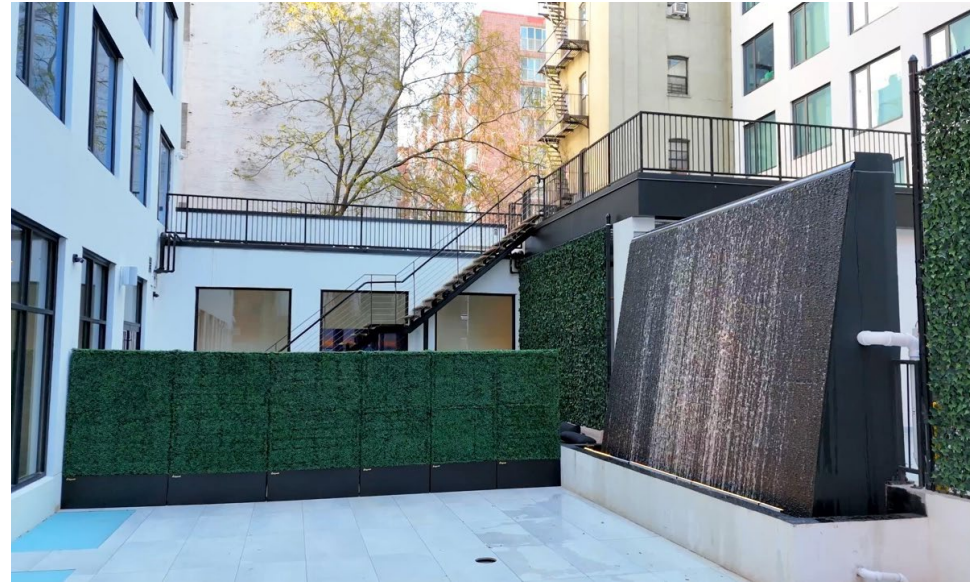


PROPERTY INFORMATION

212 EAST 125TH STREET

EAST HARLEM, NYC | Between Second and Third Avenues

RETAIL/RESTAURANT FOR LEASE



INTERIOR

JAMES FAMULARO
President

DANE HARLOWE
Director
212.468.5966
dharlowe@meridiancapital.com

ALEC NAMDAR
Associate
212.468.5915
anamdar@meridiancapital.com

NOAM AZIZ
Associate
212.468.5984
naziz@meridiancapital.com



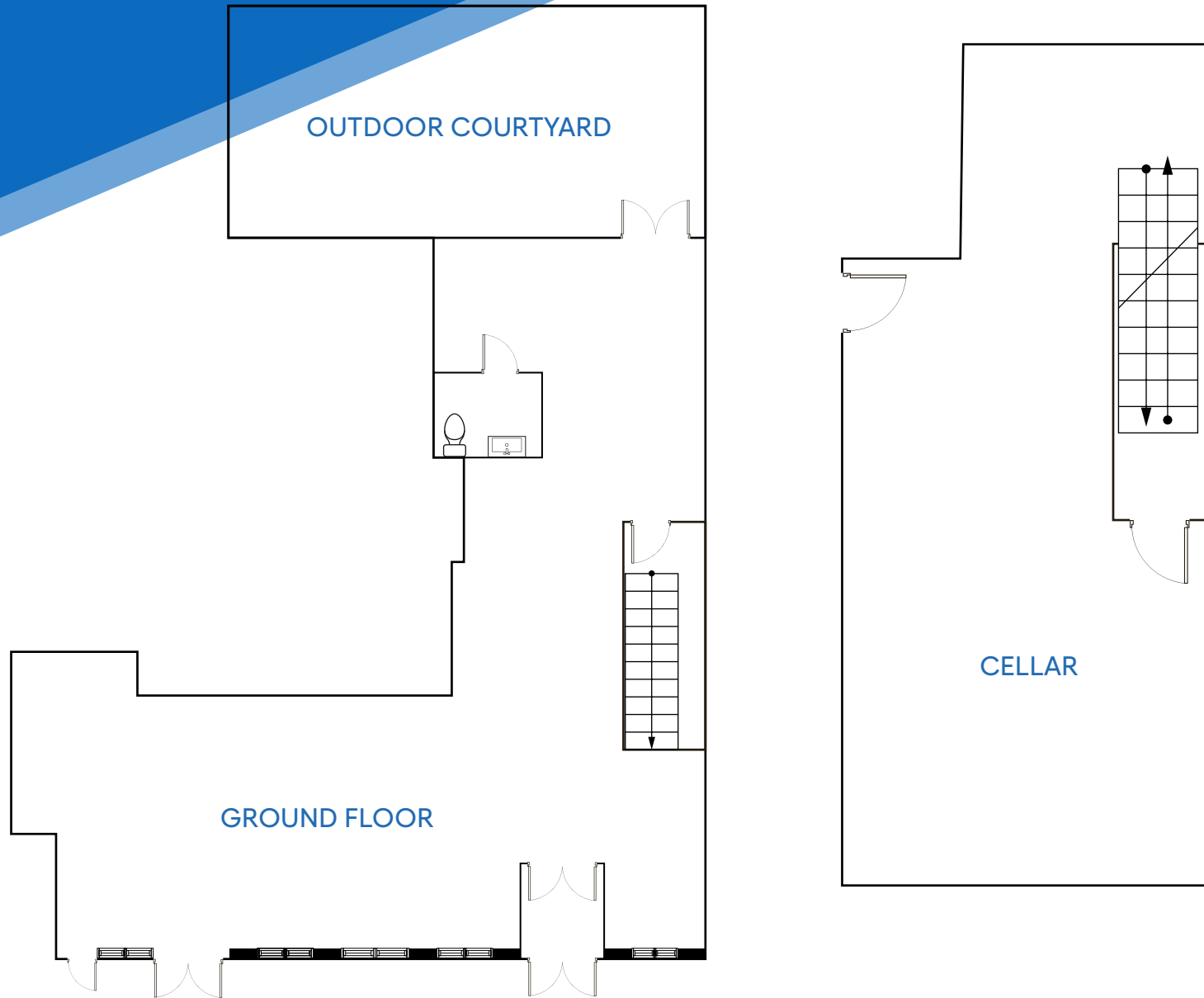
All information supplied is from sources deemed reliable and is furnished subject to errors, omissions, modifications, removal of the listing from sale or lease, and to any listing conditions, including the rates and manner of payment of commissions for particular offerings imposed by Meridian Capital Group. This information may include estimates and projections prepared by Meridian Capital Group with respect to future events, and these future events may or may not actually occur. Such estimates and projections reflect various assumptions concerning anticipated results. While Meridian Capital Group believes these assumptions are reasonable, there can be no assurance that any of these estimates and projections will be correct. Therefore, actual results may vary materially from these estimates and projections. Any square footage dimensions set forth are approximate.

212 EAST 125TH STREET

EAST HARLEM, NYC | Between Second and Third Avenues

RETAIL/RESTAURANT FOR LEASE

FLOOR PLAN



JAMES FAMULARO
President

DANE HARLOWE
Director

212.468.5966
dharlowe@meridiancapital.com

ALEC NAMDAR
Associate

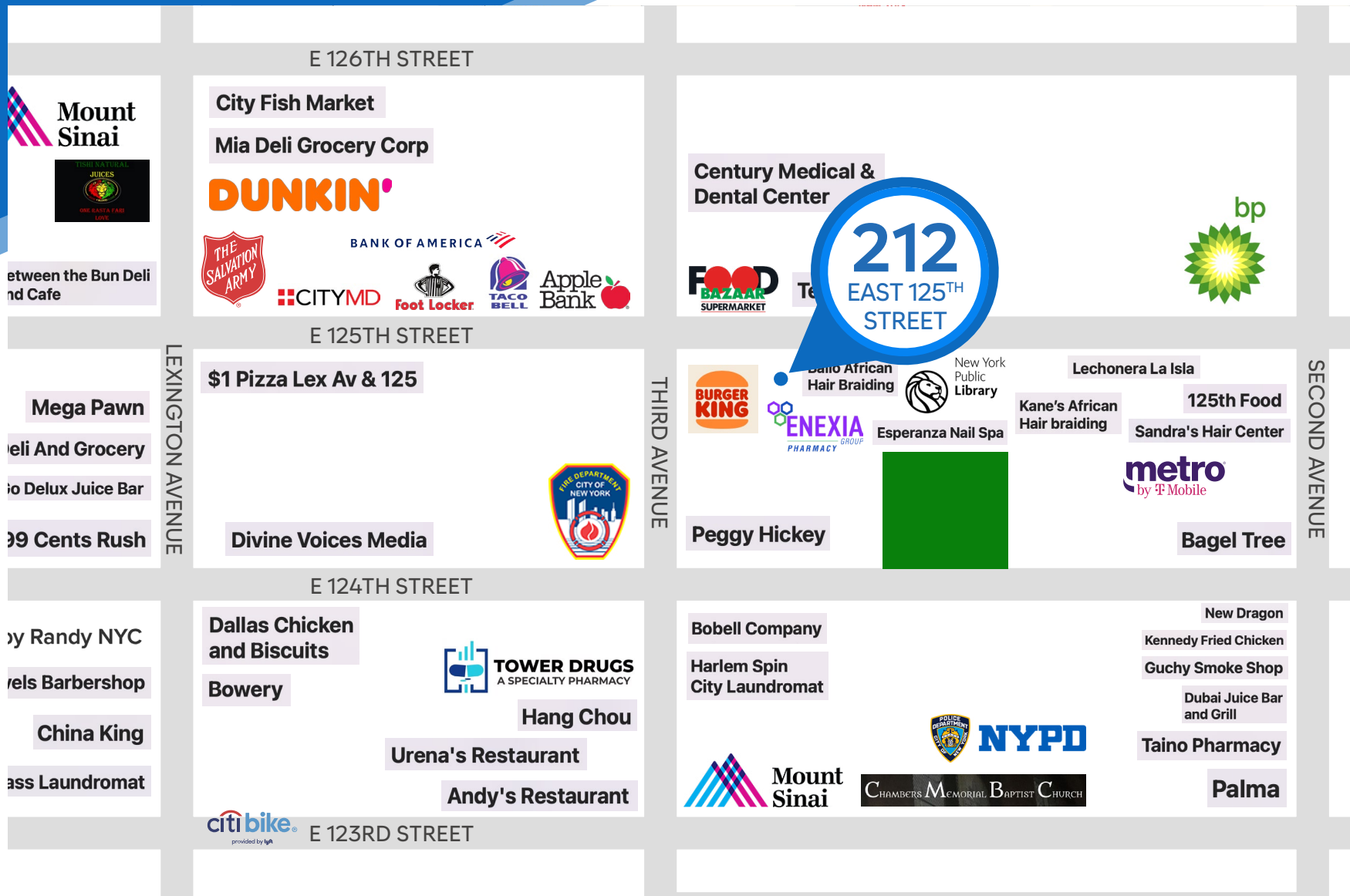
212.468.5915
anamdar@meridiancapital.com

NOAM AZIZ
Associate

212.468.5984
naziz@meridiancapital.com



All information supplied is from sources deemed reliable and is furnished subject to errors, omissions, modifications, removal of the listing from sale or lease, and to any listing conditions, including the rates and manner of payment of commissions for particular offerings imposed by Meridian Capital Group. This information may include estimates and projections prepared by Meridian Capital Group with respect to future events, and these future events may or may not actually occur. Such estimates and projections reflect various assumptions concerning anticipated results. While Meridian Capital Group believes these assumptions are reasonable, there can be no assurance that any of these estimates and projections will be correct. Therefore, actual results may vary materially from these estimates and projections. Any square footage dimensions set forth are approximate.



NEIGHBORS

JAMES FAMULARO
 President

DANE HARLOWE
 Director
 212.468.5966
 dharlowe@meridiancapital.com

ALEC NAMDAR
 Associate
 212.468.5915
 anamdar@meridiancapital.com

NOAM AZIZ
 Associate
 212.468.5984
 naziz@meridiancapital.com

