

# 122

## CHRISTOPHER STREET WEST VILLAGE, NYC

Between Bleecker & Hudson Streets

RESTAURANT/RETAIL FOR LEASE

### APPROXIMATE SIZE

700 SF + Basement

### ASKING RENT

~~\$12,495/Month~~ Reduced  
\$11,495/Month

### POSSESSION

Immediate

### TERM

Negotiable

### FRONTAGE

15 FT

### COMMENTS

- Space is vented
- Previously a nail salon
- Prime West Village corridor with 24/7 foot traffic
- All uses considered

### NEIGHBORS

Employee's Only • L'Artusi • Fairfax • Angel's Share •  
I Sodi • Village Square Pizza • McNulty's • Bayards •  
Due West • Fiaschetta • Saint Theo's • Anine Bing

### TRANSPORTATION

1 A C E B D F M

## RESTAURANT / RETAIL SPACE FOR LEASE

Ben Biberaj  
**703.434.1461**  
BB@meridiancapital.com

 **MERIDIAN**  
RETAIL LEASING



PROPERTY INFORMATION

**JAMES FAMULARO**  
President

**BEN BIBERAJ**  
Senior Director  
703.434.1461  
bbiberaj@meridiancapital.com

**SAM TUCKER**  
Associate  
212.468.5952  
stucker@meridiancapital.com

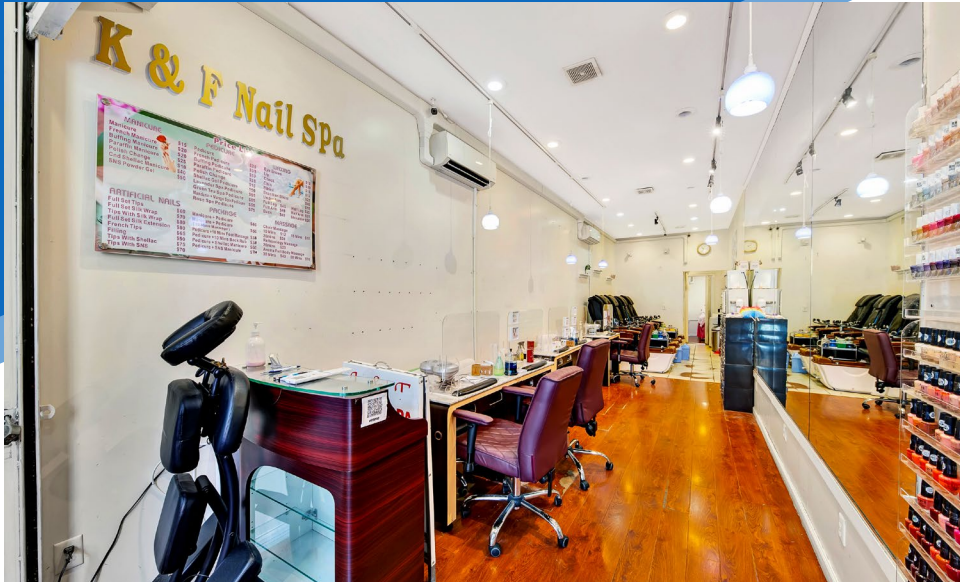
 **MERIDIAN**  
RETAIL LEASING

All information supplied is from sources deemed reliable and is furnished subject to errors, omissions, modifications, removal of the listing from sale or lease, and to any listing conditions, including the rates and manner of payment of commissions for particular offerings imposed by Meridian Capital Group. This information may include estimates and projections prepared by Meridian Capital Group with respect to future events, and these future events may or may not actually occur. Such estimates and projections reflect various assumptions concerning anticipated results. While Meridian Capital Group believes these assumptions are reasonable, there can be no assurance that any of these estimates and projections will be correct. Therefore, actual results may vary materially from these estimates and projections. Any square footage dimensions set forth are approximate.

# 122 CHRISTOPHER STREET

WEST VILLAGE, NYC | Between Bleecker and Hudson Streets

RESTAURANT/RETAIL FOR LEASE



INTERIOR

**JAMES FAMULARO**  
President

**BEN BIBERAJ**  
Senior Director  
703.434.1461  
bbiberaj@meridiancapital.com

**SAM TUCKER**  
Associate  
212.468.5952  
stucker@meridiancapital.com



All information supplied is from sources deemed reliable and is furnished subject to errors, omissions, modifications, removal of the listing from sale or lease, and to any listing conditions, including the rates and manner of payment of commissions for particular offerings imposed by Meridian Capital Group. This information may include estimates and projections prepared by Meridian Capital Group with respect to future events, and these future events may or may not actually occur. Such estimates and projections reflect various assumptions concerning anticipated results. While Meridian Capital Group believes these assumptions are reasonable, there can be no assurance that any of these estimates and projections will be correct. Therefore, actual results may vary materially from these estimates and projections. Any square footage dimensions set forth are approximate.

# 122 CHRISTOPHER STREET

WEST VILLAGE, NYC | Between Bleecker and Hudson Streets

RESTAURANT/RETAIL FOR LEASE

NEIGHBORS

The map displays a grid of streets including Hudson Street, Bedford Street, Grove Street, W Tenth Street, and Christopher Street. A blue callout bubble is centered on 122 Christopher Street. Surrounding businesses include:

- Top Left:** BAYARD'S, RED FARM, UNITED STATES POSTAL SERVICE, BIRD DOG, SOUTHERN CHARM, ATTENAN.
- Top Center:** RITE AID, NYPD, Westgate Cleaners, Hudson & Charles, VIA PORTA, b'artusi, CLINIQUE YFT, SARAH PACINI, wylde blue, Vidov West.
- Top Right:** SE I BILLY REID, Rains, OLFACTORY NYC, isalis, FAHERTY, DUE WEST, FAIRFAX TAVERN AND BAR, The Little Taco Ho.
- Middle Left:** W/S WILLSPACE, SMASHED, GREENWICH VILLAGE ANIMAL HOSPITAL, RIVOLI PIZZA II, THE WARREN, iti bike, S SCHOOL LEADING WITH HEART.
- Middle Center:** JUSTINE'S, WEST10WEST, L'ARTUSI, BIG NIGHT, SAINT THEO'S, MADMAN ESPRESSO, BOISSON ANINE BING, SUSHI CO, JULY'S COFFEE CO., INC.
- Middle Right:** ASTR THE LABEL, Aēsop, JULIETTA GELATO - CAFE, Do Not Feed Alligators, MAT CHA FUL, BANK OF AMERICA, Santander, FELIX NYC, CELLAR DOG, BUCK MASON, DUNKIN'.
- Bottom Left:** Fresh 2 Go, Sanpanino SANDWICH SHOP, PS3 CHARRETTE SCHOOL The Art of Education.
- Bottom Center:** FIASCHETTERIA, Ty's, Lindustrie, TALEA BEER CO, THE COFFEE BREAKERS, Bedford Gardens Restaurant, Marine Layer, EMMETT'S ON GROVE, Angel's Share.
- Bottom Right:** MAMA'S TOO!, milk, HUDSON BAGELS, GROVE STREET SOC, Marie's Crisis Cafe, Andy's Del, HUNGRY GHOST COFFEE, Piellino BAR, BARRHOUSE NYC.

**JAMES FAMULARO**  
President

**BEN BIBERAJ**  
Senior Director  
703.434.1461  
bbiberaj@meridiancapital.com

**SAM TUCKER**  
Associate  
212.468.5952  
stucker@meridiancapital.com



All information supplied is from sources deemed reliable and is furnished subject to errors, omissions, modifications, removal of the listing from sale or lease, and to any listing conditions, including the rates and manner of payment of commissions for particular offerings imposed by Meridian Capital Group. This information may include estimates and projections prepared by Meridian Capital Group with respect to future events, and these future events may or may not actually occur. Such estimates and projections reflect various assumptions concerning anticipated results. While Meridian Capital Group believes these assumptions are reasonable, there can be no assurance that any of these estimates and projections will be correct. Therefore, actual results may vary materially from these estimates and projections. Any square footage dimensions set forth are approximate.