

346

WEST 57TH STREET
COLUMBUS CIRCLE, NYC

Between Eighth & Ninth Avenues



PROPERTY INFORMATION

APPROXIMATE SIZE

1,750 SF

ASKING RENT

\$18,750/Month

POSSESSION

Immediate

TERM

10 Years

FRONTAGE

20 FT

COMMENTS

- Newly white-boxed
- Move-in ready
- Steps from Central Park and Columbus Circle

NEIGHBORS

Williams Sonoma • Bareburger • Baked by Melissa • MAC Cosmetics • Stuart Weitzman • Wolford • Whole Foods • Bad Roman • Equinox

TRANSPORTATION

1 A C B D

JAMES FAMULARO

President

BEN BIBERAJ

Senior Director

703.434.1461

bbiberaj@meridiancapital.com

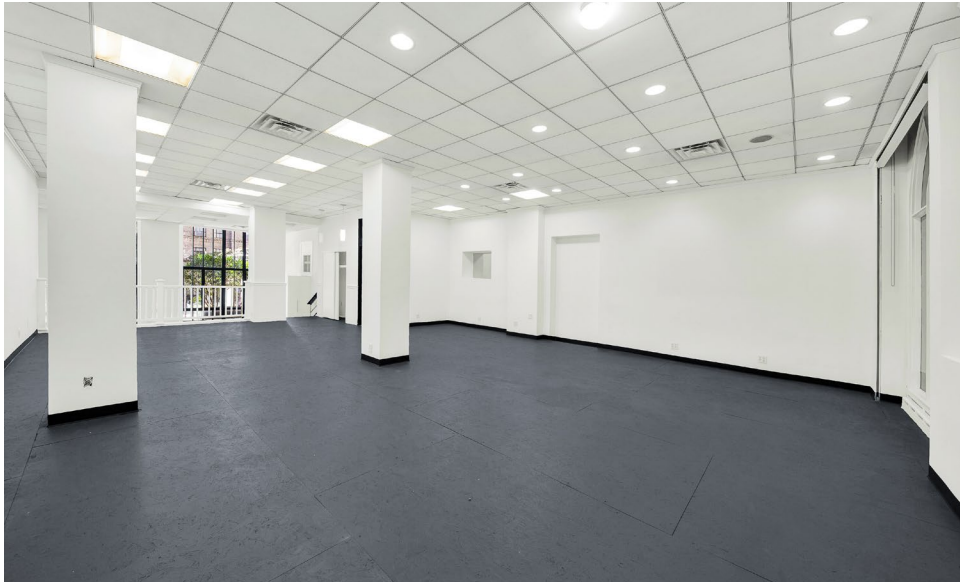
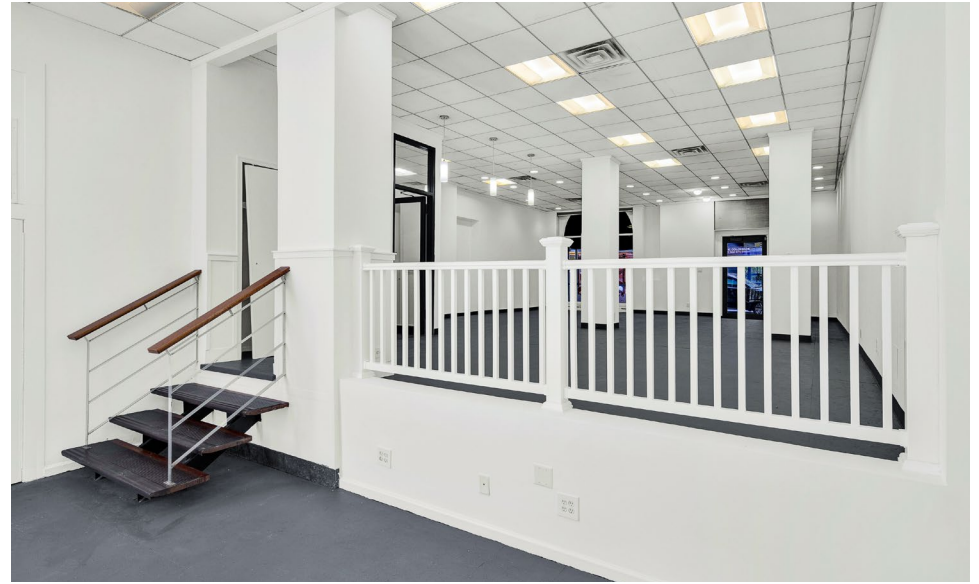
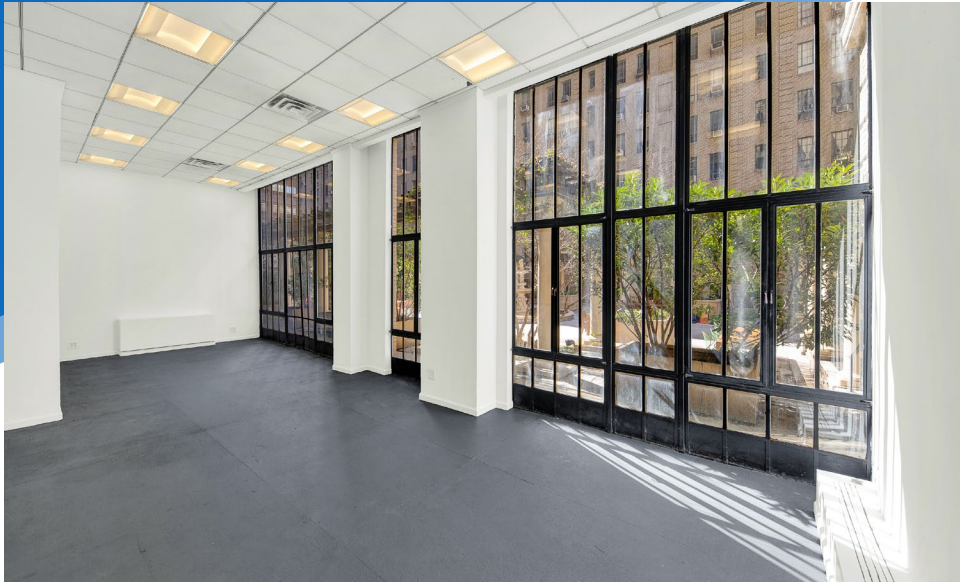
CAMERON PARSON

Associate

212.468.5954

cparson@meridiancapital.com





INTERIOR

JAMES FAMULARO
President

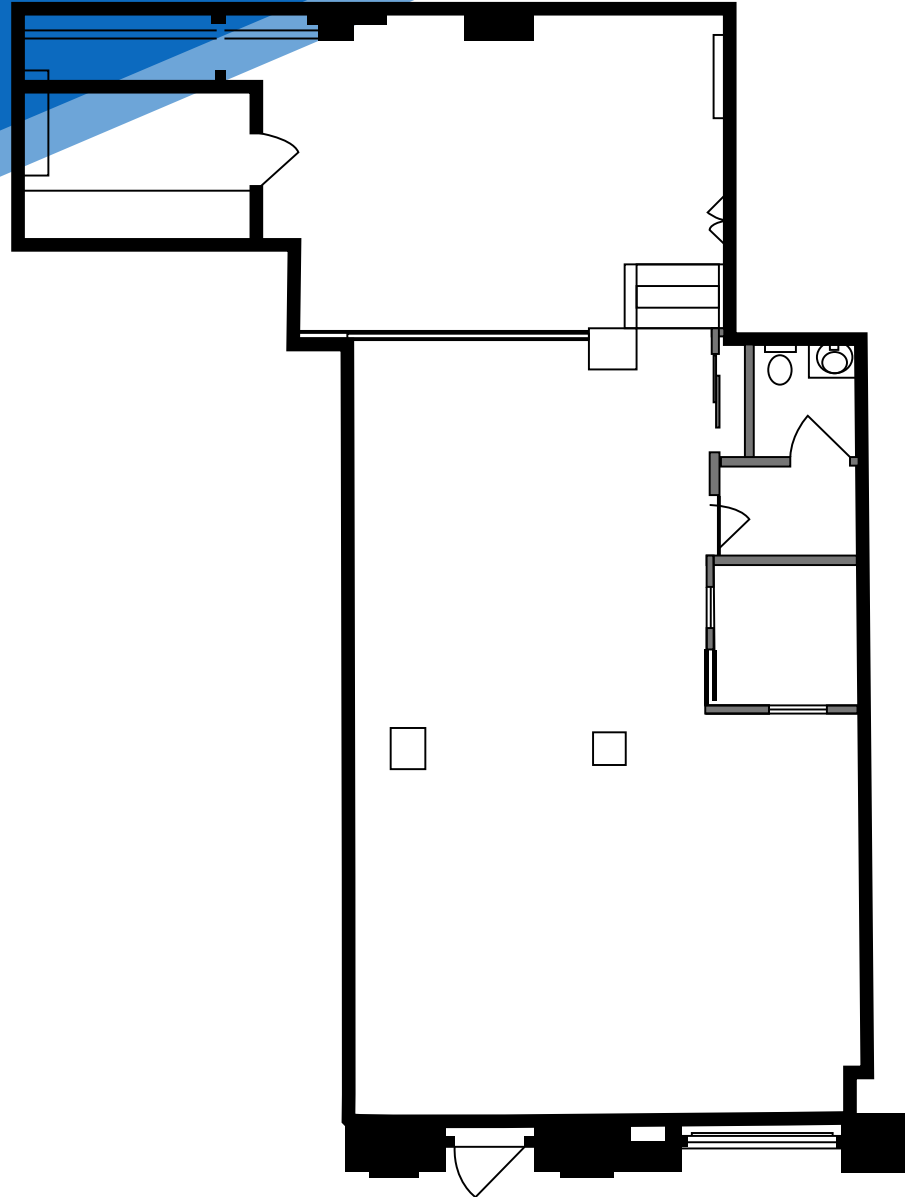
BEN BIBERAJ
Senior Director
703.434.1461
bbiberaj@meridiancapital.com

CAMERON PARSON
Associate
212.468.5954
cparson@meridiancapital.com



346 WEST 57TH STREET
COLUMBUS CIRCLE, NYC | Between Eighth and Ninth Avenues

RETAIL FOR LEASE



WEST 57TH STREET

FLOOR PLAN

JAMES FAMULARO
President

BEN BIBERAJ
Senior Director
703.434.1461
bbiberaj@meridiancapital.com

CAMERON PARSON
Associate
212.468.5954
cparson@meridiancapital.com



All information supplied is from sources deemed reliable and is furnished subject to errors, omissions, modifications, removal of the listing from sale or lease, and to any listing conditions, including the rates and manner of payment of commissions for particular offerings imposed by Meridian Capital Group. This information may include estimates and projections prepared by Meridian Capital Group with respect to future events, and these future events may or may not actually occur. Such estimates and projections reflect various assumptions concerning anticipated results. While Meridian Capital Group believes these assumptions are reasonable, there can be no assurance that any of these estimates and projections will be correct. Therefore, actual results may vary materially from these estimates and projections. Any square footage dimensions set forth are approximate.

346 WEST 57TH STREET
 COLUMBUS CIRCLE, NYC | Between Eighth and Ninth Avenues

RETAIL FOR LEASE

NEIGHBORS

The map displays a grid of streets including W 60th, W 59th, W 58th, W 57th, and W 56th Streets, and Columbus Avenue, Ninth Avenue, and Eighth Avenue. A central callout bubble highlights the address 346 West 57th Street. Landmarks include Fordham University, Central Park, and the New York Institute of Technology. Retailers shown include H&M, Diptyque, Equinox, Bad Roman, Hugo Boss, Michael Kors, J.Crew, Aveda, Swarovski, CVS Pharmacy, and many others.

JAMES FAMULARO
 President

BEN BIBERAJ
 Senior Director
 703.434.1461
 bbiberaj@meridiancapital.com

CAMERON PARSON
 Associate
 212.468.5954
 cparson@meridiancapital.com



All information supplied is from sources deemed reliable and is furnished subject to errors, omissions, modifications, removal of the listing from sale or lease, and to any listing conditions, including the rates and manner of payment of commissions for particular offerings imposed by Meridian Capital Group. This information may include estimates and projections prepared by Meridian Capital Group with respect to future events, and these future events may or may not actually occur. Such estimates and projections reflect various assumptions concerning anticipated results. While Meridian Capital Group believes these assumptions are reasonable, there can be no assurance that any of these estimates and projections will be correct. Therefore, actual results may vary materially from these estimates and projections. Any square footage dimensions set forth are approximate.